

STATE OF ILLINOIS  
DEPARTMENT OF TRANSPORTATION

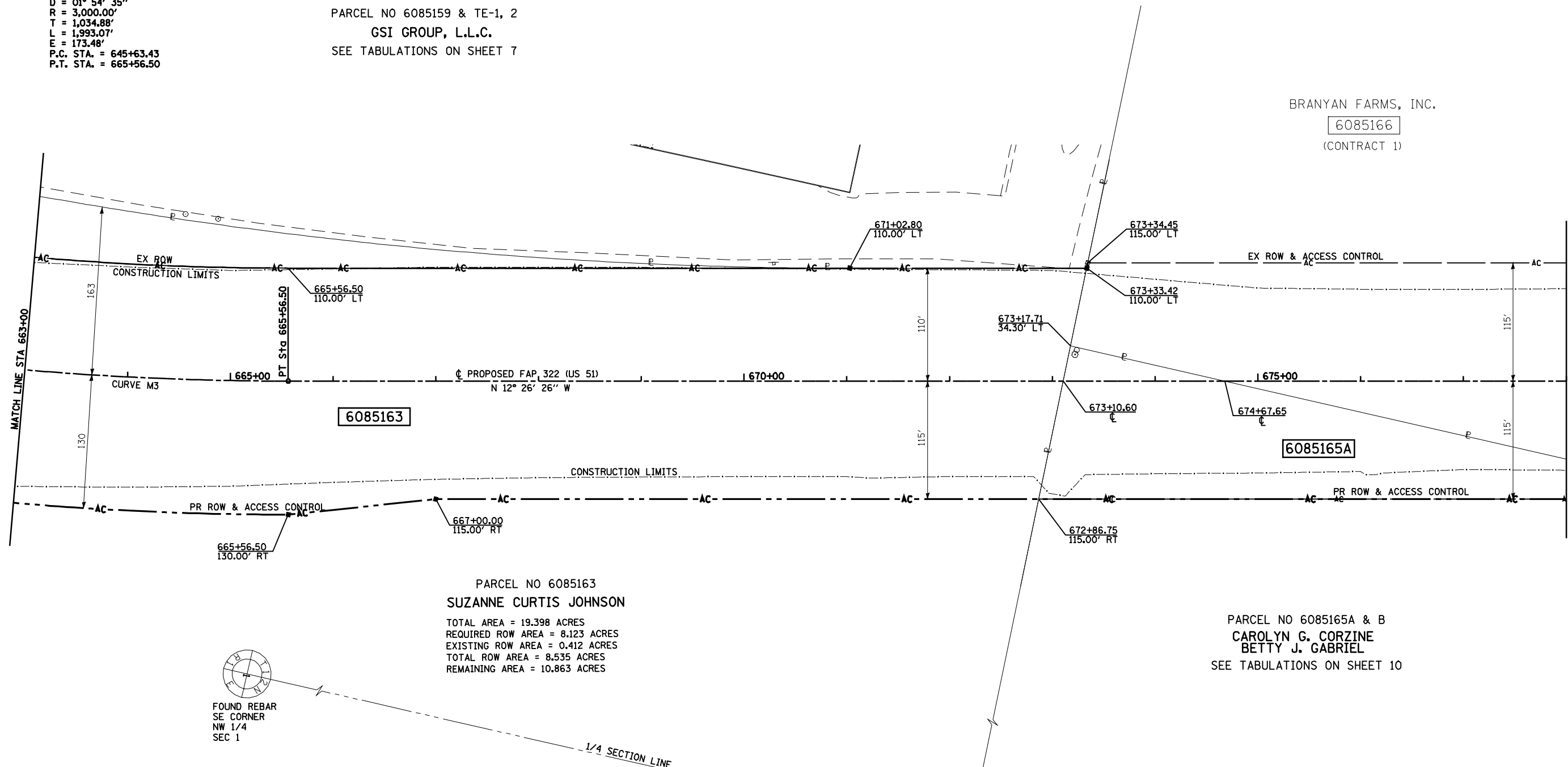
F.A.P. RTE.	SECTION	COUNTY	TOTAL SHEETS	SHEET NO.
322	11-12	CHRISTIAN	284	94
STA.		TO STA.		
FED. ROAD DIST. NO.		ILLINOIS	FED. AID PROJECT	

NW 1/4 SEC 1, T12N, R1E, 3RD PM

PROP. CURVE M3  
 PI STA. = 655+98.31  
 $\Delta = 38^\circ 03' 53''$  (LT)  
 $D = 01^\circ 54' 35''$   
 $R = 3,000.00'$   
 $T = 1,034.88'$   
 $L = 1,993.07'$   
 $E = 173.48'$   
 P.C. STA. = 645+63.43  
 P.T. STA. = 665+56.50

PARCEL NO 6085159 & TE-1, 2  
 GSI GROUP, L.L.C.  
 SEE TABULATIONS ON SHEET 7

BRANYAN FARMS, INC.  
 6085166  
 (CONTRACT 1)

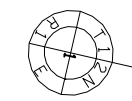


6085163

6085165A

PARCEL NO 6085163  
 SUZANNE CURTIS JOHNSON  
 TOTAL AREA = 19.398 ACRES  
 REQUIRED ROW AREA = 8.123 ACRES  
 EXISTING ROW AREA = 0.412 ACRES  
 TOTAL ROW AREA = 8.535 ACRES  
 REMAINING AREA = 10.863 ACRES

PARCEL NO 6085165A & B  
 CAROLYN G. CORZINE  
 BETTY J. GABRIEL  
 SEE TABULATIONS ON SHEET 10

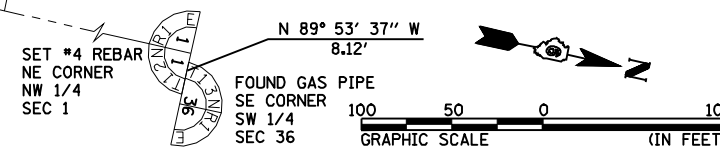


FOUND REBAR  
 SE CORNER  
 NW 1/4  
 SEC 1

1/4 SECTION LINE

NOTES:  
 BEARINGS ARE BASED ON THE ILLINOIS STATE PLANE  
 COORDINATE SYSTEM, NAD83 1986 - WEST ZONE  
 SURVEYED IN ENGLISH.

PLAT DISTANCES AND STATIONING ARE IN GRID ENGLISH.  
 TO CONVERT TO GROUND DIVIDE BY GRID FACTOR.  
 GRID FACTOR = 1.00003150



NW 1/4 SEC 1, T12N, R1E, 3RD PM

RIGHT OF WAY PLANS

ROUTE F.A.P. 322 (US 51)  
 SECTION 11-1  
 PROJECT  
 COUNTY CHRISTIAN  
 JOB NO. R-96-008-95  
 STA 663+00 TO STA 678+00  
 SCALE 1 = 50'