

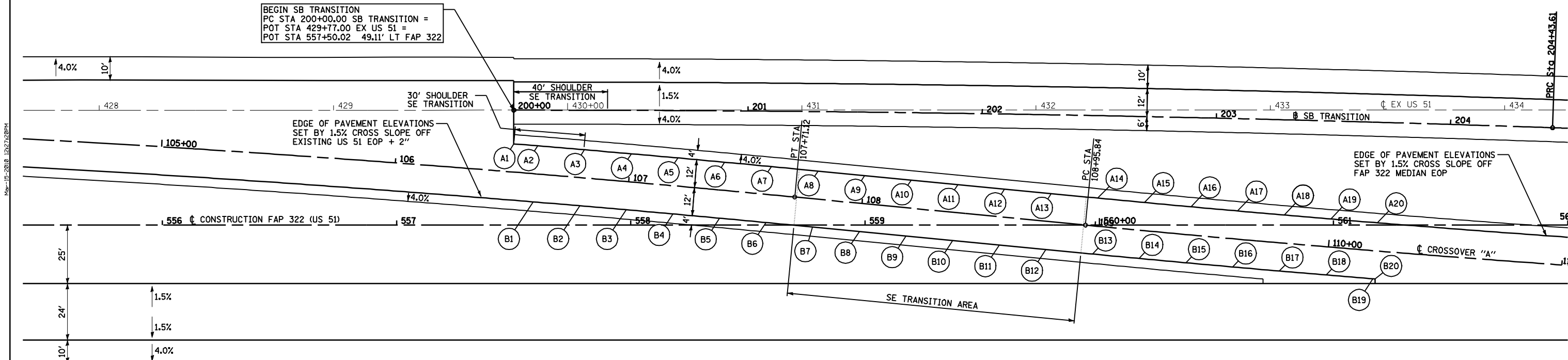
F.A.P. RTE.	SECTION	COUNTY	TOTAL SHEETS	SHEET NO.
322	11-12	CHRISTIAN	284	100
STA.		TO STA.		
FED. ROAD DIST. NO.		ILLINOIS FED. AID PROJECT		

POINT	FAP 322 (US 51)		CROSSOVER "A"		ELEVATION
	STATION	OFFSET	STATION	OFFSET	
A1	557+50.02	34.70 LT	106+49.76	12.00 LT	640.70
A2	557+60.24	33.86 LT	106+60.00	12.00 LT	640.71
A3	557+80.20	32.19 LT	106+80.00	12.00 LT	640.71
A4	558+00.16	30.47 LT	107+00.00	12.00 LT	640.73
A5	558+20.11	28.70 LT	107+20.00	12.00 LT	640.79
A6	558+40.06	26.88 LT	107+40.00	12.00 LT	640.87
A7	558+60.00	25.00 LT	107+60.00	12.00 LT	640.98
A8	558+79.92	23.09 LT	107+80.00	12.00 LT	641.10
A9	558+99.83	21.17 LT	108+00.00	12.00 LT	641.21
A10	559+19.74	19.24 LT	108+20.00	12.00 LT	641.31
A11	559+39.65	17.32 LT	108+40.00	12.00 LT	641.42
A12	559+59.55	15.40 LT	108+60.00	12.00 LT	641.52
A13	559+79.46	13.48 LT	108+80.00	12.00 LT	641.63
A14	559+99.36	11.56 LT	109+00.00	10.00 RT	642.06
A15	560+19.24	9.68 LT	109+20.00	12.00 LT	641.86
A16	560+39.13	7.84 LT	109+40.00	12.00 LT	641.97
A17	560+59.02	6.06 LT	109+60.00	12.00 LT	642.06
A18	560+78.91	4.32 LT	109+80.00	12.00 LT	642.13
A19	560+98.81	2.64 LT	110+00.00	12.00 LT	642.18
A20	561+18.72	1.00 LT	110+20.00	12.00 LT	642.22

SB TRANSITION CURVE #1 DATA:
 PI STA = 202+21.83
 = 559+71.85 49.15' LT FAP 322
 $\Delta = 1^\circ 57' 19''$ (RT)
 $D = 0^\circ 26' 27''$
 $R = 13,000.00'$
 $T = 221.83'$
 $L = 443.61'$
 $E = 1.89'$
 $SE = NC$
 PC STA = 200+00.00
 = 557+50.02 49.11' LT FAP 322
 PRC STA = 204+43.61
 = 561+93.55 41.61' LT FAP 322

CROSSOVER "A" CURVE #2 DATA:
 PI STA = 112+81.06
 = 563+77.51 37.00' RT FAP 322
 $\Delta = 5^\circ 30' 49''$ (LT)
 $D = 0^\circ 42' 58''$
 $R = 8,000.00'$
 $T = 385.22'$
 $L = 769.84'$
 $E = 9.27'$
 $SE = NC$
 PC STA = 108+95.84
 = 559+94.08 0.01' LT FAP 322
 PT STA = 116+65.68
 = 567+62.73 37.00' RT FAP 322

BEGIN SB TRANSITION
 PC STA 200+00.00 SB TRANSITION =
 POT STA 429+77.00 EX US 51 =
 POT STA 557+50.02 49.11' LT FAP 322

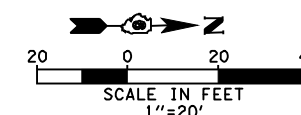


CROSSOVER "A" SE DATA:
 TRANSITION SE:
 STA 107+72 (-1.5%) TO STA 108+95 (+1.5%)

POINT	FAP 322 (US 51)		CROSSOVER "A"		ELEVATION
	STATION	OFFSET	STATION	OFFSET	
B1	557+58.27	9.95 LT	106+60.00	12.00 RT	640.35
B2	557+78.17	8.28 LT	106+80.00	12.00 RT	640.35
B3	557+98.07	6.56 LT	107+00.00	12.00 RT	640.37
B4	558+17.96	4.79 LT	107+20.00	12.00 RT	640.43
B5	558+37.84	2.98 LT	107+40.00	12.00 RT	640.51
B6	558+57.73	1.11 LT	107+60.00	12.00 RT	640.62
B7	558+77.62	0.80 RT	107+80.00	12.00 RT	640.79
B8	558+97.53	2.72 RT	108+00.00	12.00 RT	641.01
B9	559+17.43	4.65 RT	108+20.00	12.00 RT	641.23
B10	559+37.34	6.57 RT	108+40.00	12.00 RT	641.46
B11	559+57.25	8.49 RT	108+60.00	12.00 RT	641.68
B12	559+77.16	10.41 RT	108+80.00	12.00 RT	641.90
B13	559+97.07	12.33 RT	109+00.00	12.00 RT	642.09
B14	560+17.01	14.22 RT	109+20.00	12.00 RT	642.22
B15	560+36.96	16.06 RT	109+40.00	12.00 RT	642.33
B16	560+56.91	17.85 RT	109+60.00	12.00 RT	642.42
B17	560+76.86	19.59 RT	109+80.00	12.00 RT	642.49
B18	560+96.82	21.28 RT	110+00.00	12.00 RT	642.54
B19	561+16.78	22.92 RT	110+20.00	12.00 RT	642.58
B20	561+17.79	23.00 RT	110+21.01	12.00 RT	642.58

CROSSOVER "A" CURVE #1 DATA:
 PI STA = 103+85.86
 = 554+85.86 49.07' LT FAP 322
 $\Delta = 5^\circ 31' 22''$ (RT)
 $D = 0^\circ 42' 58''$
 $R = 8,000.00'$
 $T = 385.86'$
 $L = 771.12'$
 $E = 9.30'$
 $SE = NC$
 PC STA = 100+00.00
 = 551+00.00 49.01' LT FAP 322
 PT STA = 107+71.12
 = 558+69.93 12.00' LT FAP 322

NOTES:
 ALL STATIONS, OFFSETS, AND ELEVATIONS SHOWN
 ARE FOR FINAL PAVING.
 SEE SHEETS 75 & 76 FOR PLAN AND PROFILES.



REVISIONS	
NAME	DATE

ILLINOIS DEPARTMENT OF TRANSPORTATION
 GEOMETRIC DETAILS
 CROSSOVER "A"
 FAP 322 (US 51)
 SECTION 11-12
 CHRISTIAN COUNTY
 SCALE: 1"=20'
 DATE: 8/22/06
 DRAWN BY: SEB
 CHECKED BY: TLD

STA 561+45.0
 16' AGG FE

Mo-15-2018 12:27:20PM

S:\FILE4