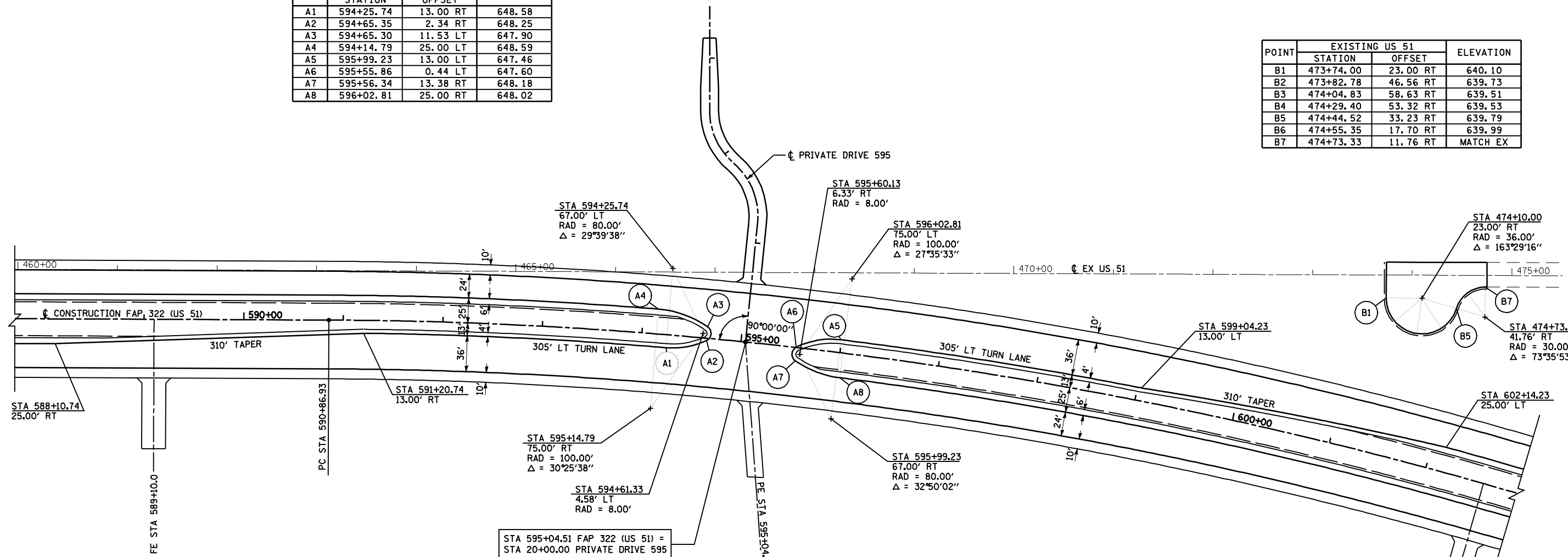


F.A.P. RTE.	SECTION	COUNTY	TOTAL SHEETS	SHEET NO.
322	11-12	CHRISTIAN	284	102
STA.		TO STA.		
FED. ROAD DIST. NO.	ILLINOIS	FED. AID PROJECT		

POINT	FAP 322 (US 51)		ELEVATION
	STATION	OFFSET	
A1	594+25.74	13.00 RT	648.58
A2	594+65.35	2.34 RT	648.25
A3	594+65.30	11.53 LT	647.90
A4	594+14.79	25.00 LT	648.59
A5	595+99.23	13.00 LT	647.46
A6	595+55.86	0.44 LT	647.60
A7	595+56.34	13.38 RT	648.18
A8	596+02.81	25.00 RT	648.02

POINT	EXISTING US 51		ELEVATION
	STATION	OFFSET	
B1	473+74.00	23.00 RT	640.10
B2	473+82.78	46.56 RT	639.73
B3	474+04.83	58.63 RT	639.51
B4	474+29.40	53.32 RT	639.53
B5	474+44.52	33.23 RT	639.79
B6	474+55.35	17.70 RT	639.99
B7	474+73.33	11.76 RT	MATCH EX



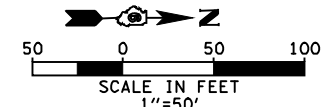
FAP 322 (US 51) CURVE *M1 DATA:
 PI STA = 600+54.42
 $\Delta = 25^\circ 22' 36''$ (RT)
 $D = 1^\circ 20' 00''$
 $R = 4,297.18'$
 $T = 967.49'$
 $L = 1,903.25'$
 $E = 107.57'$
 $SE = 4.2\%$
 PC STA = 590+86.93
 PT STA = 609+90.18
 SE ATTAINED STA 589+20 TO STA 591+50
 (TR STA 589+20 TO STA 589+61)
 SE REMOVED STA 609+27 TO STA 611+57
 (TR STA 611+16 TO STA 611+57)

STA 595+04.51 FAP 322 (US 51) =
 STA 20+00.00 PRIVATE DRIVE 595

NOTES:
 ALL STATIONS, OFFSETS, AND ELEVATIONS SHOWN ARE FOR FINAL PAVING.
 SEE SHEETS 61 & 79 FOR PLAN AND PROFILES.

REVISIONS	
NAME	DATE

ILLINOIS DEPARTMENT OF TRANSPORTATION
 GEOMETRIC DETAILS
 MEDIAN CROSSOVER - STA 595+05
 FAP 322 (US 51)
 SECTION 11-12
 CHRISTIAN COUNTY
 SCALE: 1"=50'
 DATE: 8/22/06
 DRAWN BY: SEB
 CHECKED BY: TLD



11-15-2018 12:27:25PM
 \$FILE\$