





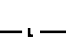
F.A.P. RTE.	SECTION	COUNTY	TOTAL SHEETS	SHEET NO.
322	11-12	CHRISTIAN	284	142
STA.	TO STA.			
FED. ROAD DIST. NO.	ILLINOIS	FED. AID PROJECT		

PERFORMANCE REQUIREMENTS

NOTE: These performance requirements shall be the minimum acceptable standards of photometric performance for the luminaire.

ILLUMINATION:	Average Horizontal Illumination, (Eave)	9.0 Lux
	Uniformity Ratio, (Eave/Emin)	3.0
LUMINANCE:	Average Luminance, (Lave)	0.6 Cd/sq m
	Uniformity Ratios: (Lave/Lmin)	3.5
	(Lmax/Lmin)	6.0
	Maximum Veiling Luminance Ratio: (Lv/Lave)	0.3

LEGEND

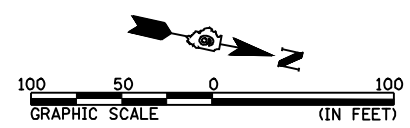
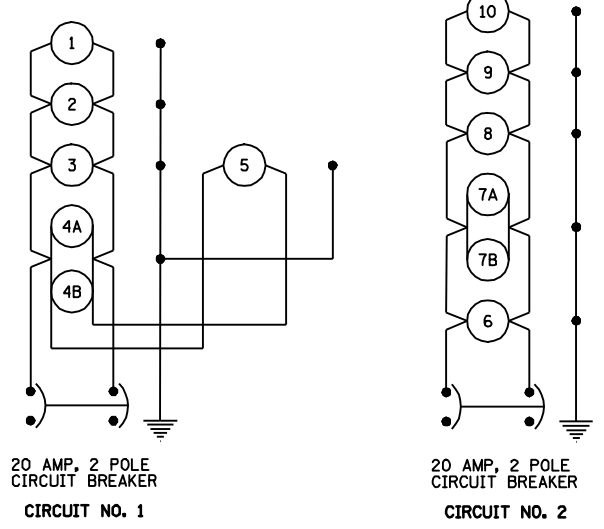
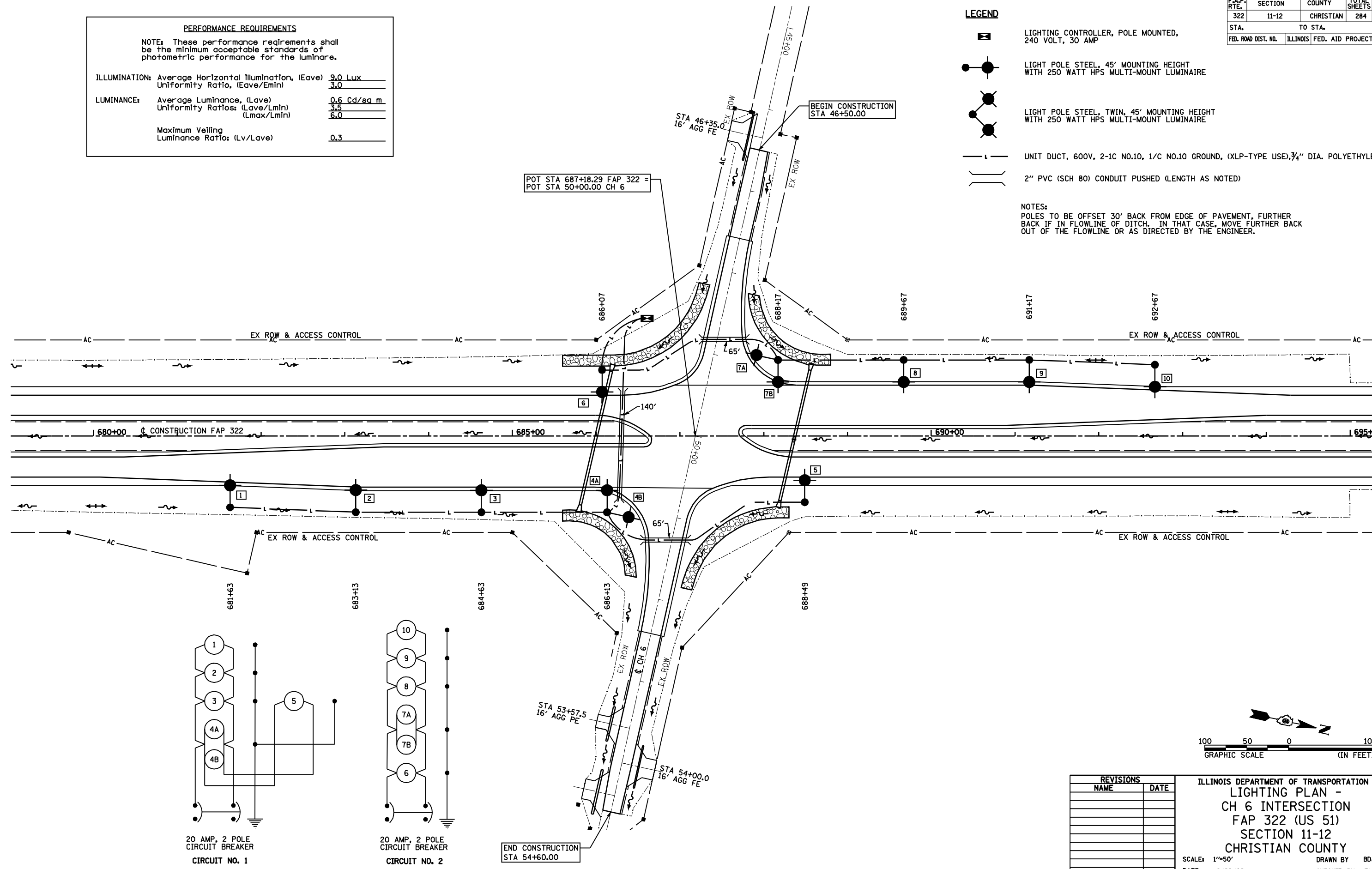
-  LIGHTING CONTROLLER, POLE MOUNTED, 240 VOLT, 30 AMP
-  LIGHT POLE STEEL, 45' MOUNTING HEIGHT WITH 250 WATT HPS MULTI-MOUNT LUMINAIRE
-  LIGHT POLE STEEL, TWIN, 45' MOUNTING HEIGHT WITH 250 WATT HPS MULTI-MOUNT LUMINAIRE
-  UNIT DUCT, 600V, 2-1C NO.10, 1/C NO.10 GROUND, (XLP-TYPE USE), 3/4" DIA. POLYETHYLENE
-  2" PVC (SCH 80) CONDUIT PUSHED (LENGTH AS NOTED)

NOTES:
 POLES TO BE OFFSET 30' BACK FROM EDGE OF PAVEMENT, FURTHER BACK IF IN FLOWLINE OF DITCH. IN THAT CASE, MOVE FURTHER BACK OUT OF THE FLOWLINE OR AS DIRECTED BY THE ENGINEER.

POT STA 687+18.29 FAP 322 =
 POT STA 50+00.00 CH 6

BEGIN CONSTRUCTION
 STA 46+50.00

END CONSTRUCTION
 STA 54+60.00



REVISIONS	
NAME	DATE

ILLINOIS DEPARTMENT OF TRANSPORTATION
 LIGHTING PLAN -
 CH 6 INTERSECTION
 FAP 322 (US 51)
 SECTION 11-12
 CHRISTIAN COUNTY

SCALE: 1"=50'
 DATE: 8/22/06

DRAWN BY: BDJ
 CHECKED BY: TLD

8/22/06 11:22:40 AM