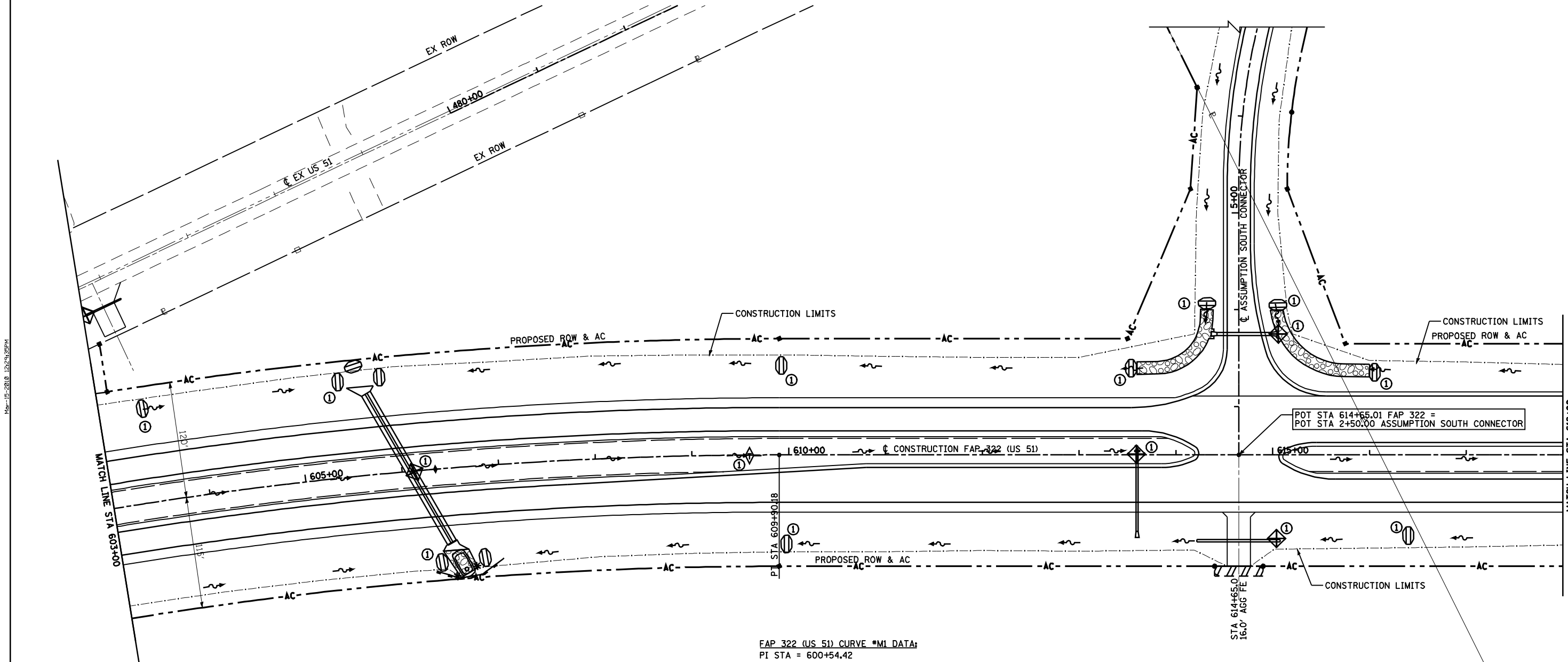


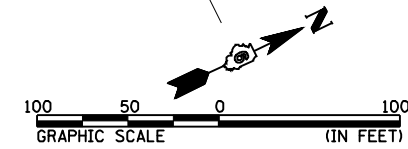
F.A.P. RTE.	SECTION	COUNTY	TOTAL SHEETS	SHEET NO.
322	11-12	CHRISTIAN	284	153
STA.	TO STA.			
FED. ROAD DIST. NO.	ILLINOIS	FED. AID PROJECT		

NE 1/4 SEC 11, T12N, R1E, 3RD PM



FAP 322 (US 51) CURVE *MI DATA:
 PI STA = 600+54.42
 $\Delta = 25^\circ 22' 36''$ (RT)
 $D = 1^\circ 20' 00''$
 $R = 4,297.18'$
 $T = 967.49'$
 $L = 1,903.25'$
 $E = 107.57'$
 $SE = 4.2\%$
 PC STA = 590+86.93
 PT STA = 609+90.18
 SE ATTAINED STA 589+20 TO STA 591+50
 (TR STA 589+20 TO STA 589+61)
 SE REMOVED STA 609+27 TO STA 611+57
 (TR STA 611+16 TO STA 611+57)

NW 1/4 SEC 12, T12N, R1E, 3RD PM



REVISIONS	
NAME	DATE

ILLINOIS DEPARTMENT OF TRANSPORTATION
 STORM WATER POLLUTION
 PREVENTION PLAN
 FAP 322 (US 51)
 SECTION 11-12
 CHRISTIAN COUNTY
 SCALE: 1"=50'
 DATE: 8/22/06
 DRAWN BY: BGJ
 CHECKED BY: SEB
 FAP 322 (US 51) STA 603+00 TO STA 618+00

Mo-15-2018 12:29:35PM

SFILEX