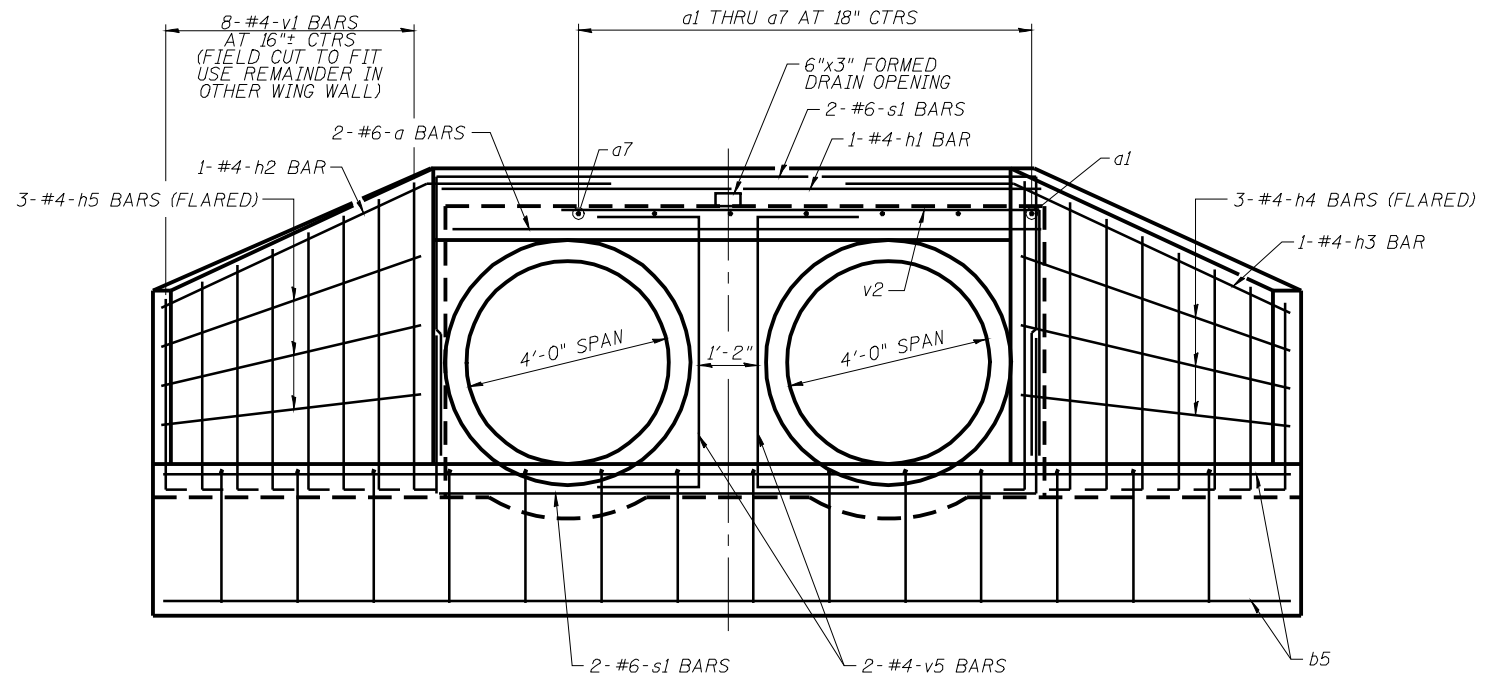
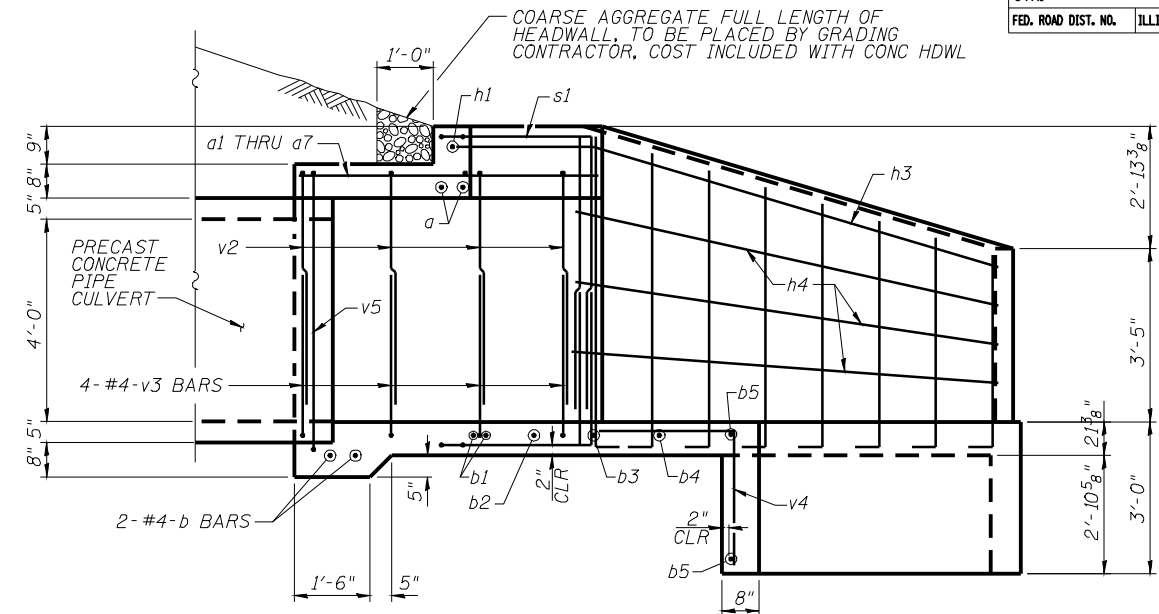


F.A.P. RTE.	SECTION	COUNTY	TOTAL SHEETS	SHEET NO.
322	11-12	CHRISTIAN	284	169
STA.	TO STA.			
FED. ROAD DIST. NO.	ILLINOIS	FED. AID PROJECT		



**END ELEVATION**

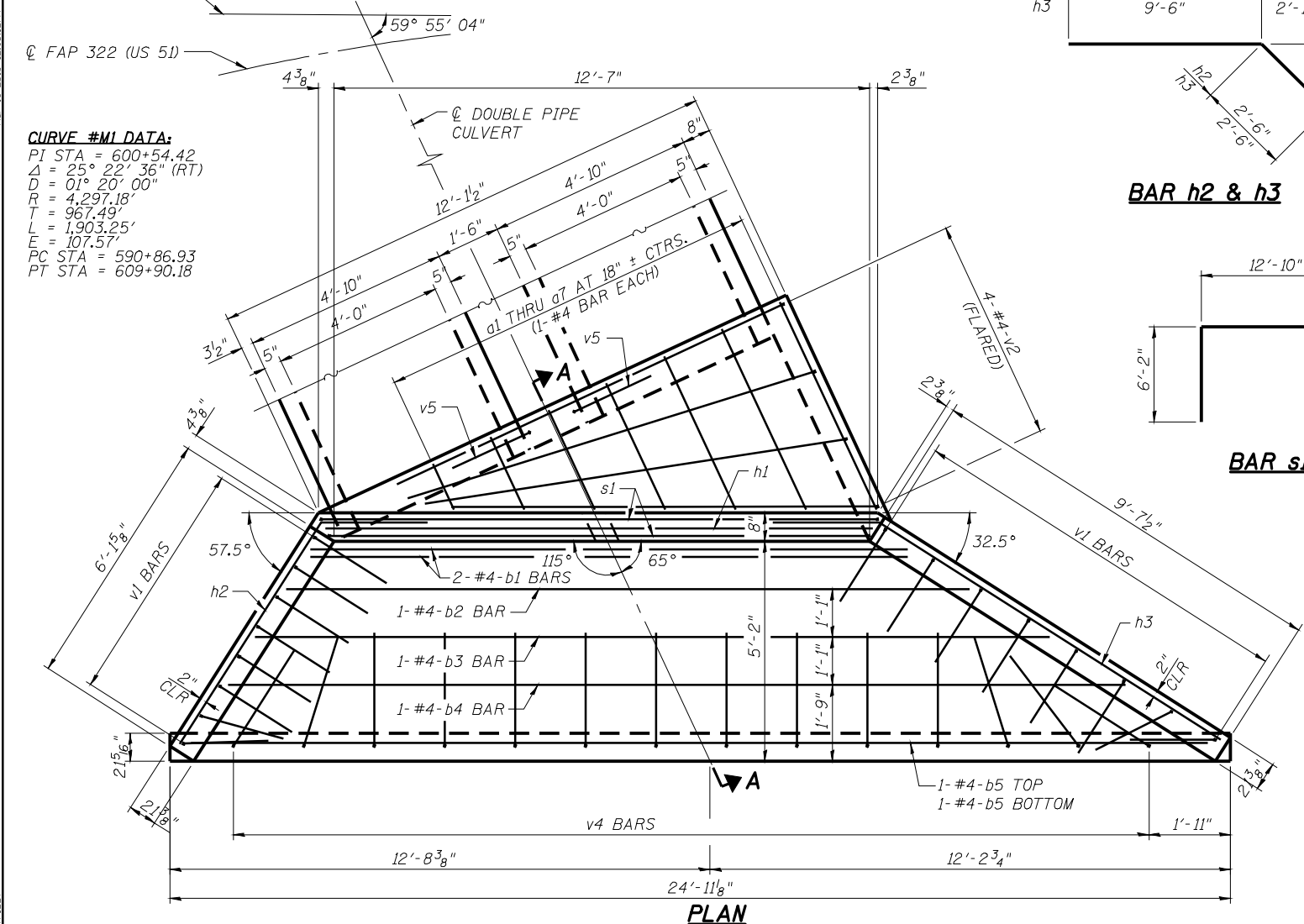


**SECTION A-A**

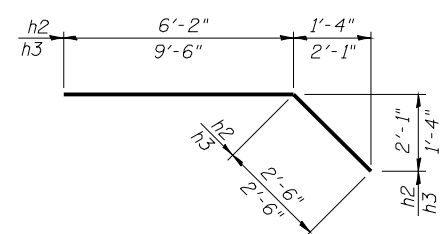
**BILL OF MATERIAL**

Bar	No.	Size	Length	Shape	
a	2	#6	13'-0"	—	
a1	1	#4	5'-0"	—	
a2	1	#4	4'-4"	—	
a3	1	#4	3'-8"	—	
a4	1	#4	3'-0"	—	
a5	1	#4	2'-4"	—	
a6	1	#4	1'-8"	—	
a7	1	#4	1'-0"	—	
b	2	#4	11'-7"	—	
b1	2	#4	14'-0"	—	
b2	1	#4	16'-7"	—	
b3	1	#4	19'-0"	—	
b4	1	#4	21'-6"	—	
b5	2	#4	24'-4"	—	
h1	1	#4	12'-9"	—	
h2	1	#4	8'-8"	—	
h3	1	#4	12'-0"	—	
h4	3	#4	9'-3"	—	
h5	3	#4	5'-10"	—	
s1	4	#6	25'-2"	—	
v1	8	#4	12'-7"	—	
v2	4	#4	14'-9"	—	
v3	4	#4	13'-5"	—	
v4	14	#4	5'-4"	—	
v5	2	#4	9'-4"	—	
CONCRETE HEADWALLS				CU YD	9.3
REINFORCEMENT BARS				POUND	570

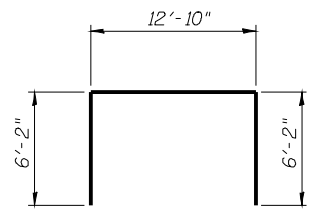
LOCAL TANGENT TO C FAP 322 (US 51) AT STA 606+09.00



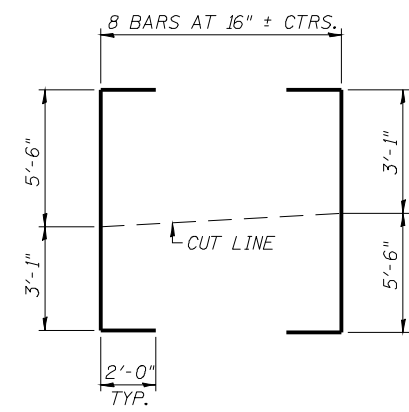
**PLAN**



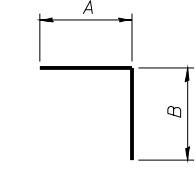
**BAR h2 & h3**



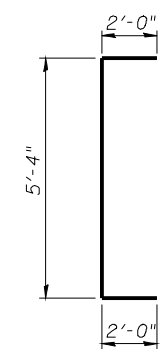
**BAR s1**



**FIELD CUTTING DIAGRAM BARS v1**



**BARS v2 THRU v4**



**BAR v5**

NOTES:  
 TABLE FOR (1) HEADWALL ONLY. TWO (2) HEADWALLS REQUIRED. BAR DIMENSIONS ARE OUT TO OUT.  
 CONCRETE HEADWALLS SHALL BE USED THROUGHOUT.  
 EXPOSED EDGES SHALL BE BEVELED 3/4".  
 REINFORCEMENT BARS SHALL CONFORM TO THE REQUIREMENTS OF ASSHTO M-31, M-42, M-53, GRADE 60  
 NOT TO SCALE OR PROPER ORIENTATION.

REVISIONS	
NAME	DATE

ILLINOIS DEPARTMENT OF TRANSPORTATION  
 CAST-IN-PLACE END SECTIONS  
 STA 606+09.0 LT. & RT.  
 FAP 322 (US 51)  
 SECTION 11-12  
 CHRISTIAN COUNTY  
 SCALE: NOT TO SCALE  
 DATE: 8/22/06  
 DRAWN BY: B.G.J.  
 CHECKED BY: A.D.L.