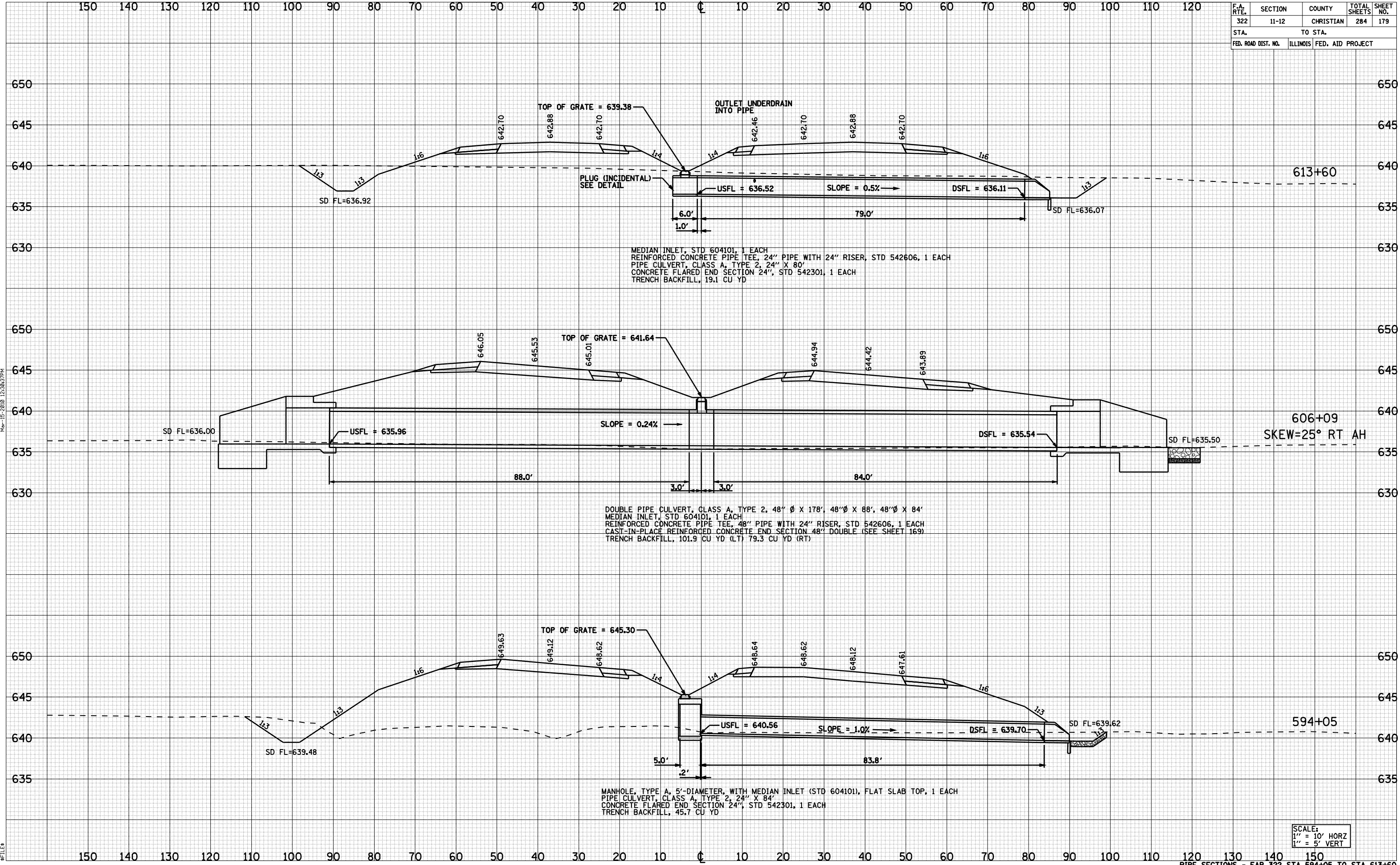


F.A. RTE.	SECTION	COUNTY	TOTAL SHEETS	SHEET NO.
322	11-12	CHRISTIAN	284	179
STA.		TO STA.		
FED. ROAD DIST. NO.		ILLINOIS	FED. AID PROJECT	



MEDIAN INLET, STD 604101, 1 EACH
 REINFORCED CONCRETE PIPE TEE, 24" PIPE WITH 24" RISER, STD 542606, 1 EACH
 PIPE CULVERT, CLASS A, TYPE 2, 24" X 80'
 CONCRETE FLARED END SECTION 24", STD 542301, 1 EACH
 TRENCH BACKFILL, 19.1 CU YD

DOUBLE PIPE CULVERT, CLASS A, TYPE 2, 48" Ø X 178', 48" Ø X 88', 48" Ø X 84'
 MEDIAN INLET, STD 604101, 1 EACH
 REINFORCED CONCRETE PIPE TEE, 48" PIPE WITH 24" RISER, STD 542606, 1 EACH
 CAST-IN-PLACE REINFORCED CONCRETE END SECTION 48" DOUBLE (SEE SHEET 169)
 TRENCH BACKFILL, 101.9 CU YD (LT) 79.3 CU YD (RT)

MANHOLE, TYPE A, 5'-DIAMETER, WITH MEDIAN INLET (STD 604101), FLAT SLAB TOP, 1 EACH
 PIPE CULVERT, CLASS A, TYPE 2, 24" X 84'
 CONCRETE FLARED END SECTION 24", STD 542301, 1 EACH
 TRENCH BACKFILL, 45.7 CU YD

SCALE:
 1" = 10' HORZ
 1" = 5' VERT

DATE	
BY	
SURVEYED	
PLOTTED	
TEMPLATE	
NOTE BOOK	
AREAS CHECKED	

DATE	
BY	
SURVEYED	
PLOTTED	
TEMPLATE	
NOTE BOOK	
AREAS CHECKED	

Nov-15-2010 12:38:37PM

#FILE#