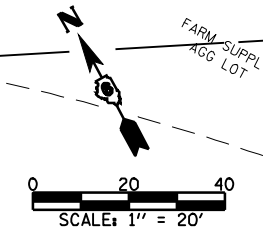


24,131.7 SQ FT

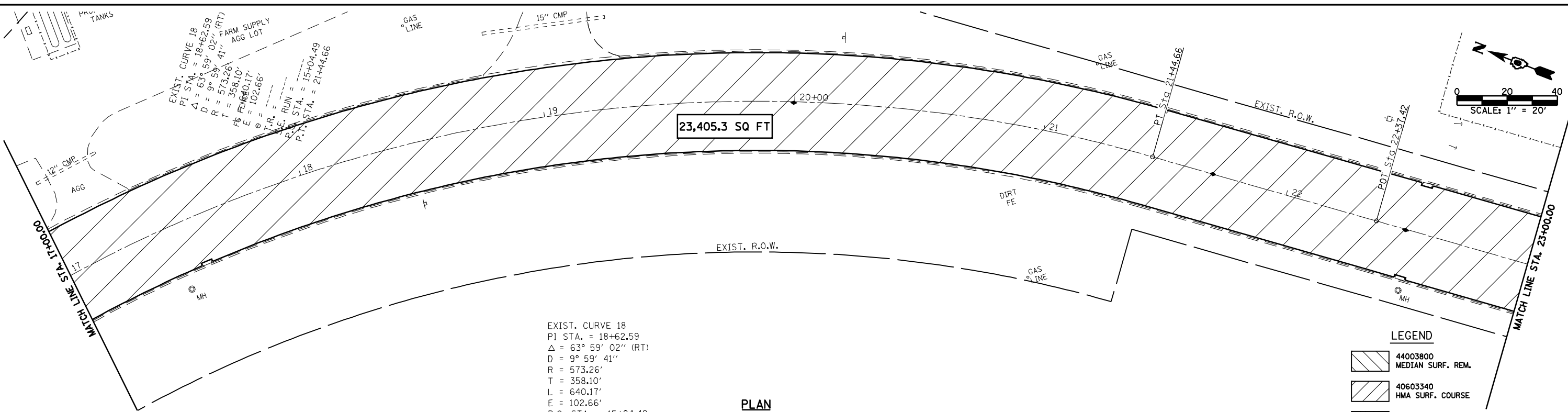
775.0 SQ FT



PLAN

LEGEND

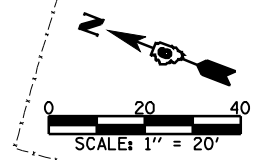
	44003800 MEDIAN SURF. REM.
	40603340 HMA SURF. COURSE
	40800050 INCIDENTAL BIT SURF.



23,405.3 SQ FT

EXIST. CURVE 18
 PI STA. = 18+62.59
 $\Delta = 63^\circ 59' 02''$ (RT)
 $D = 9^\circ 59' 41''$
 $R = 573.26'$
 $T = 358.10'$
 $L = 640.17'$
 $E = 102.66'$
 P.C. STA. = 15+04.49
 P.T. STA. = 21+44.66

EXIST. CURVE 18
 PI STA. = 18+62.59
 $\Delta = 63^\circ 59' 02''$ (RT)
 $D = 9^\circ 59' 41''$
 $R = 573.26'$
 $T = 358.10'$
 $L = 640.17'$
 $E = 102.66'$
 P.C. STA. = 15+04.49
 P.T. STA. = 21+44.66



PLAN

LEGEND

	44003800 MEDIAN SURF. REM.
	40603340 HMA SURF. COURSE
	40800050 INCIDENTAL BIT SURF.

FILE NAME =	USER NAME = laughlinr1	DESIGNED -	REVISED -	Allen Henderson & Associates, Inc. Civil and Structural Engineers Springfield, IL 62703 Phone: (217)544-8033 IL Design Firm No. 184-001907	PAVEMENT REMOVAL PLAN			F.A.P. RTE. 320	SECTION (242ZRS-4, N; 116RS-5)	COUNTY LOGAN	TOTAL SHEETS 32	SHEET NO. 13
PLOT SCALE = 40.0000' / IN.	CHECKED -	REVISED -	SCALE: 1" = 20'					SHEET NO. 13 OF 32 SHEETS	STA. 11+00.00 TO STA. 23+00.00	CONTRACT NO. 72998		
PLOT DATE = Mar-18-2010 02:16:50PM	DATE -	REVISED -				FED. ROAD DIST. NO.	ILLINOIS FED. AID PROJECT					
c:\pwwork\PIWIDOT\LAUGHLINRL\0818122\d672998-sht-plan-removal.dgn												