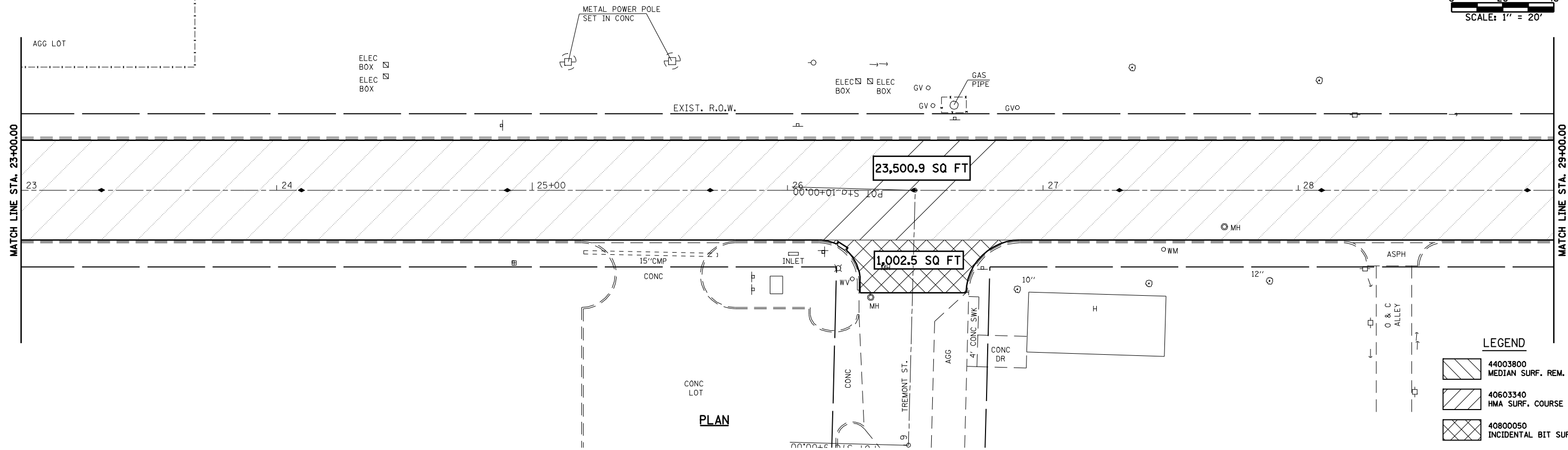
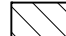
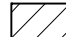



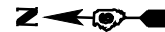


0 20 40
SCALE: 1" = 20'

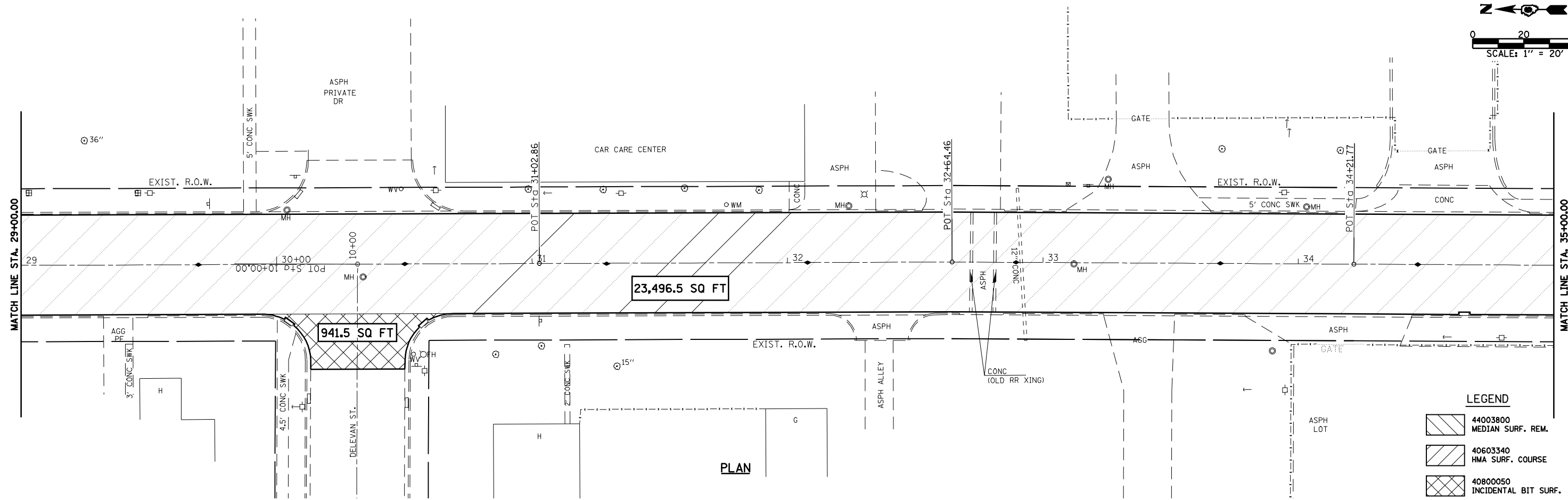


LEGEND

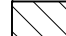
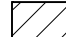

-  44003800
MEDIAN SURF. REM.
-  40603340
HMA SURF. COURSE
-  40800050
INCIDENTAL BIT SURF.




0 20 40
SCALE: 1" = 20'



LEGEND

-  44003800
MEDIAN SURF. REM.
-  40603340
HMA SURF. COURSE
-  40800050
INCIDENTAL BIT SURF.

FILE NAME =	USER NAME = laughlinr1	DESIGNED -	REVISED -		Allen Henderson & Associates, Inc. Civil and Structural Engineers Springfield, IL 62703 Phone: (217)544-8033 IL Design Firm No. 184-001907	PAVEMENT REMOVAL PLAN			F.A.P. R.T.E.	SECTION	COUNTY	TOTAL SHEETS	SHEET NO.
	PLOT SCALE = 40.0000' / IN.	DRAWN -	REVISED -						320	(24ZRS-4, N; 116RS-5	LOGAN	32	14
PLOT DATE = Mar-18-2010 02:16:53PM	CHECKED -	REVISED -	REVISED -	SCALE: 1" = 20' SHEET NO. 14 OF 32 SHEETS STA. 23+00.00 TO STA. 35+00.00			CONTRACT NO. 72998						
	DATE -	REVISED -	REVISED -				FED. ROAD DIST. NO. ILLINOIS FED. AID PROJECT						

c:\pwwork\PIWIDOT\LAUGHLINRL\0181122\d672998-sht-plan-removal.dgn