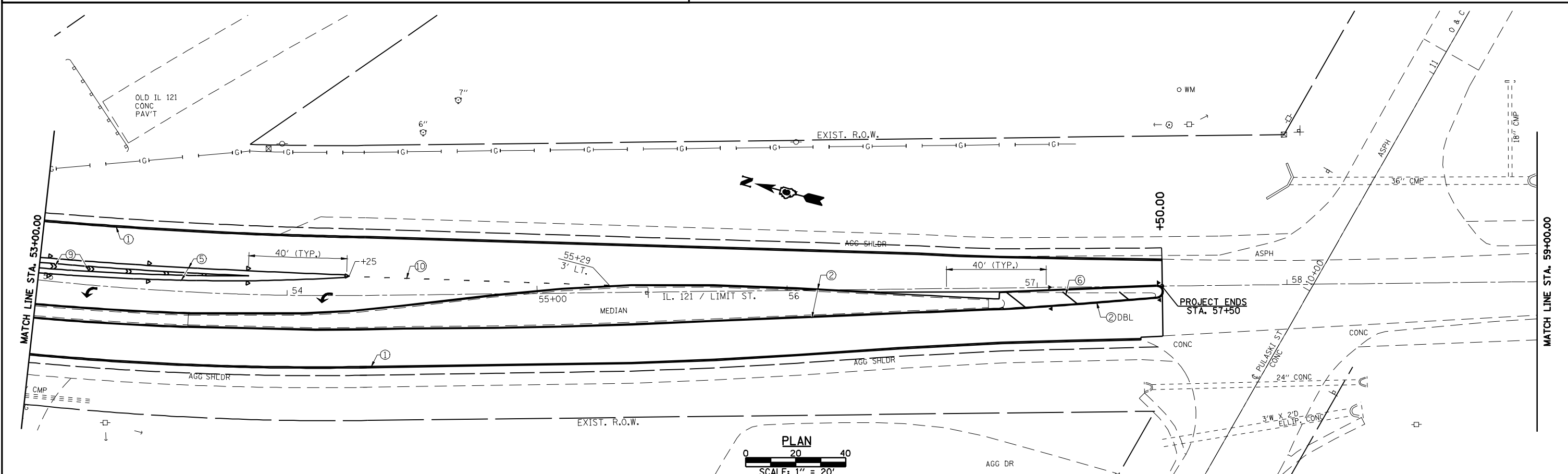



- PREFORMED PLASTIC PAVEMENT MARKING LEGEND**
- ① THERMOPLASTIC PAVEMENT MARKING, - LINE 5" (SOLID WHITE)
 - ② THERMOPLASTIC PAVEMENT MARKING, - LINE 5" (SOLID YELLOW)
 - ③ PREFORMED PLASTIC PAVEMENT MARKING, - TYPE B INLAID LINE 5" (10' DASH, 30' SKIP, WHITE)
 - ④ PREFORMED PLASTIC PAVEMENT MARKING, - TYPE B INLAID LINE 5" (10' DASH, 30' SKIP, YELLOW)
 - ⑤ THERMOPLASTIC PAVEMENT MARKING, - LINE 6" (SOLID WHITE)
 - ⑥ THERMOPLASTIC PAVEMENT MARKING, - LINE 12" (SOLID YELLOW)
 - ⑦ PREFORMED PLASTIC PAVEMENT MARKING, - TYPE B INLAID LINE 24" (SOLID WHITE)
 - ⑧ PREFORMED PLASTIC PAVEMENT MARKING, - TYPE B INLAID LETTERS AND SYMBOLS (WHITE)
 - ⑨ THERMOPLASTIC PAVEMENT MARKING, - LINE 12" (SOLID WHITE)
 - ⑩ PREFORMED PLASTIC PAVEMENT MARKING TYPE B INLAID LINE - 6" (2' DASH 6' SKIP) (WHITE)
- RAISED REFLECTIVE PAVEMENT MARKER LEGEND**
- YELLOW STRIPE
 - WHITE STRIPE
 - ◀ ONE-WAY AMBER MARKER
 - ◀ ONE-WAY CRYSTAL/OPAQUE MARKER
 - ◀ TWO-WAY AMBER MARKER
- PLAN
SCALE: 1" = 20'



| | | | | | | | | | | | | |
|-------------------------------------------------------------------------|------------------------|------------|-----------|------------------------------------------------------------------------------------------------------------------------------------------------------------------------------------------------------------------------------------------------------|------------------------------------------|---------------------------|--------------------------------|------------------------------|--------------|---------------------|---------------------------|--|
| FILE NAME = | USER NAME = laughlinr1 | DESIGNED - | REVISED - |  Allen Henderson & Associates, Inc. Civil and Structural Engineers Springfield, IL 62703 Phone: (217)544-8033 IL Design Firm No. 184-001907 | STRIPING AND PAVEMENT MARKER PLAN | | F.A.P. RTE. 320 | SECTION (242)RS-4, N 116RS-5 | COUNTY LOGAN | TOTAL SHEETS 32 | SHEET NO. 27 | |
| PLOT SCALE = 40.0000' / IN. | CHECKED - | REVISED - | REVISED - | | SCALE: 1" = 20' | SHEET NO. 27 OF 32 SHEETS | STA. 47+00.00 TO STA. 59+00.00 | CONTRACT NO. 72998 | | FED. ROAD DIST. NO. | ILLINOIS FED. AID PROJECT | |
| PLOT DATE = Mar-18-2010 02:17:30PM | DATE - | REVISED - | REVISED - | | | | | | | | | |
| <small>cp:\pwork\p\1001\LAUGHLINRL\0181122\d672998-sht-plan.dgn</small> | | | | | | | | | | | | |