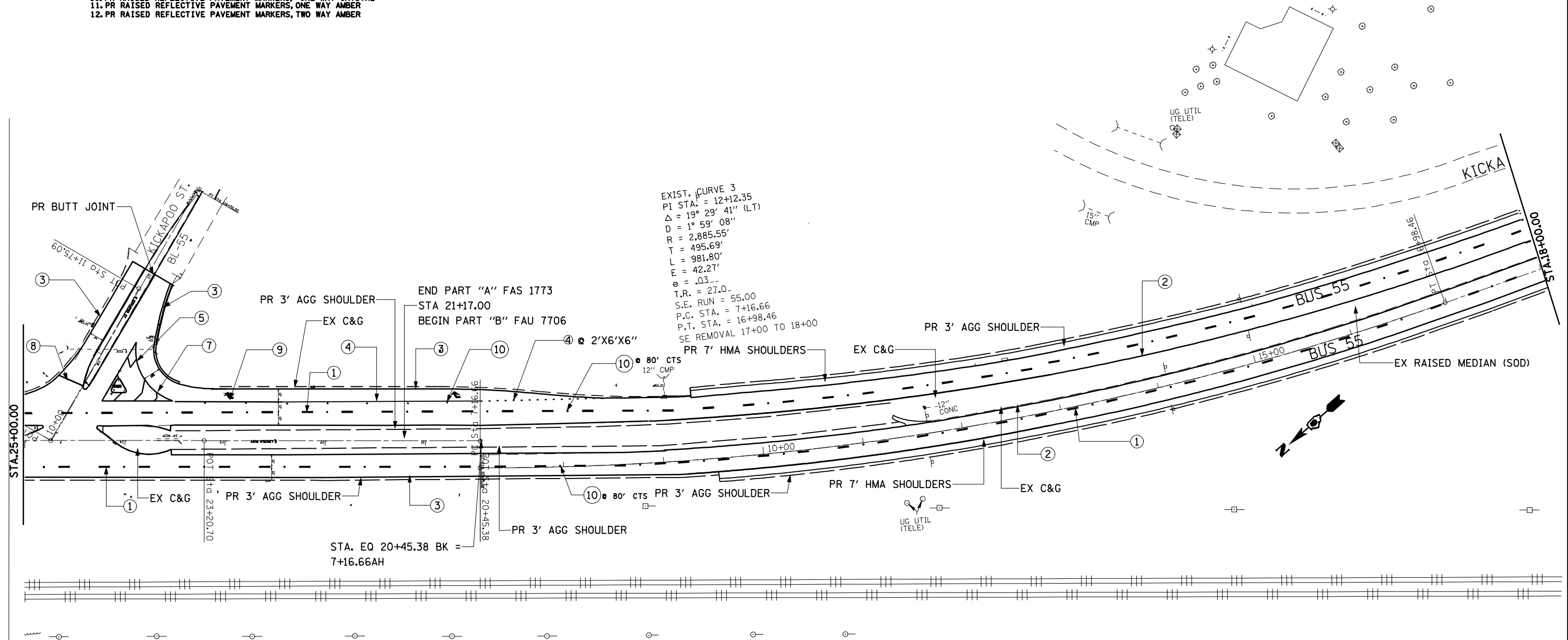


1. PR PREFORMED PLASTIC PAVEMENT MARKING, TYPE B (INLAID), LINE 5" (30' SKIP, 10' WHITE DASH)
2. PR URETHANE PAVEMENT MARKING, LINE 5" (SOLID YELLOW)
3. PR URETHANE PAVEMENT MARKING, LINE 5" (SOLID WHITE)
4. PR URETHANE PAVEMENT MARKING, LINE 6" (SOLID WHITE)
5. PR PREFORMED PLASTIC PAVEMENT MARKING, TYPE B (INLAID), LINE 8" (SOLID WHITE)
6. PR PREFORMED PLASTIC PAVEMENT MARKING, TYPE B (INLAID), LINE 12" (SOLID YELLOW)
7. PR PREFORMED PLASTIC PAVEMENT MARKING, TYPE B (INLAID), LINE 12" (SOLID WHITE)
8. PR PREFORMED PLASTIC PAVEMENT MARKING, TYPE B (INLAID), LINE 24" (SOLID WHITE)
9. PR PREFORMED PLASTIC PAVEMENT MARKING, TYPE B (INLAID), LETTERS & SYMBOLS (SOLID WHITE)
10. PR RAISED REFLECTIVE PAVEMENT MARKERS, ONE WAY CRYSTAL
11. PR RAISED REFLECTIVE PAVEMENT MARKERS, ONE WAY AMBER
12. PR RAISED REFLECTIVE PAVEMENT MARKERS, TWO WAY AMBER



EXIST. CURVE 3
 PI STA. = 12+12.35
 $\Delta = 19^\circ 29' 41''$ (LT)
 $D = 1^\circ 59' 08''$
 $R = 2,885.55'$
 $T = 495.69'$
 $L = 981.80'$
 $E = 42.27'$
 $e = .03$
 $T.R. = 27.0$
 $S.E. RUN = 55.00$
 $P.C. STA. = 7+16.66$
 $P.T. STA. = 16+98.46$
 SE REMOVAL 17+00 TO 18+00

STA. EQ 20+45.38 BK =
 7+16.66AH

* 1773/ 7706

FILE NAME = e:\pwork\pwork\LAUGHLIN\LAUGHLIN\201516193\1516193.dgn	USER NAME = laughlinr1	DESIGNED -	REVISED -	STATE OF ILLINOIS DEPARTMENT OF TRANSPORTATION	PLAN VIEW BEGIN PART "B" FAU 7706			F.A. RTE.	SECTION	COUNTY	TOTAL SHEETS	SHEET NO.
	PLOT SCALE = 100.0000' / IN.	CHECKED -	REVISED -		SCALE: 50	SHEET NO.	OF SHEETS	STA. 25+00.00 TO STA. 18+00.00	21RS-4 22RS-5	LOGAN	31	18
PLOT DATE = Apr-09-2010 11:28:39AM	DATE -	REVISED -	REVISED -	CONTRACT NO. 72A44 ILLINOIS FED. AID PROJECT								