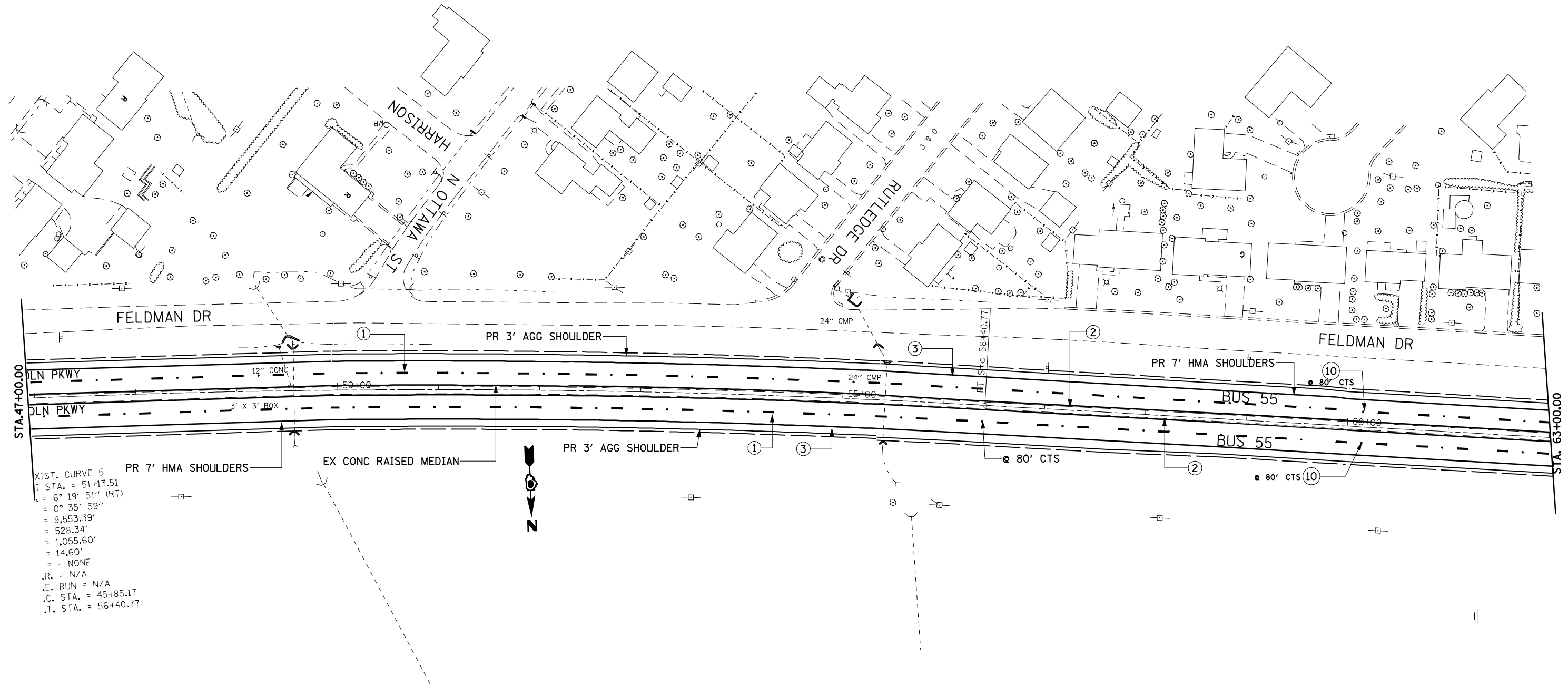


1. PR PREFORMED PLASTIC PAVEMENT MARKING, TYPE B (INLAID), LINE 5" (30' SKIP, 10' WHITE DASH)
2. PR URETHANE PAVEMENT MARKING, LINE 5" (SOLID YELLOW)
3. PR URETHANE PAVEMENT MARKING, LINE 5" (SOLID WHITE)
4. PR URETHANE PAVEMENT MARKING, LINE 6" (SOLID WHITE)
5. PR PREFORMED PLASTIC PAVEMENT MARKING, TYPE B (INLAID), LINE 8" (SOLID WHITE)
6. PR PREFORMED PLASTIC PAVEMENT MARKING, TYPE B (INLAID), LINE 12" (SOLID YELLOW)
7. PR PREFORMED PLASTIC PAVEMENT MARKING, TYPE B (INLAID), LINE 12" (SOLID WHITE)
8. PR PREFORMED PLASTIC PAVEMENT MARKING, TYPE B (INLAID), LINE 24" (SOLID WHITE)
9. PR PREFORMED PLASTIC PAVEMENT MARKING, TYPE B (INLAID), LETTERS & SYMBOLS (SOLID WHITE)
10. PR RAISED REFLECTIVE PAVEMENT MARKERS, ONE WAY CRYSTAL
11. PR RAISED REFLECTIVE PAVEMENT MARKERS, ONE WAY AMBER
12. PR RAISED REFLECTIVE PAVEMENT MARKERS, TWO WAY AMBER



XIST. CURVE 5  
 I STA. = 51+13.51  
 = 6° 19' 51" (RT)  
 = 0° 35' 59"  
 = 9,553.39'  
 = 528.34'  
 = 1,055.60'  
 = 14.60'  
 = - NONE  
 .R. = N/A  
 .E. RUN = N/A  
 .C. STA. = 45+85.17  
 .T. STA. = 56+40.77

\* 1773/ 7706

FILE NAME =	USER NAME = laughlinr1	DESIGNED -	REVISED -	<b>STATE OF ILLINOIS DEPARTMENT OF TRANSPORTATION</b>	<b>PLAN VIEW PART "B" FAU 7706</b>			F.A. RTE.	SECTION	COUNTY	TOTAL SHEETS	SHEET NO.	
er:\pwork\PIWIDOT\LAUGHLINRL\0151693\st	ests.dgn	DRAWN -	REVISED -		SCALE: 50	SHEET NO.	OF SHEETS	STA. 47+00.00 TO STA. 63+00.00	*	21 RS-4 22RS-5	LOGAN	31	21
		CHECKED -	REVISED -										
		DATE -	REVISED -										
	PLOT DATE = Apr-09-2010 11:43:45AM							CONTRACT NO. 72A44			ILLINOIS FED. AID PROJECT		