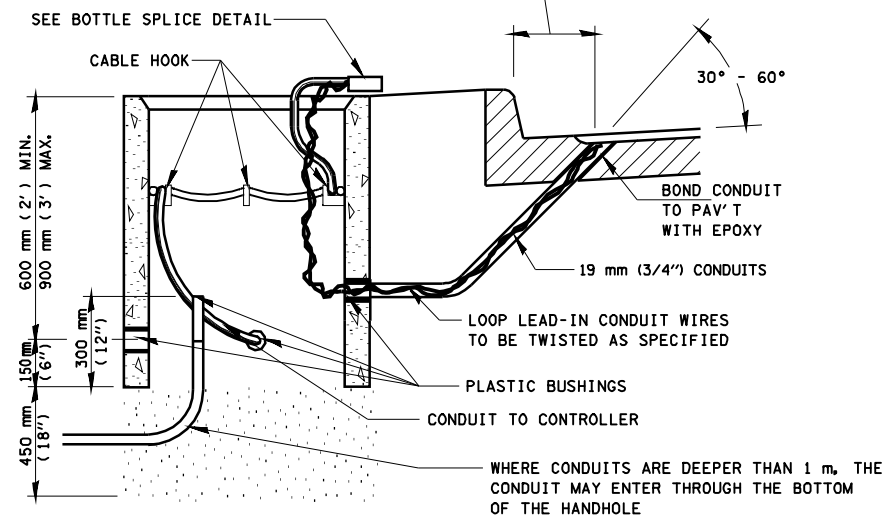
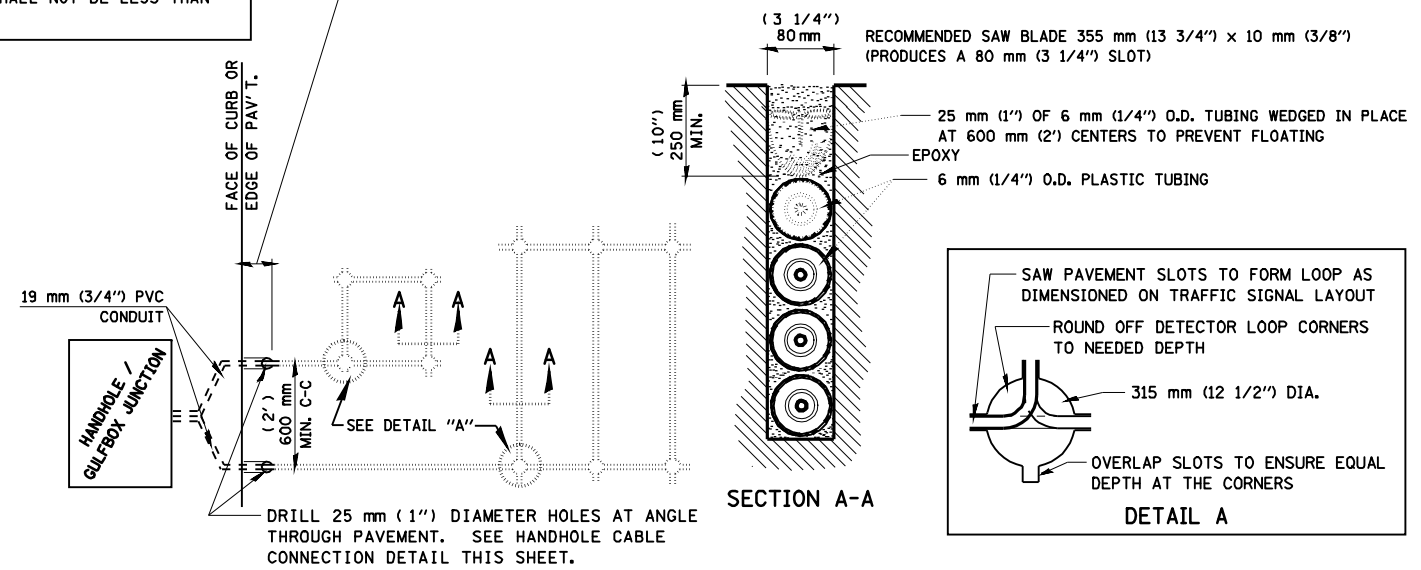


LENGTH OF SLACK FOR LOOP LEAD-INS SHALL PROVIDE FOR MAKING THE SPLICE ON TOP OF THE HANDHOLE AND ONE COMPLETE LOOP OF THE INTERIOR OF THE HANDHOLE, THE SPLICE SHALL BE SUPPORTED BY A CABLE HOOK.

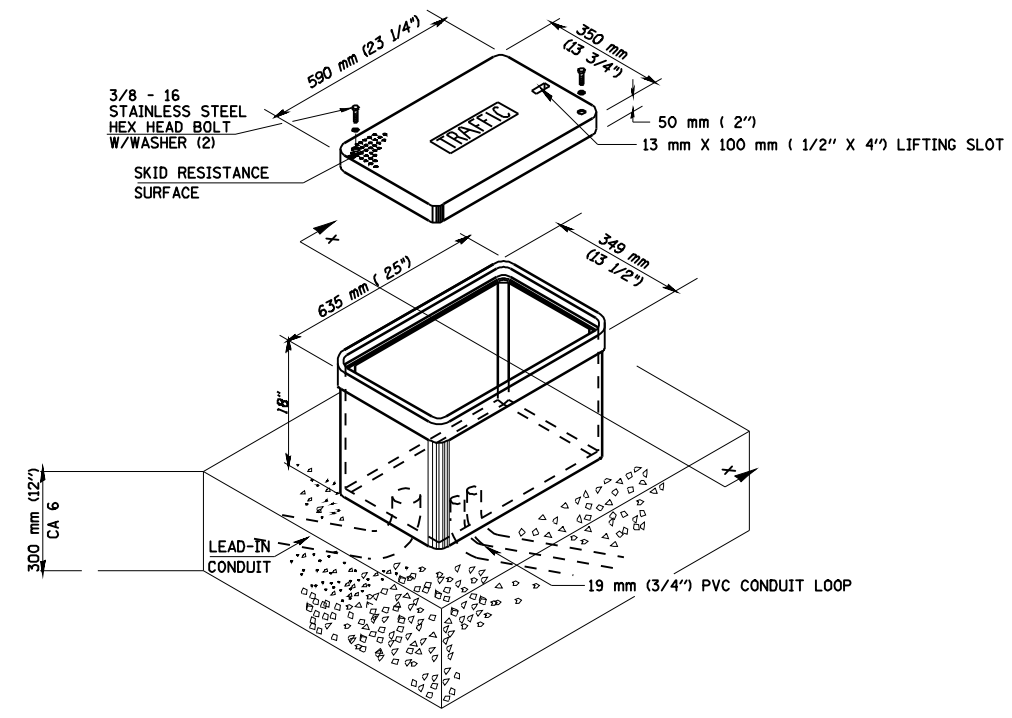
THE LOOP LEAD-IN CONDUIT HOLES SHALL BE PLACED AS CLOSE TO THE CURB AS POSSIBLE TO PERMIT SAW OVERLAP WITHOUT SCARRING FACE OF CURB.
IN NON-CURB LOCATIONS THE DISTANCE SHALL NOT BE LESS THAN 150 mm (6").



HANDHOLE CABLE CONNECTIONS

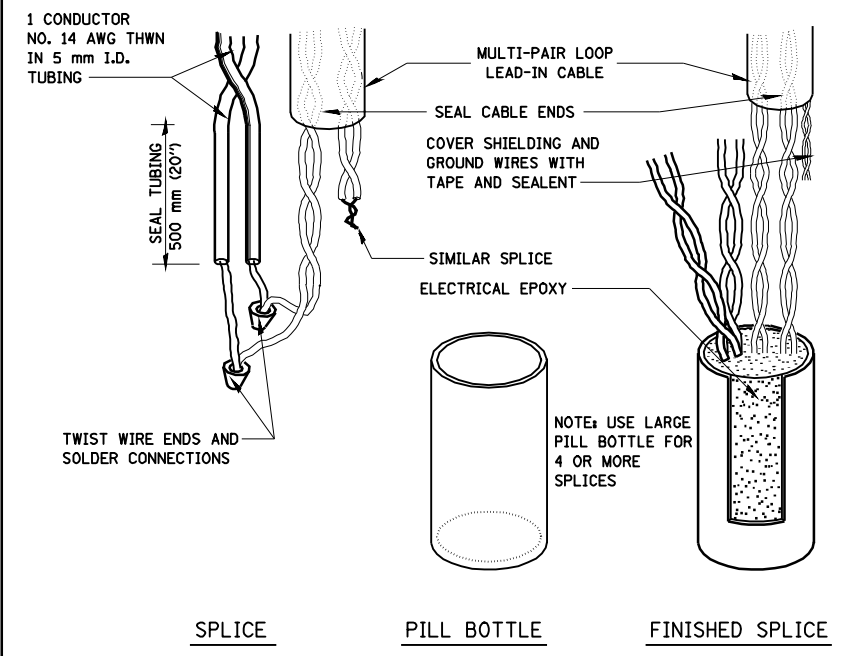
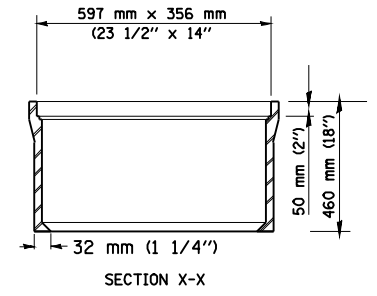


PAVEMENT SAWING DETAIL FOR TUBE ENCASED DETECTOR LOOP WIRE



MINIMUM DIMENSIONS

GULFBOX JUNCTION (SPECIAL)



BOTTLE SPLICE DETAIL

FILE NAME =	USER NAME = laughlinr1	DESIGNED - WDC	REVISED -
e:\pwwork\PIWIDOT\LAUGHLINRL\dna25724\0672845-ts_sheets.dgn		DRAWN - CAD	REVISED -
	PLOT SCALE = 48.0000 ' / IN.	CHECKED - WCD	REVISED -
	PLOT DATE = Apr-07-2010 11:38:41AM	DATE - 5/02/96	REVISED -

**STATE OF ILLINOIS
DEPARTMENT OF TRANSPORTATION**

TRAFFIC SIGNAL DETECTOR LOOP DETAILS

SCALE: SHEET NO. 3 OF 3 SHEETS STA. TO STA.

F.A.P. RTE.	SECTION	COUNTY	TOTAL SHEETS	SHEET NO.
757	(20X)RS-5; (21X)RS-3	PIKE	34	34
CONTRACT NO. 72B45				
FED. ROAD DIST. NO. ILLINOIS FED. AID PROJECT				

DETLOOP.DGN