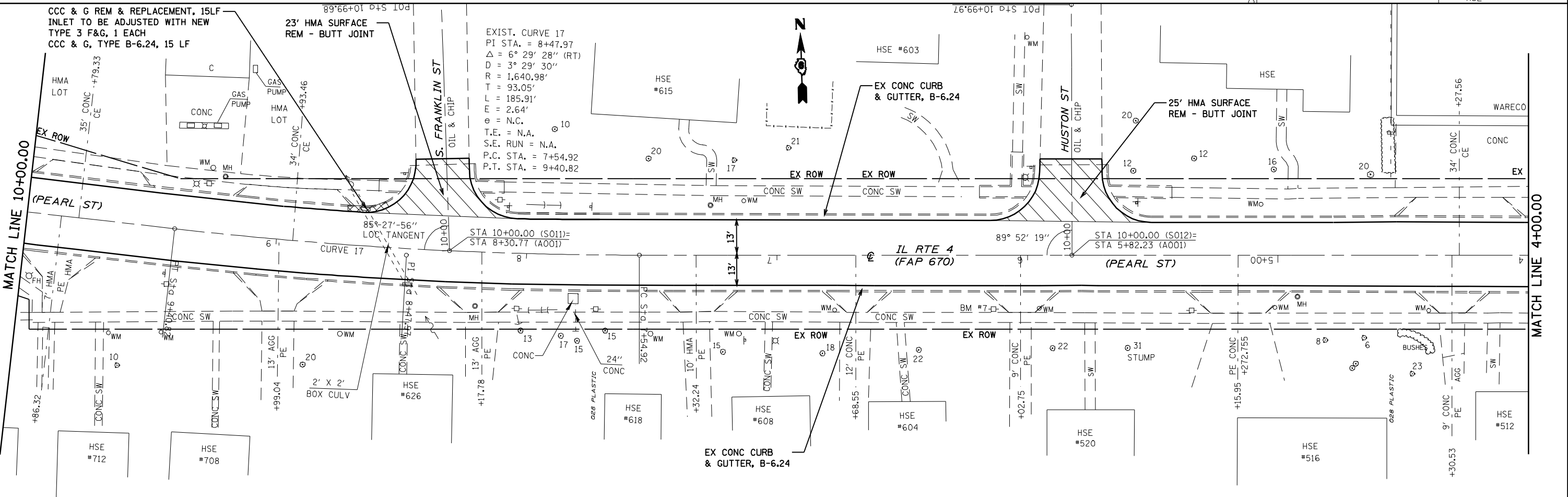


EXIST. CURVE 16
 PI STA. = 10+80.90
 $\Delta = 4^\circ 59' 18''$ (LT)
 $D = 3^\circ 22' 11''$
 $R = 1,700.32'$
 $T = 74.06'$
 $L = 148.03'$
 $E = 1.61'$
 $\phi =$ N.C.
 T.R. = N.A.
 S.E. RUN = N.A.
 P.C. STA. = 10+06.83
 P.T. STA. = 11+54.87



EXIST. CURVE 17
 PI STA. = 8+47.97
 $\Delta = 6^\circ 29' 28''$ (RT)
 $D = 3^\circ 29' 30''$
 $R = 1,640.98'$
 $T = 93.05'$
 $L = 185.91'$
 $E = 2.64'$
 $\phi =$ N.C.
 T.E. = N.A.
 S.E. RUN = N.A.
 P.C. STA. = 7+54.92
 P.T. STA. = 9+40.82

FILE NAME = c:\pwworkspace\p1\DOT\LAUGH\INR\071789\06720208-htr-plan.dgn

USER NAME = laughlrr1	DESIGNED -	REVISED -
PLOT SCALE = 40.0000' / IN.	DRAWN -	REVISED -
PLOT DATE = Apr-14-2010 07:57:07AM	CHECKED -	REVISED -
	DATE -	REVISED -

**STATE OF ILLINOIS
 DEPARTMENT OF TRANSPORTATION**

PLAN SHEETS

SCALE: 1"=20' SHEET NO. 8 OF 25 SHEETS STA. 16+00.00 TO STA. 4+00.00

F.A. RTE.	SECTION	COUNTY	TOTAL SHEETS	SHEET NO.
8139	(30,JRS-3)	MACOUPIN	45	17
CONTRACT NO. 72C18				
FED. ROAD DIST. NO. ILLINOIS FED. AID PROJECT				