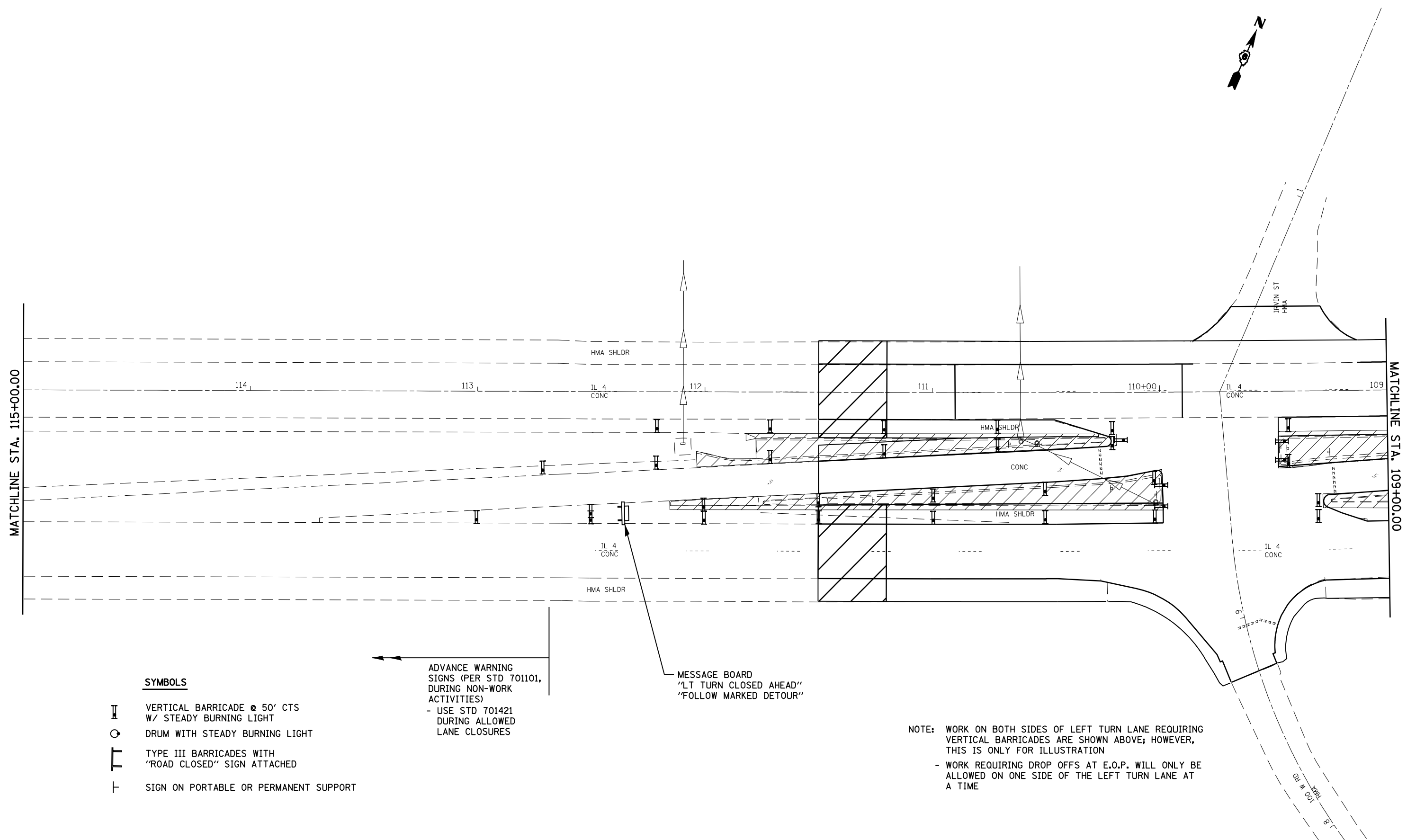




MATCHLINE STA. 115+00.00

MATCHLINE STA. 109+00.00



SYMBOLS

- ▬ VERTICAL BARRICADE @ 50' CTS
W/ STEADY BURNING LIGHT
- ⊙ DRUM WITH STEADY BURNING LIGHT
- ┌ TYPE III BARRICADES WITH
"ROAD CLOSED" SIGN ATTACHED
- └ SIGN ON PORTABLE OR PERMANENT SUPPORT

ADVANCE WARNING
SIGNS (PER STD 701101,
DURING NON-WORK
ACTIVITIES)
- USE STD 701421
DURING ALLOWED
LANE CLOSURES

MESSAGE BOARD
"LT TURN CLOSED AHEAD"
"FOLLOW MARKED DETOUR"

NOTE: WORK ON BOTH SIDES OF LEFT TURN LANE REQUIRING
VERTICAL BARRICADES ARE SHOWN ABOVE; HOWEVER,
THIS IS ONLY FOR ILLUSTRATION
- WORK REQUIRING DROP OFFS AT E.O.P. WILL ONLY BE
ALLOWED ON ONE SIDE OF THE LEFT TURN LANE AT
A TIME

FILE NAME =	USER NAME = laughlinr1	DESIGNED -	REVISED -	STATE OF ILLINOIS DEPARTMENT OF TRANSPORTATION	MANAGEMENT OF TRAFFIC IL 4 / VETERANS PKWY	F.A.P. RTE.	SECTION	COUNTY	TOTAL SHEETS	SHEET NO.	
et:\pw\work\PWIDOT\LAUGHLINRL\dms47710\0672C35-sht-staging-IL_4.dgn		DRAWN -	REVISED -			658	•	SANGAMON	206	167	
PLOT SCALE = 40.0000' / IN.		CHECKED -	REVISED -			SCALE:		SHEET NO. 4 OF 7 SHEETS		CONTRACT NO. 72C35	
PLOT DATE = Apr-30-2010 02:35:20PM		DATE -	REVISED -			STA. TO STA.		ILLINOIS FED. AID PROJECT			

• 1-1(RS,TS-1027RS-6)79Z&102RS-4