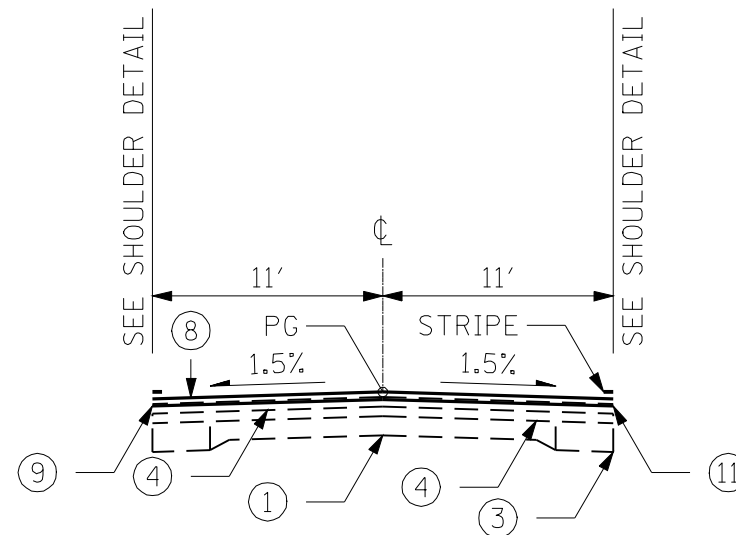


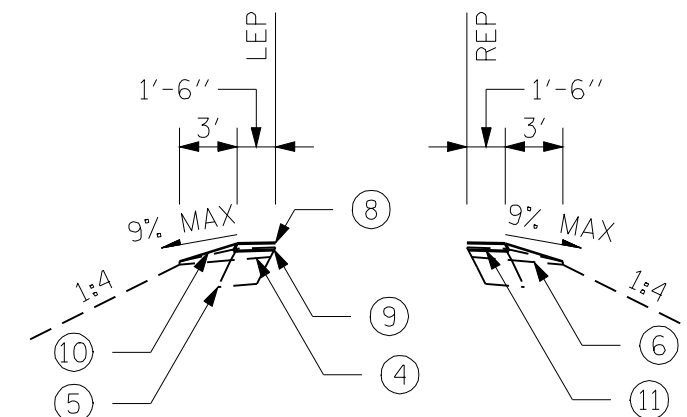
TYPICAL SECTION

STA. 16+21.44 TO STA. 28+20.67



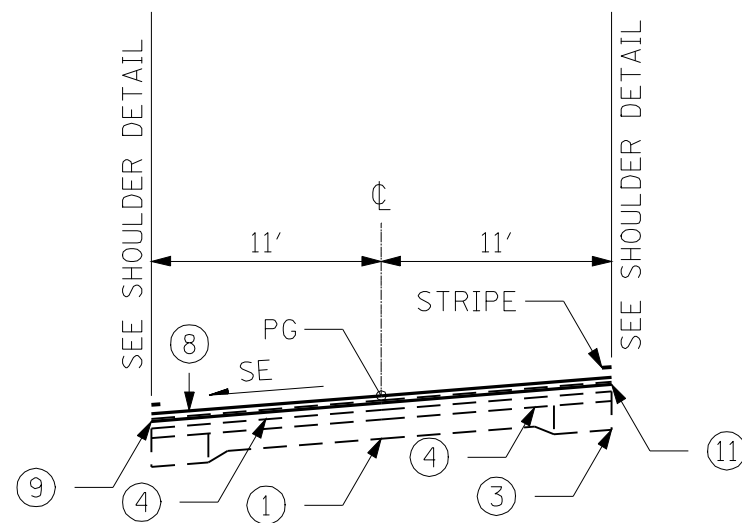
TYPICAL SECTION

STA. 29+41.67 TO STA. 57+01
 STA. 67+31 TO STA. 80+86
 STA. 90+75 TO STA. 98+01
 STA. 107+98 TO STA. 111+69
 STA. 126+15 TO STA. 130+56
 STA. 142+07 TO STA. 155+42
 STA. 167+03 TO STA. 174+68
 STA. 186+37 TO STA. 192+56
 STA. 206+31 TO STA. 227+88
 STA. 243+11 TO STA. 251+66
 STA. 271+01 TO STA. 295+72
 STA. 313+46 TO STA. 324+23
 STA. 342+31 TO STA. 382+80
 STA. 389+20 TO STA. 420+88
 STA. 430+63 TO STA. 448+23
 STA. 470+01 TO STA. 497+14
 STA. 505+70 TO STA. 532+00



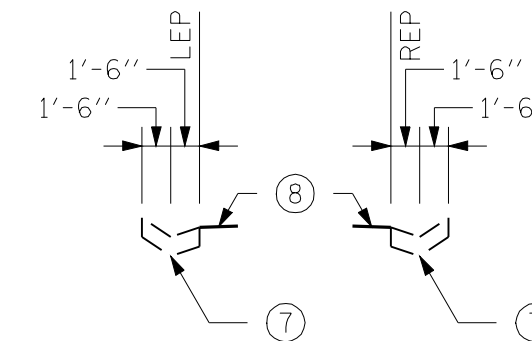
SHOULDER DETAIL

STA. 28+20.67 TO STA. 382+80
 STA. 389+20 TO STA. 532+00
 (SEE GUTTER DETAIL FOR GUTTER LOCATIONS)



TYPICAL SECTION

STA. 28+20.67 TO STA. 29+41.67
 STA. 57+01 TO STA. 67+31
 STA. 80+86 TO STA. 90+75
 STA. 98+01 TO STA. 107+98
 STA. 111+69 TO STA. 126+15
 STA. 130+56 TO STA. 142+07
 STA. 155+42 TO STA. 167+03
 STA. 174+68 TO STA. 186+37
 STA. 192+56 TO STA. 206+31
 STA. 227+88 TO STA. 243+11
 STA. 251+66 TO STA. 271+01
 STA. 295+72 TO STA. 313+46
 STA. 324+23 TO STA. 342+31
 STA. 420+88 TO STA. 430+63
 STA. 448+23 TO STA. 470+01
 STA. 497+14 TO STA. 505+70



GUTTER DETAIL

RT. STA. 313+00 TO RT. STA. 320+75
 LT. STA. 339+25 TO LT. STA. 342+50
 RT. STA. 339+75 TO RT. STA. 343+00
 RT. STA. 356+50 TO RT. STA. 362+00
 RT. STA. 374+25 TO RT. STA. 380+50
 LT. STA. 389+75 TO LT. STA. 396+50
 RT. STA. 401+75 TO RT. STA. 410+00
 LT. STA. 402+25 TO LT. STA. 409+50
 RT. STA. 418+25 TO RT. STA. 421+00
 LT. STA. 423+75 TO LT. STA. 432+50
 RT. STA. 424+00 TO RT. STA. 433+00
 LT. STA. 496+50 TO LT. STA. 506+00
 RT. STA. 498+00 TO RT. STA. 502+00

BRIDGE OMISSION

STA. 382+80 TO STA. 389+20

- ① EXIST. PCC PAVEMENT 9'-6"-9"
- ② EXIST. HMA PAVEMENT (FULL-DEPTH) 13 1/2"
- ③ EXIST. HMA BASE COURSE WIDENING 9"
- ④ EXIST. HMA RESURFACING 5"
- ⑤ EXIST. HMA SHOULDER 8"
- ⑥ EXIST. AGG. SHOULDER
- ⑦ EXIST. CONCRETE GUTTER, TYPE A
- ⑧ PROP. HMA SURFACE COURSE, MIX "C", N50 (1 1/2")
- ⑨ PROP. LEVELING BINDER (MACHINE METHOD), N50 (3/4")
- ⑩ PROP. AGG. SHOULDERS, TYPE B
- ⑪ PROP. HMA SURFACE REMOVAL, VARIABLE DEPTH OR 2 1/4"

FILE NAME =	USER NAME = laughlinr1	DESIGNED -	REVISED -	STATE OF ILLINOIS DEPARTMENT OF TRANSPORTATION	TYPICAL SECTIONS (ILLINOIS 107)			F.A.P. RTE.	SECTION	COUNTY	TOTAL SHEETS	SHEET NO.
er\pwwork\pwwid\LAUGHLINRL\0200040	672C37-shr-typical.dgn	DRAWN -	REVISED -					554	16(RS-6) & 18(RS-6)	BROWN	49	7
JD Johnson, Depp & Ouisenberry CONSULTING ENGINEERS Springfield, Illinois	PLOT SCALE = 1/8" = 1' / IN.	CHECKED -	REVISED -		SCALE: SHEET NO. OF SHEETS STA. TO STA.			CONTRACT NO. 72C37				
	PLOT DATE = Apr-08-2010 03:17:55PM	DATE -	REVISED -		FED. ROAD DIST. NO. ILLINOIS FED. AID PROJECT							