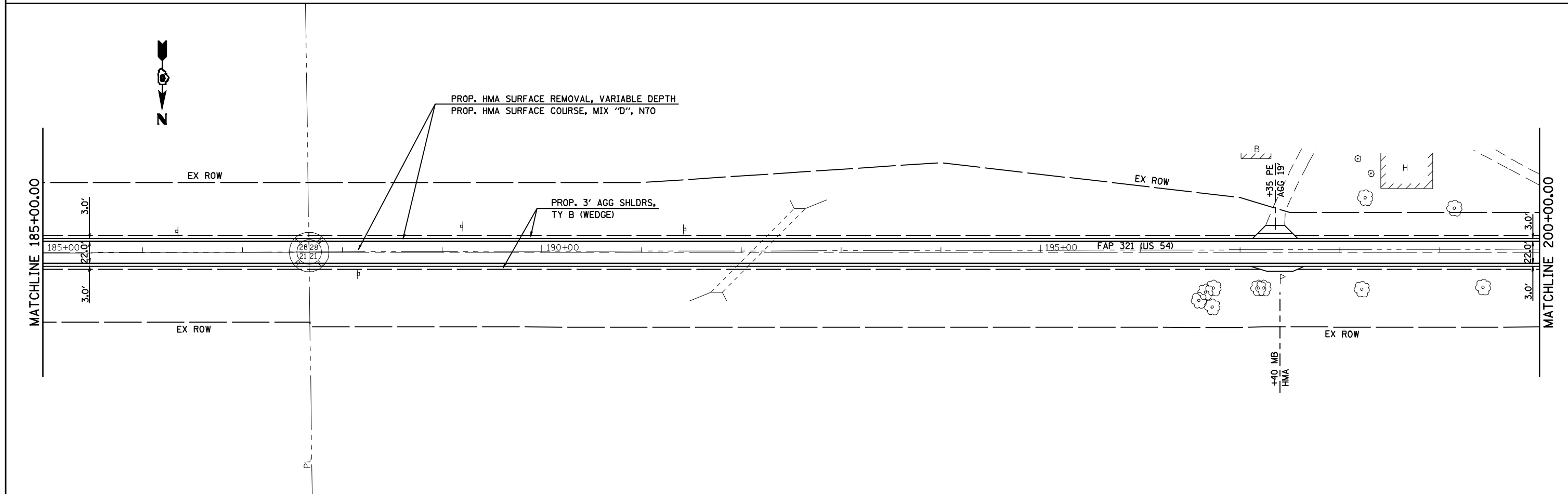


THE HMA SHOULDERS SHALL BE PAVED MONOLITHICALLY WITH THE HMA SURFACE COURSE WHERE SPECIFIED AS SURFACE MIX.

SEE ENTRANCE DETAIL AND SCHEDULES FOR ADDITIONAL INFORMATION



FILE NAME =	USER NAME = coxte	DESIGNED -	REVISED -
es:\pwwork\pwidot\COXTE\dms62291\0672043-shr-dblp1n-1.dgn		DRAWN -	REVISED -
		CHECKED -	REVISED -
		DATE -	REVISED -

**STATE OF ILLINOIS
DEPARTMENT OF TRANSPORTATION**

FAP 321 (US 54) PLAN SHEETS			
50 SCALE			
SCALE: 1" = 50'	SHEET NO.	OF SHEETS	STA. 170+00.00 TO STA. 200+00.00

F.A.P. RTE.	SECTION	COUNTY	TOTAL SHEETS	SHEET NO.
321	106RS-5, 18RS-11	PIKE	41	27
CONTRACT NO. 72C43				
ILLINOIS FED. AID PROJECT				