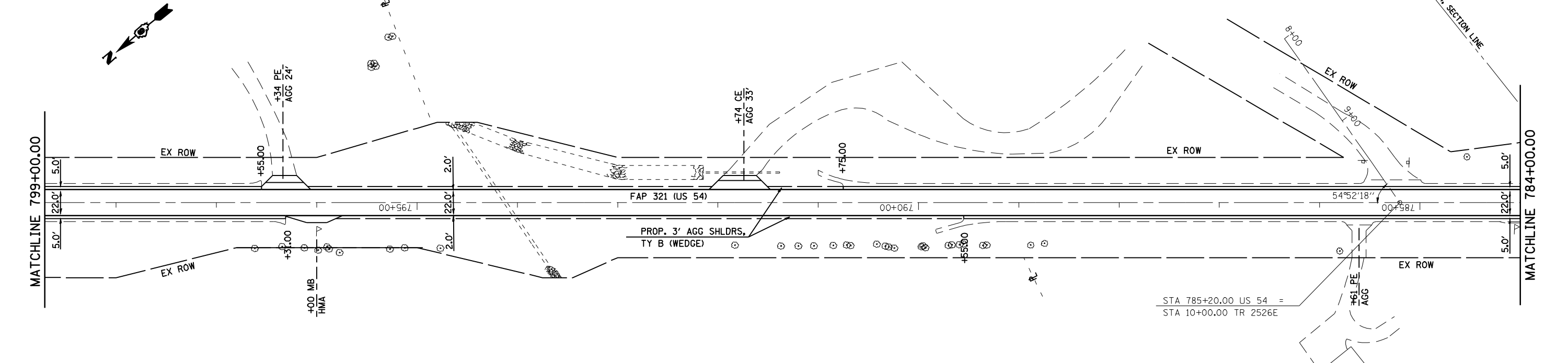


| PAVEMENT MARKING LEGEND | |
|-------------------------|--|
| ① | THERMOPLASTIC PAVEMENT MARKING - LINE 5" (SOLID WHITE LINE) |
| ② | THERMOPLASTIC PAVEMENT MARKING - LINE 5" (YELLOW SKIP DASH) |
| ③ | THERMOPLASTIC PAVEMENT MARKING - LINE 5" (SOLID YELLOW LINE) |
| ④ | THERMOPLASTIC PAVEMENT MARKING - LINE 5" (DOUBLE YELLOW) |
| ⑤ | PREF PLASTIC PAVE MARK, TY B - INLAID - LN 6" (2'x6'x6") (WHITE SKIP DASH) |
| ⑥ | THERMOPLASTIC PAVEMENT MARKING - LINE 8" (SOLID WHITE LINE) |

| PAVEMENT MARKING LEGEND | |
|-------------------------|--|
| ⑦ | THERMOPLASTIC PAVEMENT MARKING - LINE 12" (SOLID WHITE LINE) |
| ⑧ | THERMOPLASTIC PAVEMENT MARKING - LINE 12" (SOLID YELLOW LINE) |
| ⑨ | PREFORMED PLASTIC PAVEMENT MARKING, TYPE B - INLAID - LINE 6" (SOLID WHITE LINE) |
| ⑩ | PREFORMED PLASTIC PAVEMENT MARKING, TYPE B - INLAID - LINE 12" (SOLID WHITE LINE) |
| ⑪ | PREFORMED PLASTIC PAVEMENT MARKING, TYPE B - INLAID - LINE 24" (WHITE STOP BARS) |
| ⑫ | PREFORMED PLASTIC PAVEMENT MARKING, TYPE B - INLAID - LETTERS AND SYMBOLS (WHITE ARROWS) |

| RAISED REFLECTIVE PAVEMENT MARKER | |
|-----------------------------------|------------------------|
| - | ONE-WAY AMBER MARKER |
| - | ONE-WAY CRYSTAL MARKER |
| - | TWO-WAY MARKER |



THE HMA SHOULDERS SHALL BE PAVED MONOLITHICALLY WITH THE HMA SURFACE COURSE WHERE SPECIFIED AS SURFACE MIX.

SEE ENTRANCE DETAIL AND SCHEDULES FOR ADDITIONAL INFORMATION

| | | | | | | | | | | | | |
|---|-------------------|------------|-----------|---|---|------------------|-----------|----------------------------------|---------------------------|--------------------|--------------|-----------|
| FILE NAME = | USER NAME = coxte | DESIGNED - | REVISED - | STATE OF ILLINOIS DEPARTMENT OF TRANSPORTATION | FAP 321 (US 54) PLAN SHEETS 50 SCALE | | | F.A.P. RTE. = | SECTION | COUNTY | TOTAL SHEETS | SHEET NO. |
| es:\pwork\PWIDOT\COXTE\dms62291\067203-3-shr-dblp1n-1.dgn | | DRAWN - | REVISED - | | 321 | 106RS-5, 18RS-11 | PIKE | 41 | 29 | CONTRACT NO. 72C43 | | |
| PLOT SCALE = 100.0000' / IN. | | CHECKED - | REVISED - | | SCALE: 1" = 50' | SHEET NO. | OF SHEETS | STA. 215+00.00 TO STA. 784+00.00 | ILLINOIS FED. AID PROJECT | | | |
| PLOT DATE = Mar-11-2010 09:51:39AM | | DATE - | REVISED - | | | | | | | | | |