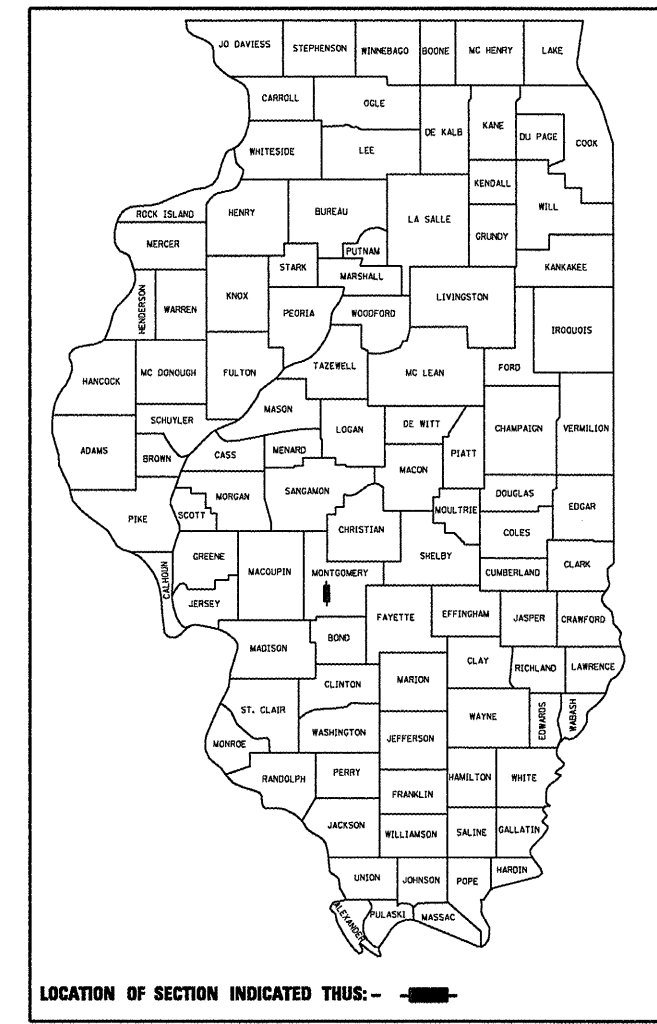


F.A.P. RTE.	SECTION	COUNTY	TOTAL SHEETS	SHEET NO.
**	*	MONTGOMERY	60	1
		ILLINOIS	CONTRACT NO. 72C52	

\*-20RS-7, 21RS-6, 104RS, 105RS-4  
 \*\*-42, 325

D-96-031-09



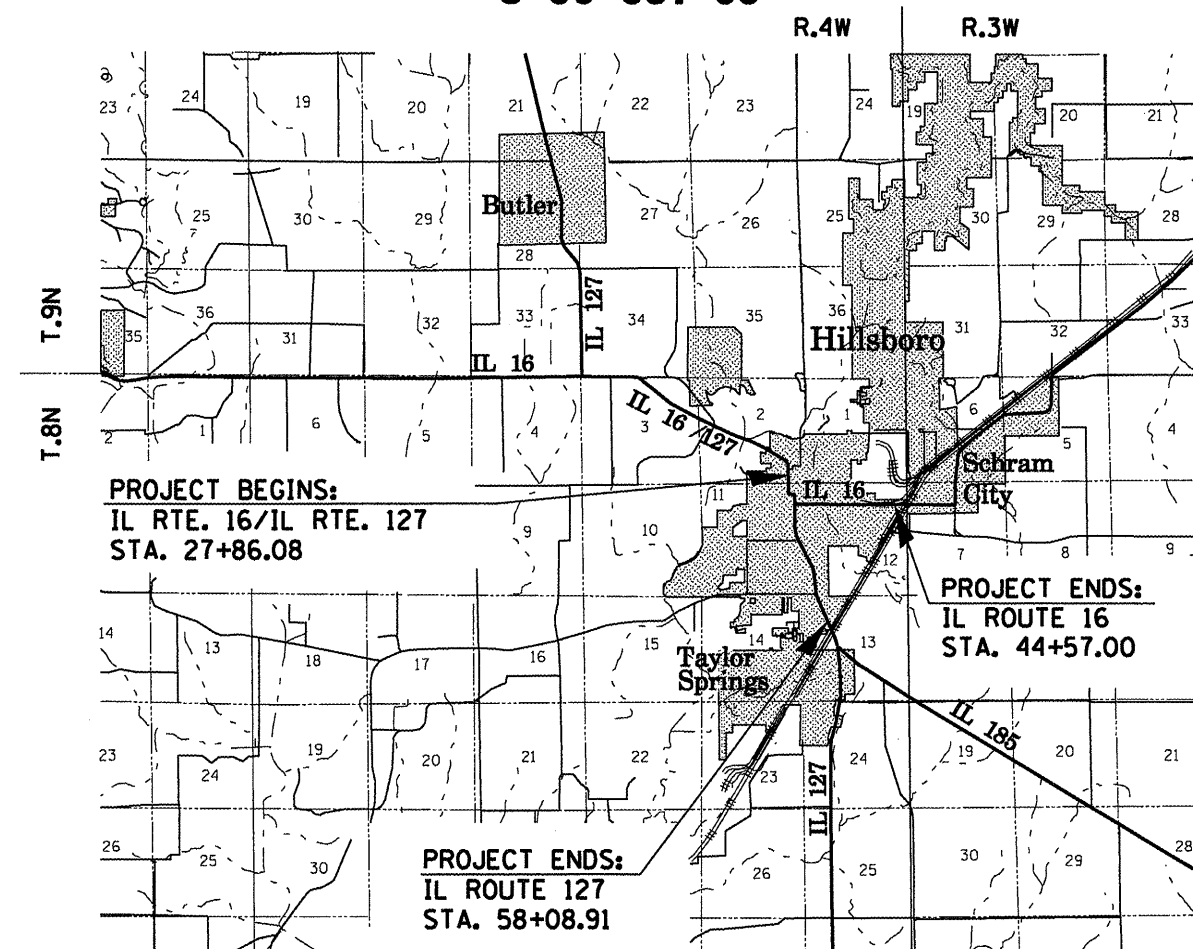
LOCATION OF SECTION INDICATED THUS: - [shaded box] -

STATE OF ILLINOIS  
 DEPARTMENT OF TRANSPORTATION  
 DIVISION OF HIGHWAYS

**PROPOSED  
 HIGHWAY PLANS**

**IL ROUTE 16 (FAP 325) & IL 127 (FAP 42)  
 SECTION 20RS-7, 21RS-6, 104RS, 105RS-4**

**PPP BITUMINOUS RESURFACING FOR IL 16 & IL 127  
 MONTGOMERY COUNTY  
 C-96-031-09**



PROJECT BEGINS:  
 IL RTE. 16/IL RTE. 127  
 STA. 27+86.08

PROJECT ENDS:  
 IL ROUTE 16  
 STA. 44+57.00

PROJECT ENDS:  
 IL ROUTE 127  
 STA. 58+08.91

**LOCATION MAP**

GROSS LENGTH = 12,274.46 FT. = 2.325 MILES  
 NET LENGTH = 12,274.46 FT. = 2.325 MILES

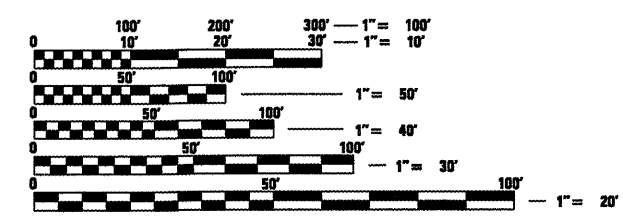
**INDEX OF SHEETS**

- 1 COVER SHEET
- 2 GENERAL NOTES
- 3-5 SUMMARY OF QUANTITIES
- 6-13 TYPICAL CROSS SECTIONS
- 14-21 SCHEDULE OF QUANTITIES
- 22-36 PLAN SHEETS
- 37-51 PAVEMENT MARKING SHEETS
- 52 BUTT-JOINT, ENTRANCE DETAILS
- 53 IMPACT ATTENUATOR PAD DETAILS
- 54 SIDEWALK DETAILS
- 55 PIPE HANDRAIL DETAILS
- 56-60 TRAFFIC DETECTOR LOOP DETAILS

**STANDARDS**

000001-05	701201-03
001001-02	701301.03
001006	701311-03
420701-02	701501-05
442001-04	701502-03
442101-07	701801-04
442201-03	701901-01
604006-04	780001-02
	781001-03

**AVERAGE DAILY TRAFFIC (2009)**  
 IL 16/127 (WOOD ST. - SCHOOL ST.) = 13,200 (600 TRUCK)  
 IL 16 (SCHOOL ST.) = 6,600 (300 TRUCK)  
 IL 127 (SCHOOL ST. - UP R.R.) = 10,500 (500 TRUCK)



FULL SIZE PLANS HAVE BEEN PREPARED USING STANDARD ENGINEERING SCALES. REDUCED SIZED PLANS WILL NOT CONFORM TO STANDARD SCALES. IN MAKING MEASUREMENTS ON REDUCED PLANS, THE ABOVE SCALES MAY BE USED.

J.U.L.I.E.  
 JOINT UTILITY LOCATION INFORMATION FOR EXCAVATION  
 1-800-892-0123  
 OR 811

PROJECT ENGINEER: SAL MADONIA (217) 782-4762  
 TEAM MEMBER: TIM SLAGLE (217) 524-0946

**CONTRACT NO. 72C52**

STATE OF ILLINOIS  
 DEPARTMENT OF TRANSPORTATION  
 DIVISION OF HIGHWAYS

SUBMITTED March 30 2010  
Reg Z Omb  
 DEPUTY DIRECTOR OF HIGHWAYS, REGION ENGINEER

May 7 2010  
Scott E. Stitt P.E. Jr  
 acting ENGINEER OF DESIGN AND ENVIRONMENT

May 7 2010  
Christine M. Reed Jr  
 DIRECTOR OF HIGHWAYS, CHIEF ENGINEER

**PRINTED BY THE AUTHORITY  
 OF THE STATE OF ILLINOIS**