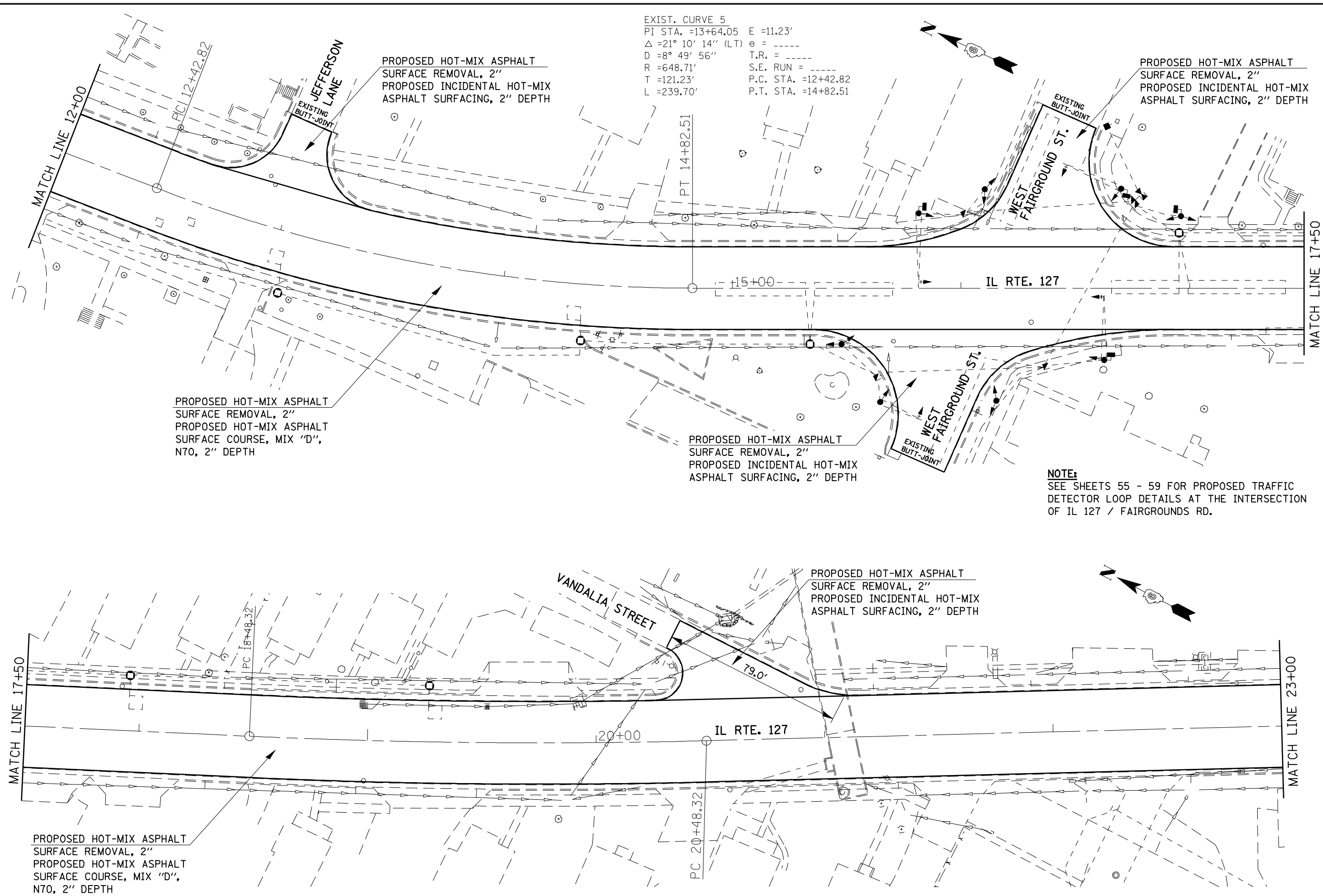
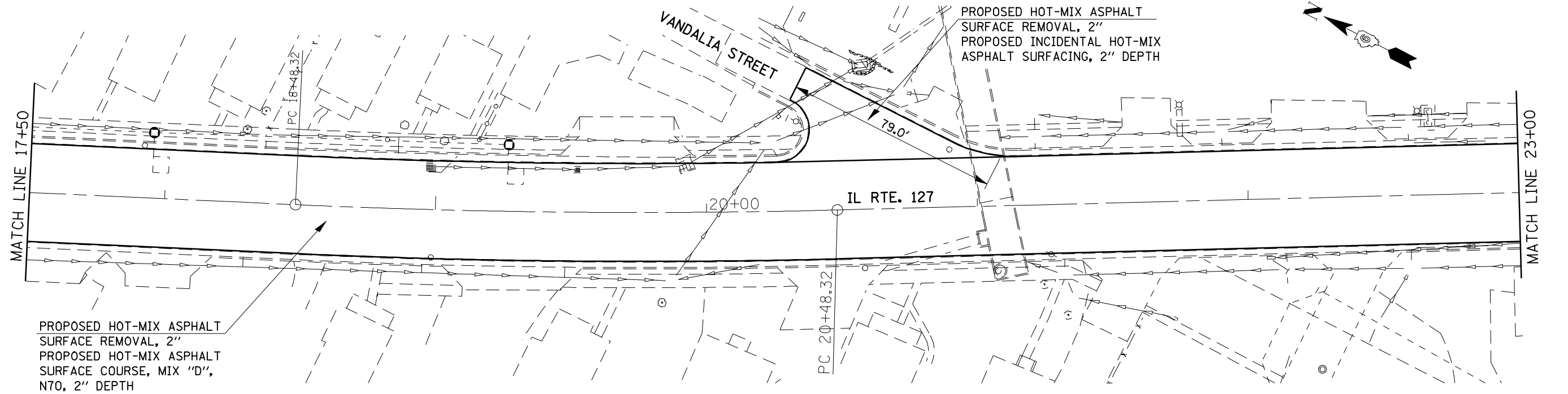


EXIST. CURVE 5
 PI STA. =13+64.05 E =11.23'
 Δ =21° 10' 14" (LT) e = ----
 D =8° 49' 56" T.R. = ----
 R =648.71' S.E. RUN = ----
 T =121.23' P.C. STA. =12+42.82
 L =239.70' P.T. STA. =14+82.51



NOTE:
 SEE SHEETS 55 - 59 FOR PROPOSED TRAFFIC
 DETECTOR LOOP DETAILS AT THE INTERSECTION
 OF IL 127 / FAIRGROUNDS RD.



•-20RS-7, 21RS-6, 104RS, 105RS-4
 •-325, 24

FILE NAME = e:\pwork\pwork\LAUGHLINRL\0105356\072C52-ahp-plan.dgn	USER NAME = laughlinr1	DESIGNED - RTS	REVISED -	STATE OF ILLINOIS DEPARTMENT OF TRANSPORTATION	PLAN SHEET		F.A.P. RTE.	SECTION	COUNTY	TOTAL SHEETS	SHEET NO.
PLOT SCALE = 40.0000' / IN.	CHECKED - RTS	DRAWN - RTS	REVISED -		SCALE:	SHEET NO. 11 OF 15 SHEETS	STA.	TO STA.	MONTGOMERY	60	32
PLOT DATE = Mar-26-2010 11:59:51AM	DATE - 3-10-10	CHECKED - RTS	REVISED -						CONTRACT NO. 72C52		
									ILLINOIS FED. AID PROJECT		