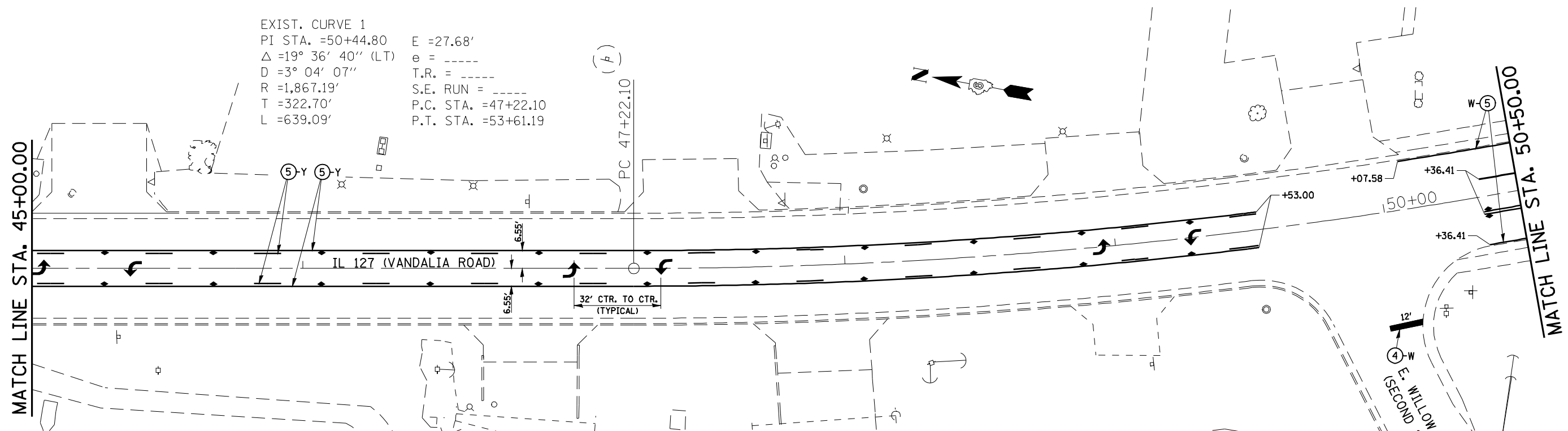


EXIST. CURVE 1  
 PI STA. =50+44.80 E =27.68'  
 $\Delta = 19^\circ 36' 40''$  (LT) e = -----  
 D =3' 04' 07" T.R. = -----  
 R =1,867.19' S.E. RUN = -----  
 T =322.70' P.C. STA. =47+22.10  
 L =639.09' P.T. STA. =53+61.19

MATCH LINE STA. 45+00.00

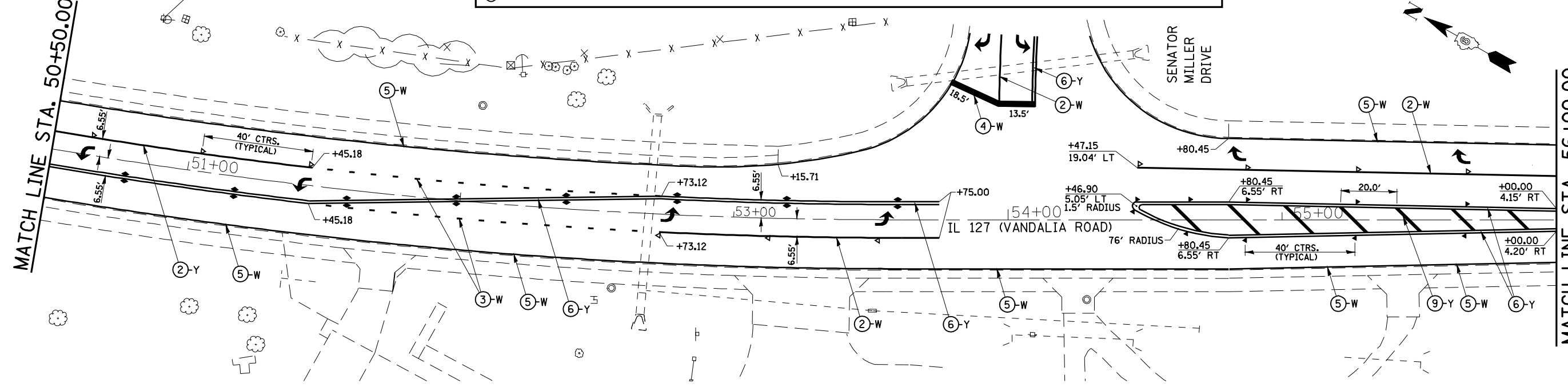


MATCH LINE STA. 50+50.00

**PAVEMENT MARKING LEGEND**

① PREFORMED PLASTIC PAVEMENT MARKING, TYPE B, INLAID - LINE 5"	↩ PREFORMED PLASTIC PAVEMENT MARKING, TYPE B, INLAID - LETTERS AND SYMBOLS (WHITE)
② PREFORMED PLASTIC PAVEMENT MARKING, TYPE B, INLAID - LINE 6"	▶ RAISED REFLECTIVE PAVEMENT MARKER (ONE-WAY CRYSTAL)
③ PREFORMED PLASTIC PAVEMENT MARKING, TYPE B, INLAID - LINE 6" (6' SKIP- 2' DASH)	▶ RAISED REFLECTIVE PAVEMENT MARKER (ONE-WAY AMBER)
④ PREFORMED PLASTIC PAVEMENT MARKING, TYPE B, INLAID - LINE 24"	▶ RAISED REFLECTIVE PAVEMENT MARKER (TWO-WAY AMBER)
⑤ THERMOPLASTIC PAVEMENT MARKING - LINE 5"	⊗-W PAVEMENT MARKING, WHITE
⑥ THERMOPLASTIC PAVEMENT MARKING - LINE 5" (DOUBLE YELLOW LINES @ 13" CENTERS)	⊗-Y PAVEMENT MARKING, YELLOW
⑦ THERMOPLASTIC PAVEMENT MARKING - LINE 6"	
⑧ THERMOPLASTIC PAVEMENT MARKING - LINE 8"	
⑨ THERMOPLASTIC PAVEMENT MARKING - LINE 12"	
⑩ PAINT PAVEMENT MARKING - LINE 5"	

MATCH LINE STA. 50+50.00



MATCH LINE STA. 56+00.00

•-20RS-7, 21RS-6, 104RS, 105RS-4  
 •-325, 42