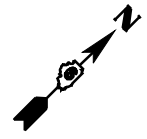
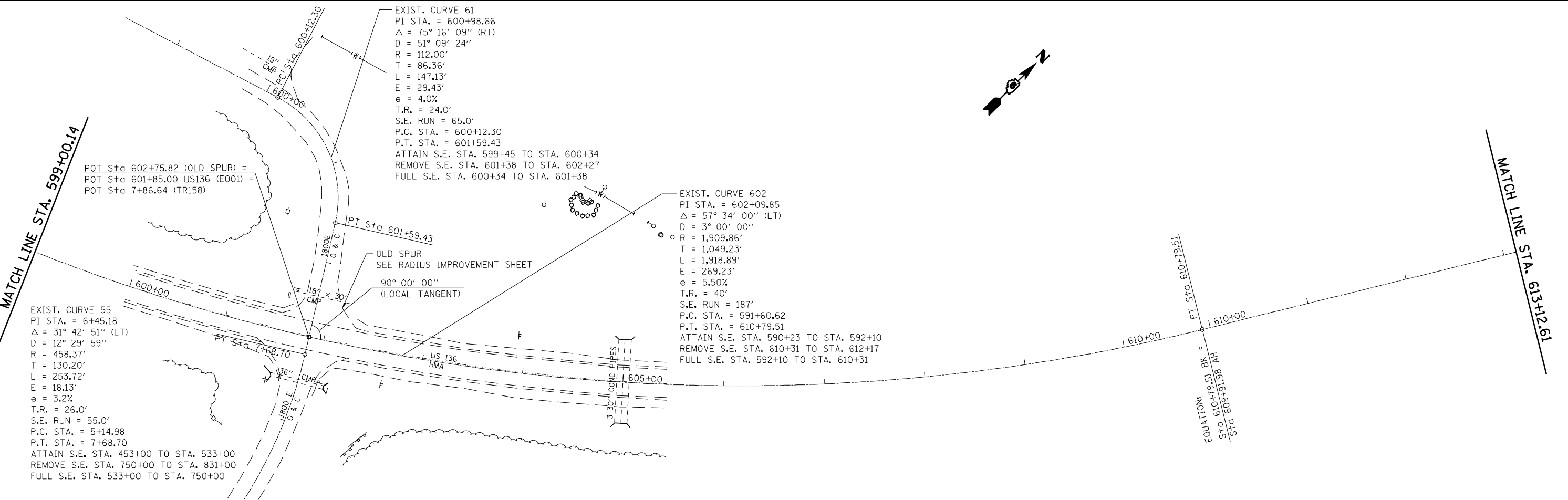


EXIST. CURVE 584  
 PI STA. = 584+93.40  
 $\Delta = 16^\circ 00' 00''$  (RT)  
 $D = 3^\circ 00' 00''$   
 $R = 1,909.84'$   
 $T = 268.41'$   
 $L = 533.33'$   
 $E = 18.77'$   
 $e = 5.5\%$   
 $T.R. = 40'$   
 $S.E. RUN = 187'$   
 $P.C. STA. = 582+24.99$   
 $P.T. STA. = 587+58.31$   
 ATTAIN S.E. STA. 580+87 TO STA. 582+74  
 REMOVE S.E. STA. 587+09 TO STA. 588+96  
 FULL S.E. STA. 582+74 TO STA. 587+09

EXIST. CURVE 62  
 PI STA. = 589+20.99  
 $\Delta = 73^\circ 23' 00''$  (RT)  
 $D = 92^\circ 24' 40''$   
 $R = 62.00'$   
 $T = 46.20'$   
 $L = 79.41'$   
 $E = 15.32'$   
 $e = 4.0\%$   
 $T.R. = 24.30'$   
 $S.E. RUN = 65.0'$   
 $P.C. STA. = 588+74.79$   
 $P.T. STA. = 589+54.20$   
 ATTAIN S.E. STA. 587+69 TO STA. 589+19  
 REMOVE S.E. STA. 589+14 TO STA. 590+60  
 FULL S.E. STA. 589+15 TO STA. 589+14

MATCH LINE STA. 584+00.14

MATCH LINE STA. 599+00.14



MATCH LINE STA. 599+00.14

MATCH LINE STA. 613+12.61

EXIST. CURVE 55  
 PI STA. = 6+45.18  
 $\Delta = 31^\circ 42' 51''$  (LT)  
 $D = 12^\circ 29' 59''$   
 $R = 458.37'$   
 $T = 130.20'$   
 $L = 253.72'$   
 $E = 18.13'$   
 $e = 3.2\%$   
 $T.R. = 26.0'$   
 $S.E. RUN = 55.0'$   
 $P.C. STA. = 5+14.98$   
 $P.T. STA. = 7+68.70$   
 ATTAIN S.E. STA. 453+00 TO STA. 533+00  
 REMOVE S.E. STA. 750+00 TO STA. 831+00  
 FULL S.E. STA. 533+00 TO STA. 750+00

EXIST. CURVE 61  
 PI STA. = 600+98.66  
 $\Delta = 75^\circ 16' 09''$  (RT)  
 $D = 51^\circ 09' 24''$   
 $R = 112.00'$   
 $T = 86.36'$   
 $L = 147.13'$   
 $E = 29.43'$   
 $e = 4.0\%$   
 $T.R. = 24.0'$   
 $S.E. RUN = 65.0'$   
 $P.C. STA. = 600+12.30$   
 $P.T. STA. = 601+59.43$   
 ATTAIN S.E. STA. 599+45 TO STA. 600+34  
 REMOVE S.E. STA. 601+38 TO STA. 602+27  
 FULL S.E. STA. 600+34 TO STA. 601+38

EXIST. CURVE 602  
 PI STA. = 602+09.85  
 $\Delta = 57^\circ 34' 00''$  (LT)  
 $D = 3^\circ 00' 00''$   
 $R = 1,909.86'$   
 $T = 1,049.23'$   
 $L = 1,918.89'$   
 $E = 269.23'$   
 $e = 5.50\%$   
 $T.R. = 40'$   
 $S.E. RUN = 187'$   
 $P.C. STA. = 591+60.62$   
 $P.T. STA. = 610+79.51$   
 ATTAIN S.E. STA. 590+23 TO STA. 592+10  
 REMOVE S.E. STA. 610+31 TO STA. 612+17  
 FULL S.E. STA. 592+10 TO STA. 610+31

FILE NAME =	USER NAME = laughlinr1	DESIGNED -	REVISED -
es:\pwork\p\WDOT\LAUGHLINRL\0159674\0672C63-ah-t-alignment50.dgn		DRAWN -	REVISED -
	PLOT SCALE = 100.0000' / IN.	CHECKED -	REVISED -
	PLOT DATE = Apr-07-2010 08:39:25AM	DATE -	REVISED -

STATE OF ILLINOIS  
 DEPARTMENT OF TRANSPORTATION

US 136

SCALE: SHEET NO. OF SHEETS STA. TO STA.

F.A.P. RTE.	SECTION	COUNTY	TOTAL SHEETS	SHEET NO.
315	(28,29)RS-5	HANCOCK	40	31
CONTRACT NO. 72C63			ILLINOIS FED. AID PROJECT	