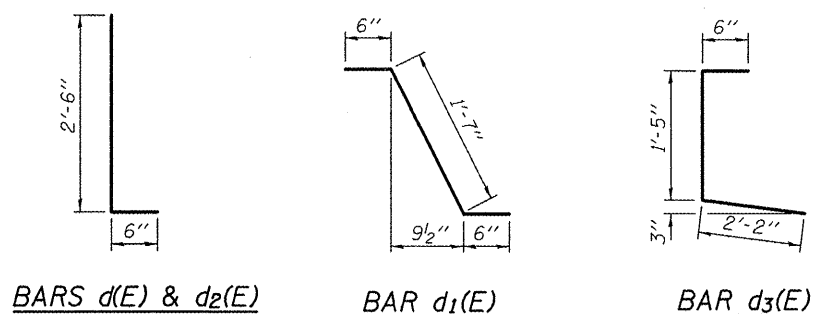
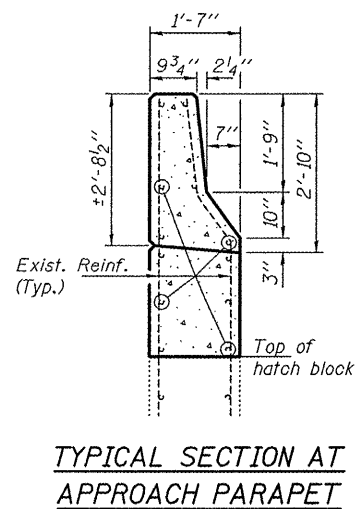
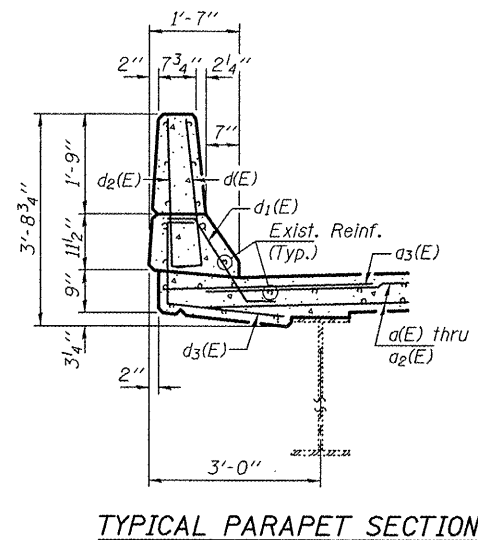
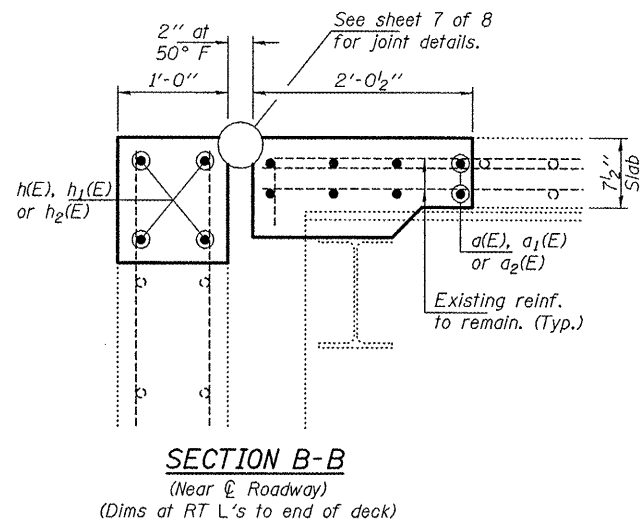
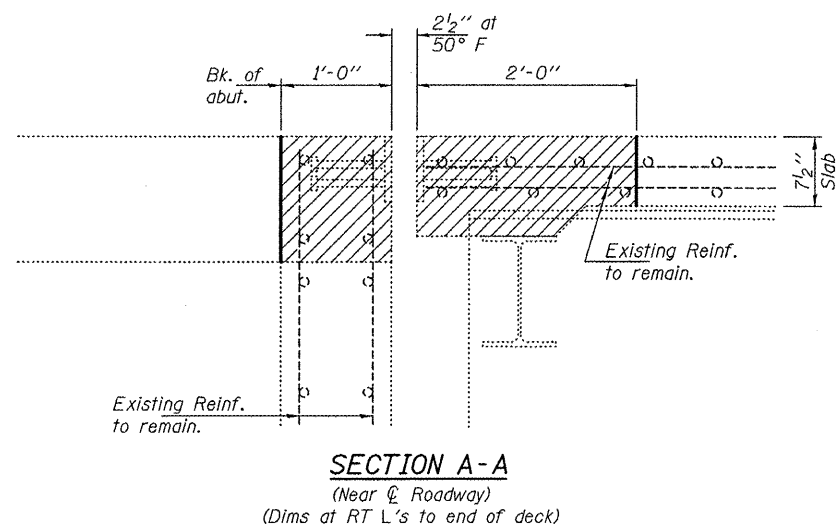


STATE OF ILLINOIS
DEPARTMENT OF TRANSPORTATION



Min. Bar Laps
#5 = 3'-3"
#6 = 3'-10"

BILL OF MATERIAL

Bar	No.	Size	Length	Shape
d(E)	32	#5	27'-2"	—
a ₁ (E)	64	#5	28'-10"	—
a ₂ (E)	32	#5	21'-7"	—
a ₃ (E)	32	#6	6'-0"	—
d(E)	24	#5	3'-0"	L
d ₁ (E)	24	#5	2'-7"	L
d ₂ (E)	24	#4	3'-0"	L
d ₃ (E)	24	#4	4'-1"	L
h(E)	16	#6	28'-2"	—
h ₁ (E)	32	#6	29'-11"	—
h ₂ (E)	16	#6	22'-8"	—
Concrete Removal			Cu. Yd.	60.0
Concrete Superstructure			Cu. Yd.	60.8
Reinforcement Bars, Epoxy Coated			Pound	6750

Bars indicated thus 4 x 2-#5 etc. indicates 4 lines of bars with 2 lengths per line.

DESIGNED	IJL
CHECKED	ATH
DRAWN	Kyle M. Steffen
CHECKED	IJL ATH

MAY 7, 2010
EXAMINED *A. Carl Poyser*
ENGINEER OF STRUCTURAL SERVICES
PASSED *Ralph E. Anderson*
ENGINEER OF BRIDGES AND STRUCTURES

REPAIR DETAILS
SN 084-0016 (S.B.) & 0017 (N.B.)

SHEET NO. 6 8 SHEETS	F.A.I. RTE.	SECTION	COUNTY	TOTAL SHEETS	SHEET NO.
	55	84-2(RS-3)	SANGAMON	156	124
FED. ROAD DIST. NO.			ILLINOIS FED. AID PROJECT		
			CONTRACT NO. 72D43		

Rev. 5-26-10