

STATE OF ILLINOIS
DEPARTMENT OF TRANSPORTATION
DIVISION OF HIGHWAYS

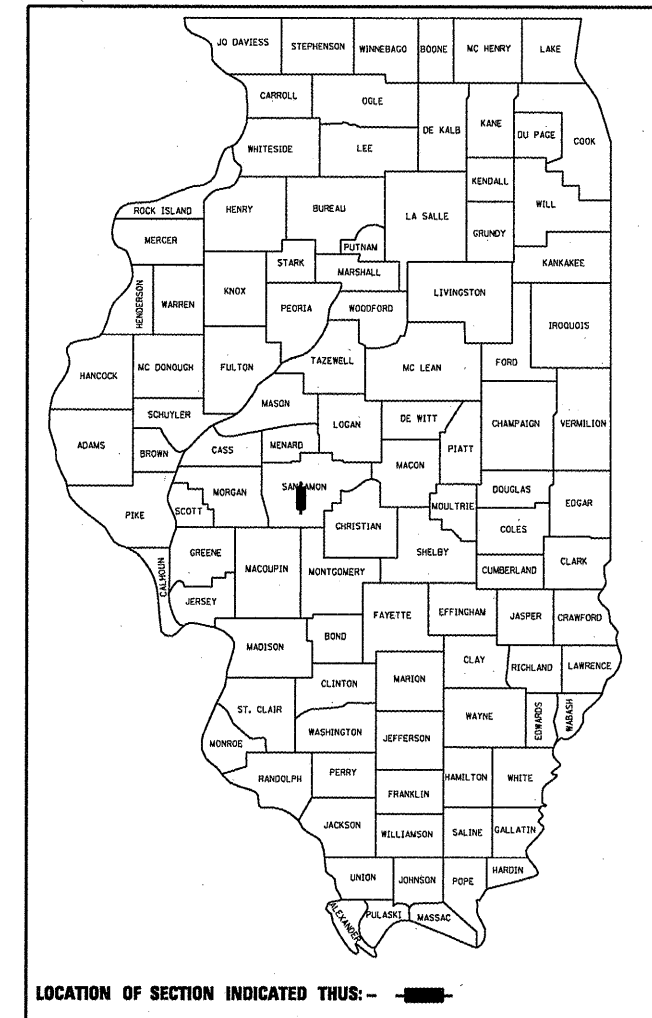
**PROPOSED
HIGHWAY PLANS**

F.A.P. ROUTE 662 (IL 4)
SECTION 3 I-10
PROJECT HSIP-0662(064)
PIER PROTECTION
SANGAMON COUNTY

C-96-179-10

F.A.P. RTE.	SECTION	COUNTY	TOTAL SHEETS	SHEET NO.
662	3 I-10	SANGAMON	5	1
		ILLINOIS	CONTRACT NO. 72D48	

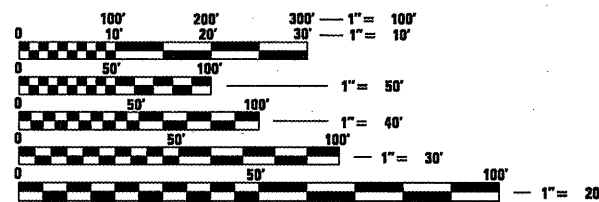
D-96-179-10



FOR INDEX OF SHEETS, SEE SHEET NO. 2

IDOT HIGHWAY STANDARDS

000001-05	630001-08	630301-05
631011-06	635006-03	635011-02
701101-02	701106-02	701901-01



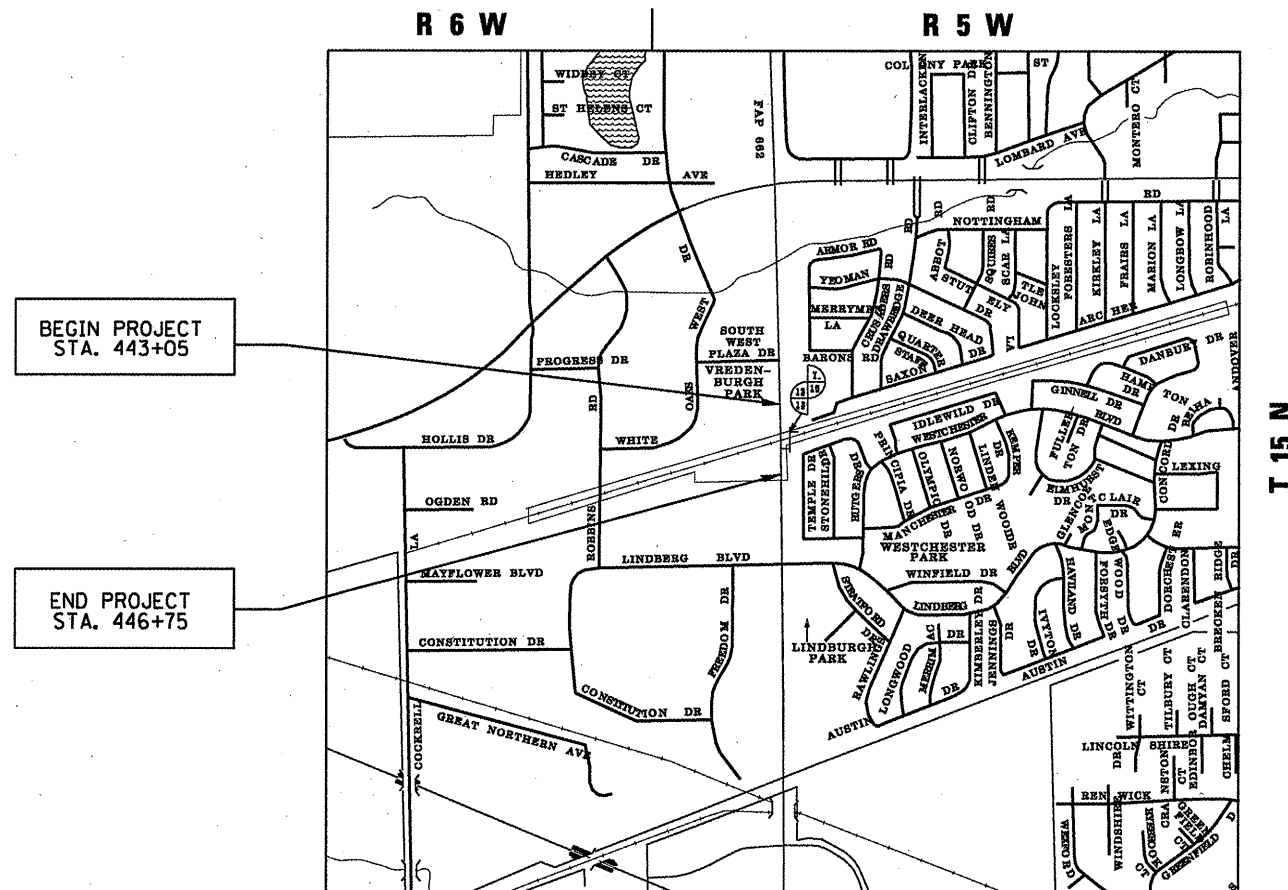
FULL SIZE PLANS HAVE BEEN PREPARED USING STANDARD ENGINEERING SCALES. REDUCED SIZED PLANS WILL NOT CONFORM TO STANDARD SCALES. IN MAKING MEASUREMENTS ON REDUCED PLANS, THE ABOVE SCALES MAY BE USED.

J.U.L.I.E.
JOINT UTILITY LOCATION INFORMATION FOR EXCAVATION
1-800-892-0123
OR 811

PROJECT ENGINEER: JOHN NEGANGARD (217) 782-6990
PROJECT MANAGER: MARK DUST (217) 785-0597

CONTRACT NO. 72D48

GROSS LENGTH = 369.40 FT. = 0.070 MILE
NET LENGTH = 369.40 FT. = 0.070 MILE
ADT = 30700 (2007)



BEGIN PROJECT
STA. 443+05

END PROJECT
STA. 446+75



T 15 N

STATE OF ILLINOIS
DEPARTMENT OF TRANSPORTATION
DIVISION OF HIGHWAYS

SUBMITTED MARCH 25 20 10
Page 2
DEPUTY DIRECTOR OF HIGHWAYS, REGION ENGINEER

May 7 20 10
Scott E. Stitt, P.E.
ENGINEER OF DESIGN AND ENVIRONMENT

May 7 20 10
Christine M. Reed, P.E.
DIRECTOR OF HIGHWAYS, CHIEF ENGINEER

**PRINTED BY THE AUTHORITY
OF THE STATE OF ILLINOIS**

GENERAL NOTES

1. ANY REFERENCE TO THE STANDARDS THROUGH OUT THE PLANS SHALL BE INTERPRETED TO BE THE LATEST STANDARDS OF THE DEPARTMENT AS INCLUDED IN THE PLANS.
2. EXISTING TRAFFIC SIGNAL FIBER OPTIC CABLE IS PRESENT WITHIN THE LIMITS OF THIS PROJECT, THE CONTRACTOR IS RESPONSIBLE FOR CONTACTING J.U.L.I.E. A MINIMUM OF 48 HOURS PRIOR TO COMMENCING WORK TO HAVE THIS CABLE LOCATED. 1-800-892-0123
3. THE CONTRACTOR WILL BE REQUIRED TO CONTACT THE OPERATIONS ENGINEER (217) 782-7314 AT LEAST 72 HOURS PRIOR TO DRIVING ANY POSTS.
4. THE CONTRACTOR WILL BE REQUIRED TO REPAIR ANY AREAS OF TURF THAT ARE DAMAGED DURING THE EXECUTION OF THIS CONTRACT.
5. ALL GUARDRAIL SHALL HAVE A PRELIMINARY LAYOUT. GUARDRAIL POSTS SHALL BE ADJUSTED SO AS TO MISS ANY SHOULDER DRAINS, INLETS, PIPE CULVERTS, STORM SEWER, FIBER OPTIC INTERCONNECT CABLE OR ANY OTHER HAZARD THAT MAY INTERFERE WITH GUARDRAIL CONSTRUCTION.

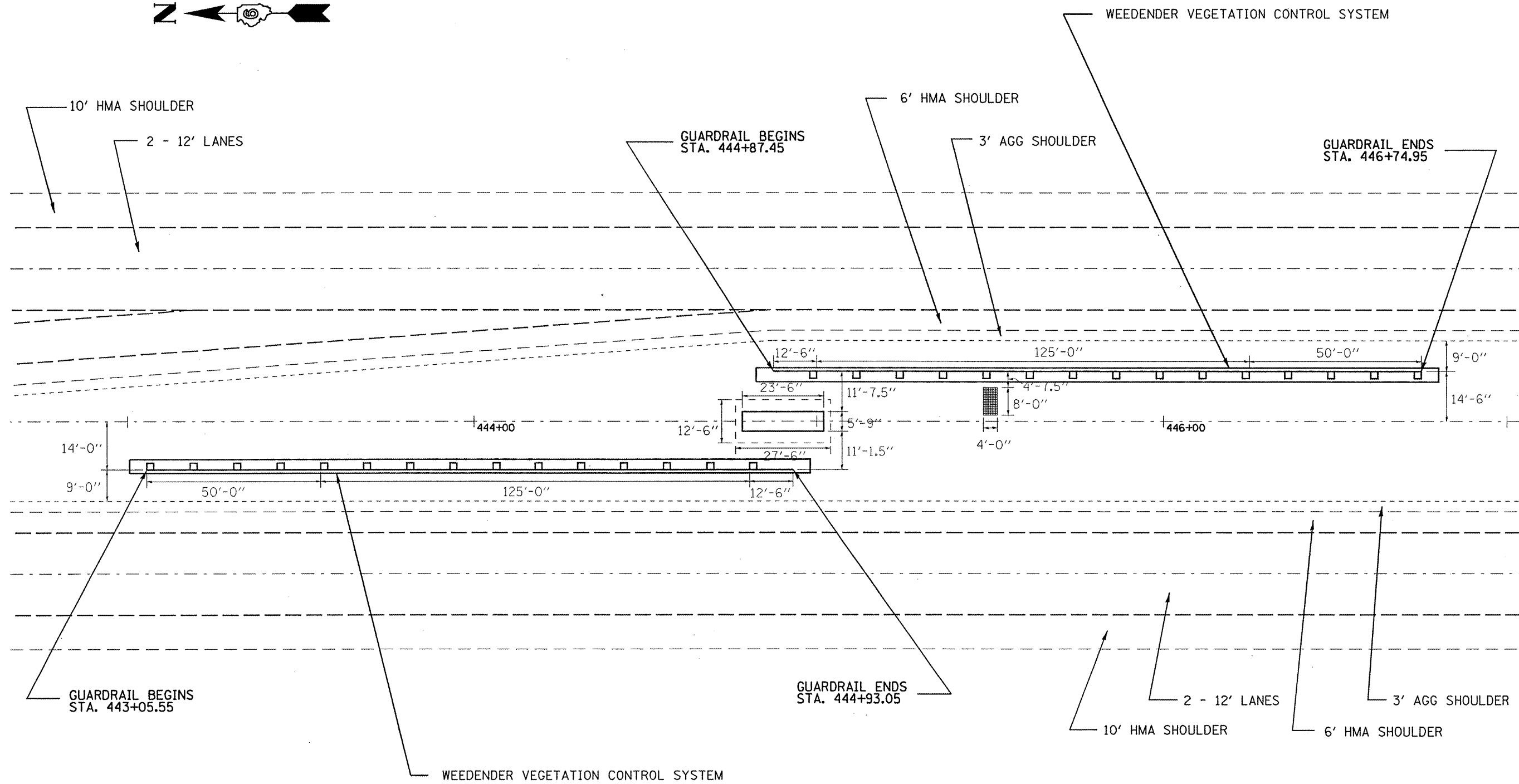
INDEX OF SHEETS	
SHEET NO.	DISCRIPTION
1	COVER SHEET
2	GENERAL NOTES
3	SUMMARY OF QUANTITIES
3	SCHEDULE OF QUANTITIES
4	PLAN SHEET
5	HOLE PLACEMENT DETAILS

DISTRICT SIX	
EXAMINED <i>[Signature]</i> <u>3/22</u> 20 <u>10</u>	
OPERATIONS ENGINEER	
EXAMINED <u>March 17</u> 20 <u>10</u>	
<i>2RML-1</i>	
PROGRAM DEVELOPMENT ENGINEER	
EXAMINED <u>MARCH 19</u> 20 <u>10</u>	
<i>[Signature]</i>	
PROGRAM IMPLEMENTATION ENGINEER	

ILLINOIS DEPARTMENT OF TRANSPORTATION						
SUMMARY OF QUANTITIES						
LOCATION OF WORK				CONSTRUCTION CODE TYPE		
CODE NO.	ITEM	UNIT	TOTAL QUANTITY	SAFETY FUNDS 90% FED 10% STATE		
63000001	STEEL PLATE BEAM GUARD RAIL, TYPE A, 6 FOOT POSTS	FOOT	250	250		
63100045	TRAFFIC BARRIER TERMINAL, TYPE 2	EACH	2	2		
63100167	TRAFFIC BARRIER TERMINAL, TYPE 1 (SPECIAL) TANGENT	EACH	2	2		
67100100	MOBILIZATION	L SUM	1	1		
78200410	GUARDRAIL MARKER, TYPE A	EACH	8	8		
78201000	TERMINAL MARKER - DIRECT APPLIED	EACH	2	2		
K100910	VEGETATION CONTROL SYSTEM	SQ YD	176	176		

GUARDRAIL SCHEDULE						
LOCATION			OFFSET	STEEL PLATE BEAM GUARD RAIL	TRAFFIC BARRIER TERMINAL, TYPE 1 (SPECIAL) TANGENT	TRAFFIC BARRIER TERMINAL, TYPE 2
STATION	TO	STATION	LT / RT	FOOT	EACH	EACH
443+05.55	-	443+55.55	RT 14'		1	
443+55.55	-	444+80.55	RT 14'	125		
444+80.55	-	444+93.05	RT 14'			1
444+87.45	-	444+99.95	LT 14.5'			1
444+99.95	-	446+24.95	LT 14.5'	125		
446+24.95	-	446+74.95	LT 14.5'		1	
TOTAL =				250	2	2

VEGETATION CONTROL SCHEDULE				
LOCATION			OFFSET	VEGETATION CONTROL SYSTEM
STATION	TO	STATION	LT / RT	SQ YD
443+00.00	-	444+98.00	RT 14'	88
444+82.00	-	446+80.00	LT 14.5'	88
TOTAL =				176



FILE NAME =	USER NAME = laughlinr1	DESIGNED -	REVISED -
c:\pwork\p\WIDOT\LAUGHLINR1\0182857\0572048-shr-details.dgn		DRAWN -	REVISED -
PLOT SCALE = 30.0000' / IN.		CHECKED -	REVISED -
PLOT DATE = Mar-24-2010 01:50:40PM		DATE -	REVISED -

**STATE OF ILLINOIS
DEPARTMENT OF TRANSPORTATION**

PLAN VIEW

SCALE: SHEET NO. OF SHEETS STA. TO STA.

F.A.P. RTE.	SECTION	COUNTY	TOTAL SHEETS	SHEET NO.
662	3 I-10	SANGAMON	5	4
CONTRACT NO. 72D48			ILLINOIS FED. AID PROJECT	

