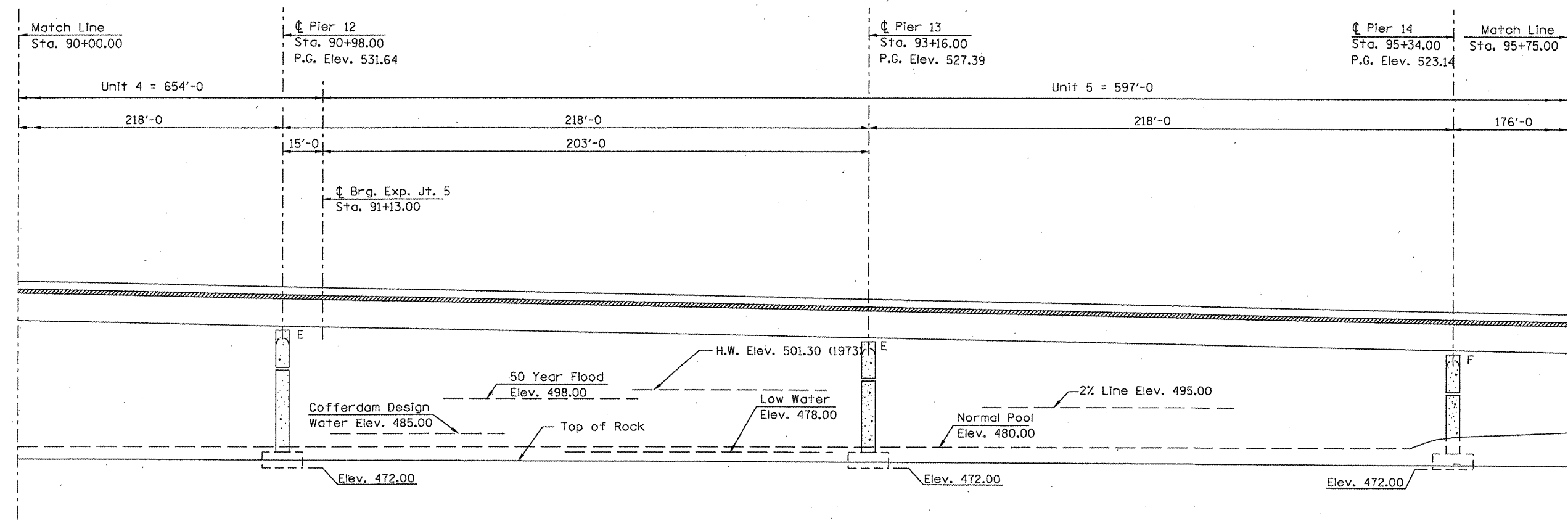
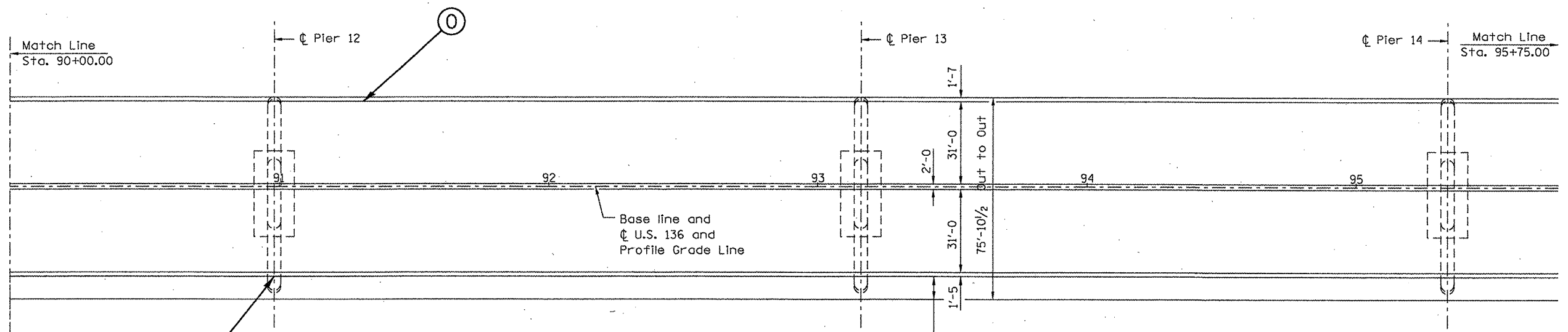


F.A.P. RTE.	SECTION	COUNTY	TOTAL SHEETS	SHEET NO.
315	(228)1-1	HANCOCK	13	10



LONGITUDINAL SECTION ALONG U.S. 136



○ DENOTES REPAIR AREA (SEE SCHEDULE)

PLAN

REVISIONS	
NAME	DATE

ILLINOIS DEPARTMENT OF TRANSPORTATION
 PLAN AND PROFILE
 FAP 315 (US 136)
 SECTION (228)1-1
 HANCOCK COUNTY