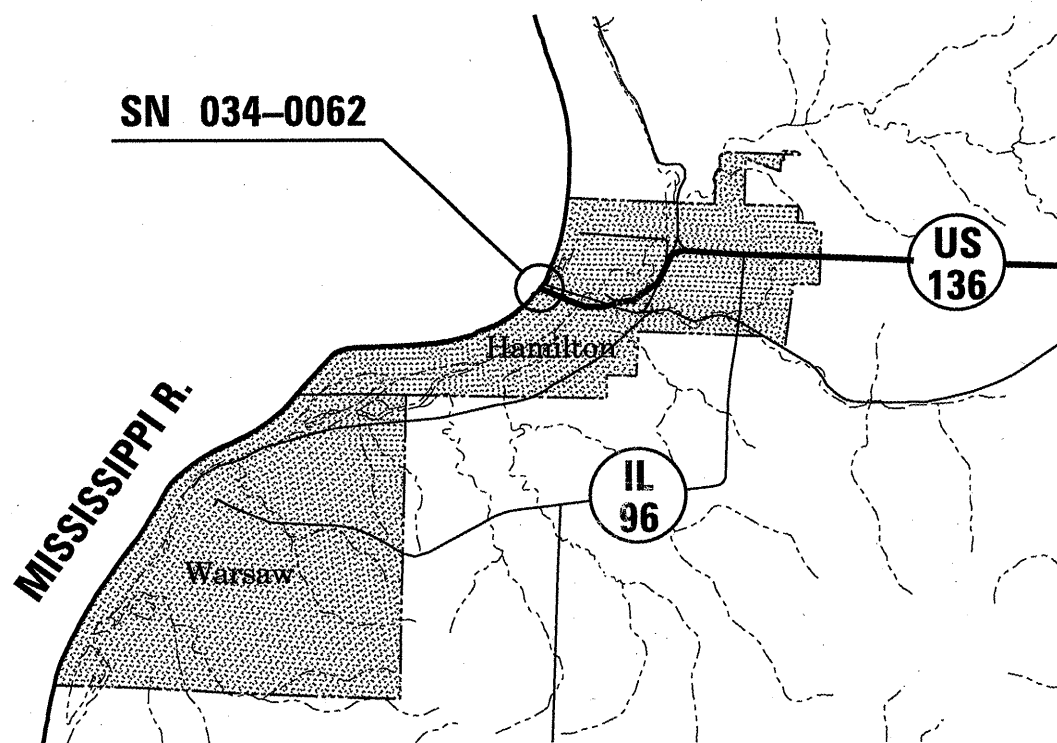


STATE OF ILLINOIS  
DEPARTMENT OF TRANSPORTATION  
DIVISION OF HIGHWAYS  
**PROPOSED  
HIGHWAY PLANS**

FOR INDEX OF SHEETS, SEE SHEET NO. 2

FAP ROUTE 315 (US 136)  
SECTION (22B)I-1

BRIDGE REPAIR  
HANCOCK COUNTY  
C-96-183-10



NET LENGTH = 3340 FT. = 0.63 MILE

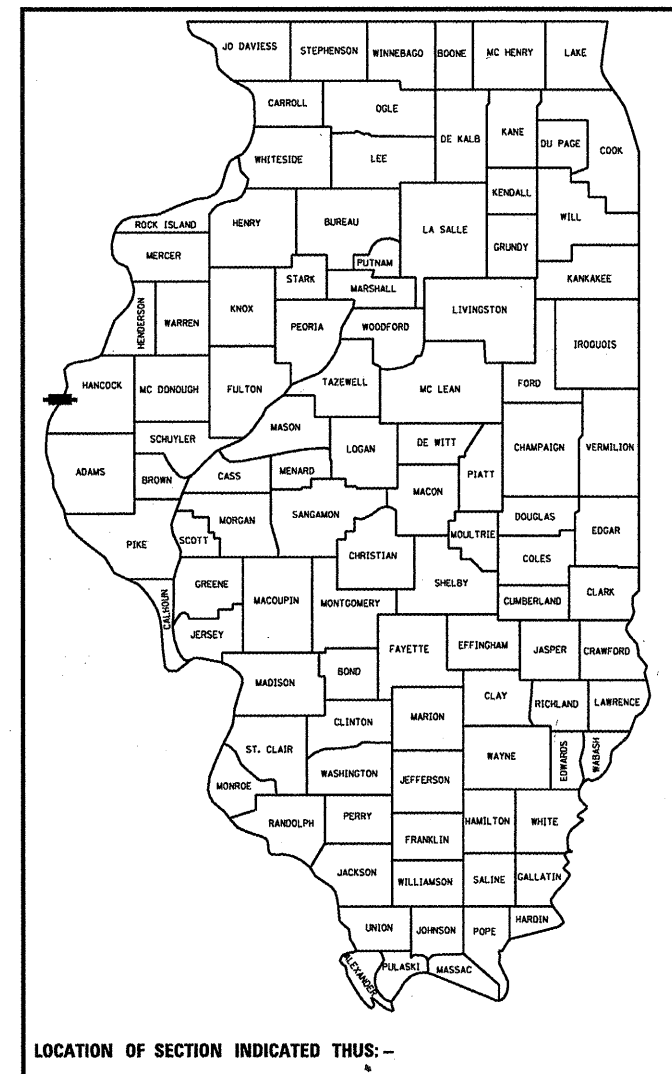
J.U.L.I.E.  
JOINT UTILITY LOCATION INFORMATION FOR EXCAVATION  
1-800-892-0123  
OR 811

D6 BRIDGE MAINTENANCE ENGINEER -  
STEVE BERAN (217) 785-9290  
D6 BRIDGE INSPECTION ENGINEER -  
DAVE COPENBARGER (217) 785-5306

CONTRACT NO. 72D52

F.A.P. RTE.	SECTION	COUNTY	TOTAL SHEETS	SHEET NO.
315	(22B)I-1	HANCOCK	13	1
FED. ROAD DIST. NO. 6		ILLINOIS	CONTRACT NO. 72D52	

C-96-183-10



LOCATION OF SECTION INDICATED THIS: -

STATE OF ILLINOIS  
DEPARTMENT OF TRANSPORTATION  
DIVISION OF HIGHWAYS

SUBMITTED February 17 20 10  
Reg. Z. D. ...  
DEPUTY DIRECTOR OF HIGHWAYS, REGION ENGINEER

May 7 20 10  
Scott E. Stitt P.E.  
acting ENGINEER OF DESIGN AND ENVIRONMENT

May 7 20 10  
Christina M. Reed  
DIRECTOR OF HIGHWAYS, CHIEF ENGINEER

**PRINTED BY THE AUTHORITY  
OF THE STATE OF ILLINOIS**



CONTRACT NO. 72052

F.A.P. RTE.	SECTION	COUNTY	TOTAL SHEETS	SHEET NO.
315	(228)I-1	HANCOCK	13	3
STA.		TO STA.		
FED. ROAD DIST. NO. 6 ILLINOIS FED. AID PROJECT				

SUMMARY OF QUANTITIES

CODE NO.	ITEM	UNIT	100% STATE
			SFTY-2A
			TOTAL QTY
5012400	CONCRETE REMOVAL	CU YD	1.6
50157300	PROTECTIVE SHIELD	SQ YD	50
50300255	CONCRETE SUPERSTRUCTURE	CU YD	1.6
50501140	STRUCTURAL STEEL REPAIR	L SUM	1
50800205	REINFORCEMENT BARS, EPOXY COATED	POUND	106
50900705	HANDRAIL REMOVAL	L SUM	1
50901760	PIPE HANDRAIL	FOOT	68
67100100	MOBILIZATION	L SUM	1
70100310	TRAFFIC CONTROL AND PROTECTION, STANDARD 701421	L SUM	1
X7010825	TRAFFIC CONTROL AND PROTECTION, STANDARD 701423, SPECIAL	L SUM	1
70400100	TEMPORARY CONCRETE BARRIER	FOOT	250
70400200	RELOCATE TEMPORARY CONCRETE BARRIER	FOOT	250
Z0030260	IMPACT ATTENUATORS, TEMPORARY (FULLY REDIRECTIVE, NARROW), TEST LEVEL 3	EACH	1
Z0030330	IMPACT ATTENUATORS, RELOCATE (FULLY REDIRECTIVE), TEST LEVEL 3	EACH	1

REVISIONS	
NAME	DATE

ILLINOIS DEPARTMENT OF TRANSPORTATION

SUMMARY OF QUANTITIES

FAP 315 (IS 136)  
SECTION (228)I-1  
HANCOCK COUNTY

SCALE: VERT.  
DATE      HORIZ.

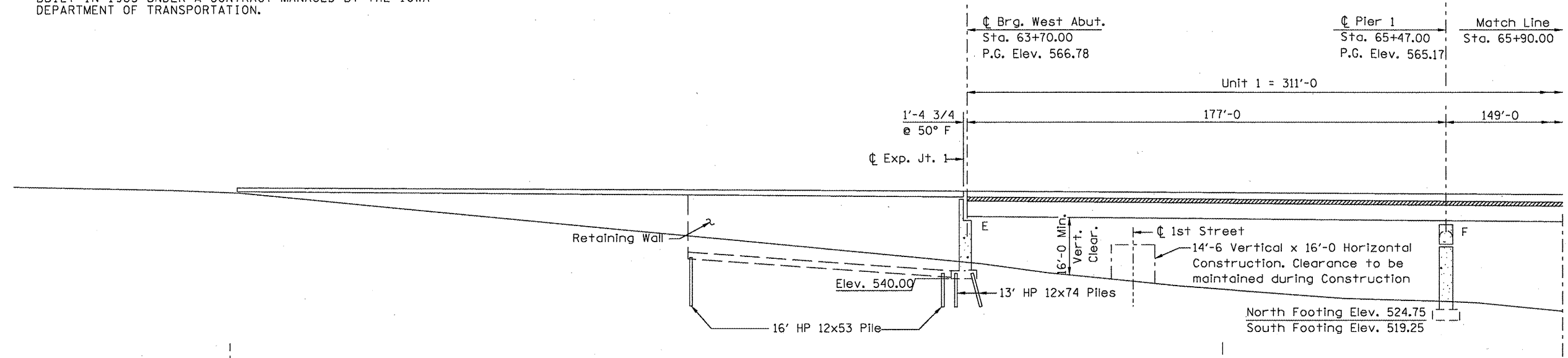
DRAWN BY  
CHECKED BY



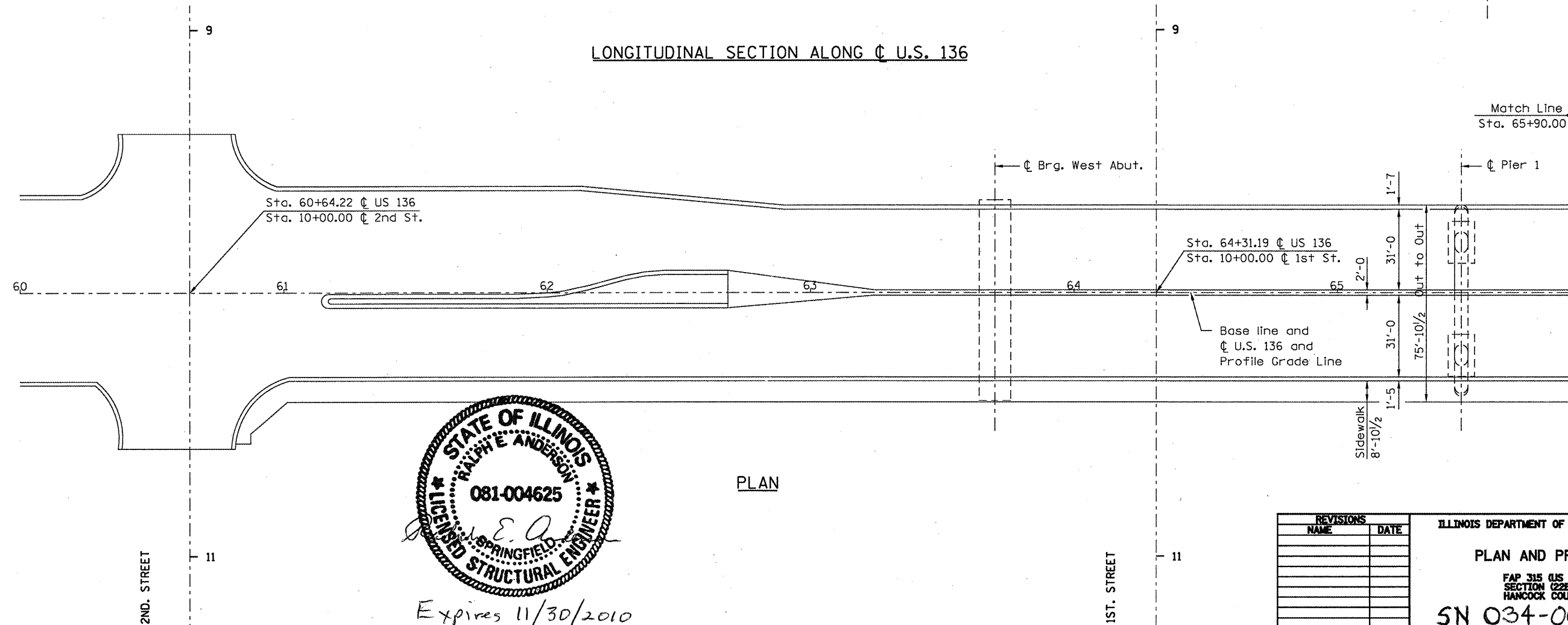
F.A.P. RTE.	SECTION	COUNTY	TOTAL SHEETS	SHEET NO.
315	(22B)-1	HANCOCK	13	5

**EXISTING STRUCTURE:**

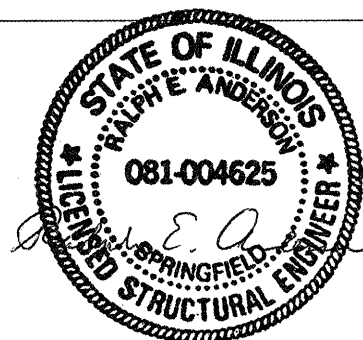
SN 034-0062 CONSISTS OF 15 STEEL MULTI-BEAM WELDED PLATE GIRDER SPANS, WITH AN OVERALL LENGTH OF 3,340 FT MEASURED FROM BACK-TO-BACK OF ABUTMENTS, AND A TOTAL DECK WIDTH OF 75' 10". THE BRIDGE ROADWAY, COMPRISED OF TWO LANES IN EACH DIRECTION DIVIDED BY A BARRIER WALL, HAS A TOTAL COMBINED WIDTH OF 62' 0". THERE IS AN 8' 10" WIDE SIDEWALK ON THE SOUTH SIDE OF THE BRIDGE. THE BRIDGE CARRIES US 136 OVER THE MISSISSIPPI RIVER BETWEEN HAMILTON, ILLINOIS, AND KEOKUK, IOWA, AND WAS BUILT IN 1985 UNDER A CONTRACT MANAGED BY THE IOWA DEPARTMENT OF TRANSPORTATION.



**LONGITUDINAL SECTION ALONG C U.S. 136**



**PLAN**



Expires 11/30/2010

REVISIONS	
NAME	DATE

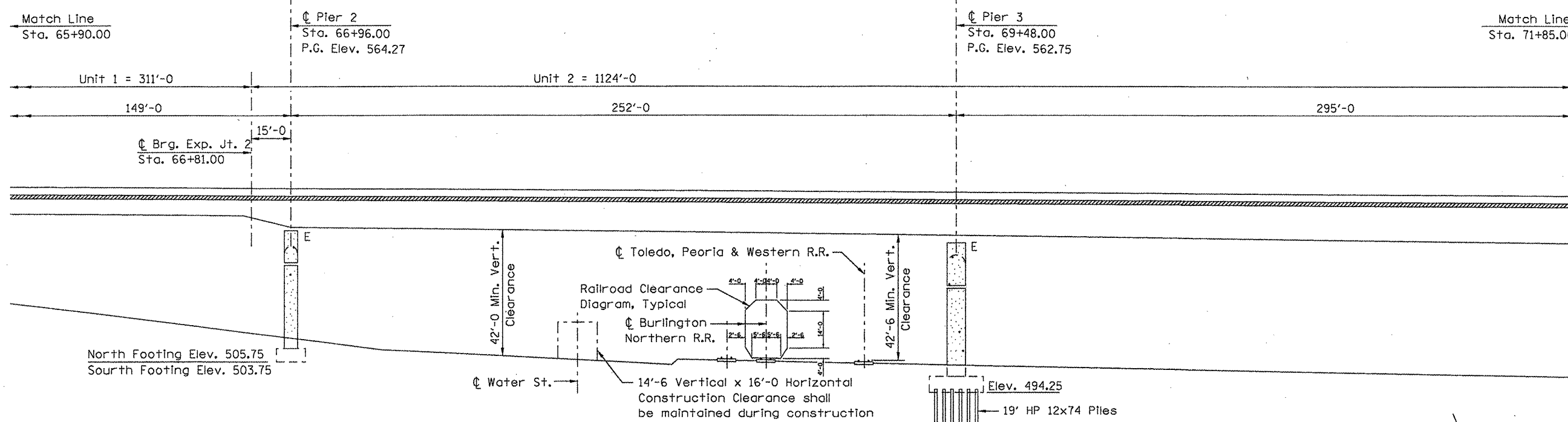
ILLINOIS DEPARTMENT OF TRANSPORTATION

PLAN AND PROFILE

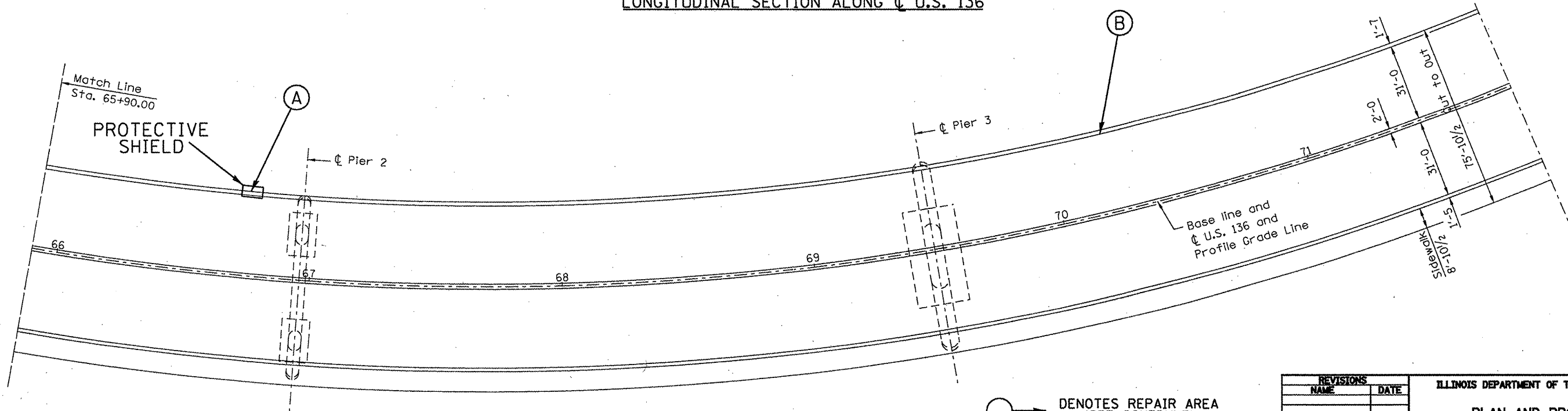
FAP 315 (US 136)  
SECTION (22B)-1  
HANCOCK COUNTY

SN 034-0062

F.A.P. RTE.	SECTION	COUNTY	TOTAL SHEETS	SHEET NO.
315	(22B)-1	HANCOCK	13	6



**LONGITUDINAL SECTION ALONG U.S. 136**



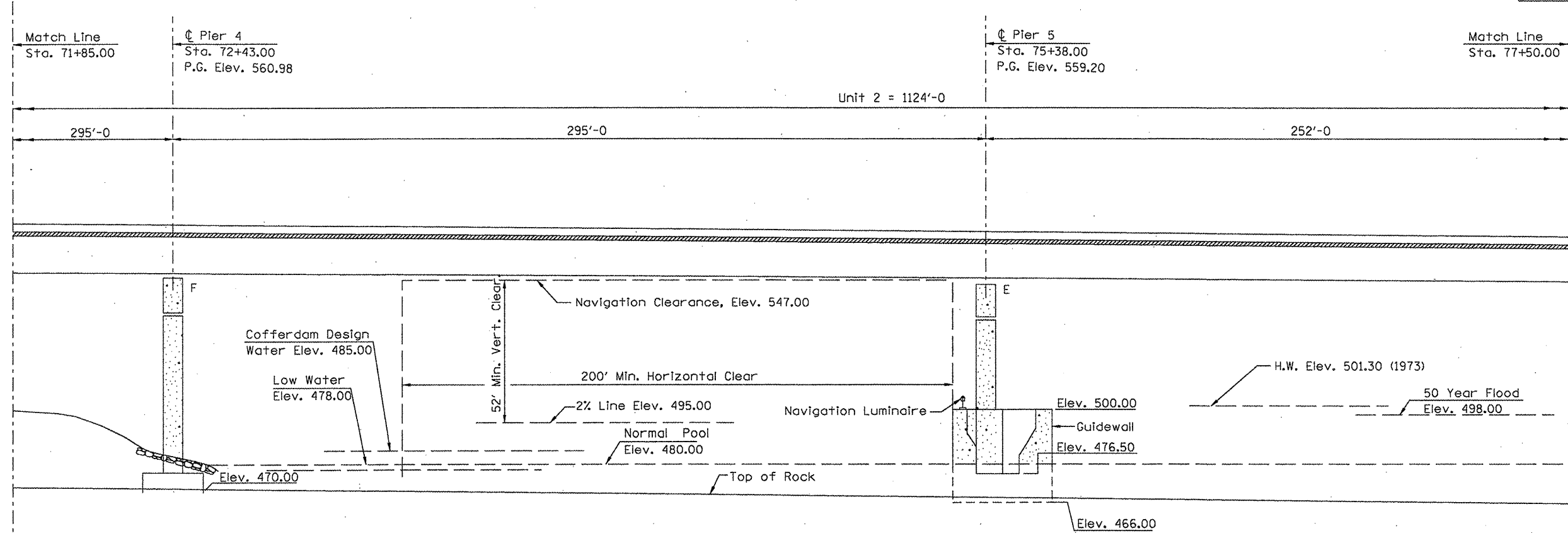
**PLAN**

○ → DENOTES REPAIR AREA (SEE SCHEDULE)

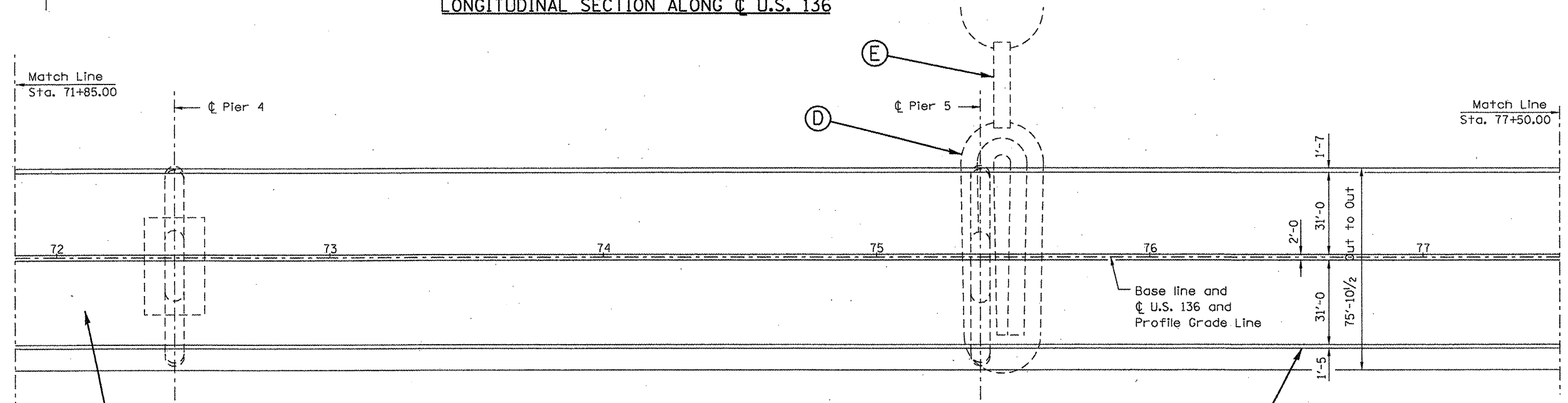
REVISIONS	
NAME	DATE

ILLINOIS DEPARTMENT OF TRANSPORTATION  
**PLAN AND PROFILE**  
 FAP 315 (U.S. 136)  
 SECTION (22B)-1  
 HANCOCK COUNTY

F.A.P. RTE.	SECTION	COUNTY	TOTAL SHEETS	SHEET NO.
315	(228)1-1	HANCOCK	13	7
STA.		TO STA.		
FED. ROAD DIST. NO. 6 ILLINOIS FED. AID PROJECT				



LONGITUDINAL SECTION ALONG C U.S. 136



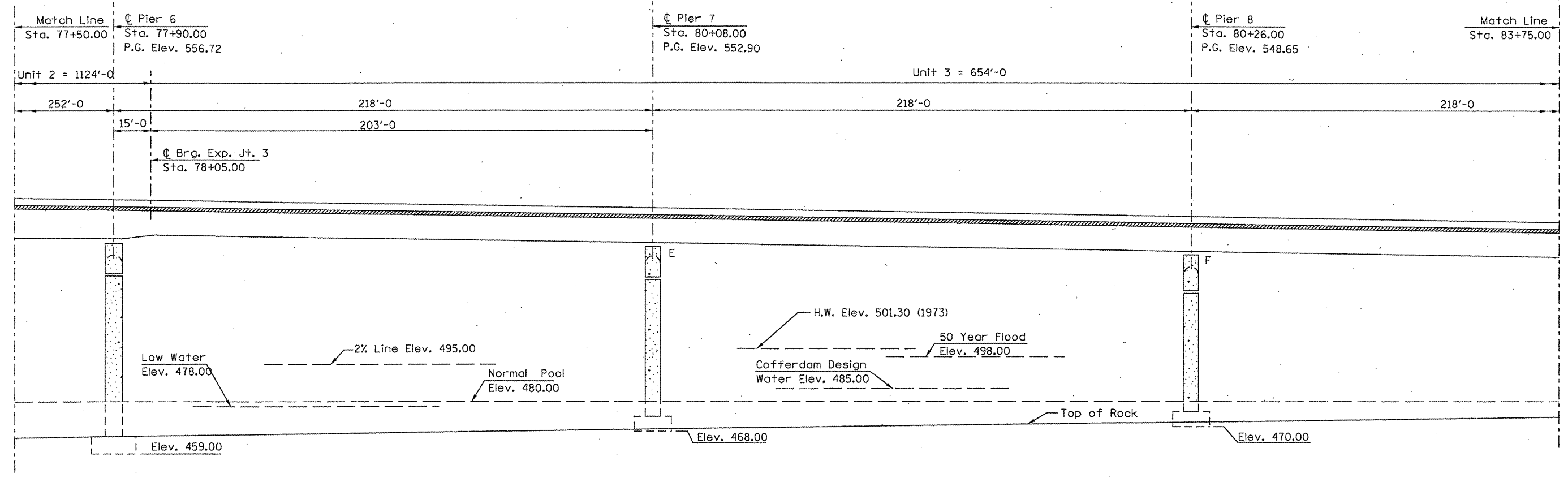
○ → DENOTES REPAIR AREA (SEE SCHEDULE)

PLAN

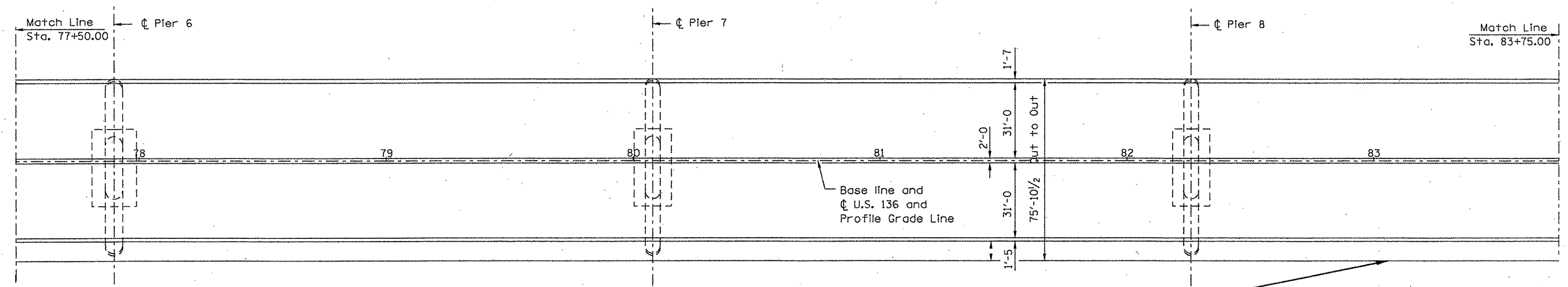
REVISIONS	
NAME	DATE

ILLINOIS DEPARTMENT OF TRANSPORTATION  
**PLAN AND PROFILE**  
 FAP 315 (US 136)  
 SECTION (228)1-1  
 HANCOCK COUNTY

F.A.P. RTE.	SECTION	COUNTY	TOTAL SHEETS	SHEET NO.
315	(22B)-1	HANCOCK	13	8



LONGITUDINAL SECTION ALONG C U.S. 136



○ → DENOTES REPAIR AREA (SEE SCHEDULE)

PLAN

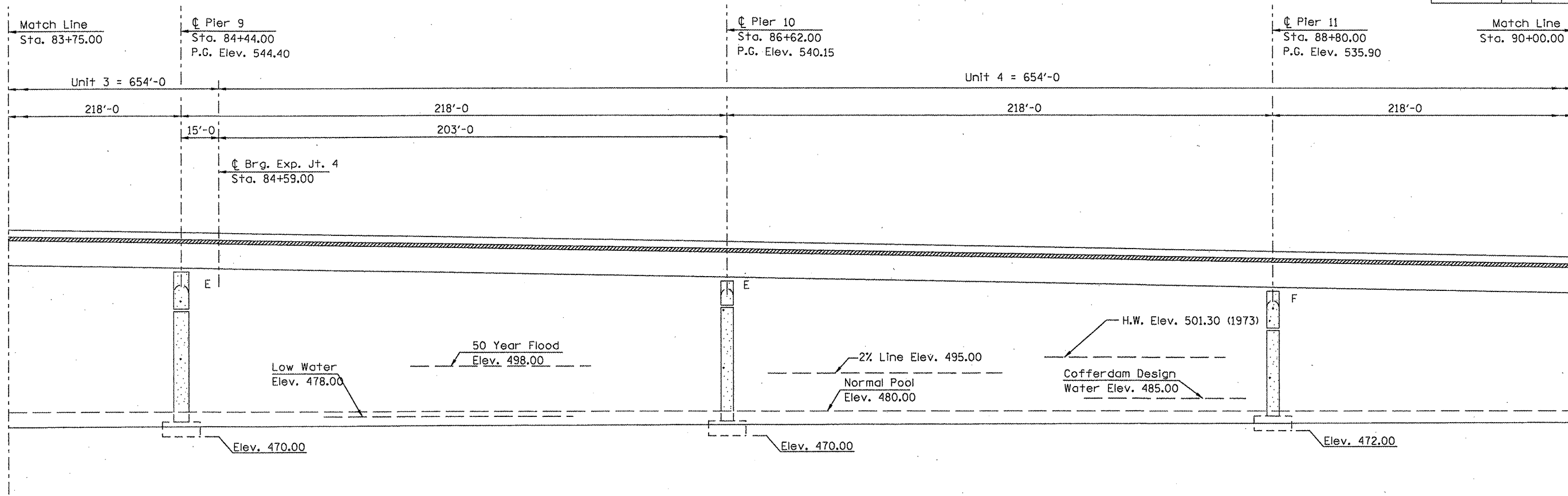
○

REVISIONS	
NAME	DATE

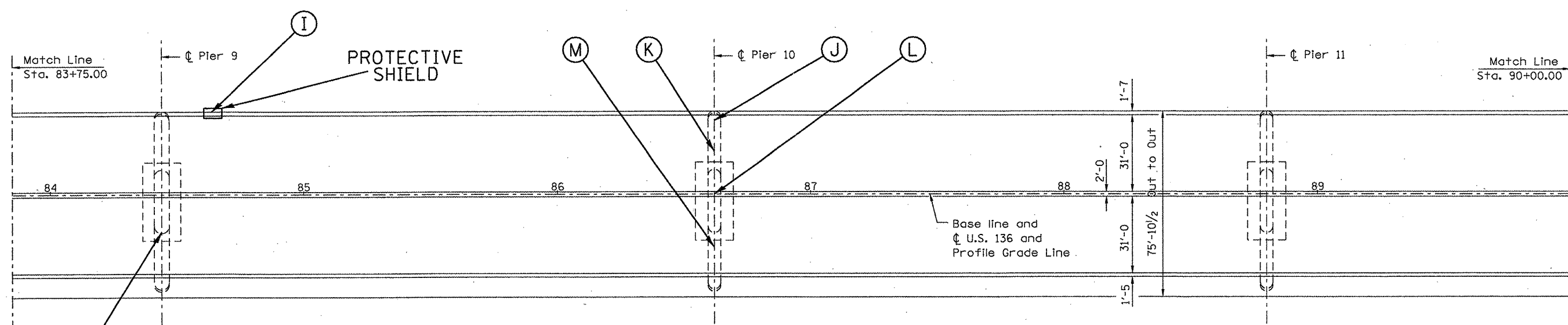
ILLINOIS DEPARTMENT OF TRANSPORTATION  
**PLAN AND PROFILE**  
 FAP 315 (US 136)  
 SECTION (22B)-1  
 HANCOCK COUNTY



F.A.P. RTE.	SECTION	COUNTY	TOTAL SHEETS	SHEET NO.
315	(22B)I-1	HANCOCK	13	9



LONGITUDINAL SECTION ALONG U.S. 136



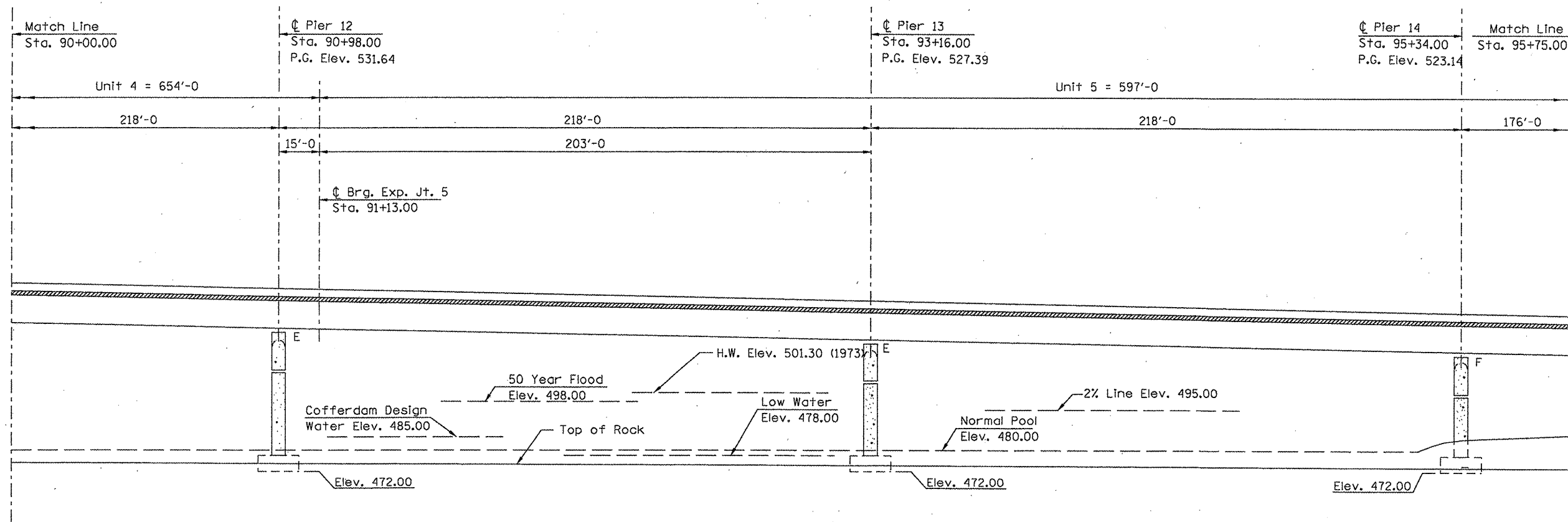
○ → DENOTES REPAIR AREA (SEE SCHEDULE)

PLAN

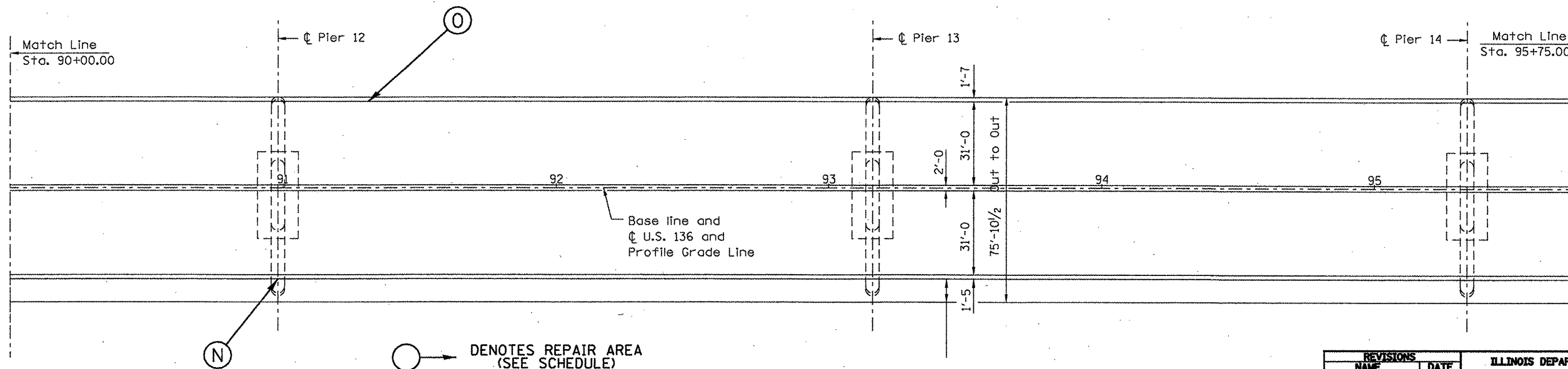
REVISIONS	
NAME	DATE

ILLINOIS DEPARTMENT OF TRANSPORTATION  
**PLAN AND PROFILE**  
 FAP 315 (US 136)  
 SECTION (22B)I-1  
 HANCOCK COUNTY

F.A.P. RTE.	SECTION	COUNTY	TOTAL SHEETS	SHEET NO.
315	(228)1-1	HANCOCK	13	10



LONGITUDINAL SECTION ALONG U.S. 136

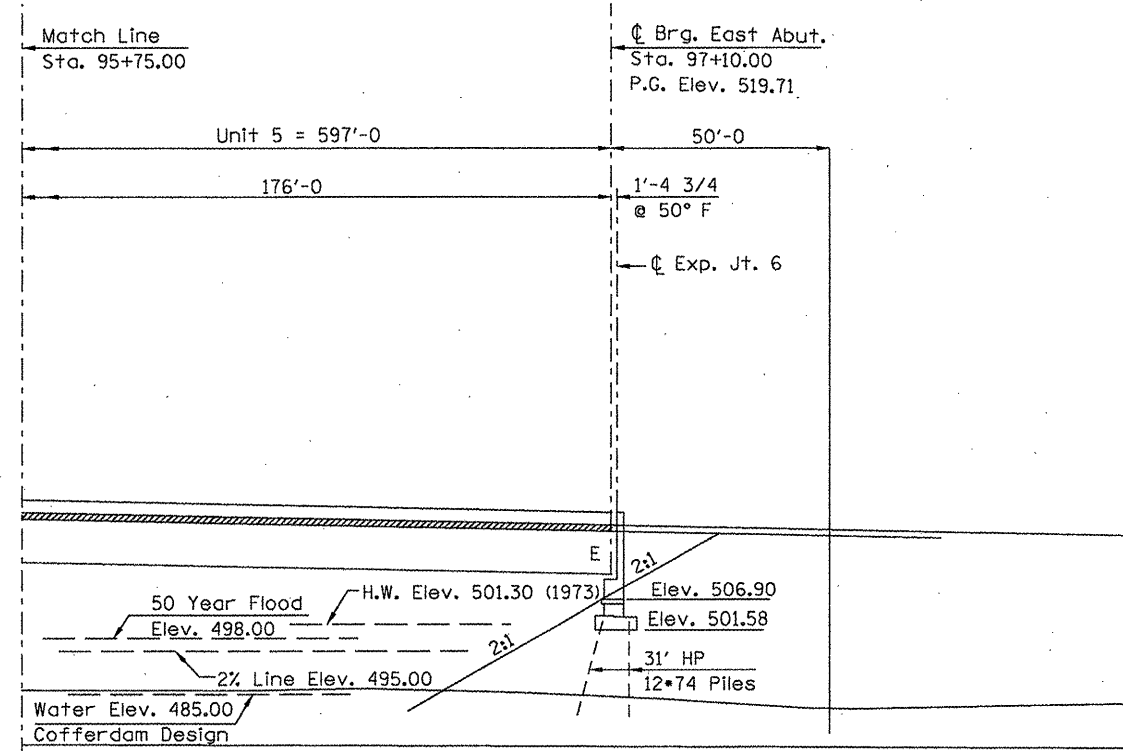


PLAN

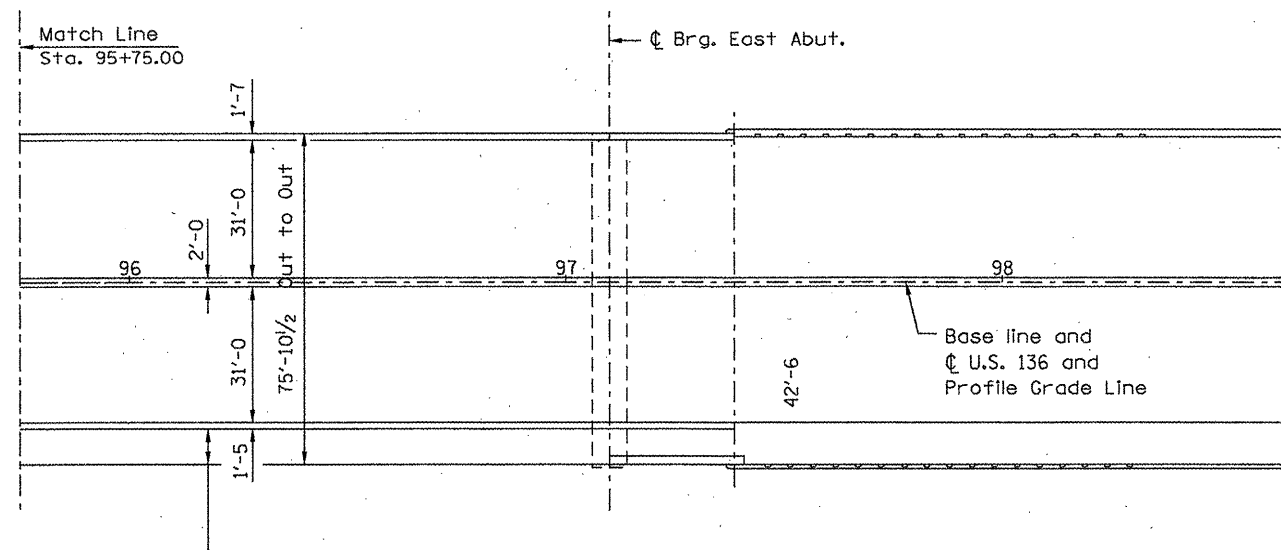
REVISIONS	
NAME	DATE

ILLINOIS DEPARTMENT OF TRANSPORTATION  
 PLAN AND PROFILE  
 FAP 315 (US 136)  
 SECTION (228)1-1  
 HANCOCK COUNTY

F.A.P. RTE.	SECTION	COUNTY	TOTAL SHEETS	SHEET NO.
315	(22B)I-1	HANCOCK	13	11



LONGITUDINAL SECTION ALONG  $\dot{C}$  U.S. 136



PLAN

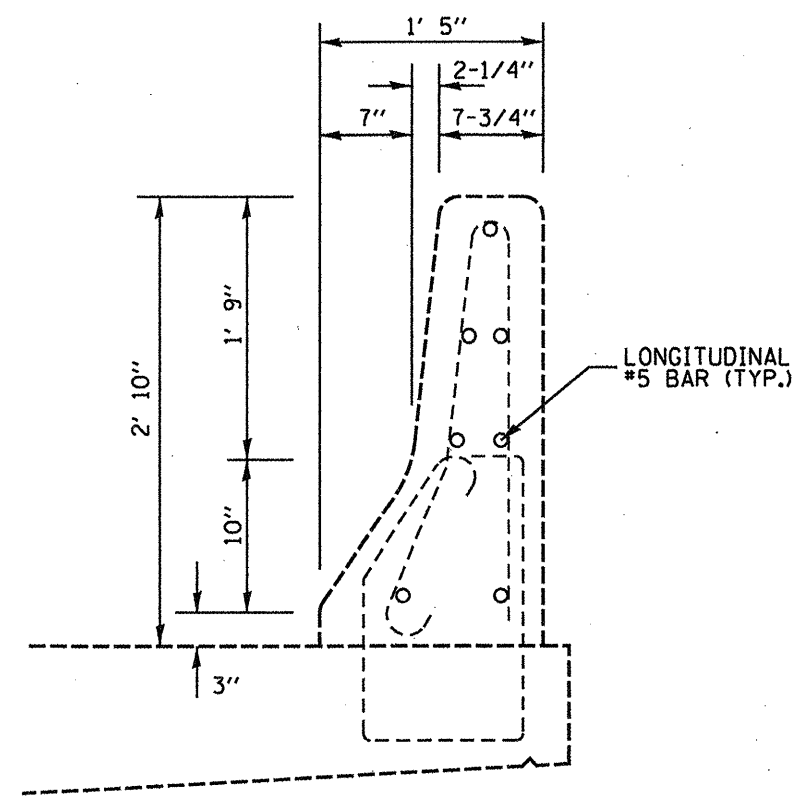
REVISIONS	
NAME	DATE

ILLINOIS DEPARTMENT OF TRANSPORTATION

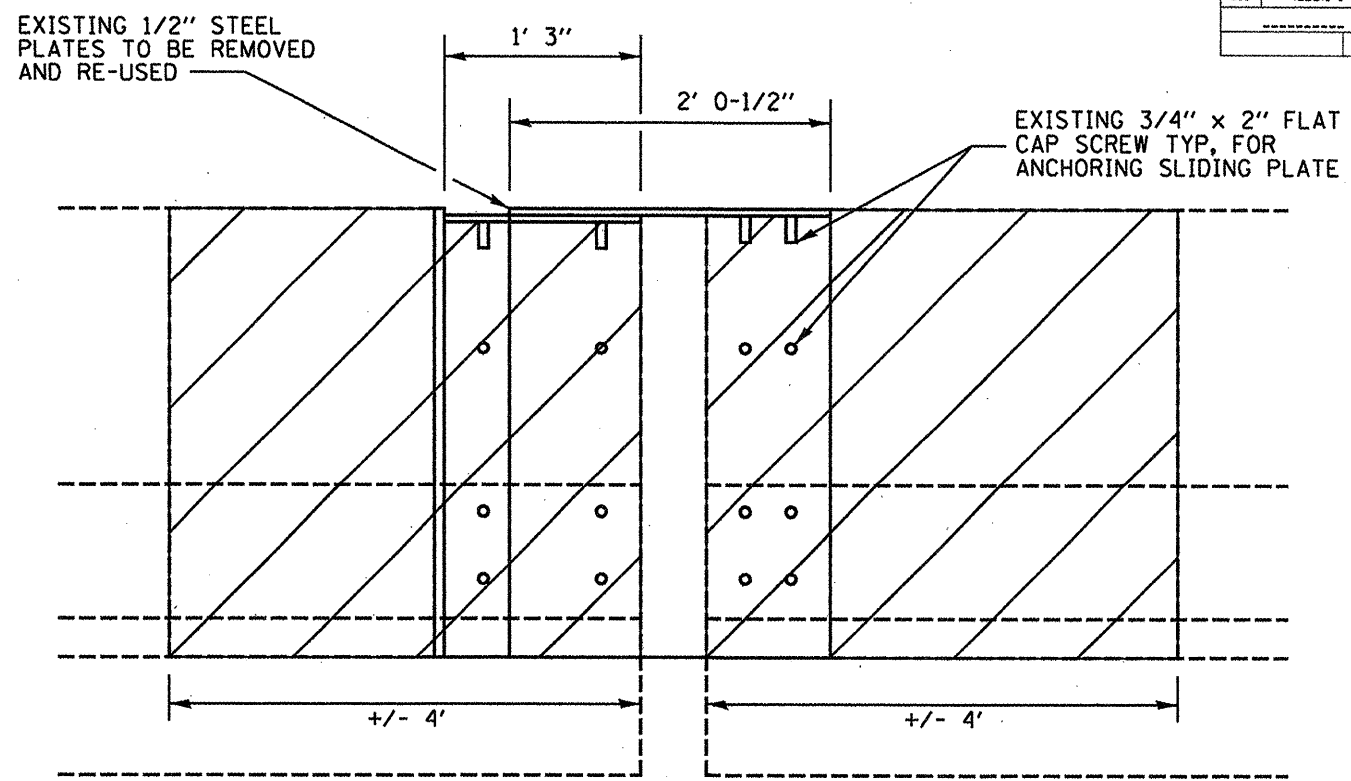
PLAN AND PROFILE

FAP 315 (US 136)  
SECTION (22B)I-1  
HANCOCK COUNTY

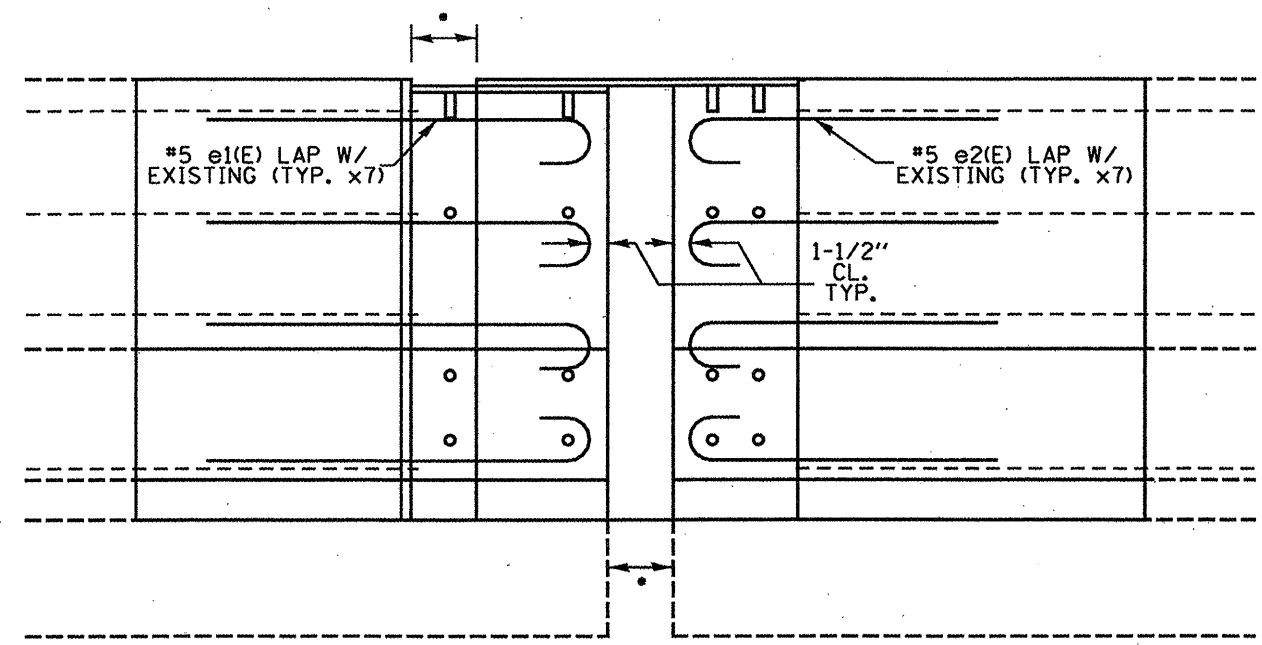
F.A.P. RTE.	SECTION	COUNTY	TOTAL SHEETS	SHEET NO.
315	(228)1-1	HANCOCK	13	12



EXISTING EDGE PARAPET  
CROSS SECTION W/ REINFORCEMENT



EXISTING TYPICAL PARAPET  
ELEVATION VIEW AT EXPANSION JTS.



PROPOSED TYPICAL PARAPET  
ELEVATION VIEW AT EXPANSION JTS.  
(VERTICAL REINFORCEMENT NOT SHOWN)

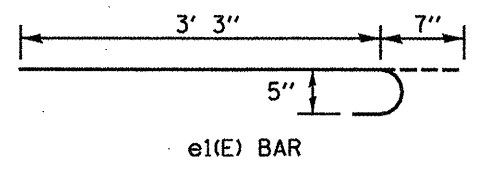
BILL OF MATERIAL (2 JOINTS)				
BAR	NO.	SIZE	SHAPE	LENGTH
e1(E)	14	5		3' 10"
e2(E)	14	5		3' 5"
REINFORCEMENT BARS (EPOXY COATED)			106 LBS	
CONC. REMOVAL			1.6 CU YD	
CONC. SUPERSTRUCTURE			1.6 CU YD	

NOTES:

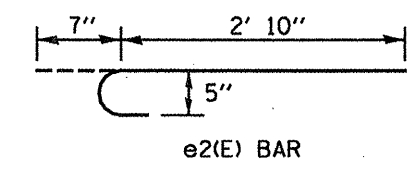
ALL EXISTING REINFORCEMENT IS TO REMAIN. ANY DAMAGE TO EXISTING REINFORCEMENT SHALL BE REPAIRED OR REPLACED AT THE CONTRACTOR'S EXPENSE.

ALL PROPOSED REINFORCEMENT SHALL BE LAPPED A MINIMUM OF 2' 2" WITH THE EXISTING REINFORCEMENT. THE PROPOSED REINFORCEMENT MAY BE TRIMMED TO FIT PROVIDED THAT THE MINIMUM LAP LENGTH IS STILL ACHIEVED.

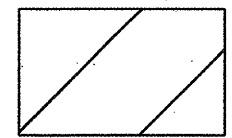
THE SLIDING PLATES SHALL BE RE-ANCHORED WITH NEW 3/4" DIAMETER, 2" LONG FLAT HEAD CAP SCREWS AFTER THE NEW CONCRETE IS POURED. THE EXISTING SCREW HOLES SHALL BE RE-USED. THE CONCRETE INSERTS USED FOR ANCHORING SHALL BE APPROVED BY THE ENGINEER PRIOR TO INSTALLATION. THE COST OF THIS WORK SHALL BE INCLUDED IN THE BID PRICE FOR CONCRETE SUPERSTRUCTURE.



e1(E) BAR



e2(E) BAR



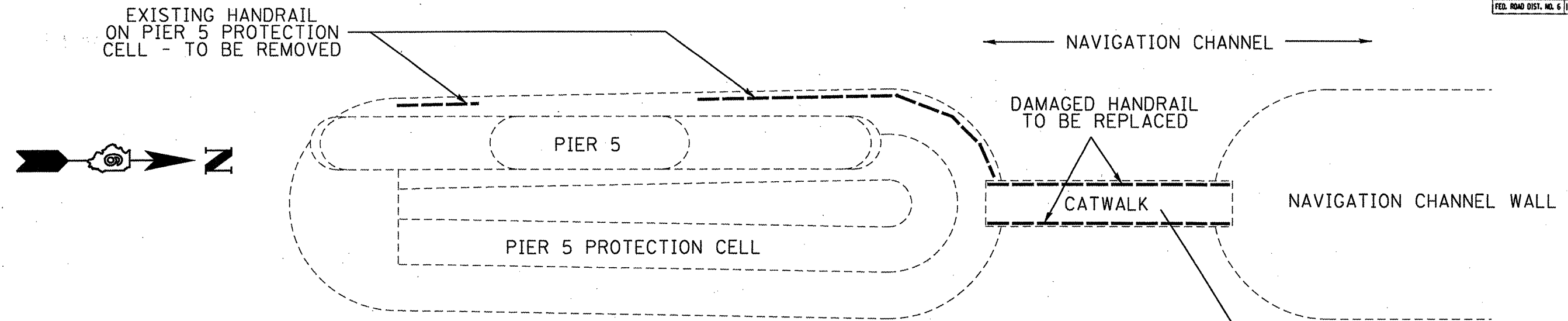
PROPOSED  
CONCRETE  
REMOVAL

REVISIONS	
NAME	DATE

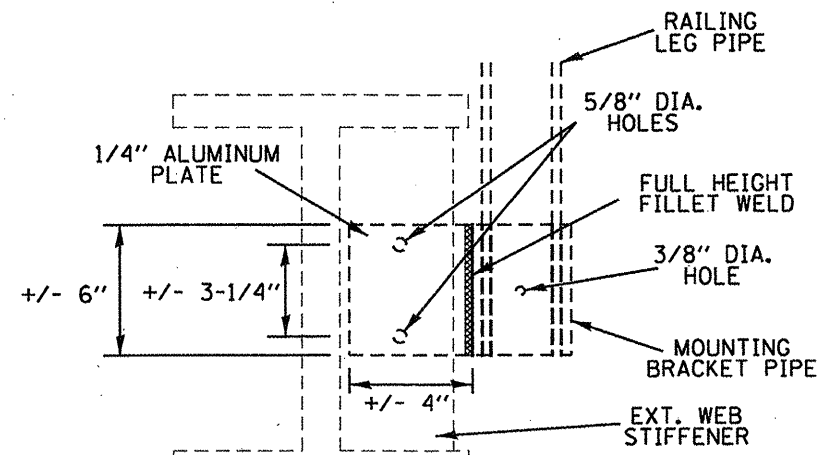
ILLINOIS DEPARTMENT OF TRANSPORTATION  
**PARAPET REPAIR DETAILS**  
FAP 315 (US 136)  
SECTION (228)1-1  
HANCOCK COUNTY

• EXPANSION GAP DIMENSION SHALL MATCH THE EXISTING GAP DIMENSION BETWEEN DECK ENDS AT TIME OF CONCRETE POUR.

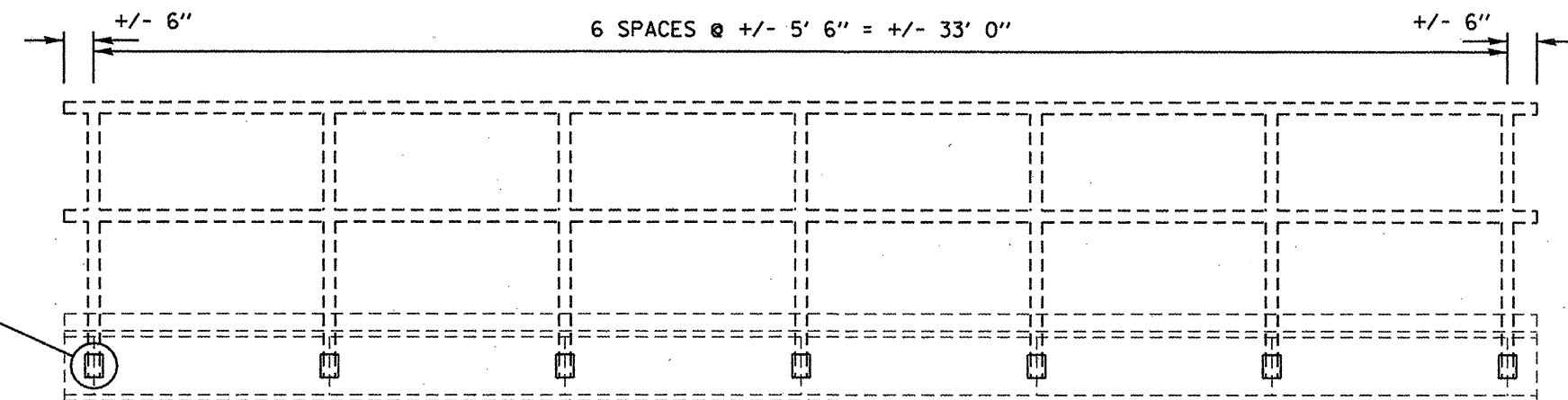
CONTRACT NO. 72052				
F.A.P. RTE.	SECTION	COUNTY	TOTAL SHEETS	SHEET NO.
315	(22B)I-1	HANCOCK	13	13
STA.		TO STA.		
FED. ROAD DIST. NO. 6 ILLINOIS FED. AID PROJECT				



HANDRAIL REPAIR AREAS - PLAN VIEW



TYPICAL EXISTING RAIL MOUNTING BRACKET ELEVATION VIEW



EXISTING CATWALK HANDRAIL ELEVATION

NOTES:

THE CONTRACTOR IS RESPONSIBLE FOR FIELD VERIFYING ALL PLAN DIMENSIONS PRIOR TO HANDRAIL FABRICATION.

THE NEW HANDRAIL SHALL BE HOLLAENDER SPEED-RAIL REMOVABLE RAILING OR EQUIVALENT (WWW.HOLLAENDER.COM). THE CONTRACTOR SHALL DESIGN A NEW HANDRAIL SYSTEM AND SUBMIT SHOP DRAWINGS TO THE ENGINEER FOR APPROVAL PRIOR TO ORDERING MATERIALS. THE HANDRAIL SHALL CONFORM TO ALL APPLICABLE OSHA STANDARDS, SPECIFICALLY 1910.23(e). THE RAIL SHALL BE CONSTRUCTED IN INDIVIDUAL SECTIONS BETWEEN 6' AND 16' IN LENGTH AND SHALL PROVIDE FOR EASY REMOVAL DURING FLOOD EVENTS. MOUNTING THE RAIL TO THE CATWALK USING THE EXISTING HOLES IN THE WEB STIFFENERS IS PREFERRED, BUT OTHER METHODS OF ATTACHMENT MAY BE USED IF APPROVED BY THE ENGINEER. THE PIPE USED SHALL BE 2" I. D. SCHEDULE 40, ALUMINUM ALLOY 6061-T6, WITH AN ANODIZED FINISH. ALL FITTINGS AND COUPLINGS SHALL ALSO HAVE AN ANODIZED FINISH. THE NEW HANDRAIL SHALL BE MEASURED FOR PAYMENT ALONG THE TOTAL LENGTH OF THE FINISHED RAILING.

ANY EXISTING HANDRAIL OR MOUNTING BRACKETS PRESENT ON THE CATWALK SHALL BE REMOVED PRIOR TO NEW RAIL INSTALLATION. THE COST FOR THIS WORK SHALL BE INCLUDED IN THE BID PRICE FOR HANDRAIL REMOVAL.

ACCESS TO THE WORK AREA SHALL BE VIA LOCK AND DAM #19. THE CONTRACTOR SHALL COORDINATE HIS WORK WITH THE ARMY CORPS OF ENGINEERS. THE CONTACT PERSON WILL BE LOCK MASTER, BILL ROBINSON, PHONE (319) 524-2631. THE CORPS OF ENGINEERS SHALL HAVE AUTHORITY TO REGULATE THE CONTRACTORS ACCESS TO THE WORK AREA. SPECIAL CARE SHALL BE TAKEN BY THE CONTRACTOR TO IN NO WAY INHIBIT THE FLOW OF BARGE TRAFFIC OR ENCUMBER THE OPERATION OF THE LOCK.

REVISIONS		ILLINOIS DEPARTMENT OF TRANSPORTATION
NAME	DATE	
		HANDRAIL DETAILS
SCALE: VERT. _____		DRAWN BY _____
DATE _____		

FAP 315 (US 136)  
SECTION (22B)I-1  
HANCOCK COUNTY