

STATE OF ILLINOIS
 DEPARTMENT OF TRANSPORTATION
 DIVISION OF HIGHWAYS

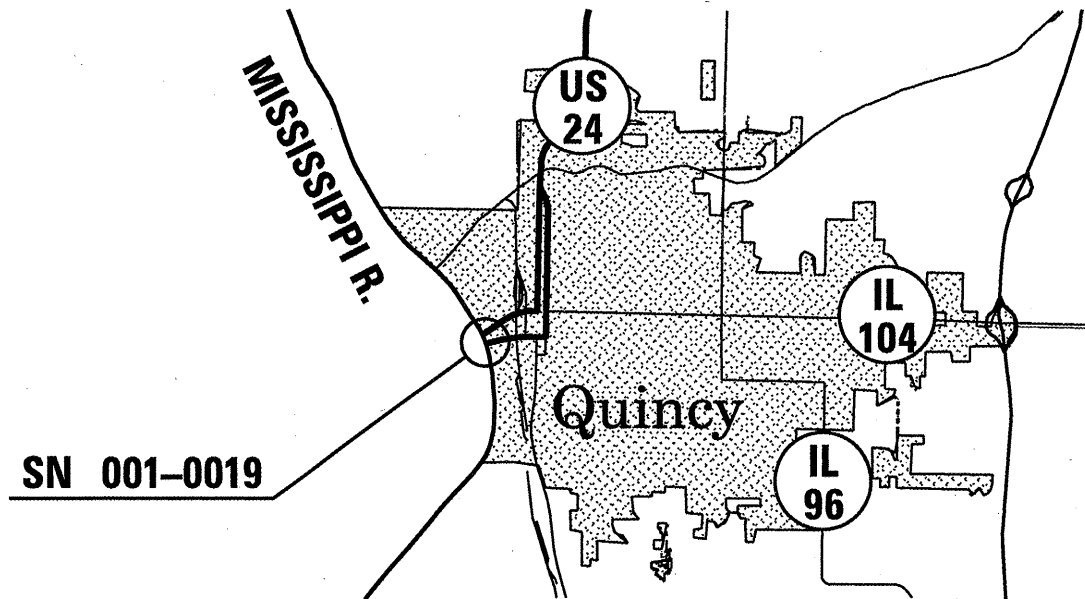
**PROPOSED
 HIGHWAY PLANS**

FAP ROUTE 63 (US 24)
 SECTION (1ZB)I-4

BRIDGE JOINT REPAIR
 ADAMS COUNTY

C-96-184-10

FOR INDEX OF SHEETS, SEE SHEET NO. 2



NET LENGTH = 3512 FT. = 0.67 MILE

ADT = 8500

J.U.L.I.E.
 JOINT UTILITY LOCATION INFORMATION FOR EXCAVATION
 1-800-892-0123
 OR 811

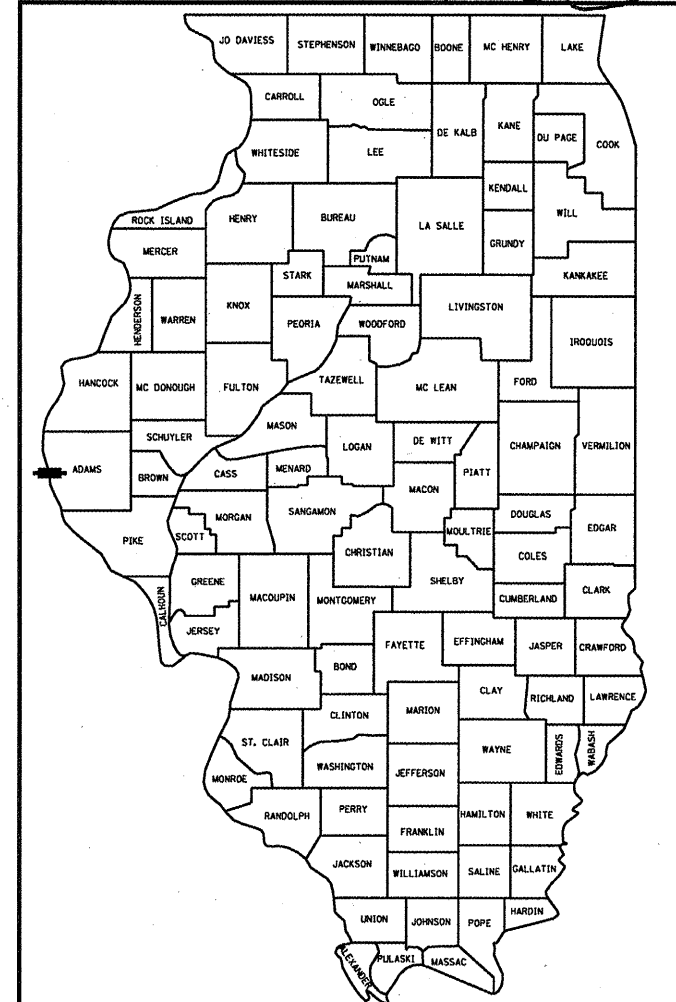
D6 BRIDGE MAINTENANCE ENGINEER -
 STEVE BERAN (217) 785-9290
 D6 BRIDGE INSPECTION ENGINEER -
 DAVE COPENBARGER (217) 785-5306

CONTRACT NO. 72D53

F.A.P. RTE.	SECTION	COUNTY	TOTAL SHEETS
63	(1ZB)I-4	ADAMS	8
FED. ROAD DIST. NO. 6	ILLINOIS	CONTRACT NO. 72D53	1

C-96-184-10

** 1 / 9*



LOCATION OF SECTION INDICATED THUS: -

STATE OF ILLINOIS
 DEPARTMENT OF TRANSPORTATION
 DIVISION OF HIGHWAYS

SUBMITTED *March 30* 20 *10*
By Z. Park
 DEPUTY DIRECTOR OF HIGHWAYS, REGION ENGINEER

May 7 20 *10*
Scott E. Stitt, P.E. / sc
 acting ENGINEER OF DESIGN AND ENVIRONMENT

May 7 20 *10*
Christine M. Reed / sc
 DIRECTOR OF HIGHWAYS, CHIEF ENGINEER

PRINTED BY THE AUTHORITY
 OF THE STATE OF ILLINOIS

Rev. 5-26-10

INDEX OF SHEETS

- 1 COVER SHEET
- 2 INDEX, STANDARDS, & GENERAL NOTES
- 3 SUMMARY OF QUANTITIES
- 4 SCHEDULES OF QUANTITIES
- 5 BRIDGE PLAN AND ELEVATION
- 6 MAXIMUM WIDTH SIGNING PLAN
- 7 DECK PATCHING DETAIL
- 8 EXPANSION JOINT DETAILS

STANDARDS

- 701101-02
- 701106-02
- 701421-02
- 701422-02
- 701901-01

8A. Bridge Drainage System Details

GENERAL NOTES:

WORK ZONE SPEED LIMIT SIGNS DETAILED IN THE TRAFFIC CONTROL STANDARDS SHALL BE CHANGED FROM 45 MPH TO 35 MPH.

THE REMOVAL OF THE EXISTING POLYMER CONCRETE AND ALL EXISTING JOINT MATERIAL SHALL BE INCLUDED IN THE COST FOR POLYMER CONCRETE.

PLAN DIMENSIONS AND DETAILS RELATIVE TO EXISTING PLANS ARE SUBJECT TO NOMINAL CONSTRUCTION VARIATIONS. THE CONTRACTOR SHALL FIELD VERIFY EXISTING DIMENSIONS AND DETAILS AFFECTING NEW CONSTRUCTION AND MAKE NECESSARY APPROVED ADJUSTMENTS PRIOR TO CONSTRUCTION OR ORDERING OF MATERIALS. SUCH VARIATIONS SHALL NOT BE CAUSE FOR ADDITIONAL COMPENSATION FOR A CHANGE IN SCOPE OF WORK. HOWEVER, THE CONTRACTOR WILL BE PAID FOR THE QUANTITY ACTUALLY FURNISHED BASED UPON THE UNIT PRICE BID FOR THE WORK.

Route FAP 63 (US 24)
Section (IZB) I-4
County Adams

DISTRICT SIX		
EXAMINED	MARCH 9	20 10
OPERATIONS ENGINEER		

Route FAP 63 (US 24)
Section (IZB) I-4
County Adams

EXAMINED	MARCH 30	20 10
PROGRAM IMPLEMENTATION ENGINEER		
EXAMINED	March 10	20 10
PROGRAM DEVELOPMENT ENGINEER		

ASPHALT MIXTURE TABLE				
MIX USE	PG	DESIGN AIR VOIDS	MIXTURE COMPOSITION (GRADATION MIXTURE)	FRICTION AGGREGATE
INCIDENTAL HMA SURF.	PG64-22	4.0% @ N DESIGN =70	IL 9.5	MIX "D"

INDEX, STDS, & GENERAL NOTES
FAP 63 (US 24)
SECTION (IZB)I-4
ADAMS COUNTY

Rev. 5-26-10

S U M M A R Y O F Q U A N T I T I E S

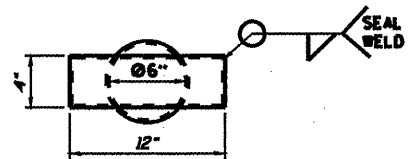
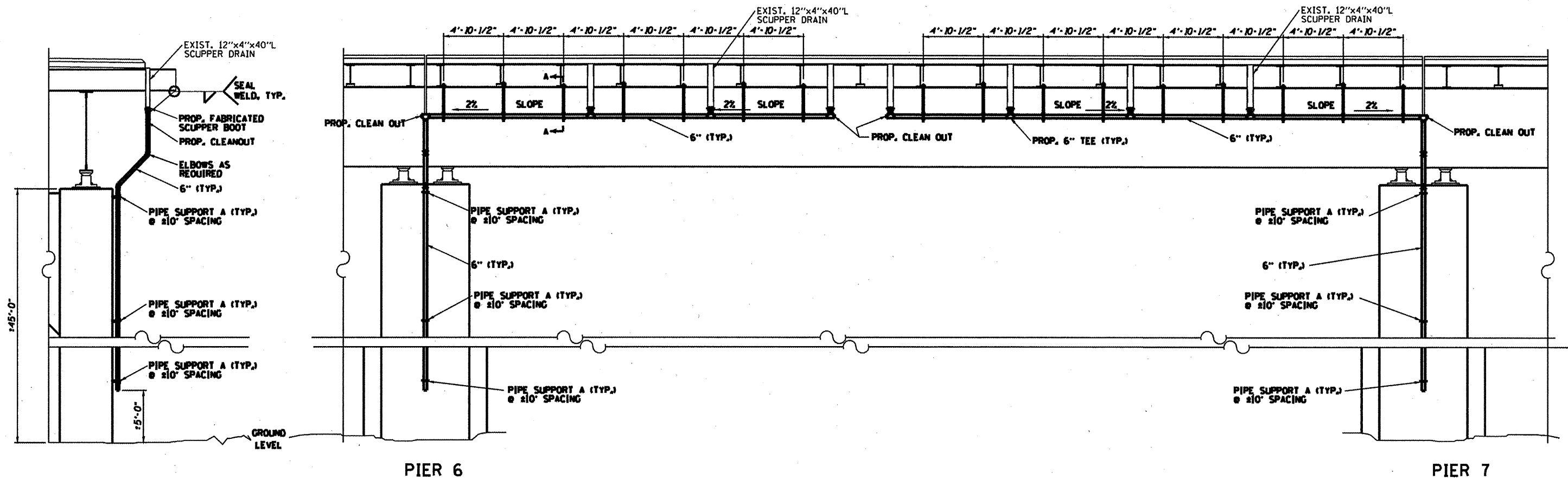
CODE NO.	ITEM	UNIT	100% STATE
			SFTY-2A
			TOTAL QTY
40800020	BITUMINOUS MATERIALS (PRIME COAT)	TON	0.1
40800050	INCIDENTAL HOT-MIX ASPHALT SURFACING	TON	12
44000915	HOT-MIX ASPHALT SURFACE REMOVAL (DECK)	SQ YD	214
67100100	MOBILIZATION	L SUM	1
70100310	TRAFFIC CONTROL AND PROTECTION, STANDARD 701421	L SUM	1
70100320	TRAFFIC CONTROL AND PROTECTION, STANDARD 701422	L SUM	1
X0320887	POLYMER CONCRETE	CU FT	41.4
X0322932	SILICONE JOINT SEALER, 1.5"	FOOT	861
X7200201	WIDTH RESTRICTION SIGNING	L SUM	1
Z0018800	DRAINAGE SYSTEM	L SUM	1

QUANTITIES
FAP 63 (US 24)
SECTION (IZB)I-4
ADAMS COUNTY

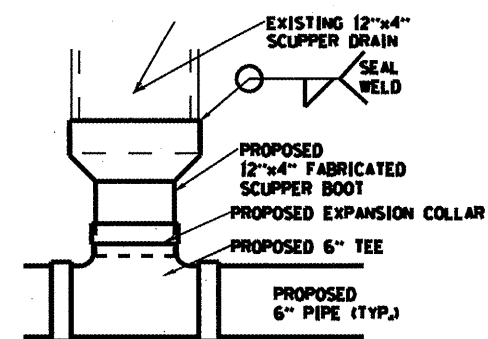
Rev. 5-27-10

CONTRACT NO. 72053			
F.A.P. RYE	SECTION	COUNTY	TOTAL SHEET NO.
63	(12B)-4	ADAMS	84
FED. ROAD DIST. NO. ILLINOIS FED. AID PROJECT			

SPAN 7

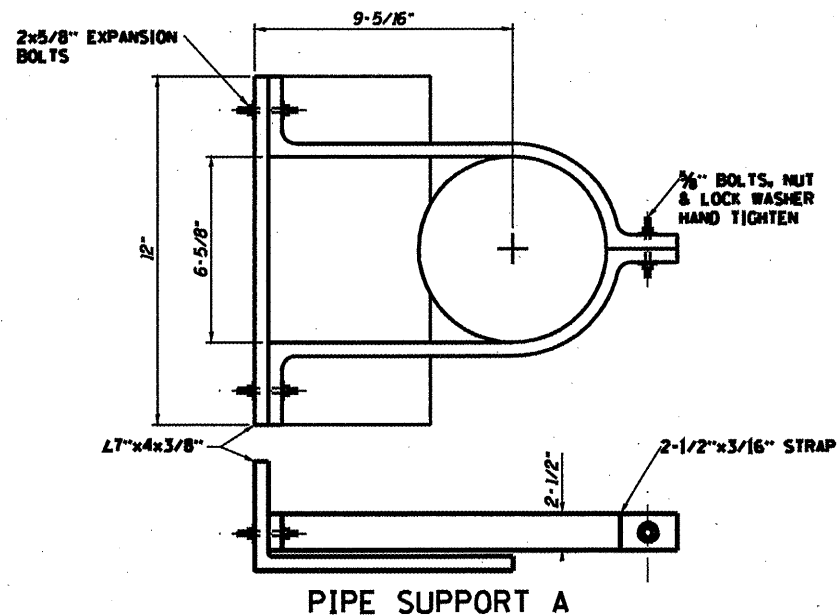


TOP VIEW SCUPPER BOOT

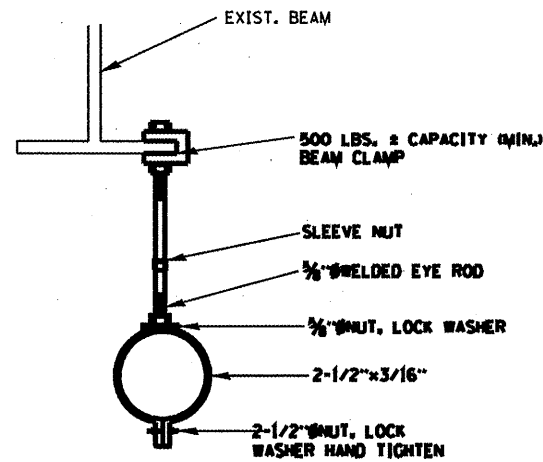


FABRICATED SCUPPER BOOT

CONTRACTOR SHALL FIELD VERIFY DRAINAGE SCUPPER DIMENSIONS BEFORE FABRICATING SCUPPER BOOT



PIPE SUPPORT A



SECTION A-A
PIPE HANGER

NOTES:

1. THE DRAINAGE SYSTEM SHALL BE INSTALLED ON THE NORTH SIDE OF SPAN 7 TO DIVERT WATER FROM THE ROOF OF THE QUINCY WATER PLANT.
2. TO GAIN ACCESS TO THE WATER PLANT PREMISES CONTACT ADAM BARNARD OR PAT MURRY AT (217)228-4590.
3. ALL EXTERIOR SURFACES OF THE PIPE AND FITTINGS SHALL BE THE LIGHT GRAY MUNSSELL JOY 7/1 LIGHT GRAY.
4. PIPE HANGERS SHALL BE PROVIDED ON ALL HORIZONTAL PIPES AT EACH TEE, ELBOW, OR CHANGE IN DIRECTION AND AT THE INTERMEDIATE POINTS NOT MORE THAN 5'-0" ON CENTERS.
5. THE CONTRACTOR MAY USE ALTERNATE PIPE HANGERS, THE PIPE HANGERS SHALL HAVE A LOAD CAPACITY OF NOT LESS THAN 500 LBS. AND SHALL BE DESIGNED SO AS NOT TO APPLY EXCESSIVE COMPRESSIVE STRESS TO THE PIPE. ALTERNATE PIPE HANGER DESIGNS MUST BE APPROVED BY THE ENGINEER PRIOR TO USE.

REVISIONS	
NAME	DATE

ILLINOIS DEPARTMENT OF TRANSPORTATION
BRIDGE DRAINAGE SYSTEM
FAP 63 (U.S. 24)
SECTION (12B)-4
ADAMS COUNTY

SCALE: VERT.
HORIZ.
DATE 05/24/2010

DRAWN BY TDS
CHECKED BY SWB

Added sheet 5-26-10