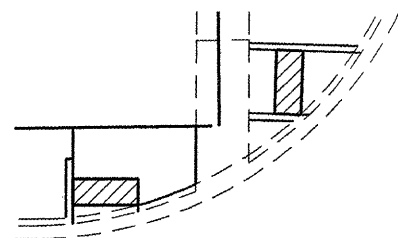
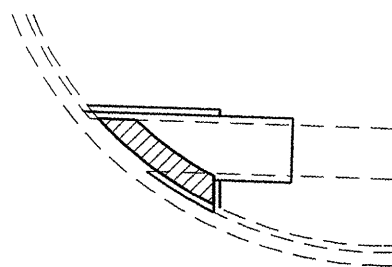


 DETECTABLE WARNING

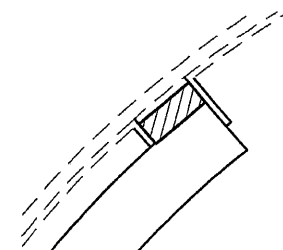
NW QUAD



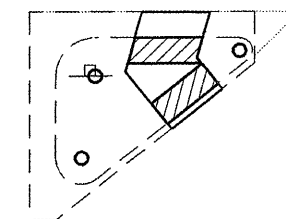
NE QUAD



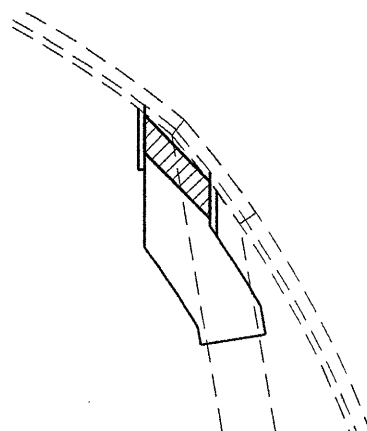
SE QUAD



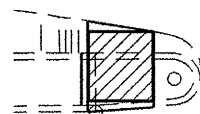
SE ISLAND



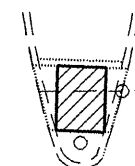
SW QUAD



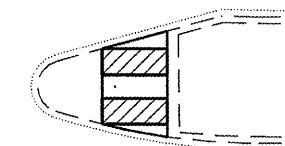
WEST MEDIAN



NORTH MEDIAN



EAST MEDIAN



NOTE: SEE SCHEDULE OF QUANTITIES FOR DIMENSIONS

FILE NAME = e:\pwork\PKIDOT\LAUHL\INRL\018347\0572064-shr-details.dgn	USER NAME = laughtin1	DESIGNED -	REVISED -	STATE OF ILLINOIS DEPARTMENT OF TRANSPORTATION	DETECTABLE WARNINGS FAP 75 (IL 29)				F.A.P. RTE.	SECTION	COUNTY	TOTAL SHEETS	SHEET NO.		
		DRAWN -	REVISED -		SCALE:	SHEET NO.	OF	SHEETS	STA.	TO STA.	75	(22)N,I	CHRISTIAN	8	7
		CHECKED -	REVISED -												
		DATE -	REVISED -												
		PLOT SCALE = 14.3786' / IN.													
		PLOT DATE = Mar-19-2010 02:39:28PM													
											CONTRACT NO. 72D64		ILLINOIS FED. AID PROJECT		