

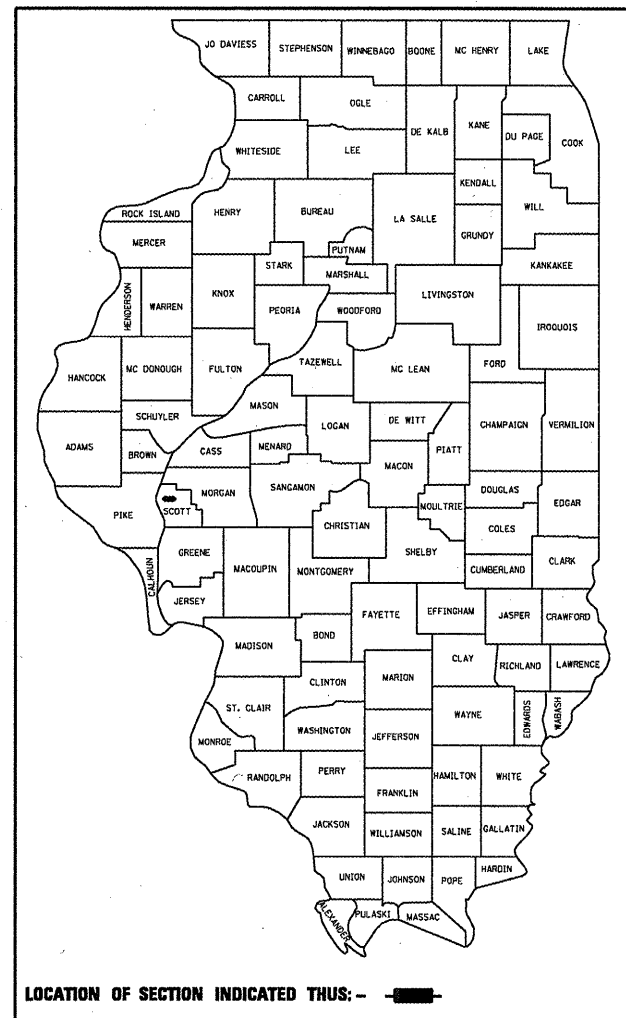
STATE OF ILLINOIS
DEPARTMENT OF TRANSPORTATION
DIVISION OF HIGHWAYS

PROPOSED
HIGHWAY PLANS

FAI ROUTE 72 (I-72)
SECTION 86-91
PROJECT ACHSIP-072-1(081)046
SHOULDER RESURFACING AND RUMBLE STRIPS
SCOTT COUNTY

F.A.I. RTE.	SECTION	COUNTY	TOTAL SHEETS	SHEET NO.
72	86-91	SCOTT	6	1
		ILLINOIS	CONTRACT NO. 72D69	

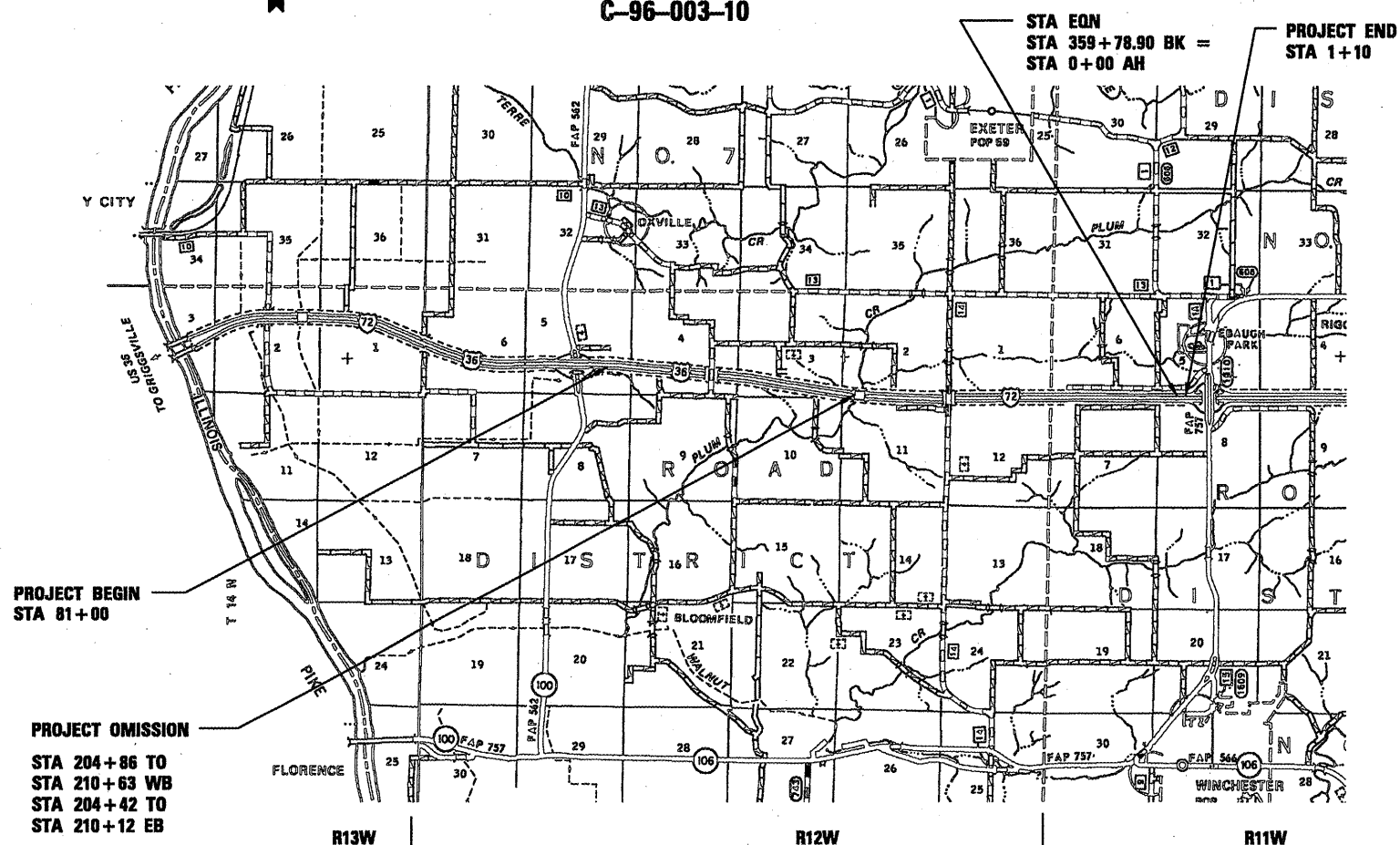
D-96-003-10



FOR INDEX OF SHEETS, SEE SHEET NO. 2



C-96-003-10



STA EQN
STA 359+78.90 BK =
STA 0+00 AH

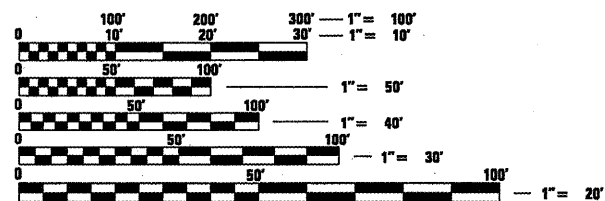
PROJECT END
STA 1+10

PROJECT BEGIN
STA 81+00

PROJECT OMISSION
STA 204+86 TO
STA 210+63 WB
STA 204+42 TO
STA 210+12 EB

MAINLINE GROSS AND NET LENGTH = 27,990' = 5.30 MI

ADT 6,200
%MU + % SU = 25%



FULL SIZE PLANS HAVE BEEN PREPARED USING STANDARD ENGINEERING SCALES. REDUCED SIZED PLANS WILL NOT CONFORM TO STANDARD SCALES. IN MAKING MEASUREMENTS ON REDUCED PLANS, THE ABOVE SCALES MAY BE USED.

J.U.L.I.E.
JOINT UTILITY LOCATION INFORMATION FOR EXCAVATION
1-800-892-0123
OR 811

PROJECT ENGINEER JOHN NEGANGARD 217-782-6990
PROJECT MANAGER VINCE MADONIA 217-785-9046

CONTRACT NO. 72D69

STATE OF ILLINOIS
DEPARTMENT OF TRANSPORTATION
DIVISION OF HIGHWAYS

SUBMITTED *March 23 20 10*
Ron J. Dicht
DEPUTY DIRECTOR OF HIGHWAYS, REGION ENGINEER

May 7 20 10
Scott E. Stitt, P.E. / s
acting ENGINEER OF DESIGN AND ENVIRONMENT

May 7 20 10
Christine M. Reed / s
DIRECTOR OF HIGHWAYS, CHIEF ENGINEER

PRINTED BY THE AUTHORITY
OF THE STATE OF ILLINOIS

Station Range			Length	Inside	Outside	2" HMA	2"	Bituminous	Shoulder
			(ft)	Shoulder	Shoulder	Surface	HMA	Prime	Rumble
Mainline			(ft)	(ft)	(ft)	Removal	Shoulder	Coat	Strips
						(SY)	(T)	(T)	(ft)
81+00	204+42	EB	12,342.0	6	10	21,941	2,457	8.34	24,684
210+12	359+79	EB	14,966.9	6	10	26,608	2,980	10.11	29,934
0+00	1+10	EB	110.0	6	10	196	22	0.07	220
81+00	204+86	WB	12,386.0	6	10	22,020	2,466	8.37	24,772
210+63	359+79	WB	14,915.9	6	10	26,517	2,970	10.08	29,832
0+00	1+10	WB	110.0	6	10	196	22	0.07	220

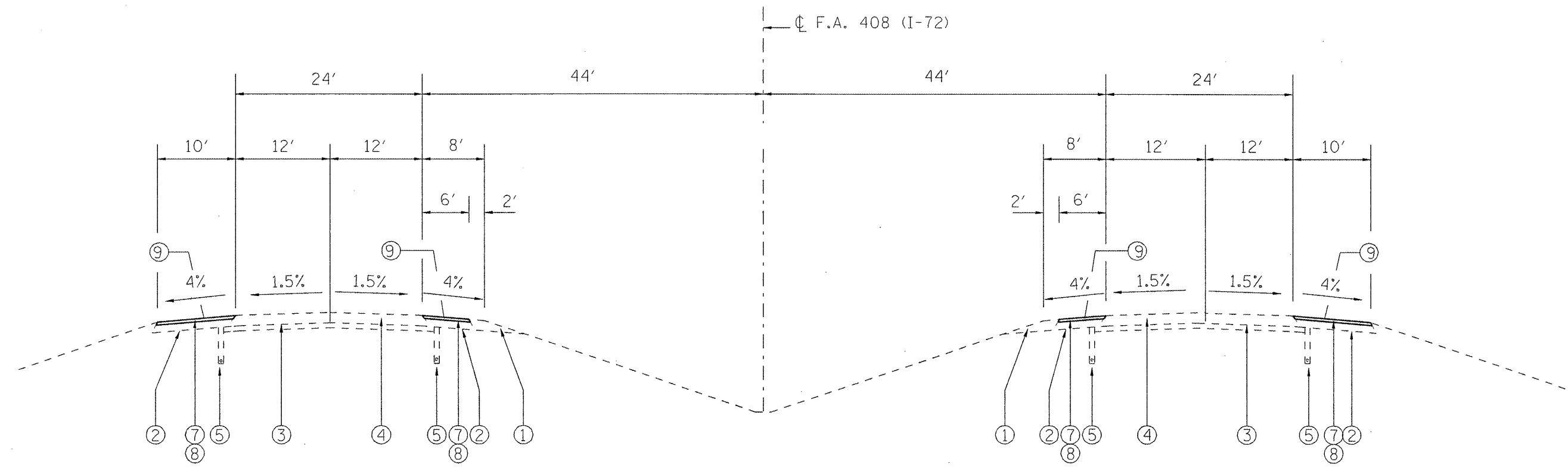
Shoulders									
1+90	19+25	C	1,735.0	4	6	1,928	216	0.73	0
0+00	15+00	D	1,500.0	4	6	1,667	187	0.63	0

101,071 11,320 38 109,662

Pavement Marking

Mainline		Length	Edge	Center
		(ft)	(ft)	(ft)
81+00	359+79.8	27,879.8	111,519.2	13,939.9
0+00	1+10	110.0	440.0	55.0
Ramp C		1,735.0	3,470.0	
Ramp D		1,500.0	3,000.0	
			118,429.2	13,994.9
Total			132,424.1	

- ① EXISTING AGGREGATE SHOULDERS TYPE A
- ② EXISTING 8" STABILIZED SHOULDER STANDARD 2237
- ③ EXISTING 4" STABILIZED SUB-BASE ON EARTH BASE
- ④ EXISTING 8" C.R.P.C.C. PAVM'T STANDARD 2224
- ⑤ EXISTING SUB-SURFACE DRAIN STANDARD 2327
- ⑥ EXISTING 8" STANDARD REINF. P.C. CONC. PAVEMENT
- ⑦ PROPOSED HMA SURFACE REMOVAL, 1 1/2"
- ⑧ PROPOSED HMA SHOULDERS, 1 1/2"
- ⑨ PROPOSED RUMBLE STRIP, PER STANDARD 642001-01



STA 81+00 TO STA 359+78.90

STA 0+00 TO STA 1+10

*STATION EQUATION BRIDGE OMISSION

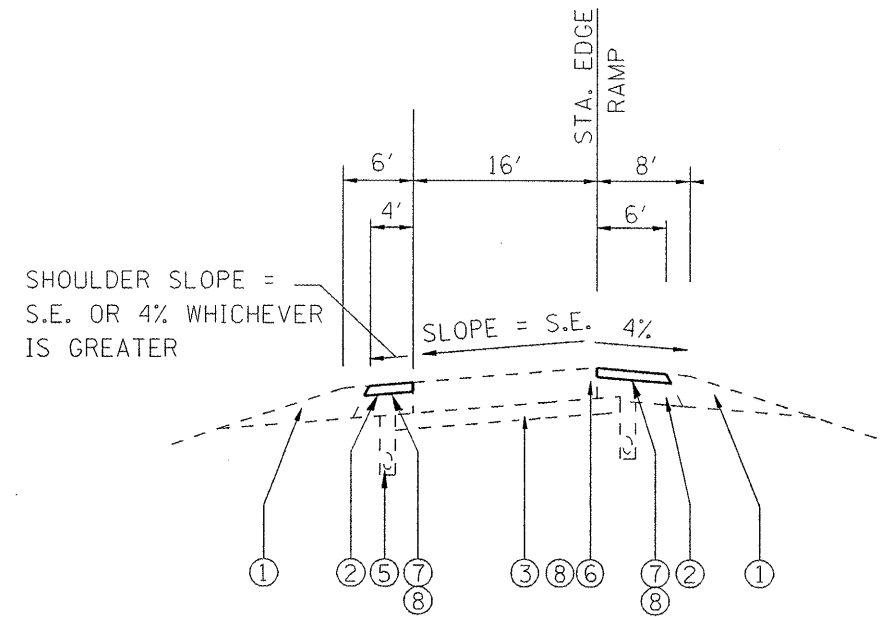
STA. 359+78.90 BK = STA. 205+86.04 TO STA. 209+63.14(WB)
 STA. 0+00.00 AH STA. 205+41.84 TO STA. 209+12.14(EB)

BRIDGE APPROACHES

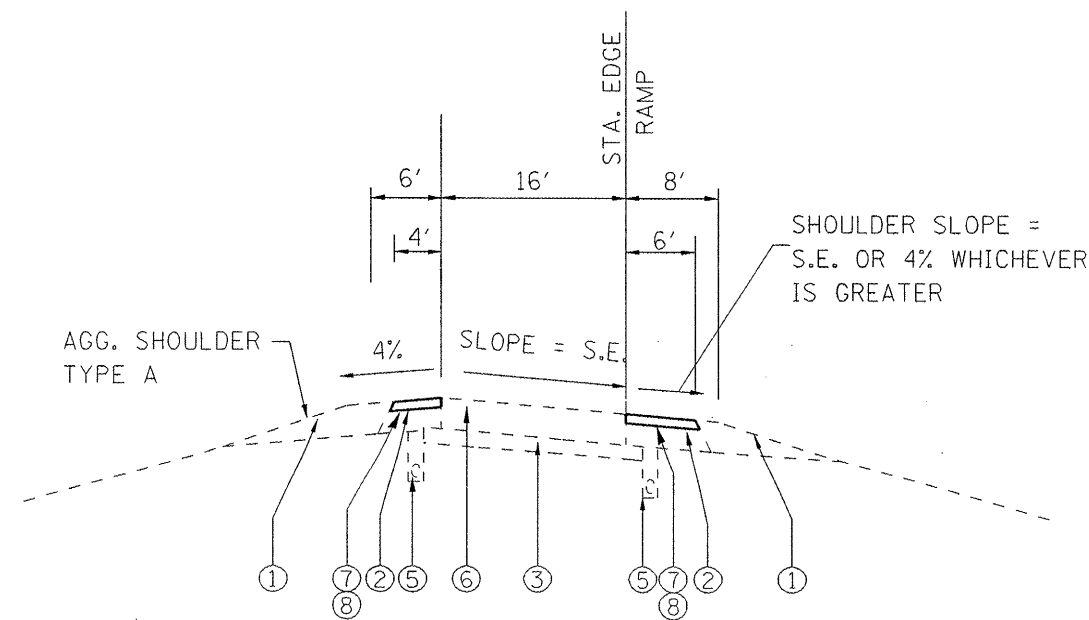
STA. 204+86.04 TO STA. 205+86.04(WB)
 STA. 209+63.14 TO STA. 210+63.14(WB)
 STA. 204+41.84 TO STA. 205+41.84(EB)
 STA. 209+12.14 TO STA. 210+12.14(EB)

FILE NAME = c:\pwork\p\WIDOT\LAUGHLIN\RL\d0187297	USER NAME = laughtl	DESIGNED -	REVISED -	STATE OF ILLINOIS DEPARTMENT OF TRANSPORTATION	TYPICAL SECTION		F.A.I. RTE.	SECTION	COUNTY	TOTAL SHEETS	SHEET NO.
	72069-shr-typical.dgn	DRAWN -	REVISED -		72	86-9I	SCOTT	5	5		
PLOT SCALE = 28.0000' / IN.	CHECKED -	REVISED -	REVISED -	SCALE:	SHEET NO. OF SHEETS	STA.	TO STA.	CONTRACT NO. 72069			
PLOT DATE = Mar-23-2010 01:40:35PM	DATE -	REVISED -	REVISED -	ILLINOIS FED. AID PROJECT							

- ① EXISTING AGGREGATE SHOULDERS TYPE A
- ② EXISTING 8" STABILIZED SHOULDER STANDARD 2237
- ③ EXISTING 4" STABILIZED SUB-BASE ON EARTH BASE
- ④ EXISTING 8" C.R.P.C.C. PAVM'T STANDARD 2224
- ⑤ EXISTING SUB-SURFACE DRAIN STANDARD 2327
- ⑥ EXISTING 8" STANDARD REINF. P.C. CONC. PAVEMENT
- ⑦ PROPOSED HMA SURFACE REMOVAL, 1 1/2"
- ⑧ PROPOSED HMA SHOULDERS, 1 1/2"
- ⑨ PROPOSED RUMBLE STRIP, PER STANDARD 642001-01



TYPICAL CROSS SECTION OF RAMP
SUPER ELEVATED LEFT



TYPICAL CROSS SECTION OF RAMP
SUPER ELEVATED RIGHT

RAMP C (NE) AND RAMP D (SE)
STA 1+90 TO STA 19+25 (RAMP C)
STA 0+00 TO STA 15+00 (RAMP D)

FILE NAME =	USER NAME = laughlinr1	DESIGNED -	REVISED -	STATE OF ILLINOIS DEPARTMENT OF TRANSPORTATION	TYPICAL SECTION			F.A.I. RTE.	SECTION	COUNTY	TOTAL SHEETS	SHEET NO.
es:\pwwork\pwwid\laughlinr1\08187297\672069-shr-typic01.dgn		DRAWN -	REVISED -		72	85-9I	SCOTT	6	6			
PLOT SCALE = 20.0000' / IN.		CHECKED -	REVISED -		SCALE: SHEET NO. OF SHEETS STA. TO STA.			CONTRACT NO. 72069				
PLOT DATE = Mar-23-2010 01:40:37PM		DATE -	REVISED -		ILLINOIS FED. AID PROJECT							