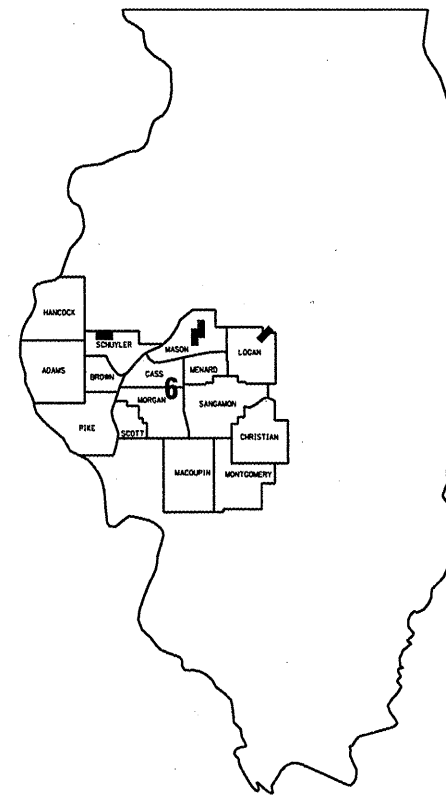


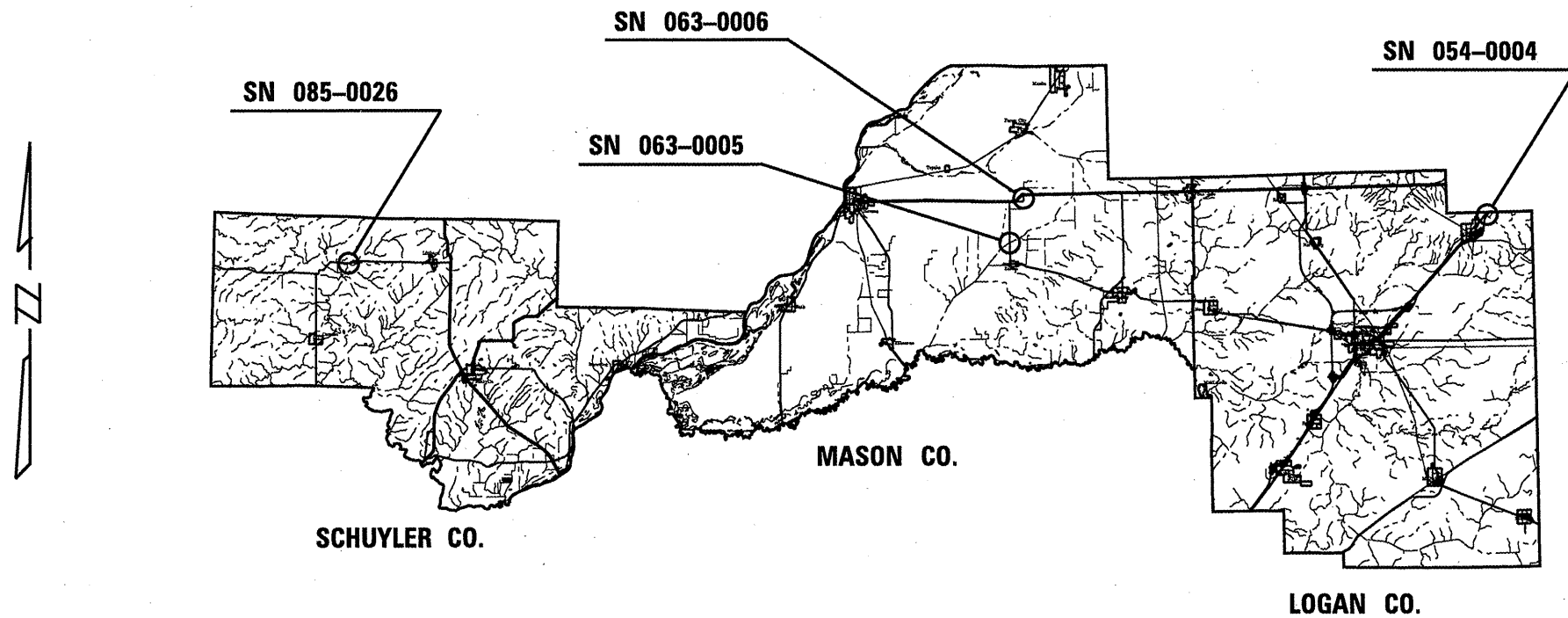
FOR INDEX OF SHEETS AND HIGHWAY
STANDARDS, SEE SHEET 2.

STATE OF ILLINOIS
DEPARTMENT OF TRANSPORTATION
DIVISION OF HIGHWAYS

**PROPOSED
HIGHWAY PLANS
VARIOUS ROUTES
SECTION D6 RIPRAP PROTECTION 2010
VARIOUS COUNTIES
C96-005-10 / D96-005-10**



LOCATION OF SECTION INDICATED THUS: ■



STATE OF ILLINOIS
DEPARTMENT OF TRANSPORTATION
DIVISION OF HIGHWAYS

SUBMITTED March 31 20 10

Reg. Z. Dack
DEPUTY DIRECTOR OF HIGHWAYS, REGION FOUR ENGINEER

May 7 20 10

Scott E. Stitt, P.E.
acting ENGINEER OF DESIGN AND ENVIRONMENT

May 7 20 10

Christine M. Reed
DIRECTOR, DIVISION OF HIGHWAYS

J. U. L. I. E.
JOINT UTILITY LOCATION INFORMATION FOR EXCAVATION
1-800-892-0123

BRIDGE MAINTENANCE ENGINEER: STEVE BERAN
PHONE: (217) 785-9290
BRIDGE INSPECTION ENGINEER: DAVE COPENBARGER
PHONE: (217) 785-5306

CONTRACT NO. 72D71

SEE LOCATION MAP ON PAGE 4 FOR EXACT BRIDGE LOCATIONS

INDEX OF SHEETS

- 1 COVER SHEET
- 2 INDEX, STANDARDS, & GENERAL NOTES
- 3 QUANTITIES
- 4 LOCATION MAP
- 5-6 SN 063-0006 DETAILS
- 7-8 SN 063-0005 DETAILS
- 9-10 SN 054-0004 DETAILS
- 11-12 SN 085-0026 DETAILS

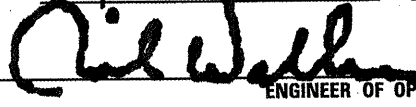
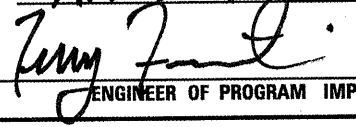

STANDARDS

- 701001-02
- 701006-03
- 701101-02
- 701106-02
- 701201-03
- 701301-03
- 701901-01

GENERAL NOTES:

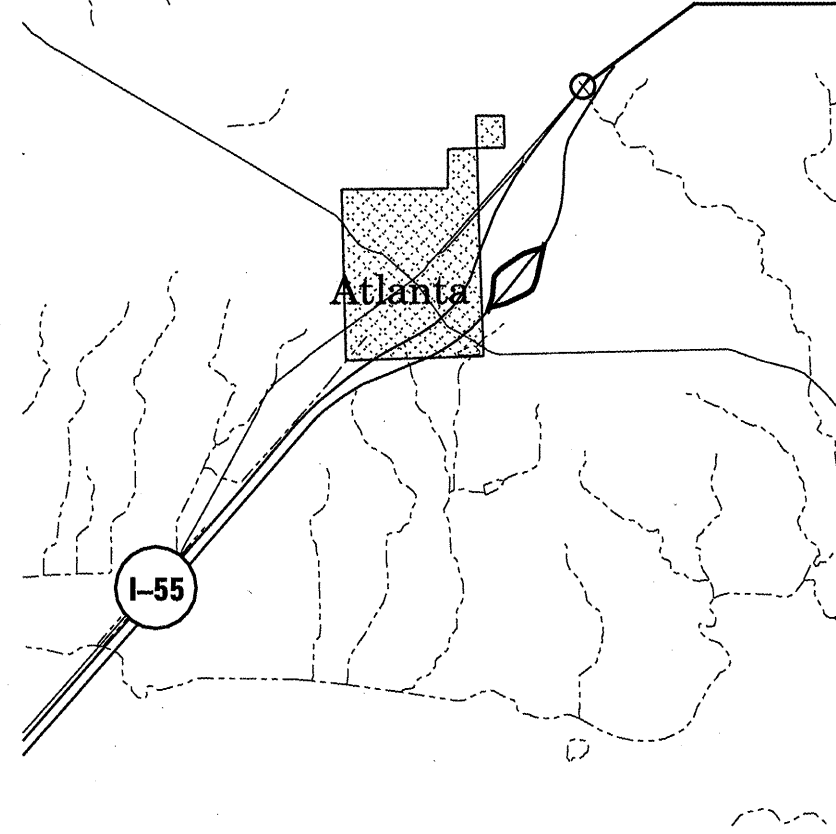
PLAN DIMENSIONS AND DETAILS RELATIVE TO EXISTING PLANS ARE SUBJECT TO NOMINAL CONSTRUCTION VARIATIONS. THE CONTRACTOR SHALL FIELD VERIFY EXISTING DIMENSIONS AND DETAILS AFFECTING NEW CONSTRUCTION AND MAKE NECESSARY APPROVED ADJUSTMENTS PRIOR TO CONSTRUCTION OR ORDERING OF MATERIALS. SUCH VARIATIONS SHALL NOT BE A CAUSE FOR ADDITIONAL COMPENSATION FOR A CHANGE IN THE SCOPE OF WORK, HOWEVER, THE CONTRACTOR WILL BE PAID FOR THE QUANTITY ACTUALLY FURNISHED AT THE UNIT PRICE BID FOR THE WORK.

TOP SURFACE OF RIPRAP SHALL BE FLUSH WITH EXISTING GRADE. THE COST FOR REMOVAL AND DISPOSAL OF EARTH NECESSARY FOR RIPRAP INSTALLATION SHALL BE INCLUDED IN THE BID PRICE FOR STONE RIPRAP, CLASS A5 OR STONE DUMPED RIPRAP, CLASS A4.

STATE OF ILLINOIS DEPARTMENT OF TRANSPORTATION DIVISION OF HIGHWAYS DISTRICT 6		
EXAMINED	April 1	20 10
		ENGINEER OF OPERATIONS
EXAMINED	APRIL 1	20 10
		ENGINEER OF PROGRAM IMPLEMENTATION
EXAMINED	April 2	20 10
		ENGINEER OF PROGRAM DEVELOPMENT

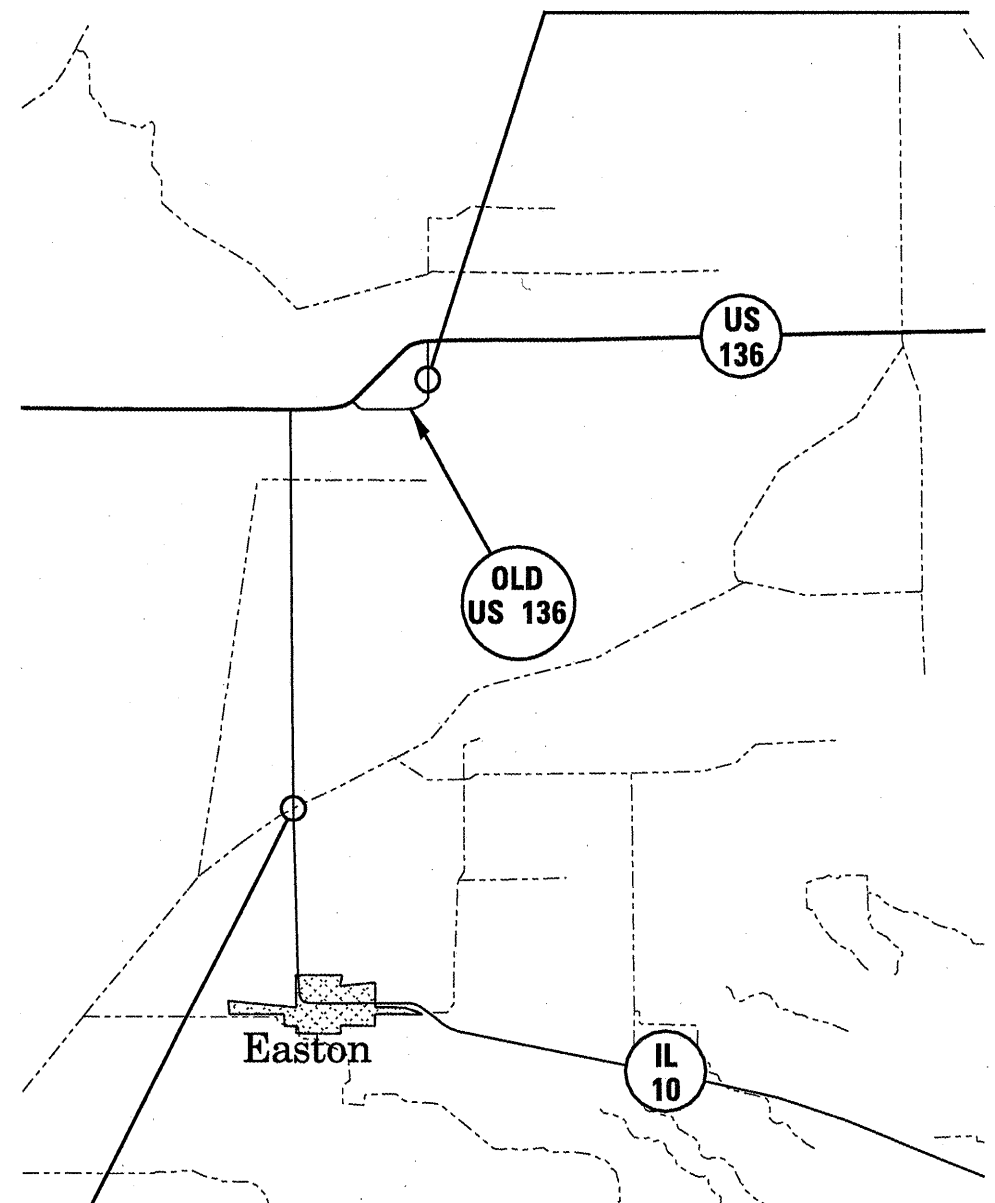
INDEX, STDS, & GENERAL NOTES
VARIOUS ROUTES
D6 RIPRAP PROTECTION 2010
VARIOUS COUNTIES

SN 054-0004
FAS 1773 (I-55 WFR)
OVER CLEAR CREEK
1.7 MILES NORTH OF
ATLANTA INTERCHANGE

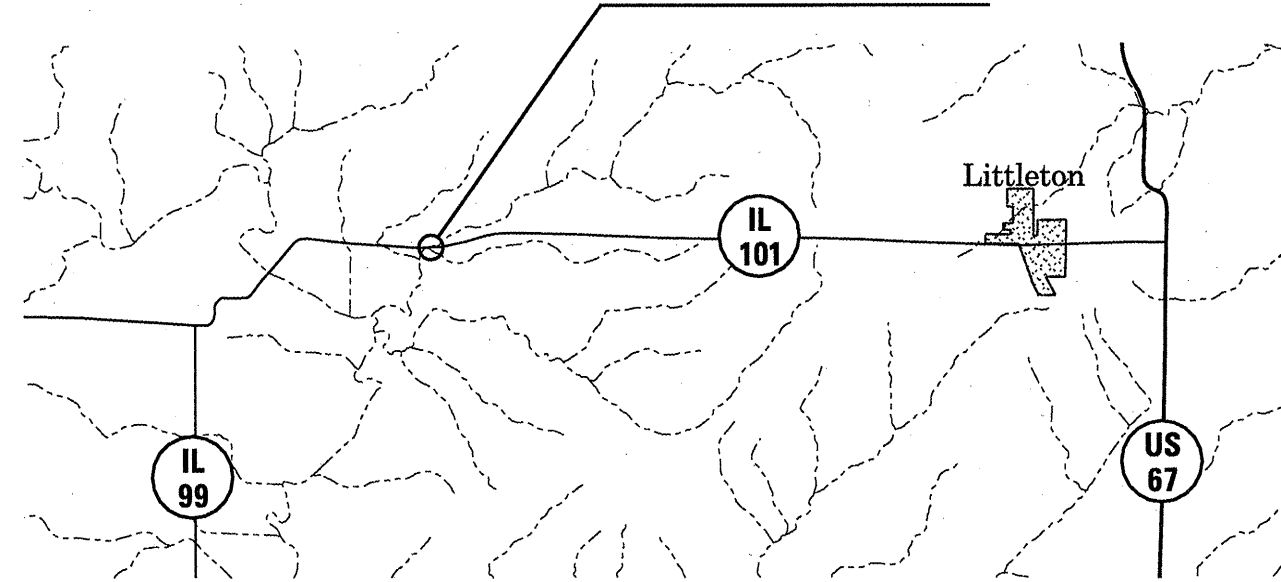


CONTRACT: 72D71
SHEET 4 OF 12

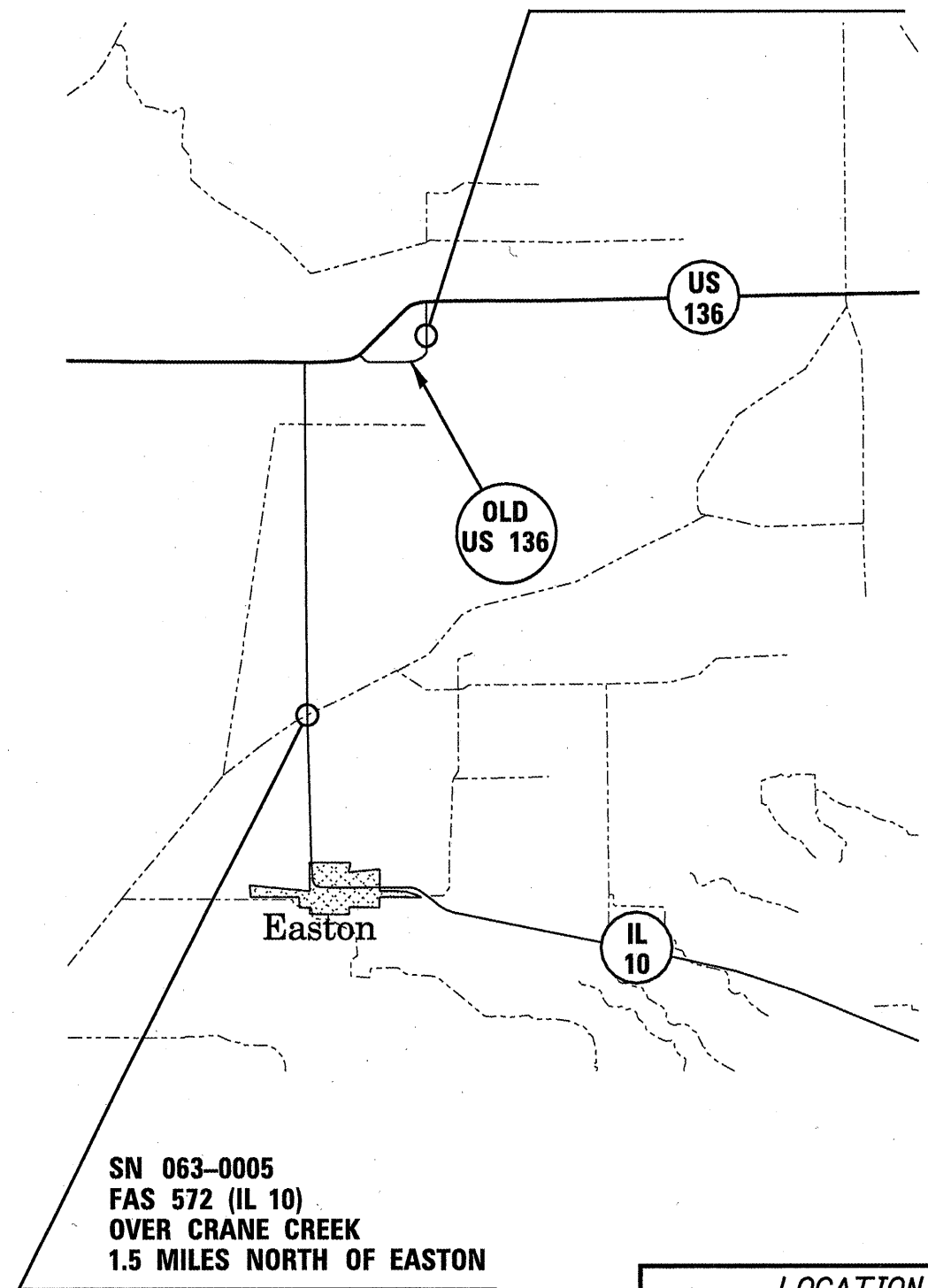
SN 063-0006
SBI 122 (OLD US 136)
OVER COUNTY DITCH
1.2 MILES EAST OF IL 10



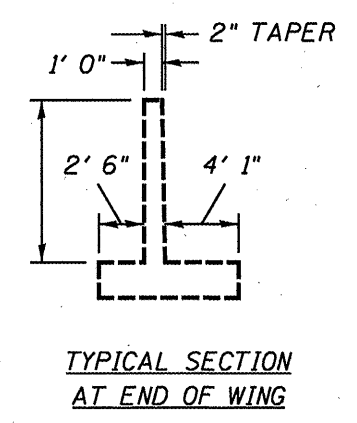
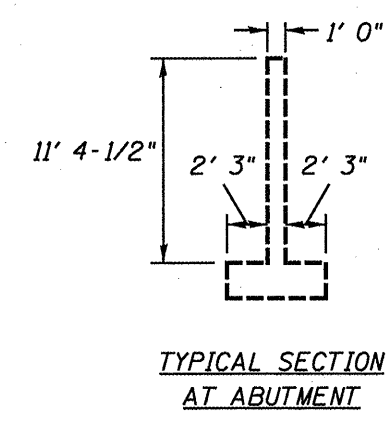
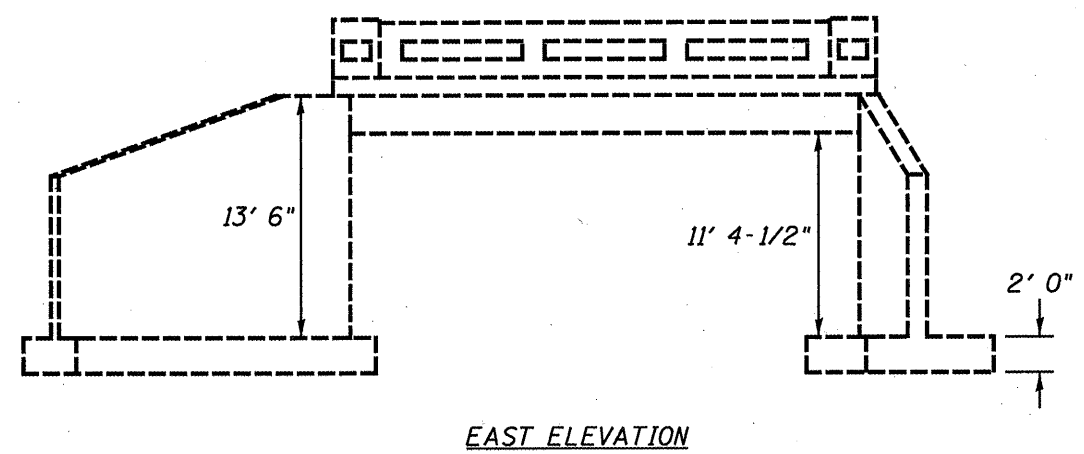
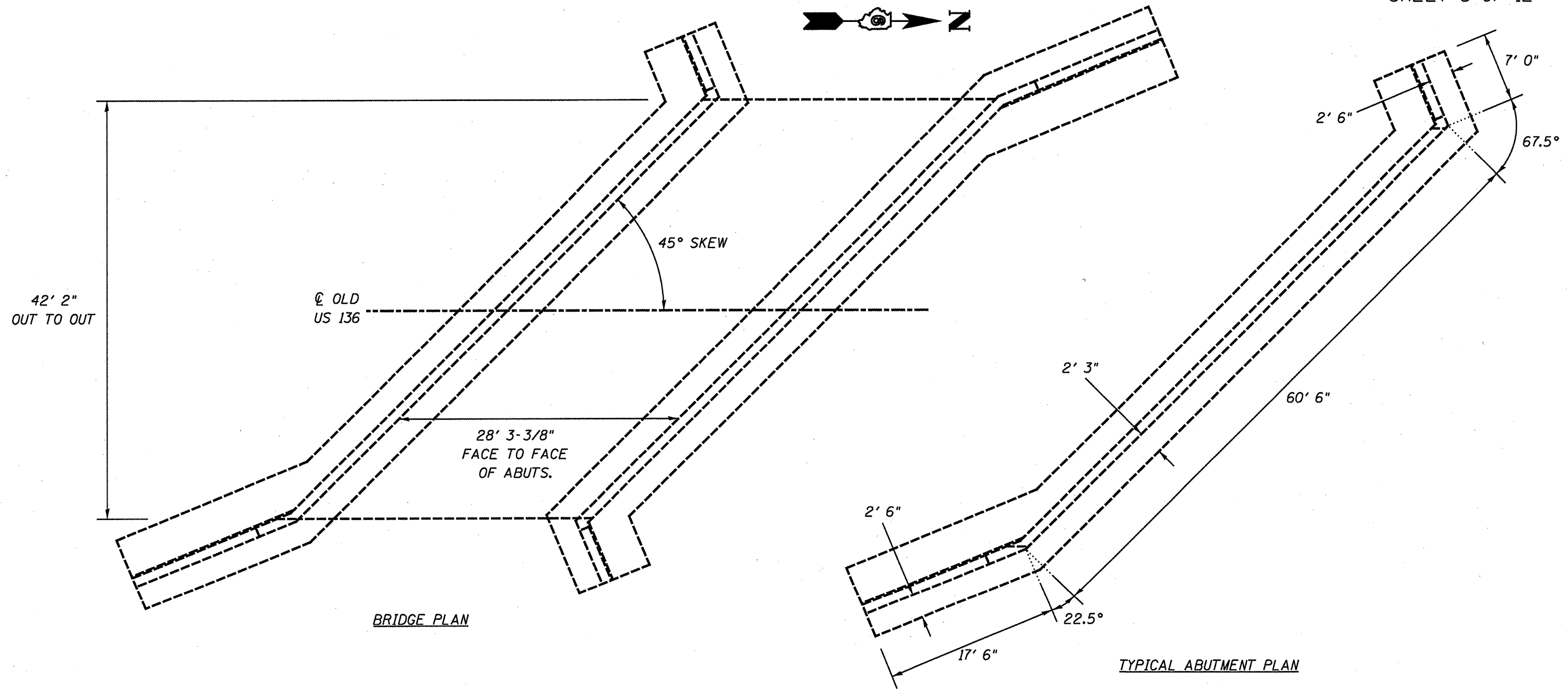
SN 085-0026
FAP 713 (IL 101)
OVER HONEY BROOK
2.4 MILES EAST OF IL 99



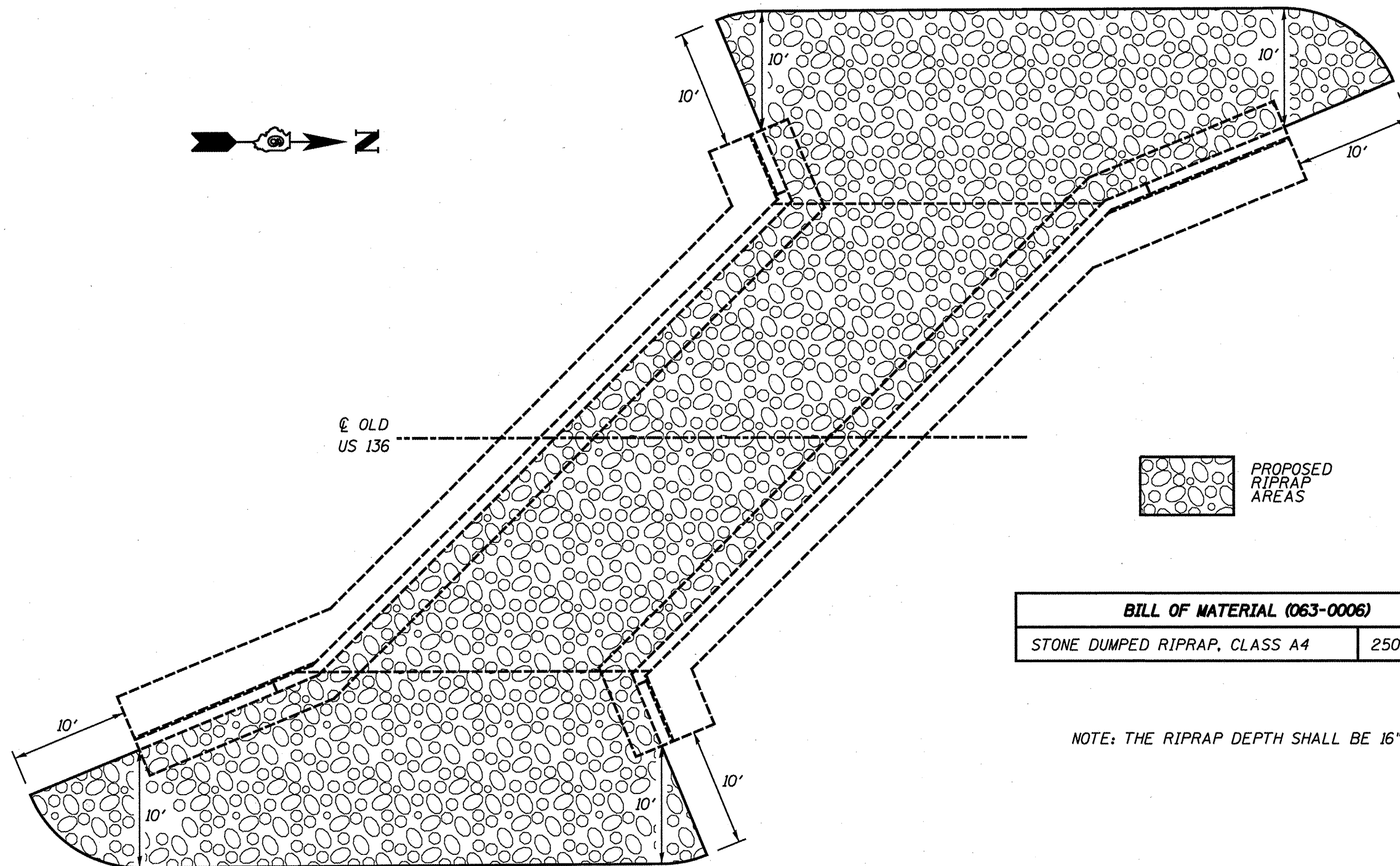
SN 063-0005
FAS 572 (IL 10)
OVER CRANE CREEK
1.5 MILES NORTH OF EASTON



LOCATION MAPS
VARIOUS ROUTES
D6 RIPRAP PROTECTION 2010
VARIOUS COUNTIES



063-0006 PLAN & ELEVATION
SBI 122 (OLD US 136)
D6 RIPRAP PROTECTION 2010
MASON COUNTY



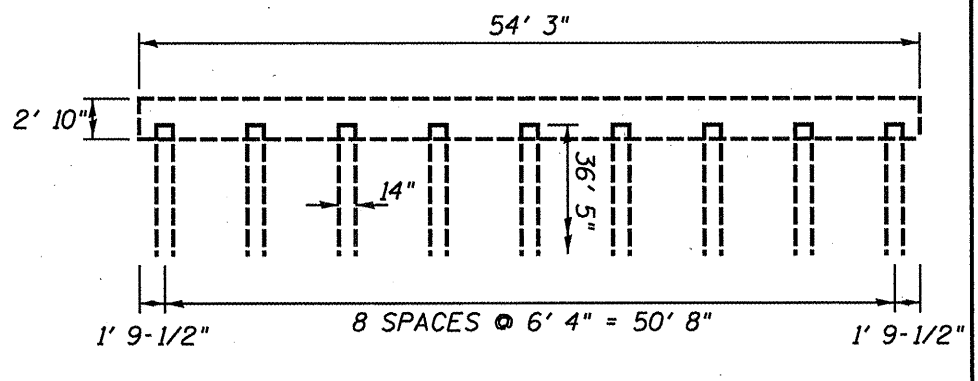
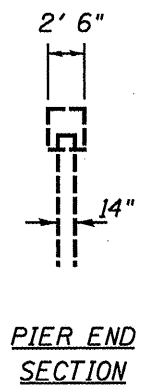
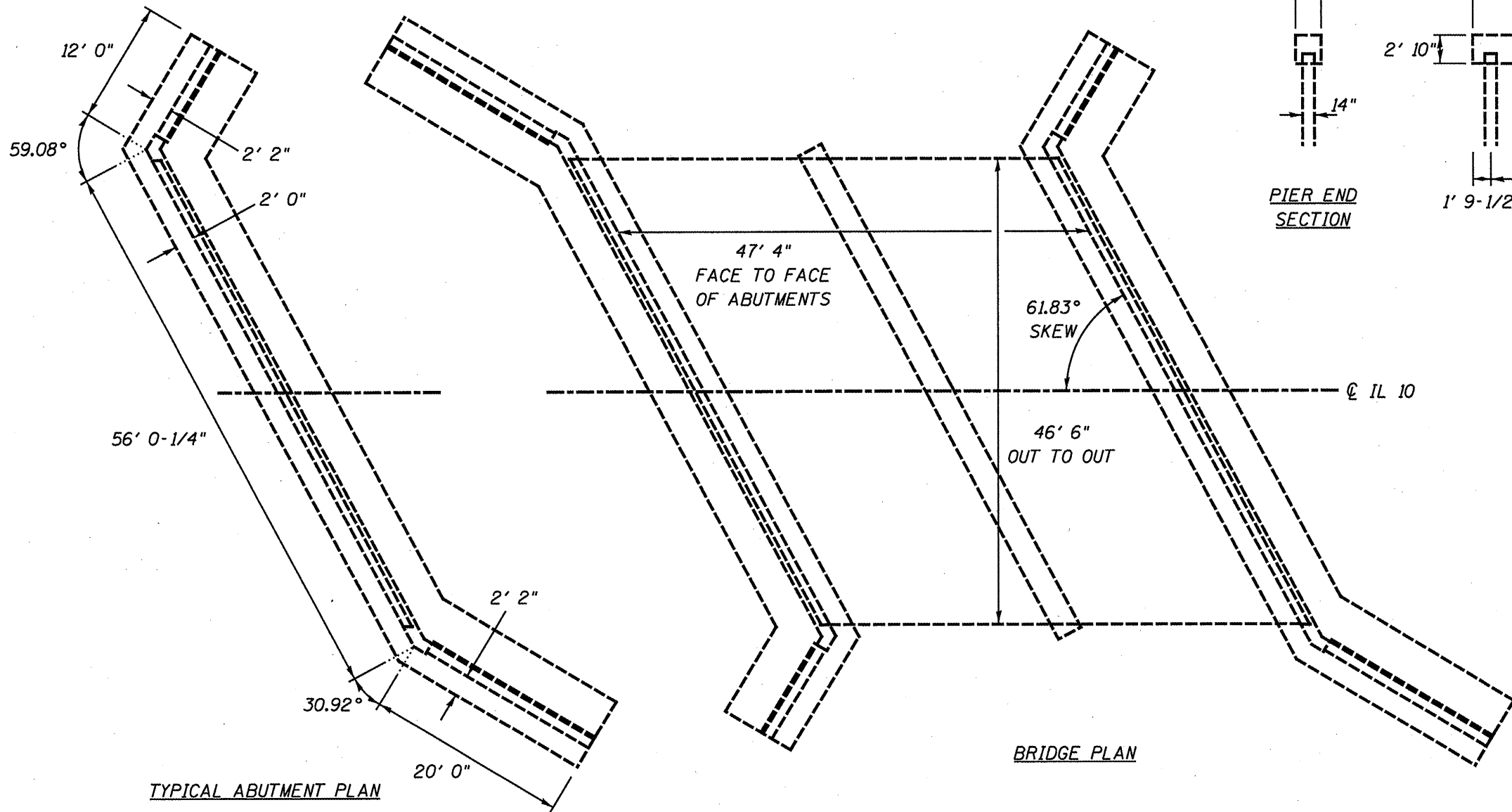
 PROPOSED RIPRAP AREAS

BILL OF MATERIAL (063-0006)	
STONE DUMPED RIPRAP, CLASS A4	250 TONS

NOTE: THE RIPRAP DEPTH SHALL BE 16"

BRIDGE PLAN

063-0006 RIPRAP PLAN
SBI 122 (OLD US 136)
D6 RIPRAP PROTECTION 2010
MASON COUNTY

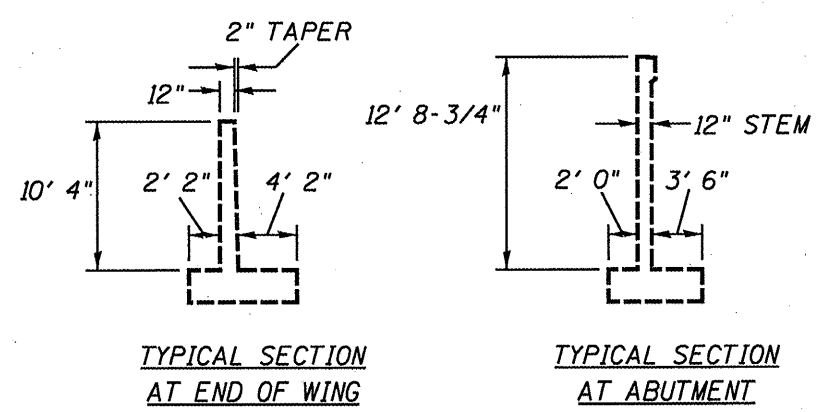


TYPICAL ABUTMENT PLAN

BRIDGE PLAN

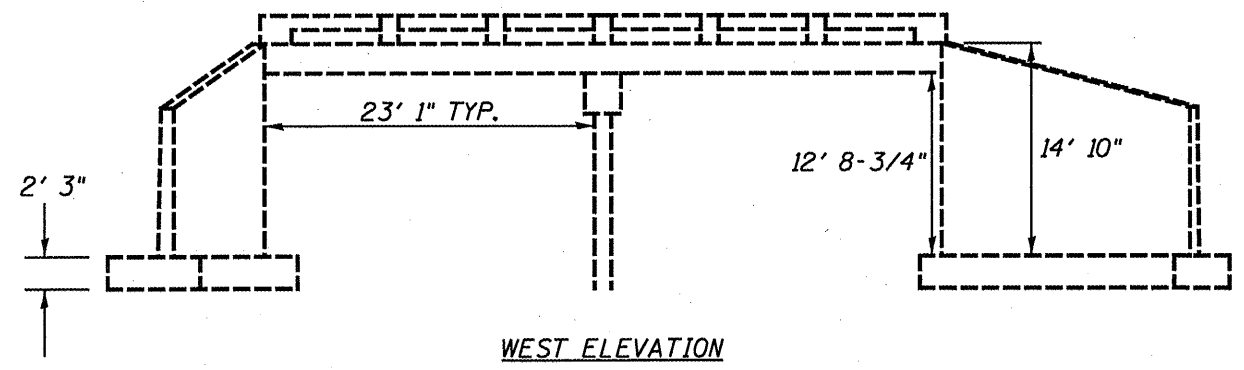
PIER END SECTION

PIER ELEVATION



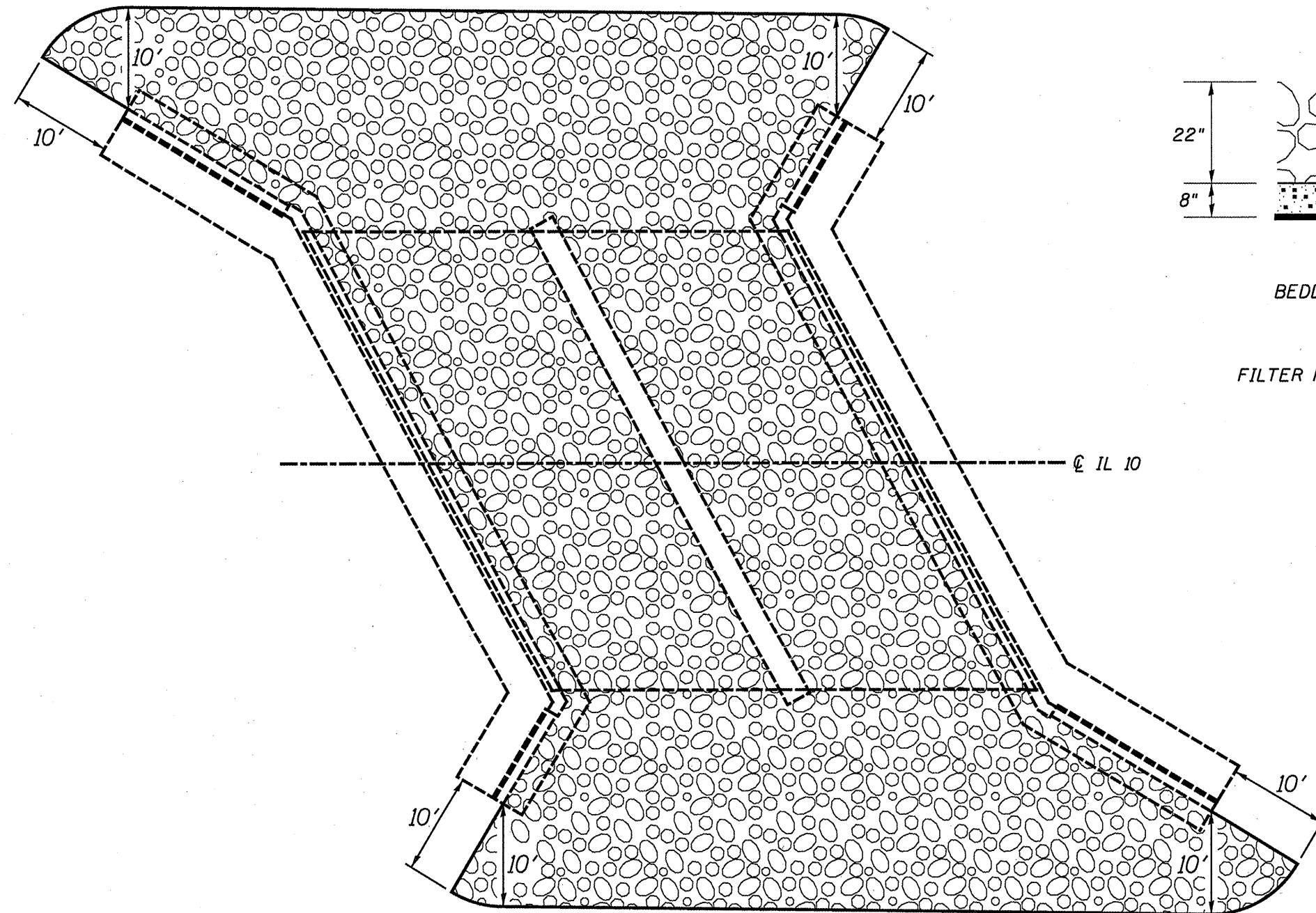
TYPICAL SECTION AT END OF WING

TYPICAL SECTION AT ABUTMENT

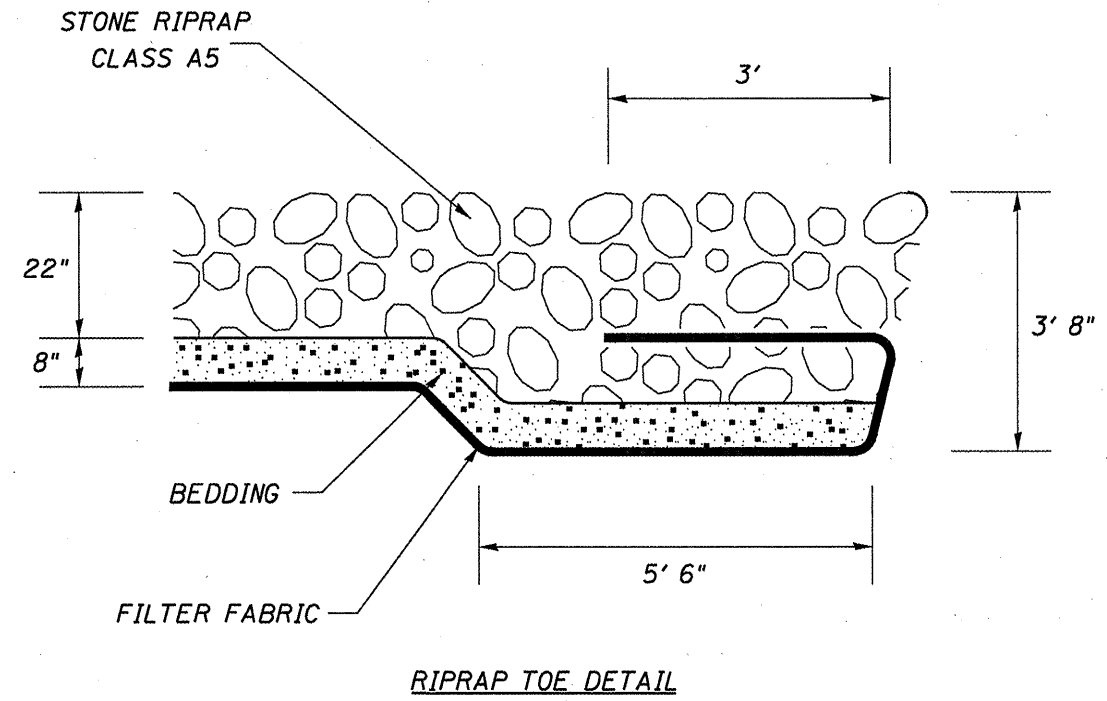


WEST ELEVATION

063-0005 PLAN & ELEVATION
FAS 572 (IL 10)
D6 RIPRAP PROTECTION 2010
MASON COUNTY



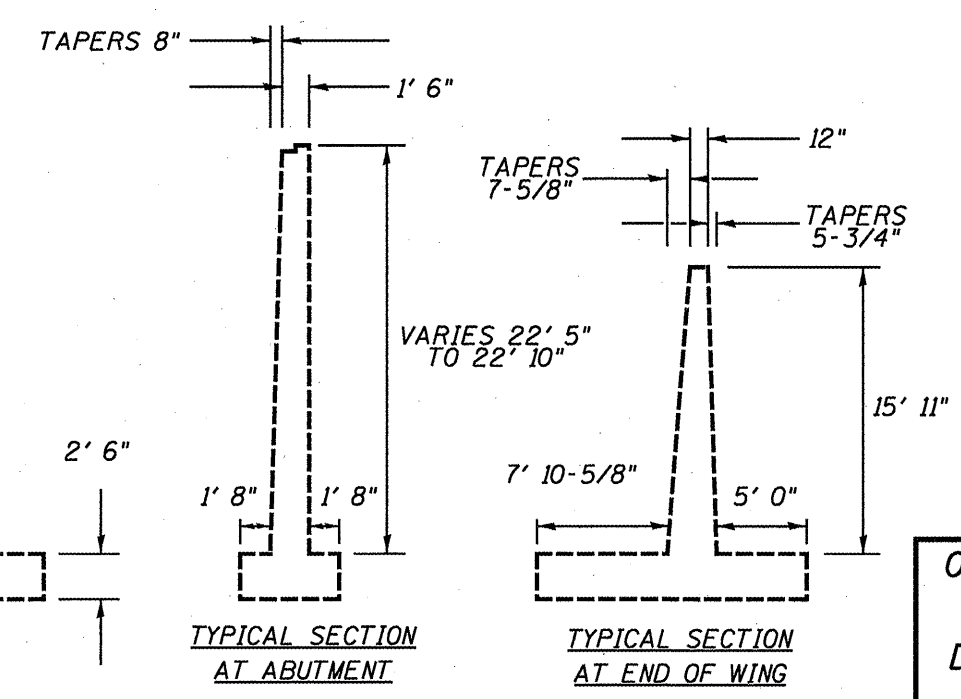
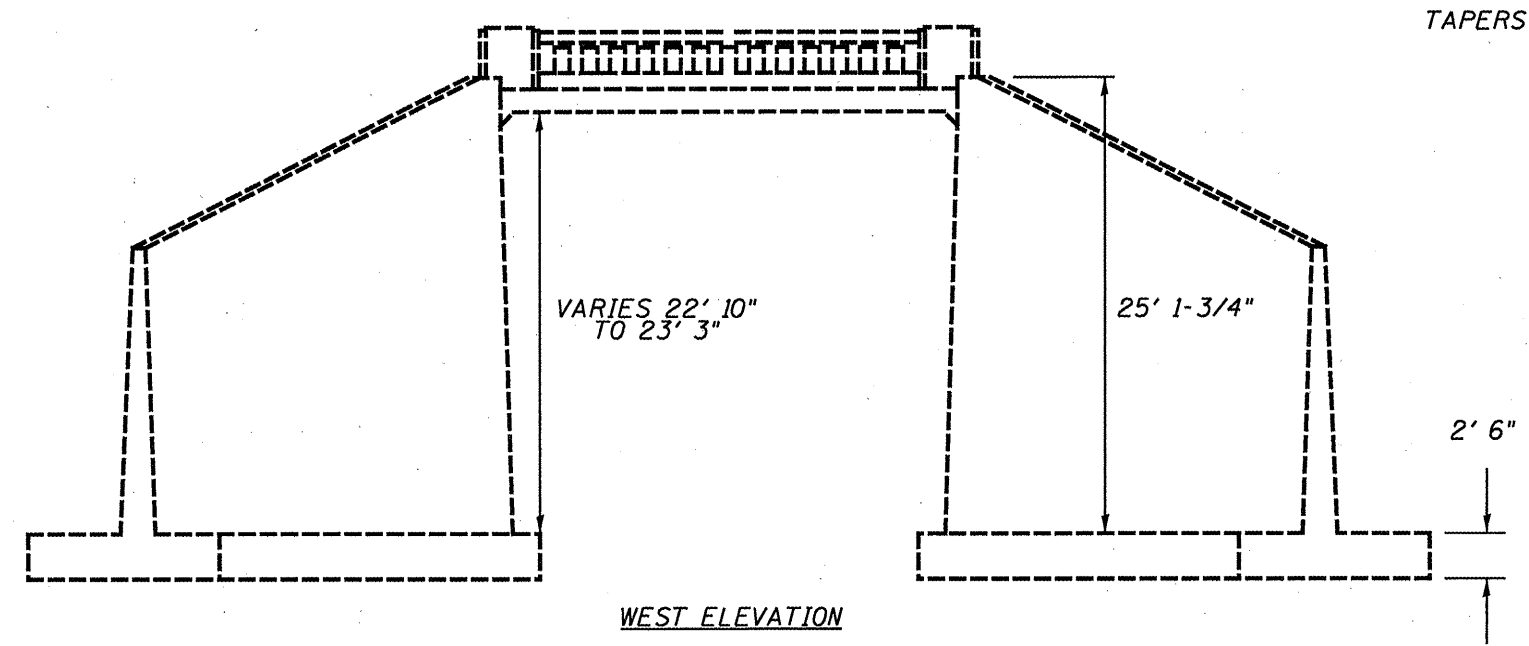
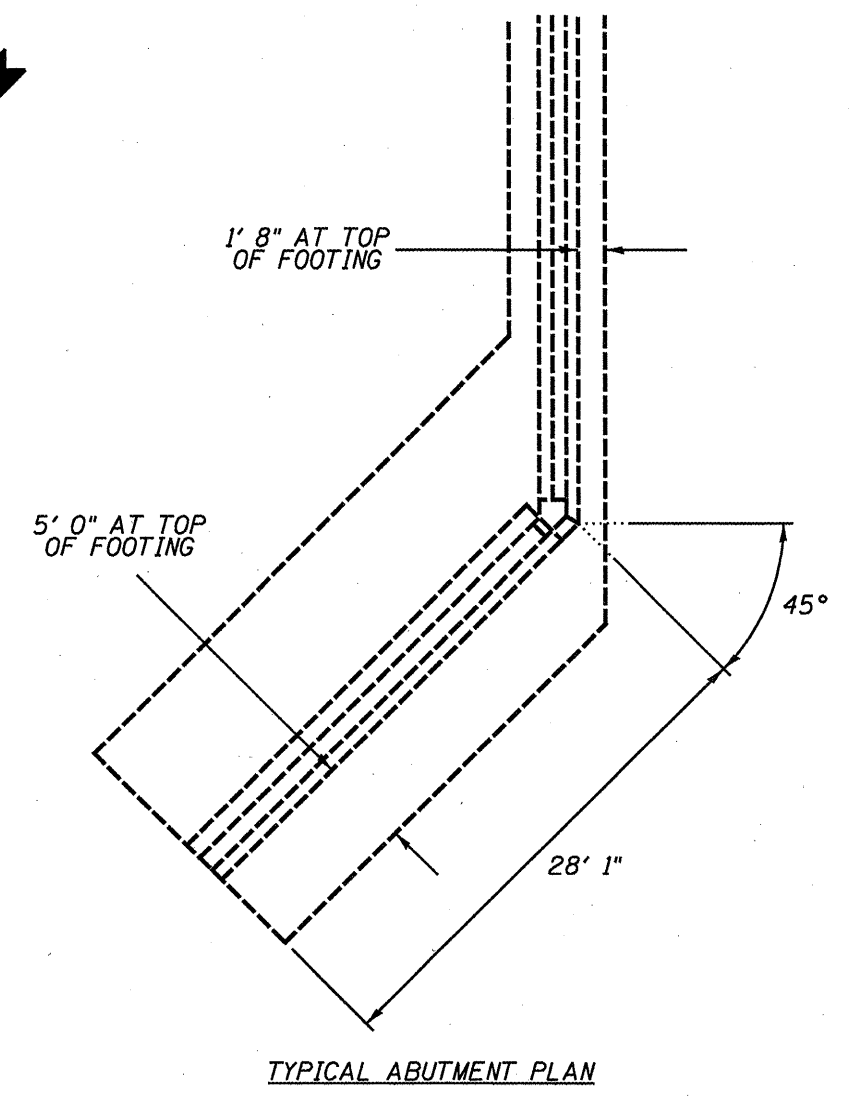
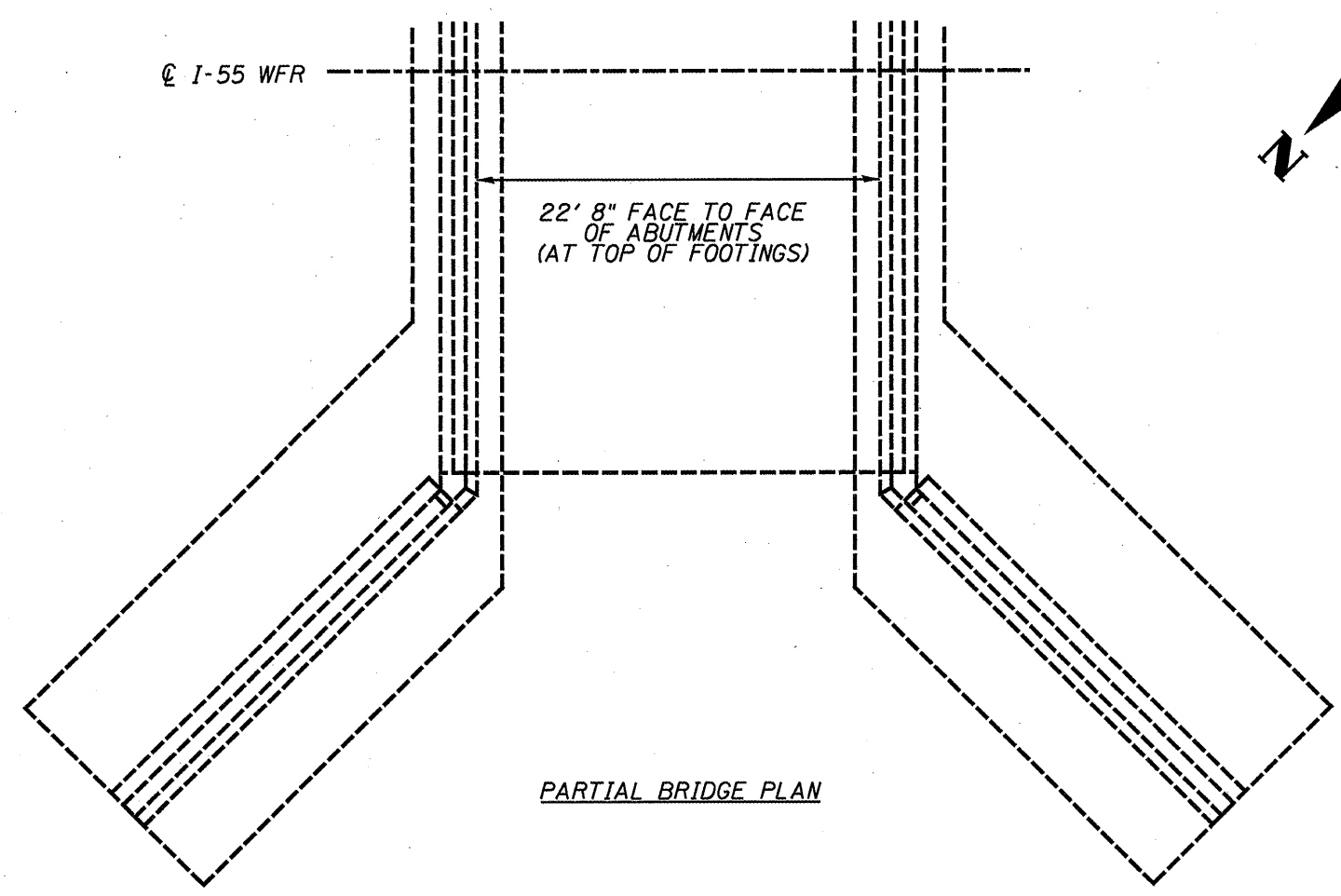
BRIDGE PLAN



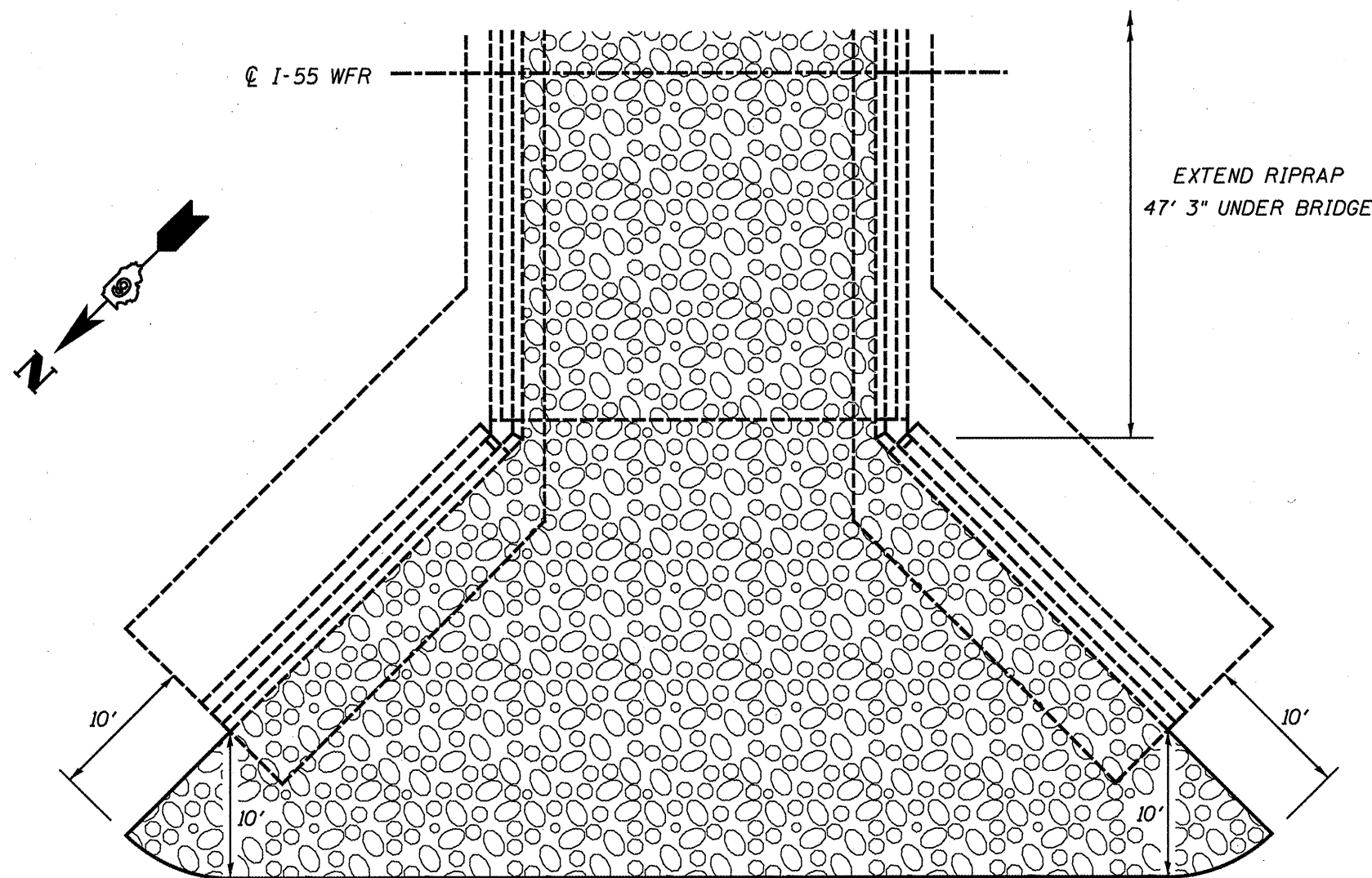
BILL OF MATERIAL (063-0005)	
STONE RIPRAP, CLASS A5	570 SQ YD

- NOTES:
- THE RIPRAP TOE DETAIL SHALL BE USED AROUND ALL EDGES OF THE RIPRAP AREA THAT ARE NOT ADJACENT TO THE EXISTING BRIDGE.
 - THE TOP OF RIPRAP SHALL MATCH THE EXISTING STREAMBED.

063-0005 RIPRAP PLAN
FAS 572 (IL 10)
D6 RIPRAP PROTECTION 2010
MASON COUNTY



054-0004 PLAN & ELEVATION
 FAS 1773 (I-55 WFR)
 D6 RIPRAP PROTECTION 2010
 LOGAN COUNTY



PARTIAL BRIDGE PLAN



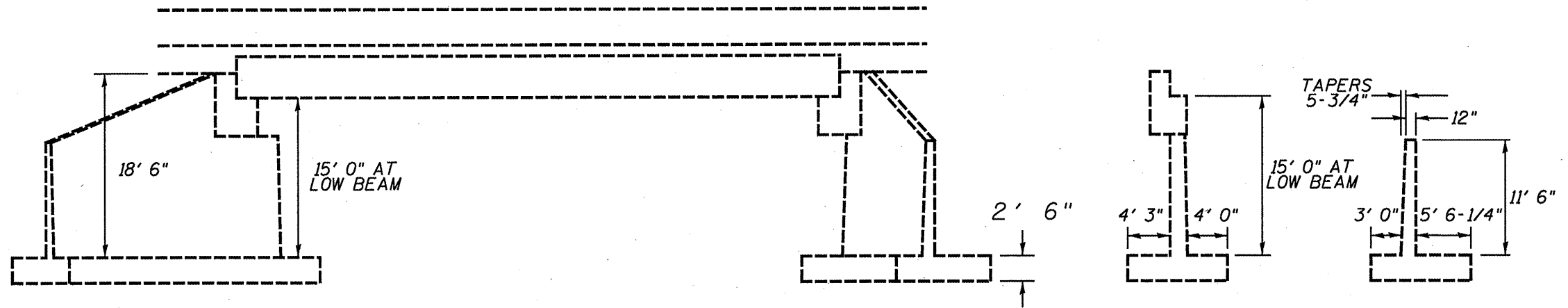
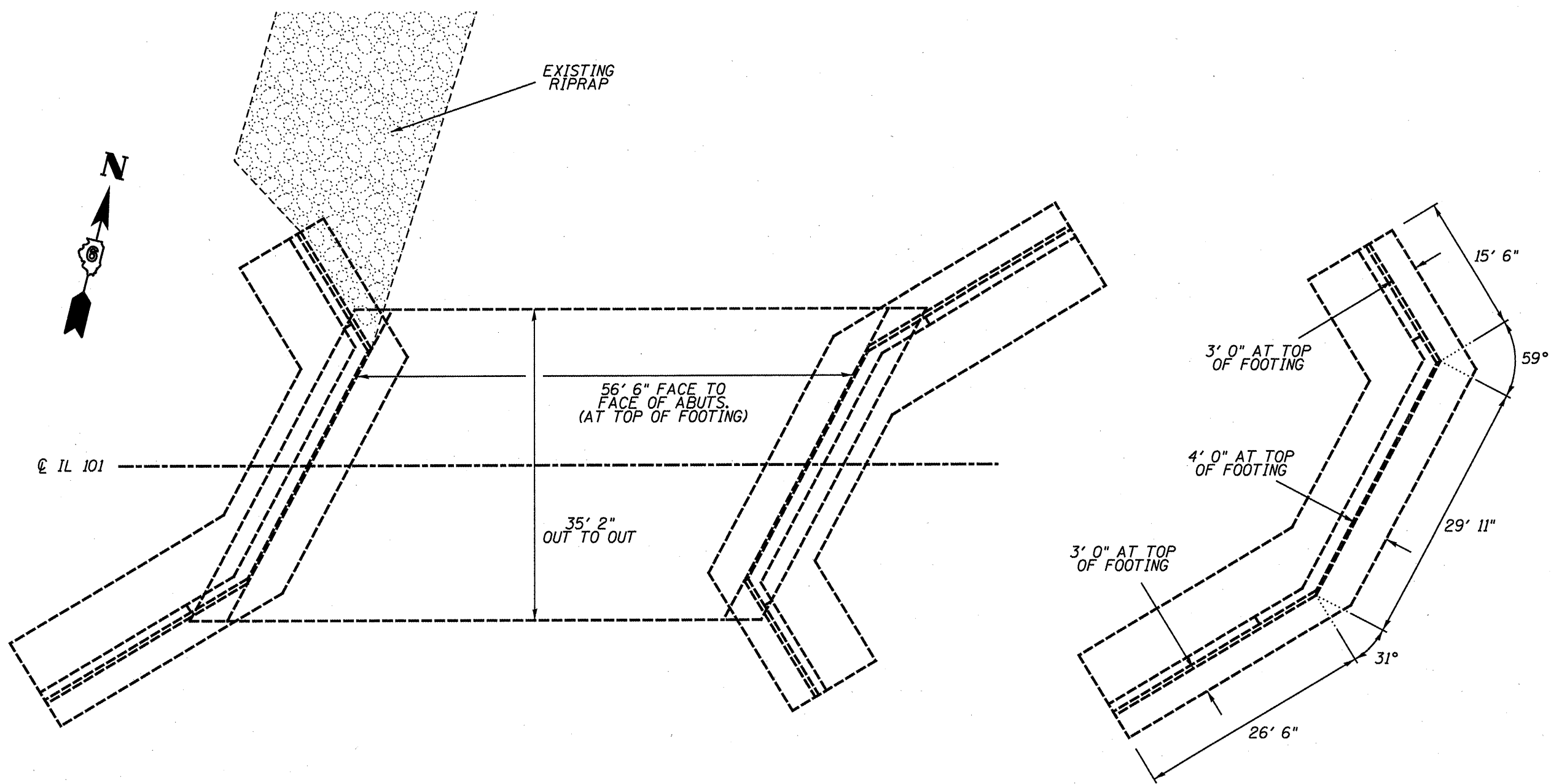
BILL OF MATERIAL (054-0004)	
STONE DUMPED RIPRAP, CLASS A4	230 TONS

NOTES:

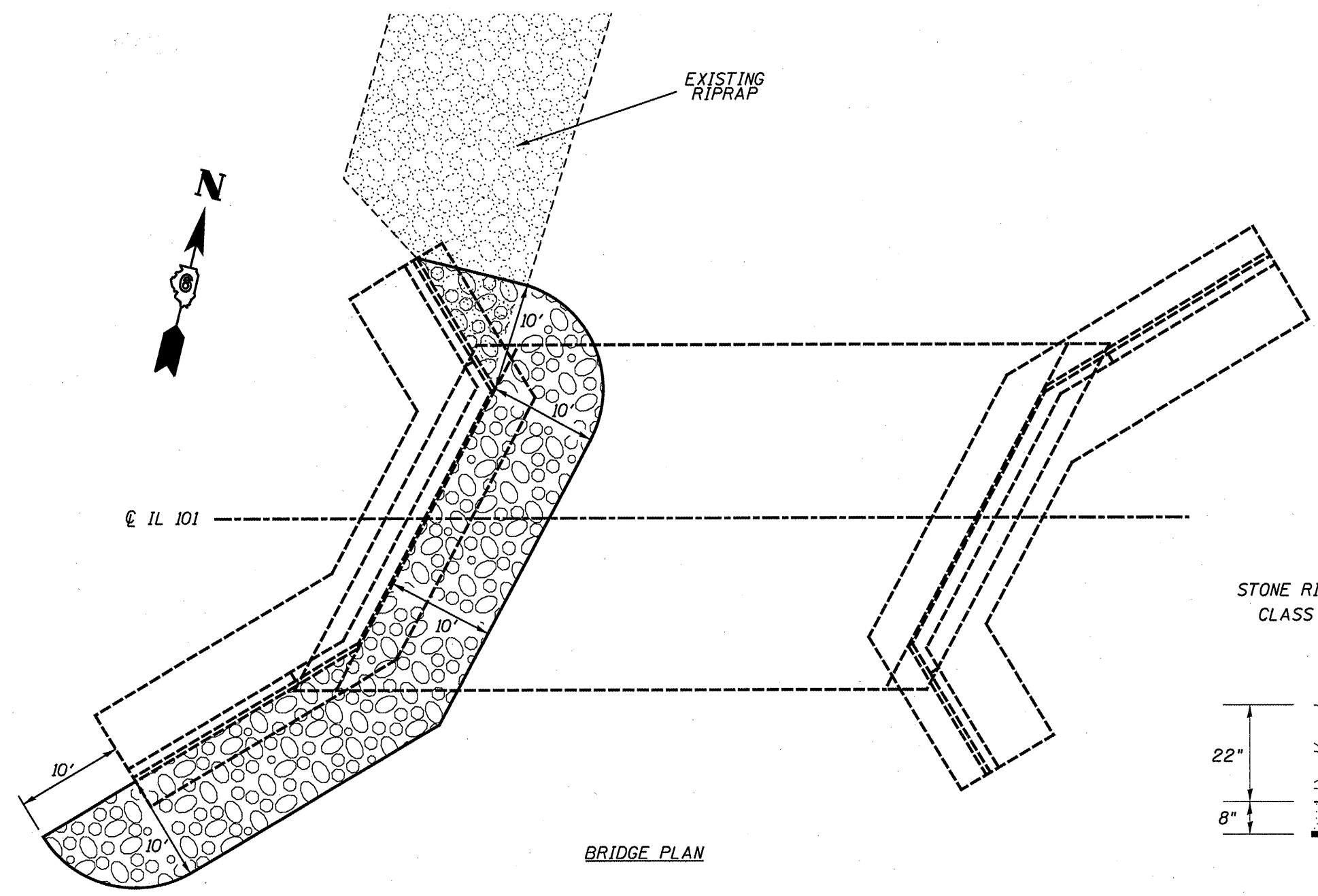
THE RIPRAP DEPTH SHALL BE 16"

RIPRAP SHALL ONLY BE PLACED AT THE WEST END
OF THE BRIDGE

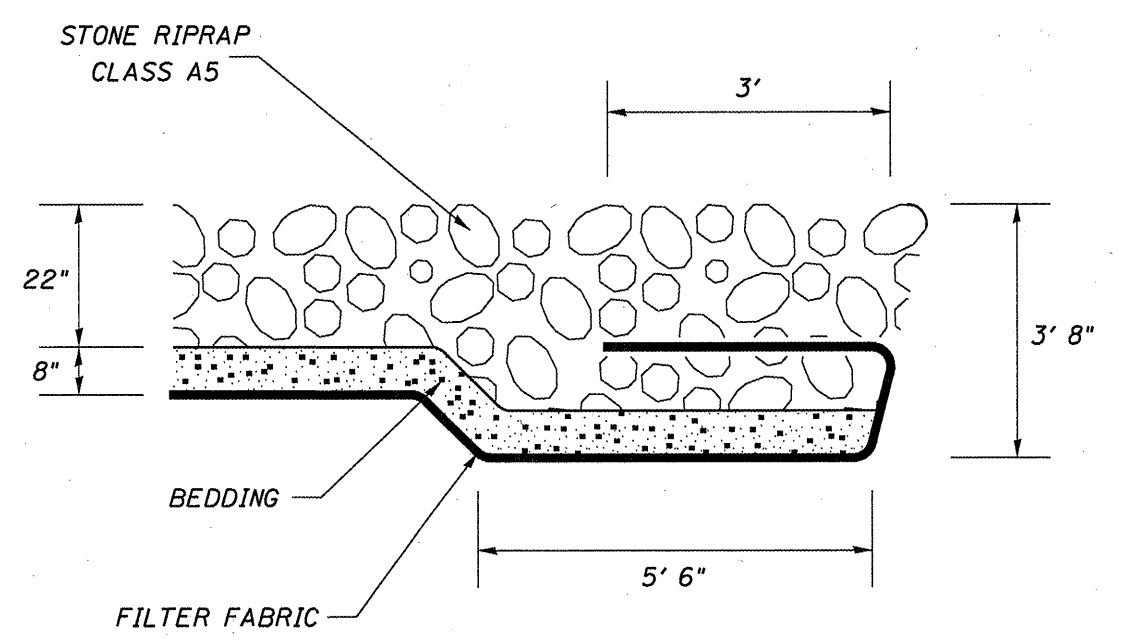
054-0004 RIPRAP PLAN
FAS 1773 (I-55 WFR)
D6 RIPRAP PROTECTION 2010
LOGAN COUNTY



085-0026 PLAN & ELEVATION
FAP 713 (IL 101)
D6 RIPRAP PROTECTION 2010
SCHUYLER COUNTY



BILL OF MATERIAL (085-0026)	
STONE RIPRAP, CLASS A5	90 SQ YD



NOTES:

THE TOP OF RIPRAP SHALL MATCH THE EXISTING STREAMBED.

THE RIPRAP TOE DETAIL SHALL BE USED AROUND ALL EDGES OF THE RIPRAP AREA THAT ARE NOT ADJACENT TO THE EXISTING BRIDGE.

IN AREAS WHERE EXISTING AND PROPOSED RIPRAP AREAS INTERSECT, THE PROPOSED RIPRAP SHALL BE OVERLAID ON TOP OF THE EXISTING RIPRAP. NO EXCAVATION, BEDDING MATERIAL, OR FILTER FABRIC SHALL BE REQUIRED IN THESE AREAS. THE FINISHED SURFACE SHALL BE BLENDED INTO THE ADJACENT EXISTING RIPRAP. THE DEPTH OF PROPOSED RIPRAP IN THESE AREAS SHALL BE AS DIRECTED BY THE ENGINEER, BUT SHALL NOT EXCEED 22". THESE AREAS WILL BE PAID FOR BY THE SQUARE YARD AT THE BID PRICE FOR STONE RIPRAP, CLASS A5.

085-0026 RIPRAP PLAN
FAP 713 (IL 101)
D6 RIPRAP PROTECTION 2010
SCHUYLER COUNTY