

F.A. RTE.	SECTION	COUNTY	TOTAL SHEETS	SHEET NO.
114B-1(1) & 114B-1(2)		FAYETTE	54	1
FED. ROAD DIST. NO.	ILLINOIS	CONTRACT NO.	74110	
F.A.P. RTE. 750, F.A.S. RTE. 719				

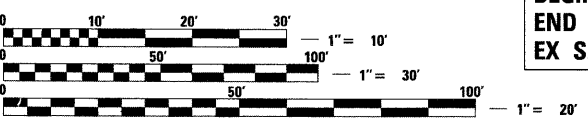
SHEET NO.	DESCRIPTION
1	COVER SHEET
2	INDEX OF HIGHWAY STANDARDS
3	GENERAL NOTES
4-7	SUMMARY OF QUANTITIES
SECTION 114B-1(1) PLANS	
8	TYPICAL SECTIONS
9-10	SCHEDULE OF QUANTITIES
11	ALIGNMENT, TIES, & BENCHMARKS
12-14	PLAN AND PROFILE SHEET
15	ENTRANCE DETAILS
16-18	MAINTENANCE OF TRAFFIC PLANS
19-27	STRUCTURE PLANS
28-30	CROSS SECTIONS
SECTION 114B-1(2) PLANS	
31-32	TYPICAL SECTIONS
33-34	SCHEDULE OF QUANTITIES
35	ALIGNMENT, TIES, & BENCHMARKS
36	PLAN AND PROFILE SHEET
37	ENTRANCE DETAILS
38-41	MAINTENANCE OF TRAFFIC PLANS
42-50	STRUCTURE PLANS
51-54	CROSS SECTIONS

STATE OF ILLINOIS  
DEPARTMENT OF TRANSPORTATION

DIVISION OF HIGHWAYS  
**PROPOSED  
HIGHWAY PLANS**

F.A.P. RTE. 750 (IL 185) & F.A.S. RTE. 719 (IL 185)  
SECTION 114B-1(1) & 114B-1(2)  
**PROJECT ACF-ACRS-000S(691)**  
STRUCTURE REPLACEMENT  
FAYETTE COUNTY

**IDOT HIGHWAY STANDARDS**  
SEE SHEET 2

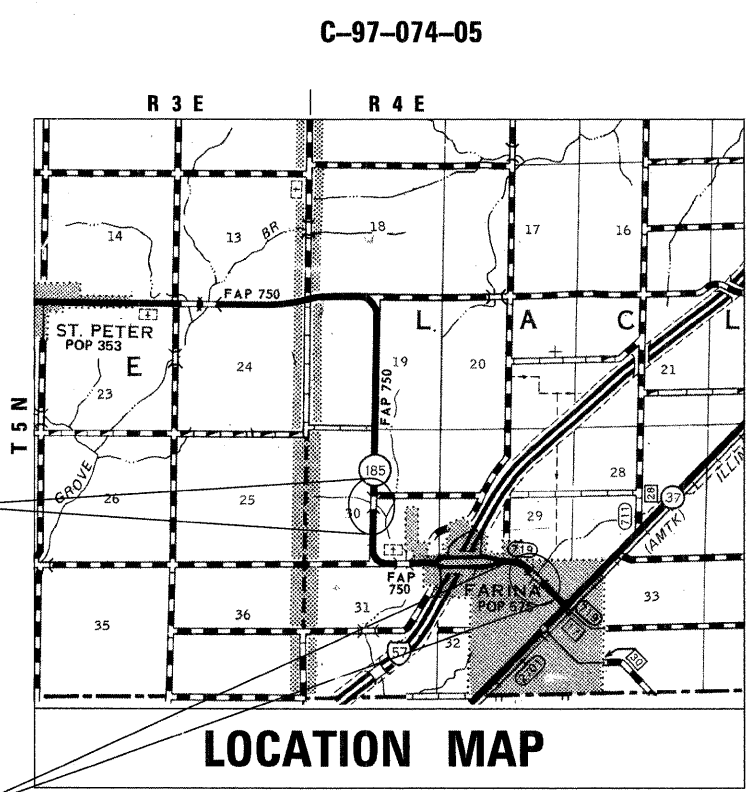


FULL SIZE PLANS HAVE BEEN PREPARED USING STANDARD ENGINEERING SCALES. REDUCED SIZED PLANS WILL NOT CONFORM TO STANDARD SCALES. IN MAKING MEASUREMENTS ON REDUCED PLANS, THE ABOVE SCALES MAY BE USED.

**ie** CONSULTANTS, INC.  
6420 SOUTH SIXTH STREET  
SPRINGFIELD, ILLINOIS 62712  
TEL. (217) 529-8027  
FAX (217) 529-4543  
WWW.IE-CONSULTANTS.COM

F.A.P. RTE. 750 - SECTION 114B-1(1)  
BEGIN IMPROVEMENTS STA. 936 + 41.00  
END IMPROVEMENTS STA. 942 + 58.00  
EX S.N. 026-0070 PR S.N. 026-2020

F.A.S. RTE. 719 - SECTION 114B-1(2)  
BEGIN IMPROVEMENTS STA. 1030 + 85.00  
END IMPROVEMENTS STA. 1036 + 25.00  
EX S.N. 026-0072 PR S.N. 026-2019



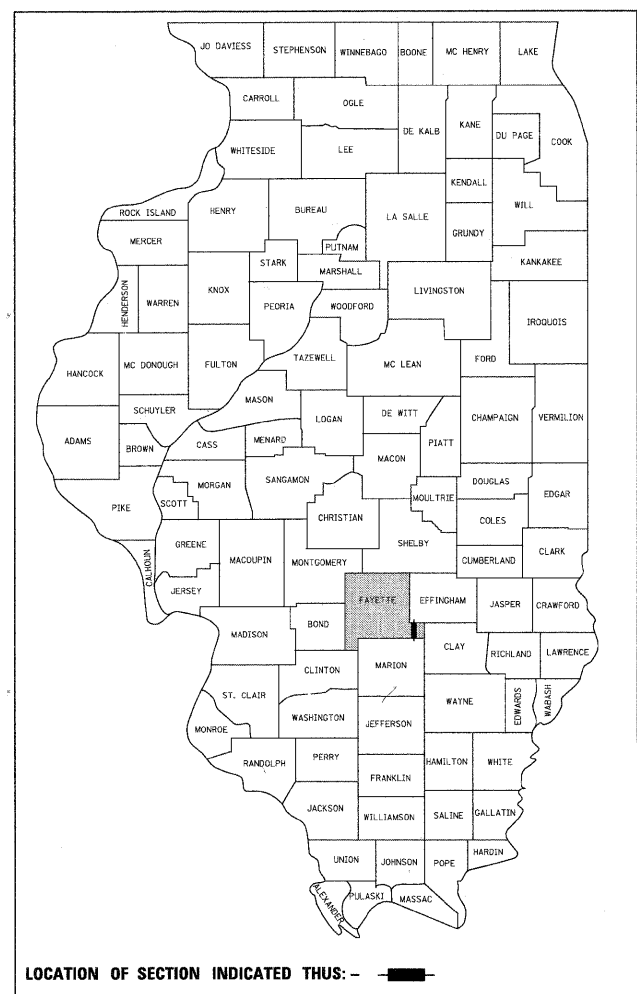
APPROXIMATE SCALE: 0 1 2 MILES

LENGTH OF SECTION 114B-1(1) = 617.00 FEET (0.117 MILES)  
LENGTH OF SECTION 114B-1(2) = 540.00 FEET (0.102 MILES)  
NET LENGTH = 1,157.00 FEET (0.219)  
SECTION 114B-1(1) CLASSIFICATION = RURAL MINOR ARTERIAL  
CURRENT ADT: 1,170 (2009) PROJECTED ADT: 1,740 (2031)  
SECTION 114B-1(2) CLASSIFICATION = RURAL MAJOR COLLECTOR  
CURRENT ADT: 2,350 (2007) PROJECTED ADT: 3,490 (2027)  
85% PV 8% SU 7% MU

CALL **J.U.L.I.E.** (JOINT UTILITY LOCATION INFORMATION FOR EXCAVATORS)  
18 Hours (2 working days) Before You Dig.  
TOLL FREE: 1 (800) 892-0123 OR 811

PROJECT ENGINEER: MARK DAUGHERTY (217) 342-3951  
PROJECT MANAGER  
CONTRACT NO. 74110

D-97-039-05



STATE OF ILLINOIS  
DEPARTMENT OF TRANSPORTATION  
DIVISION OF HIGHWAYS  
SUBMITTED October 9 2009  
Roger L. Shindler  
DEPUTY DIRECTOR OF HIGHWAYS, REGION FOUR ENGINEER  
December 4, 2009  
Charles G. Ingersoll  
ENGINEER OF DESIGN AND ENVIRONMENT  
December 4, 2009  
Christine M. Reed  
DIRECTOR OF HIGHWAYS, CHIEF ENGINEER

**PRINTED BY THE AUTHORITY  
OF THE STATE OF ILLINOIS**

DAVID R. BOOHER  
REGISTERED PROFESSIONAL ENGINEER  
ILLINOIS  
062-043769

DR  
DAVID R. BOOHER ILLINOIS P.E. 062-043769  
EXPIRES 11/30/2009  
DATE 9-29-09

D774110-shr-Cover.dgn