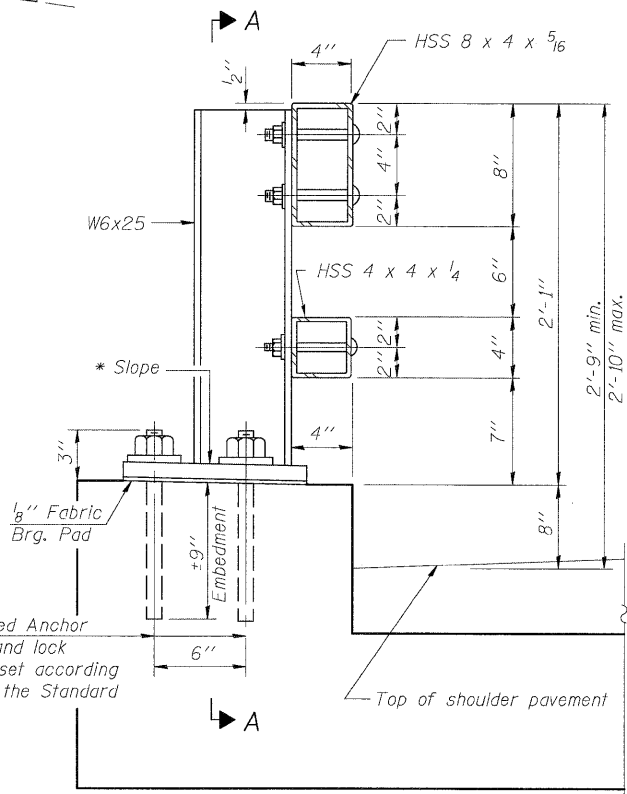
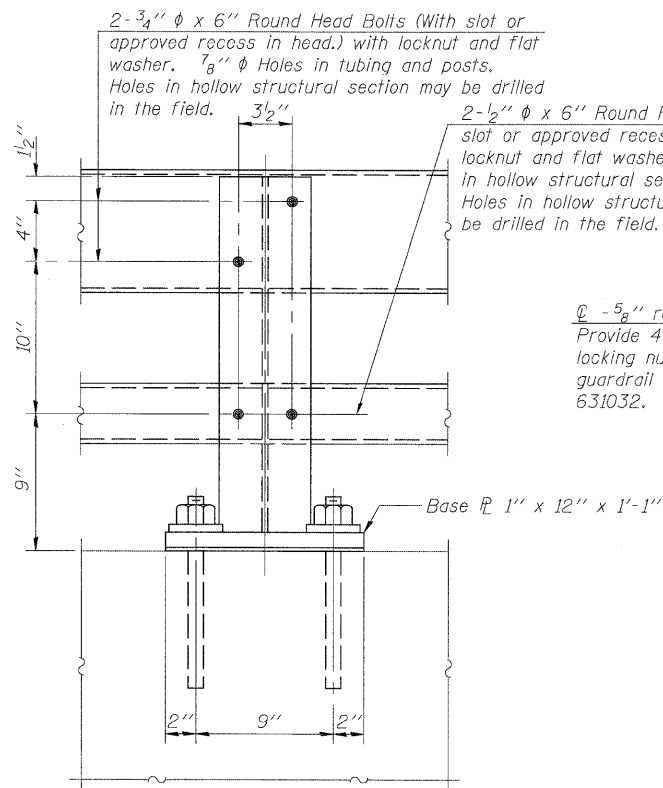


STATE OF ILLINOIS
DEPARTMENT OF TRANSPORTATION

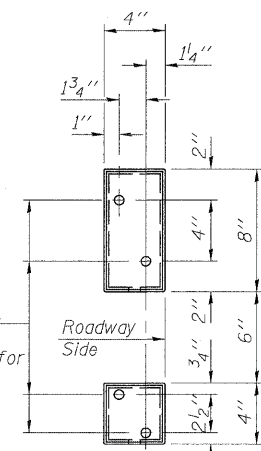
* Cut bottom end of post to curb slope.



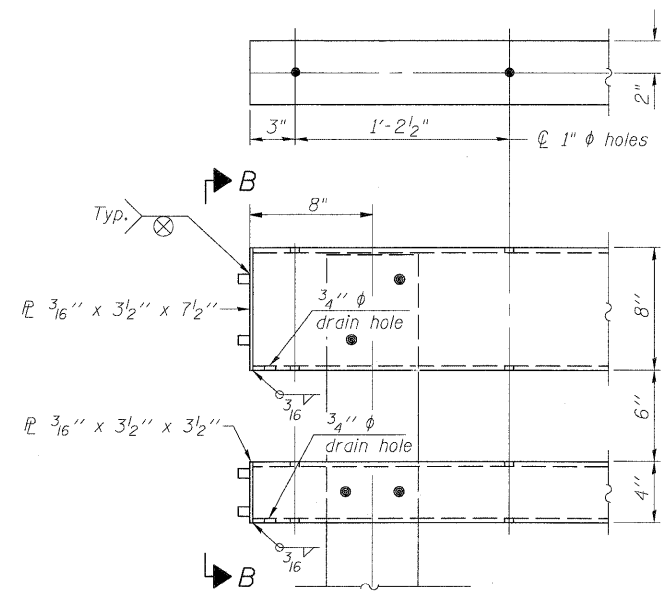
SECTION AT RAIL POST



SECTION A-A



VIEW B-B



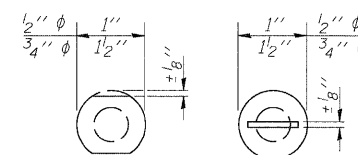
END OF RAIL DETAILS

4- 1" ϕ H.S. Threaded Anchor Rods with hex nuts and lock washers, drilled and set according to Article 509.06 of the Standard Specifications.

2- 3/4" ϕ x 6" Round Head Bolts (With slot or approved recess in head.) with locknut and flat washer. 7/8" ϕ Holes in tubing and posts. Holes in hollow structural section may be drilled in the field.

2- 1/2" ϕ x 6" Round Head Bolts (With slot or approved recess in head.) with locknut and flat washer. 5/8" ϕ Holes in hollow structural section and post. Holes in hollow structural section may be drilled in the field.

4 - 5/8" reduced base welded studs. Provide 4 - 5/8" washers and self-locking nuts or nuts and jam nuts for guardrail connection shown on Std. 631032.



Without Slot or Recess With Slot

VIEW C-C

Notes:

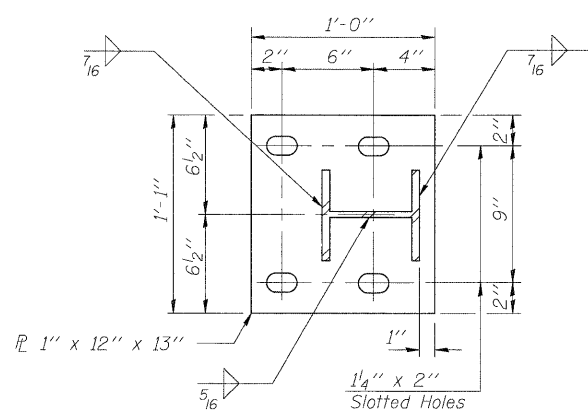
All field drilled holes shall be coated with an approved zinc rich paint before erection.

Posts shall not be located closer than 1'-3" to an existing bridge expansion joint or end of bridge.

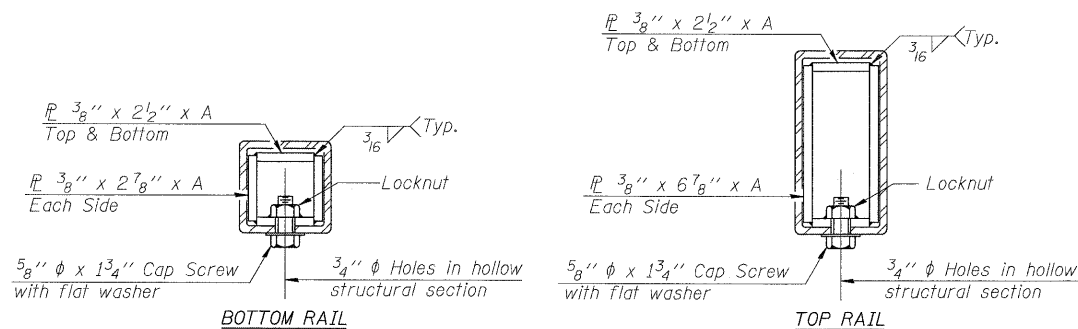
Steel Bridge Rail expansion joint shall be provided between any two (2) posts which span a bridge expansion joint. Bolts located at expansion joint shall be provided with locknuts and shall be tightened only to a point that will allow ralling movement.

Provide one 1/8" and two 1/16" steel shims for 25% of the posts. Shims shall be similar to base plates in size and holes.

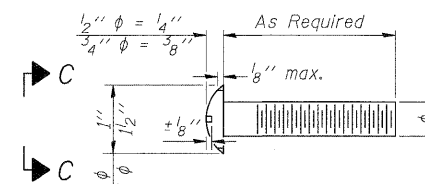
All steel rail elements shall be galvanized according to Article 509.05 of the Standard Specifications.



BASE PLATE DETAIL



SECTIONS AT RAIL SPLICE



DETAIL OF 1/2" ϕ & 3/4" ϕ ROUND HEAD BOLTS

SPLICE DIMENSIONS

| T | D | A | B | C | E |
|--------------------|--------|--------|--------|--------|--------|
| $\leq 4"$ | 2 1/2" | 1'-8" | 2" | 4" | 2 1/2" |
| $> 4" \leq 6 1/2"$ | 3 3/4" | 2'-0" | 2 1/2" | 5 1/2" | 3 1/2" |
| $> 6 1/2" \leq 9"$ | 5" | 2'-4" | 3 1/2" | 6 1/2" | 9" |
| $> 9" \leq 13"$ | 7" | 2'-10" | 4 1/2" | 8 1/2" | 11" |
| Rail Splice | 1/4" | 1'-8" | 2" | 4" | — |

T = Total movement at expansion joint as shown on the design plans.

BILL OF MATERIAL

| Item | Unit | Quantity |
|--------------------------|------|----------|
| Steel Railing, Type 2399 | Foot | 56 |

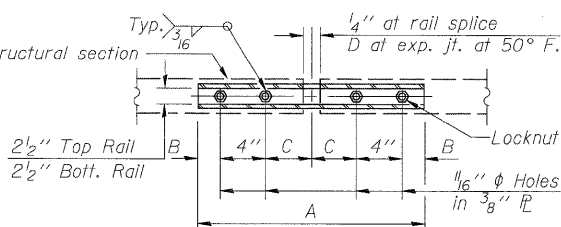
See sheet 1 of 9 for post spacing.

| | |
|----------|-----|
| DESIGNED | SCD |
| CHECKED | DRB |
| DRAWN | THW |
| CHECKED | |

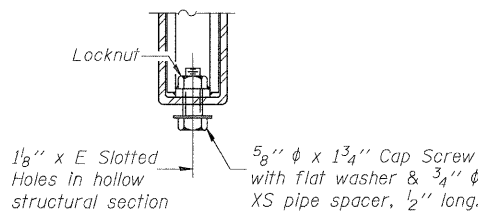


IE CONSULTANTS, INC
6420 SOUTH SIXTH STREET
SPRINGFIELD, ILLINOIS 62712
TEL. (217) 529-8027
FAX (217) 529-4543
IESPRINGFIELD@IE-CONSULTANTS.COM
WWW.IE-CONSULTANTS.COM

(6'-3" Maximum Post Spacing)



PLAN-BOTT. SPLICE R TYPICAL



RAIL SPLICE CONNECTION AT EXPANSION JT.

| SHEET NO. 6 | F.A. RTE. | SECTION | COUNTY | TOTAL SHEETS | SHEET NO. |
|-------------|-----------|------------------------------------|--------------------|------------------|-----------|
| OF 9 SHEETS | * | 114B-1(1) & 114B-1(2) | FAYETTE | 54 | 24 |
| | | * F.A.P. RTE. 750, F.A.S. RTE. 719 | CONTRACT NO. 74110 | | |
| | | FED. ROAD DIST. NO. _ | ILLINOIS | FED. AID PROJECT | |

STEEL RAILING, TYPE 2399
S.N. 026-2020