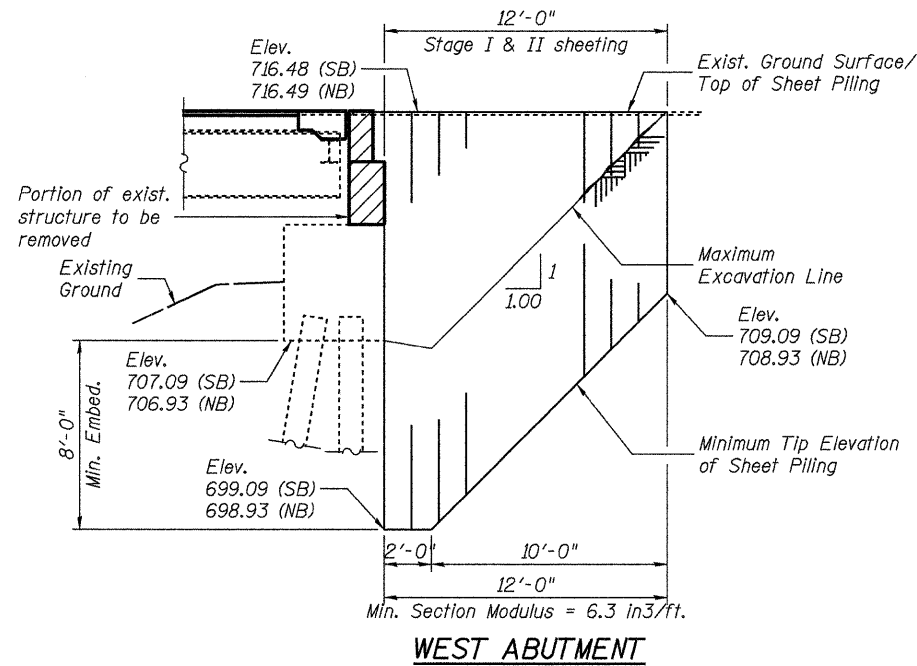
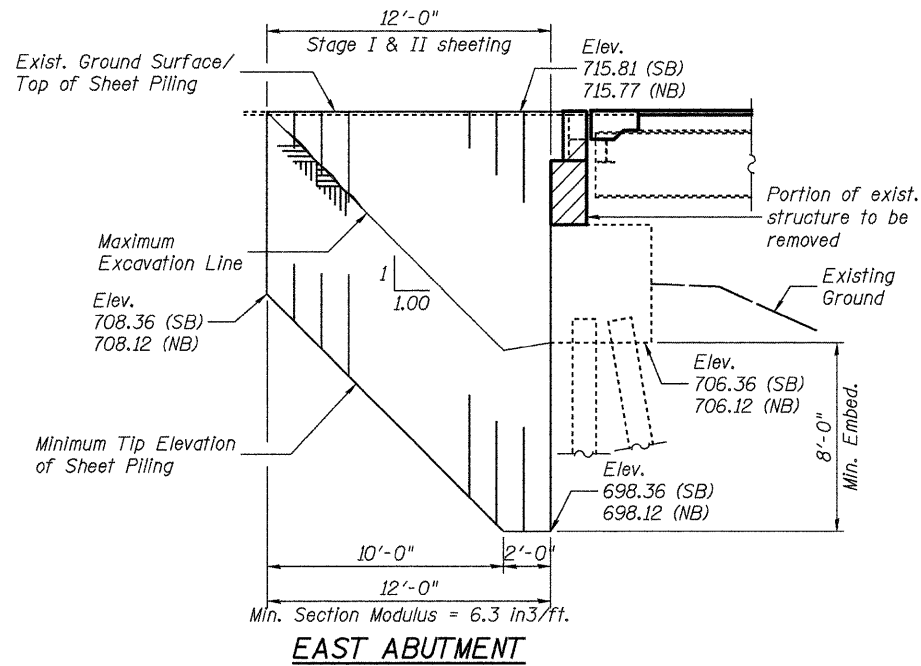


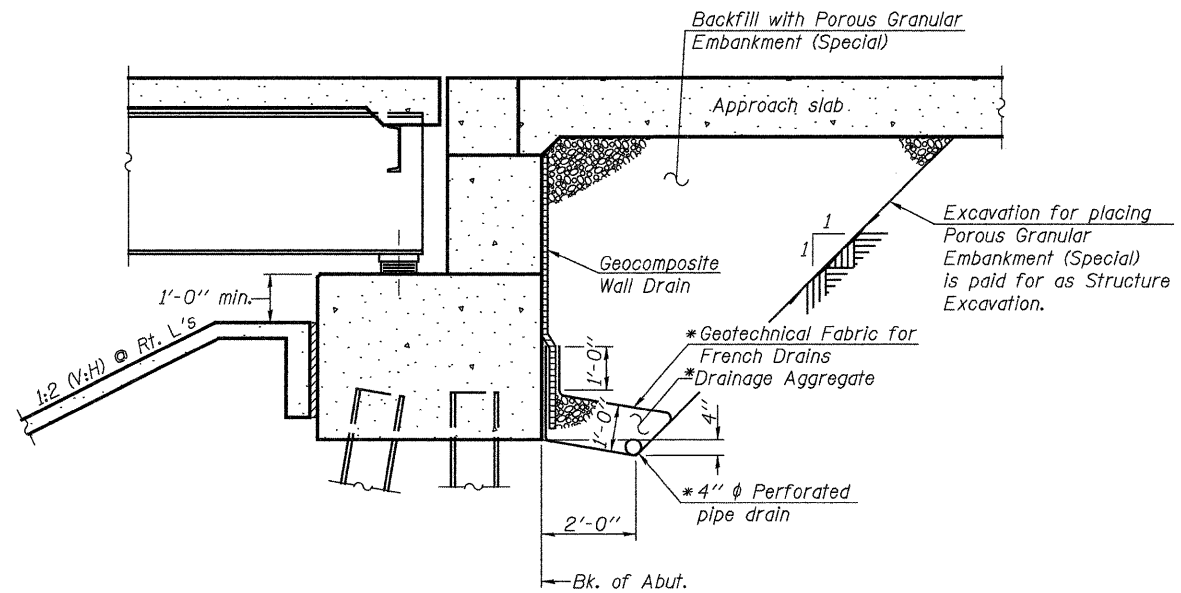
STATE OF ILLINOIS
DEPARTMENT OF TRANSPORTATION



TEMPORARY SHEET PILING DETAILS

(Slopes and horizontal dimensions are measured parallel to \bar{C} roadway)

If the Contractor chooses to alter the temporary cantilevered sheet piling design requirements shown on plans, a design submittal including plan details and calculations will be required for review and acceptance by the Engineer.



**SECTION THRU PILE SUPPORTED
STUB ABUTMENT**

(Horiz. dim. \odot Rt. L's)

*Included in the cost of Pipe Underdrains for Structures.

Note:

All drainage system components shall extend parallel to the abutment back wall until they intersect the wingwalls. The pipe shall extend under the wingwall, then to the toe of slope. The pipes shall drain into concrete headwalls. (See Article 601.05 of the Standard Specifications and Highway Standard 60110).

**TEMPORARY SHEET PILING
STRUCTURE NO. 058-0108(SB) & 0109(NB)**

F.A.P. RTE.	SECTION	COUNTY	TOTAL SHEETS	SHEET NO.
322	(58-20)RS	MACON	151	104
STA. 235+00.78		CONTRACT NO. 74150		
FED. ROAD DIST. NO.		ILLINOIS FED. AID PROJECT		

SHEET 2
OF 26

JD Johnson, Depp & Quisenberry
CONSULTING ENGINEERS
Springfield, Illinois

DESIGNED: JDQ	DRAWN: SJS
CHECKED: DCD	CHECKED: DCD