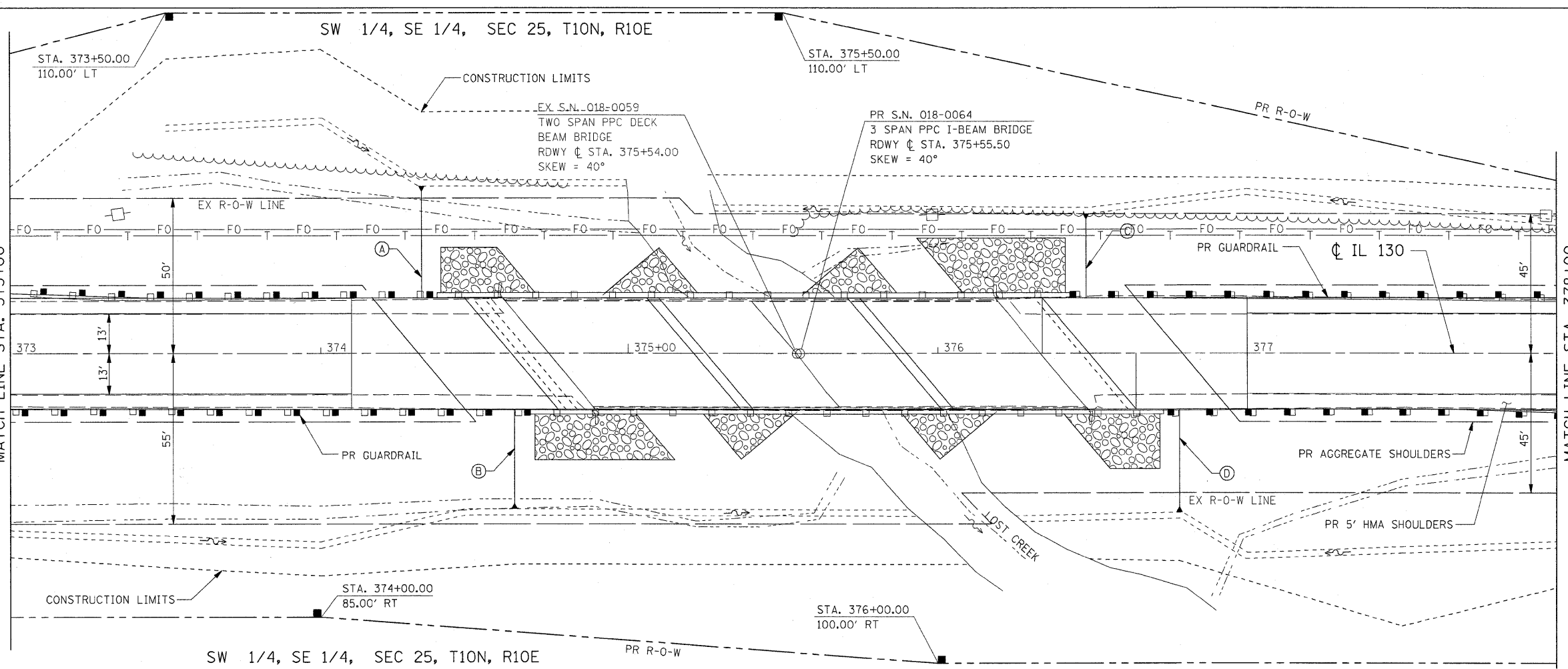


A STA. 374+33.00, LT  
PR BRIDGE APPROACH  
SHOULDER PAVEMENT  
& DRAIN (STD 609001)  
INLET, TY C  
TOG= 543.02, INV= 526.37  
PR PIPE DRAIN 12"x42"  
METAL END SECTION 12"

B STA. 374+63.00, LT  
PR BRIDGE APPROACH  
SHOULDER PAVEMENT  
& DRAIN (STD 609001)  
INLET, TY C  
TOG= 543.04, INV= 528.12  
PR PIPE DRAIN 12"x38"  
METAL END SECTION 12"

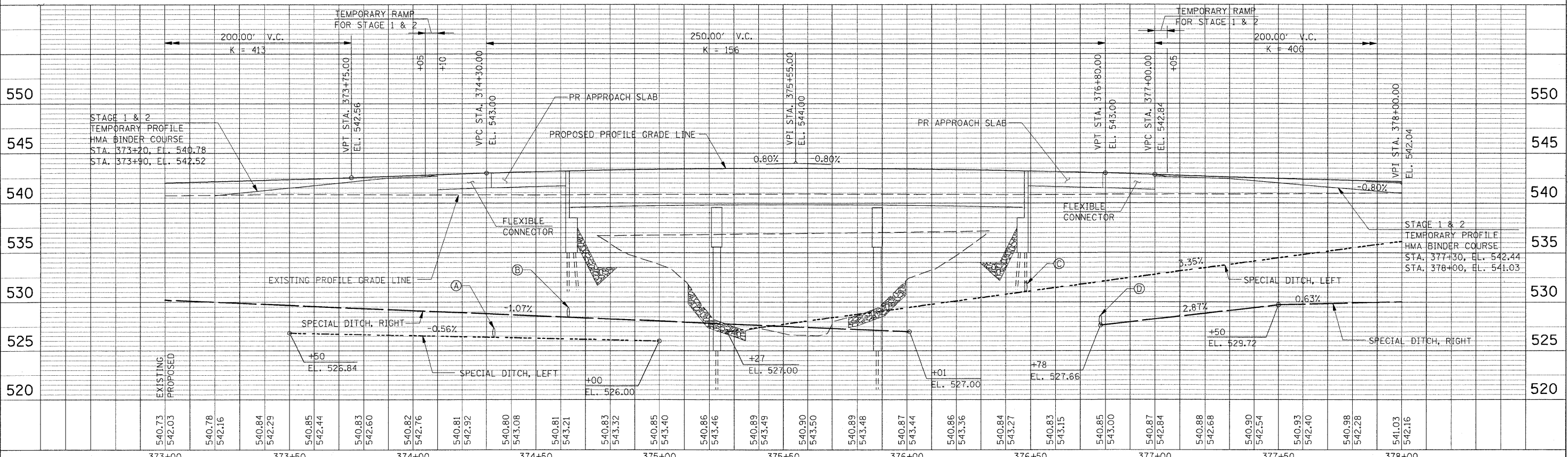
C STA. 376+48, LT  
PR BRIDGE APPROACH  
SHOULDER PAVEMENT  
& DRAIN (STD 609001)  
INLET, TY C  
TOG= 543.03, INV= 530.70  
PR PIPE DRAIN 12"x32"  
METAL END SECTION 12"

D STA. 376+78, LT  
PR BRIDGE APPROACH  
SHOULDER PAVEMENT  
& DRAIN (STD 609001)  
INLET, TY C  
TOG= 542.82, INV= 527.65  
PR PIPE DRAIN 12"x36"  
METAL END SECTION 12"



PLAN  
NO. \_\_\_\_\_  
NOTE BOOK \_\_\_\_\_  
CHECKED \_\_\_\_\_  
DATE \_\_\_\_\_

PROFILE  
NO. \_\_\_\_\_  
NOTE BOOK \_\_\_\_\_  
CHECKED \_\_\_\_\_  
DATE \_\_\_\_\_



FILE NAME =		USER NAME = JE Consultants	DESIGNED -	REVISED -
G:\S08026-7\CADD Sheets\0774236-sh1-P1.dgn			DRAWN -	REVISED -
PLOT SCALE = 20.0000' / IN.			CHECKED -	REVISED -
PLOT DATE = 09/01/2009			DATE -	REVISED -

STATE OF ILLINOIS DEPARTMENT OF TRANSPORTATION					<b>PLAN AND PROFILE</b> <b>STA. 373 + 00 TO STA. 378 + 00</b>					
SCALE:	SHEET NO.	OF	SHEETS	STA.	TO STA.	F.A.S. RTE.	SECTION	COUNTY	TOTAL SHEETS	SHEET NO.
						116	112B1B	CUMBERLAND	72	15
						CONTRACT NO. 74236				
FED. ROAD DIST. NO. [ILLINOIS] FED. AID PROJECT										