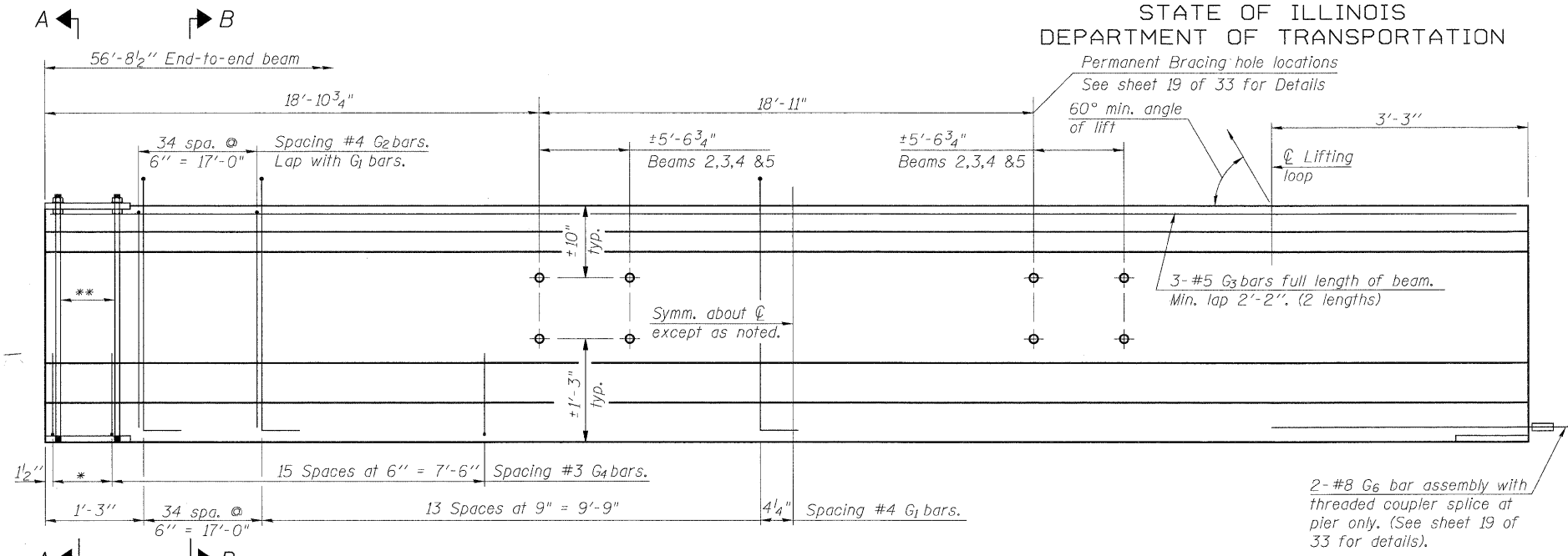


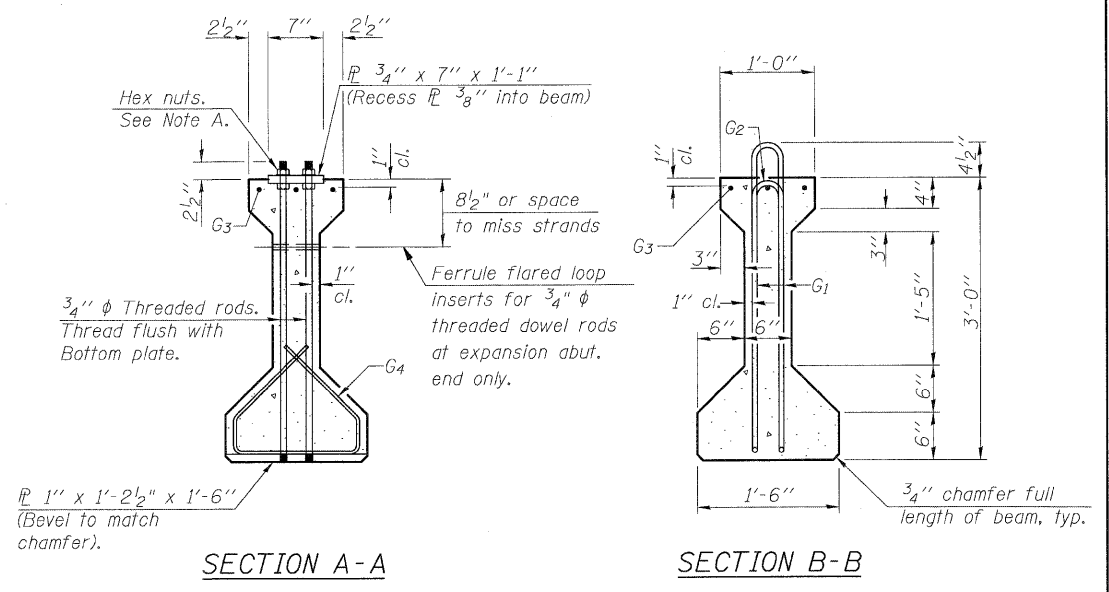
STATE OF ILLINOIS  
DEPARTMENT OF TRANSPORTATION



**ELEVATION OF BEAM**  
(Showing reinforcement & dimensions)

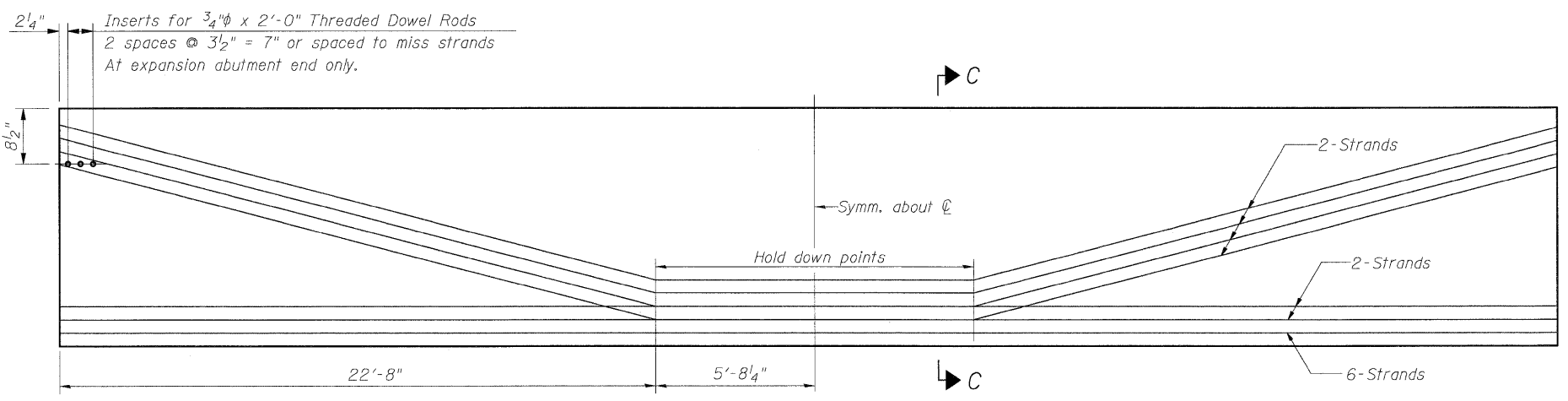
\* 3 spaces at 3" = 9".  
\*\* 4-3/4" φ threaded dowel rods at 3" cts., Each Face

Note A:  
Hex nuts (top and bottom) with lock washers (top). Only tighten sufficiently to compress lock washers.

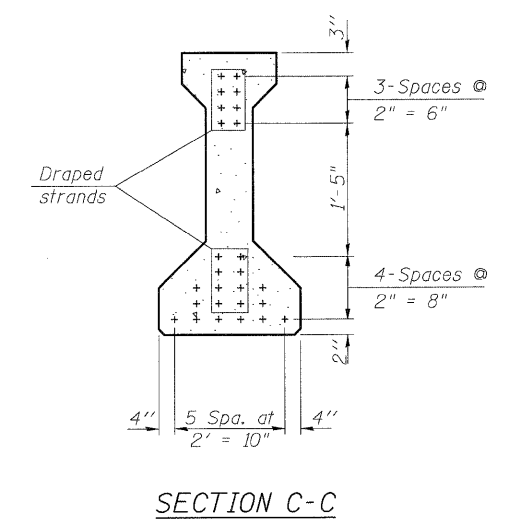


**SECTION A-A**

**SECTION B-B**



**ELEVATION OF BEAM**  
(Showing prestressing steel)



**SECTION C-C**

**\*\*\*BAR LIST  
ONE BEAM ONLY**

Bar	No.	Size	Length	Shape
G <sub>1</sub>	96	#4	7'-5"	∩ L
G <sub>2</sub>	70	#4	5'-8"	∩
G <sub>3</sub>	6	#5	29'-4"	—
G <sub>4</sub>	38	#3	4'-1"	⊂
G <sub>6</sub>	2	#8	6'-6"	⌋

\*\*\*For information only  
Notes:  
See sheet 19 of 33 for additional details and Bill of Material.  
Required release strength, f'ci, shall be 5,000 psi.

DESIGNED	SCD
CHECKED	DRB
DRAWN	THW
CHECKED	SCD

**ie** CONSULTANTS, INC  
6420 SOUTH SIXTH STREET  
SPRINGFIELD, ILLINOIS 62712  
TEL. (217) 629-8027  
FAX (217) 629-4543  
WWW.IE-CONSULTANTS.COM

**36" P.P.C. I-BEAM  
SPAN 1 & 3  
S.N. 018-0064**

SHEET NO. 18 OF 33 SHEETS	F.A.P. RTE.	SECTION	COUNTY	TOTAL SHEETS	SHEET NO.
	116	(112BR1)B	CUMBERLAND	72	49
FED. ROAD DIST. NO. - ILLINOIS			FED. AID PROJECT		
CONTRACT NO. 74236					