

NGS V 34 NAVD 88 665.19 PUBLISHED

DESCRIBED BY NATIONAL GEODETIC SURVEY 1969, 5 MILES NORTH FROM DECATUR, ABOUT 4.65 MILES NORTH ALONG THE ILLINOIS CENTRAL RAILROAD FROM THE NORFOLK AND WESTERN RAILWAY STATION AT DECATUR, THENCE 0.35 MILES WEST ALONG A PAVED ROAD, 0.15 MILE WEST OF THE LINCOLN LABORATORIES COMPANY BUILDING, 20 1/2 FEET NORTH OF THE CENTERLINE OF THE ROAD, 206 FEET EAST OF THE CENTER LINE OF U.S. HIGHWAY 51, 49 FEET EAST OF THE CENTER LINE OF A PRIVATE DRIVEWAY, 7 1/2 FEET EAST OF A POWER POLE, ABOUT LEVEL WITH THE ROAD, AND SET IN THE TOP OF A CONCRETE POST WHICH IS LEVEL WITH THE SURFACE OF THE GROUND. SEC 23, T 17 N, R 2 E.

NGS J 260 NAVD 88 666.00 PUBLISHED

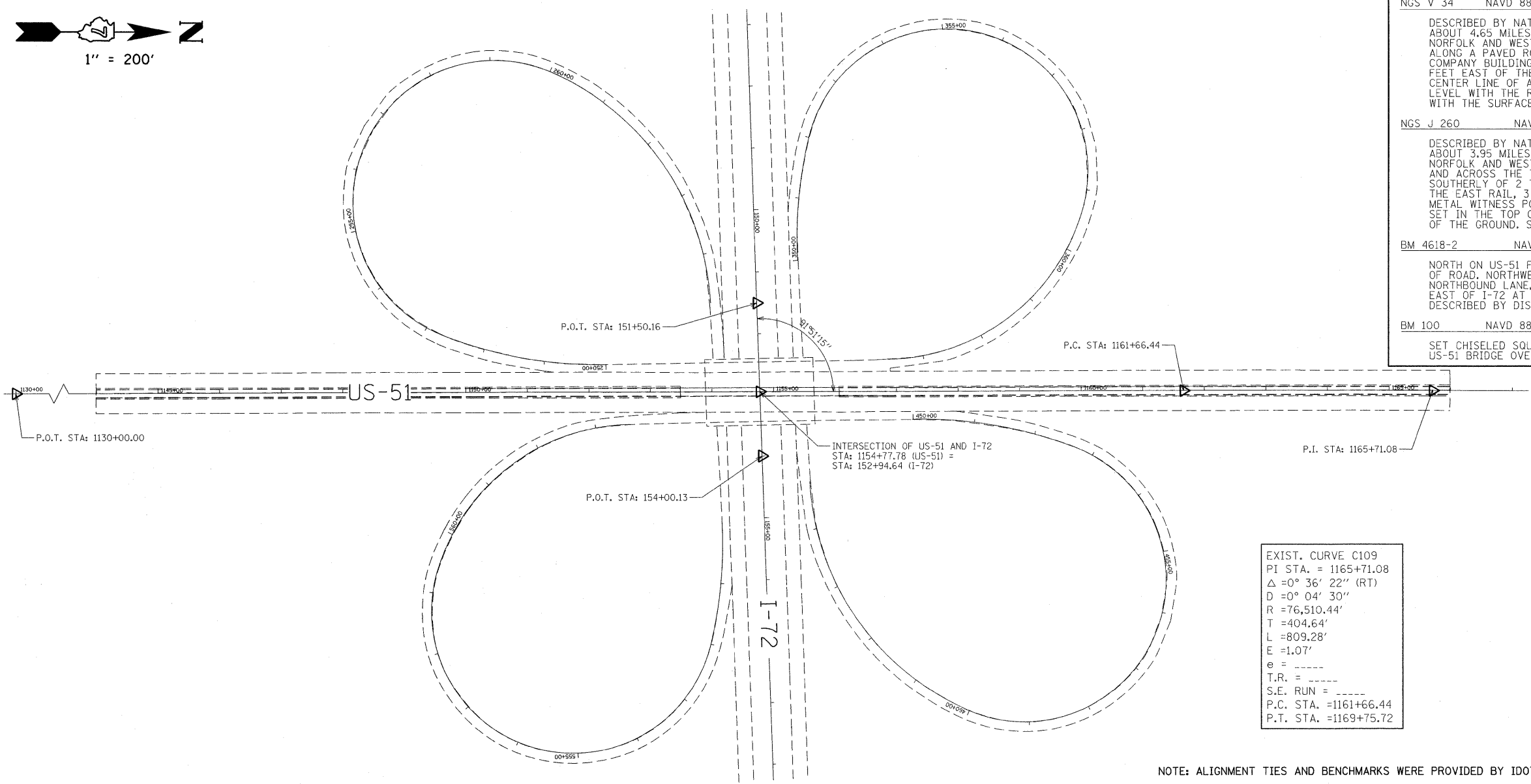
DESCRIBED BY NATIONAL GEODETIC SURVEY 1969, 4 MILES NORTH FROM DECATUR, ABOUT 3.95 MILES NORTH ALONG THE ILLINOIS CENTRAL RAILROAD FROM THE NORFOLK AND WESTERN RAILWAY STATION AT DECATUR, 131 1/2 FEET NORTHEAST AND ACROSS THE TRACK FROM MILEPOST 756, 160 YARDS SOUTH OF THE MORE SOUTHERLY OF 2 TUBULAR CULVERTS UNDER THE TRACK, 37 1/2 FEET EAST OF THE EAST RAIL, 3 FEET SOUTH OF A TELEPHONE POLE, 1.9 FEET NORTH OF A METAL WITNESS POST, ABOUT 2 1/2 FEET BELOW THE LEVEL OF THE TRACK, AND SET IN THE TOP OF A CONCRETE POST WHICH PROJECTS 1 INCH ABOUT THE SURFACE OF THE GROUND. SEC 26, T 17 N, R 2 E.

BM 4618-2 NAVD 88 669.17 CALCULATED

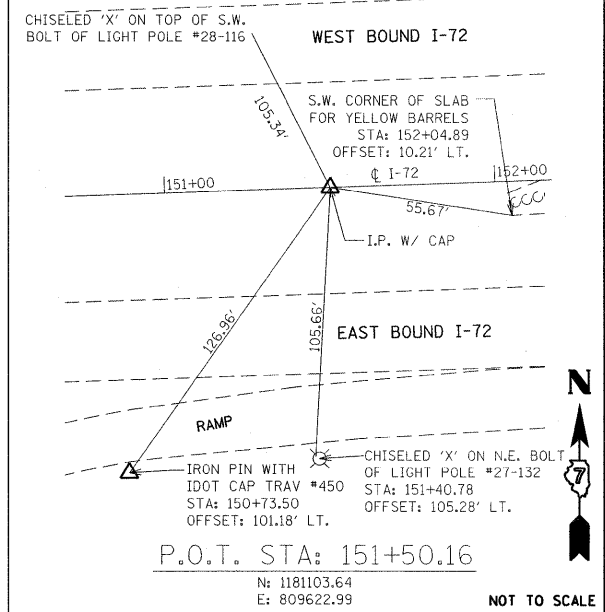
NORTH ON US-51 FROM INTERCHANGE WITH I-72, 0.02 MILE TO BENCH ON EAST SIDE OF ROAD, NORTHWEST BOLT OF STREET LIGHT, 86.5 FEET EAST OF CENTERLINE US-51 NORTHBOUND LANE, 73.5 FEET WEST OF CORNER POST ON R.O.W. FENCE, 29.4 FEET EAST OF I-72 AT WEST OFF RAMP ON THE NORTH EDGE OF PAVEMENT FOUND AS DESCRIBED BY DISTRICT 5.

BM 100 NAVD 88 648.98 CALCULATED

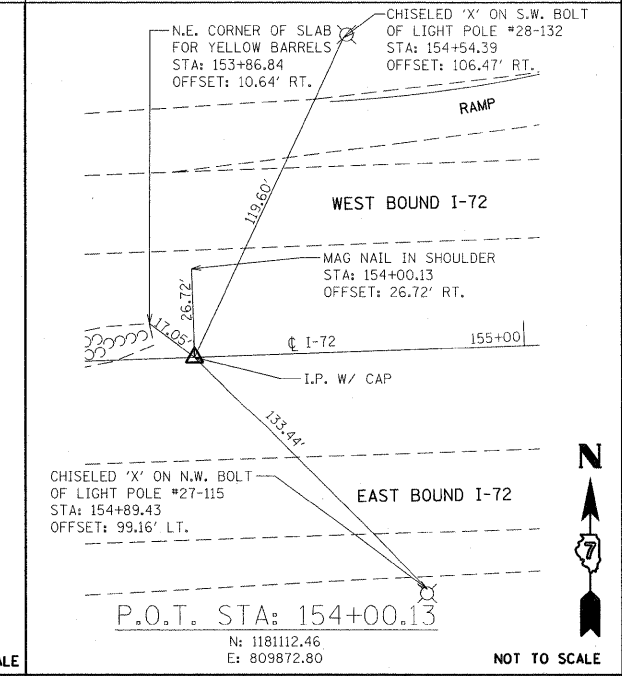
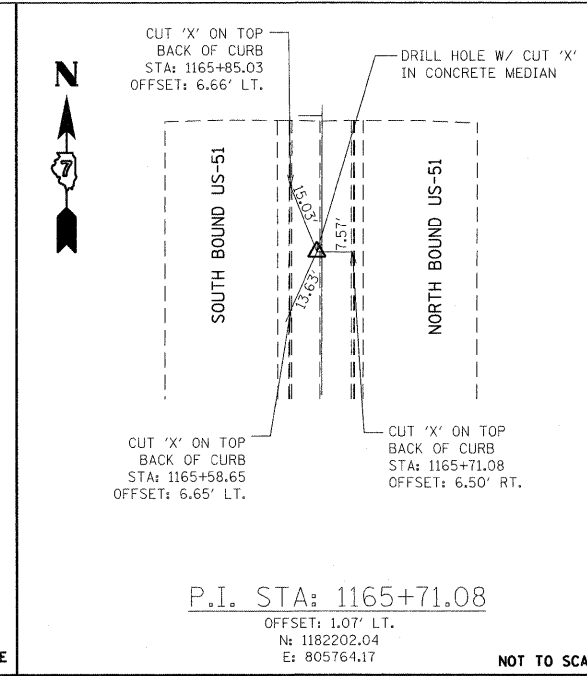
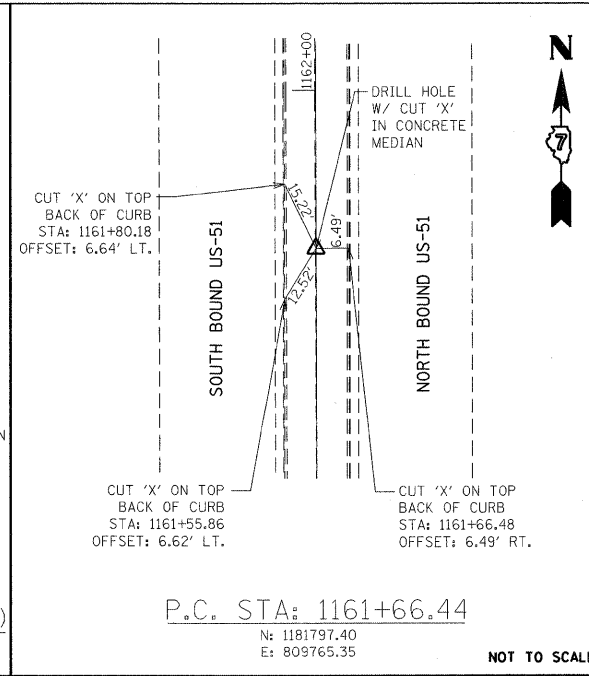
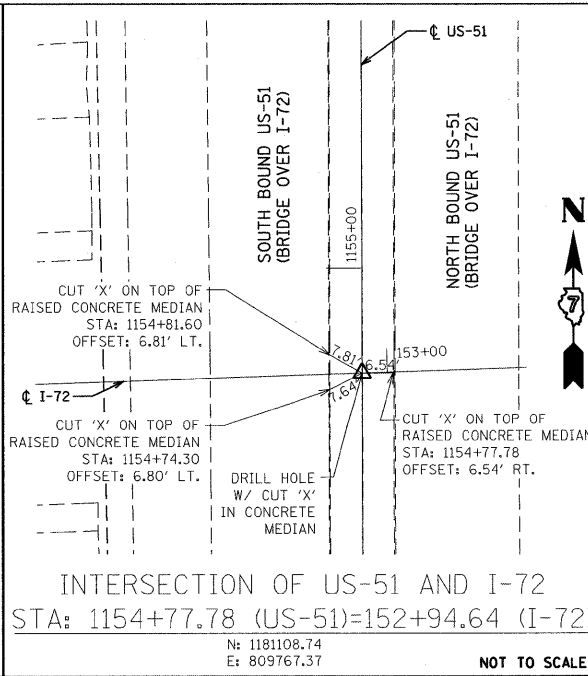
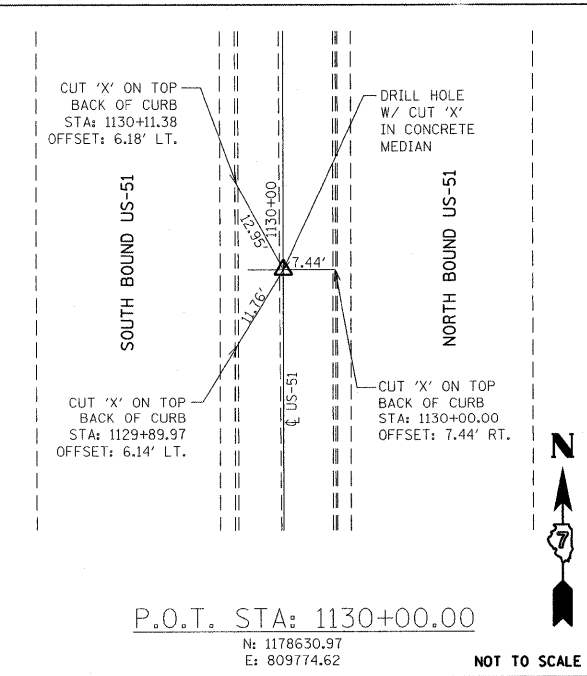
SET CHISELED SQUARE ON NORTHEAST CORNER OF EAST END CRASH WALL OF PIER OF US-51 BRIDGE OVER I-72.



EXIST. CURVE C109
 PI STA. = 1165+71.08
 $\Delta = 0^\circ 36' 22''$ (RT)
 $D = 0^\circ 04' 30''$
 $R = 76,510.44'$
 $T = 404.64'$
 $L = 809.28'$
 $E = 1.07'$
 $e =$
 $T.R. =$
 $S.E. RUN =$
 P.C. STA. = 1161+66.44
 P.T. STA. = 1169+75.72



NOTE: ALIGNMENT TIES AND BENCHMARKS WERE PROVIDED BY IDOT.



FILE NAME = P:\080276\US 51 over I-72\4-CADD\4.2-TR	USER NAME = mjoost SHEETS\0774387-sht-ATB.dgn	DESIGNED - MLS	REVISED -	STATE OF ILLINOIS DEPARTMENT OF TRANSPORTATION	ALIGNMENT TIES AND BENCHMARKS	F.A.P. RTE. 322	SECTION (58-64HB-1B-1)	COUNTY MACON	TOTAL SHEETS 149	SHEET NO. 12	
PLOT SCALE = 100.0000 / in.	CHECKED - SJK	REVISIED -	REVISIED -			US ROUTE 51		CONTRACT NO. 74387			
PLOT DATE = 3/12/2010	DATE -	REVISIED -	REVISIED -			FED. ROAD DIST. NO. 7 ILLINOIS FED. AID PROJECT					
						SCALE: SHEET NO. 1 OF 1 SHEETS STA. TO STA.					