

NOTE: REFERENCES TO YELLOW AND WHITE MEAN WET REFLECTIVE STAGING PAVEMENT MARKING TAPE, TYPE III. REMOVE ALL EXISTING PAVEMENT MARKINGS AND RAISED REFLECTIVE PAVEMENT MARKERS OR RAISED REFLECTIVE PAVEMENT REFLECTORS IN CONFLICT WITH PROPOSED STAGING PAVEMENT MARKINGS PER ENGINEER. SEE SCHEDULES FOR LIMITS OF RRPM AND RRPM REFLECTOR REMOVAL.

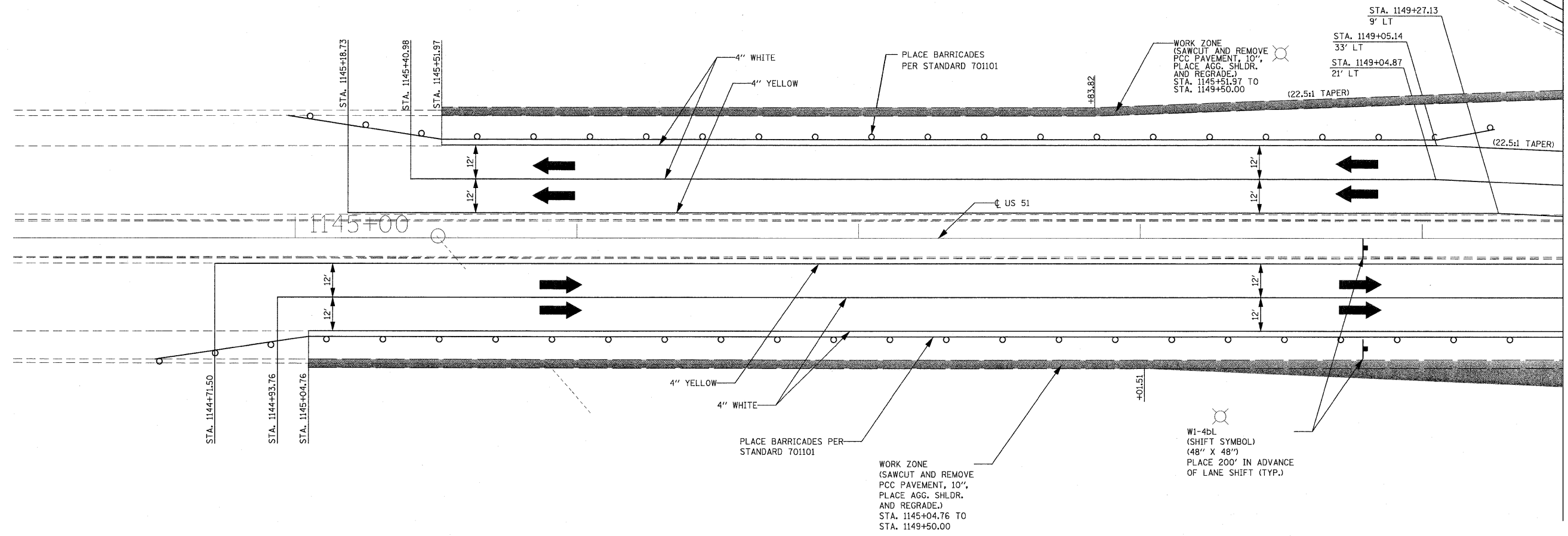
4" WHITE  
END STA. 254+40.79

4" YELLOW  
END STA. 254+40.79

TRAFFIC FLOW ARROW

WORK ZONE

TYPE II BARRICADES, DRUMS, OR VERTICAL BARRICADES W/ STEADY BURN MONODIRECTIONAL LIGHT (TYP.) @ 50' CENTERS



- NOTE: 1. FOR BOTH NORTHBOUND AND SOUTHBOUND LANES, ON BOTH THE SHOULDER AND THE MEDIAN, PLACE "ROAD CONSTRUCTION 1 MILE", 1 MILE IN ADVANCE OF WORK ZONE. PLACE WORK ZONE SPEED LIMIT SIGNAGE 500' IN ADVANCE OF WORK ZONE. PLACE "END WORK ZONE" SIGNAGE BEYOND PROJECT LIMITS.
2. SAW CUT EXCESS PORTLAND CEMENT CONCRETE PAVEMENT, 10" ALONG SHOULDER AND/OR GORE LINES AND REMOVE. SEE REMOVAL SHEETS AND CROSS SECTIONS FOR DETAILS. ALL LANE AND SHOULDER CLOSURES SHALL BE COORDINATED AND APPROVED THROUGH IDOT. THE CONTRACTOR SHALL BE RESPONSIBLE FOR COORDINATION.
3. ANY ADDITIONAL SIGNAGE REQUIRED FOR STAGE III (C) OF CONSTRUCTION THAT REQUIRE LANE OR SHOULDER CLOSURES OR DETOURS AND AS SHOWN ON PLANS SHALL BE INCLUDED IN THE LUMP SUM PAY ITEM OF TRAFFIC CONTROL AND PROTECTION - STAGE III.
4. SEE SPECIAL PROVISIONS FOR TIME FRAME OF LANE CLOSURES.
5. STANDARD 701411 SHALL BE USED ON LOOP RAMPS FOR TRAFFIC CONTROL.
6. TRAFFIC CONTROL SIGNS SHALL BE PLACED ON BOTH LEFT AND RIGHT SIDE OF PAVEMENT.
7. ALL TRAFFIC CONTROL DEVICES SHALL BE IN ACCORDANCE WITH STANDARD 701901.
8. CONTRACTOR TO MATCH PROPOSED PAVEMENT MARKING INTO THE EXISTING PAVEMENT MARKING AT EACH CORRESPONDING BEGINNING & ENDING LOCATION.

STAGE III (C) REFERENCE TRAFFIC CONTROL STANDARDS

701101-USE FOR SHOULDER WORK

701421-USE FOR TEMPORARY LANE CLOSURES - DAY ONLY

701426-USE FOR PAVING OPERATION IN TRAFFIC LANES

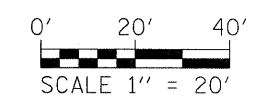
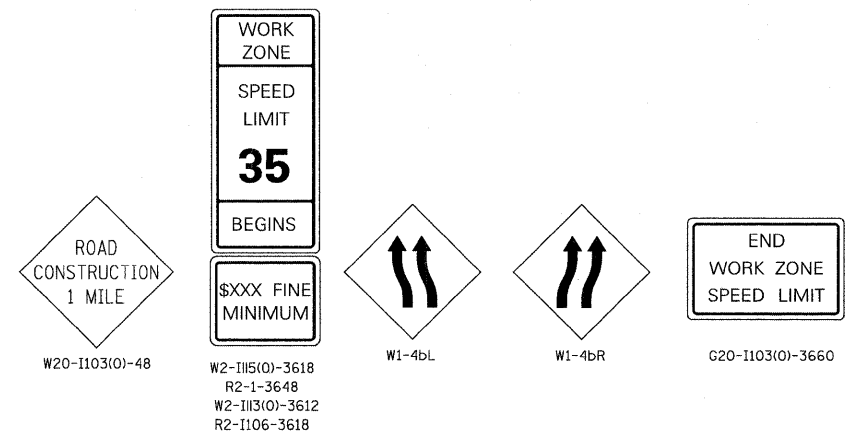
701411-USE FOR SHOULDER AND LANE CLOSURE NEAR ENTRANCE/EXIT RAMP

701901-USE FOR TRAFFIC CONTROL DEVICES

720001 & 720006-USE FOR PROPOSED CONSTRUCTION SIGNS

780001-USE FOR STAGING PAVEMENT MARKING

NOTE: THESE REFERENCED STANDARDS SHALL NOT BE PAID FOR SEPARATELY, BUT SHALL BE INCLUDED IN THE LUMP SUM COST OF TRAFFIC CONTROL AND PROTECTION - STAGE III.



FILE NAME = P:\000276\US 51 over 1-72\4-CADD\4.2-TR	USER NAME = mjoost	DESIGNED - MLS	REVISED -	<b>STATE OF ILLINOIS DEPARTMENT OF TRANSPORTATION</b>	<b>TRAFFIC CONTROL PLAN - STAGE III (C)</b>			F.A.P. RTE. 322	SECTION (58-64HB-1)B-1	COUNTY MACON	TOTAL SHEETS 149	SHEET NO. 37
	SHEETS\0774387-sh1-staging-017.dgn	DRAWN - MLS	REVISED -		SCALE: 1:20	SHEET NO. 17 OF 22 SHEETS	STA. 1144+00 TO STA. 1149+50	US ROUTE 51 CONTRACT NO. 74387				
	PLOT SCALE = 20.0000' / in.	CHECKED - SJK	REVISED -		FED. ROAD DIST. NO. 7 ILLINOIS FED. AID PROJECT							
	PLOT DATE = 3/12/2010	DATE -	REVISED -									