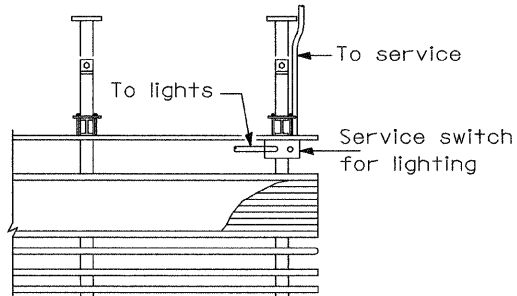
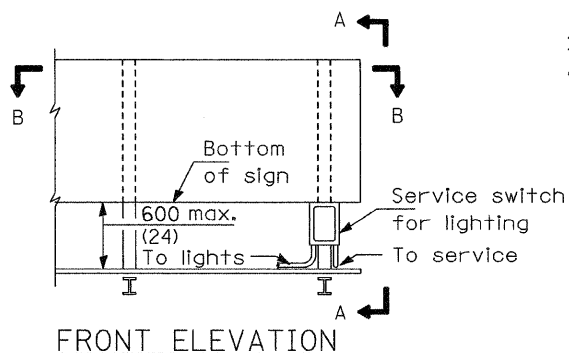
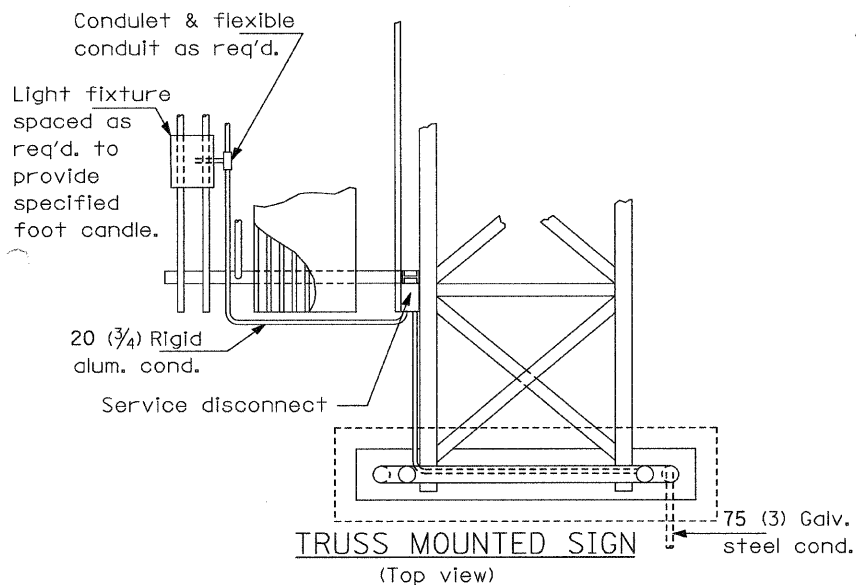
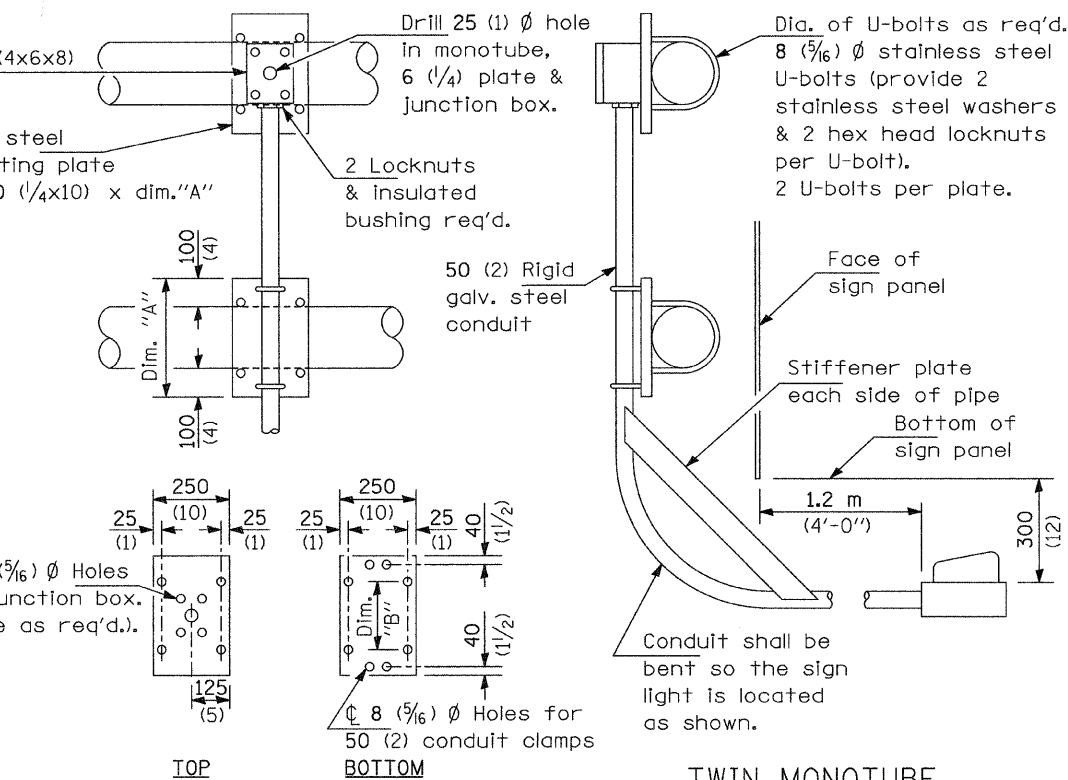
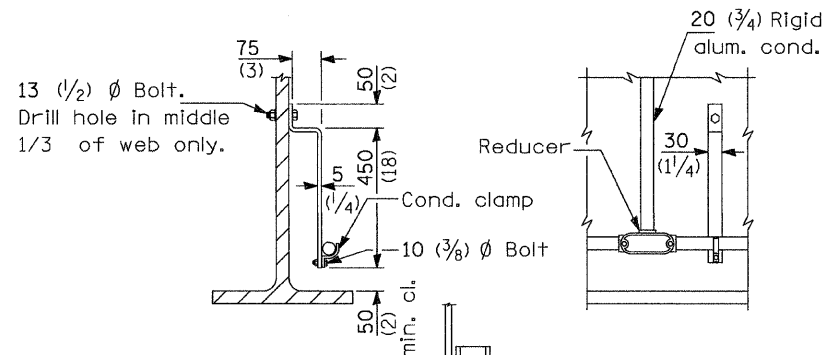


STATE OF ILLINOIS
DEPARTMENT OF TRANSPORTATION

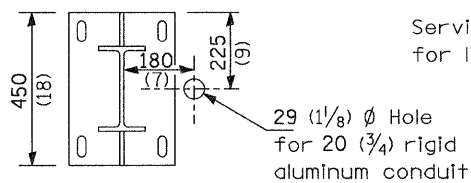


SECTION B-B

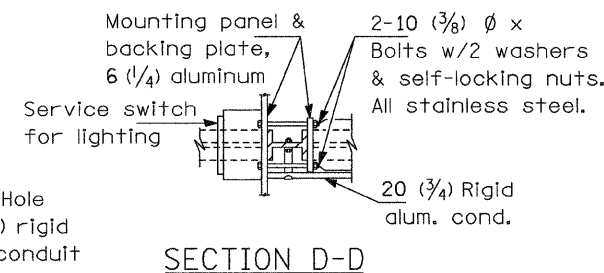


TOP
Dimension "A" = monotube dia. + 200 (8)
Dimension "B" = monotube dia. + 10 (3/8)

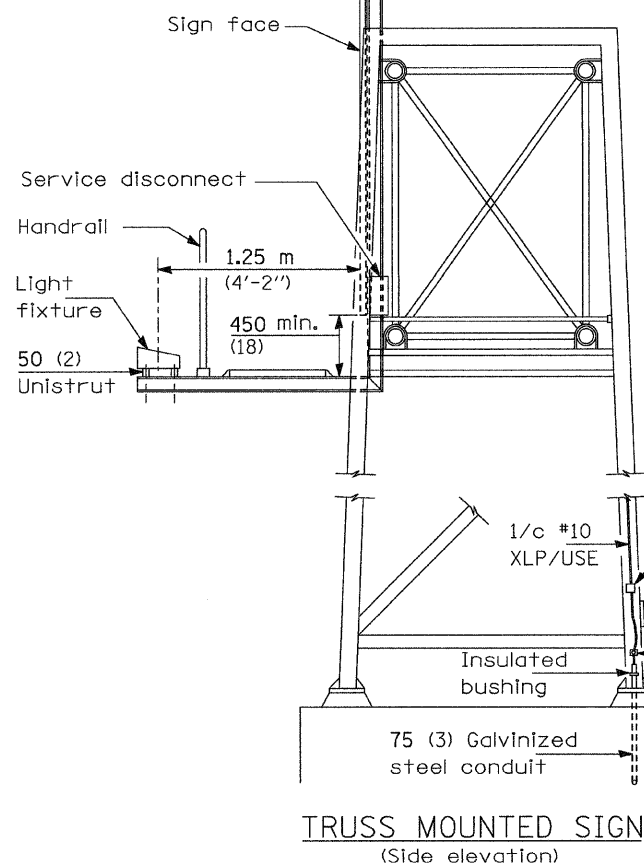
MOUNTING PLATES



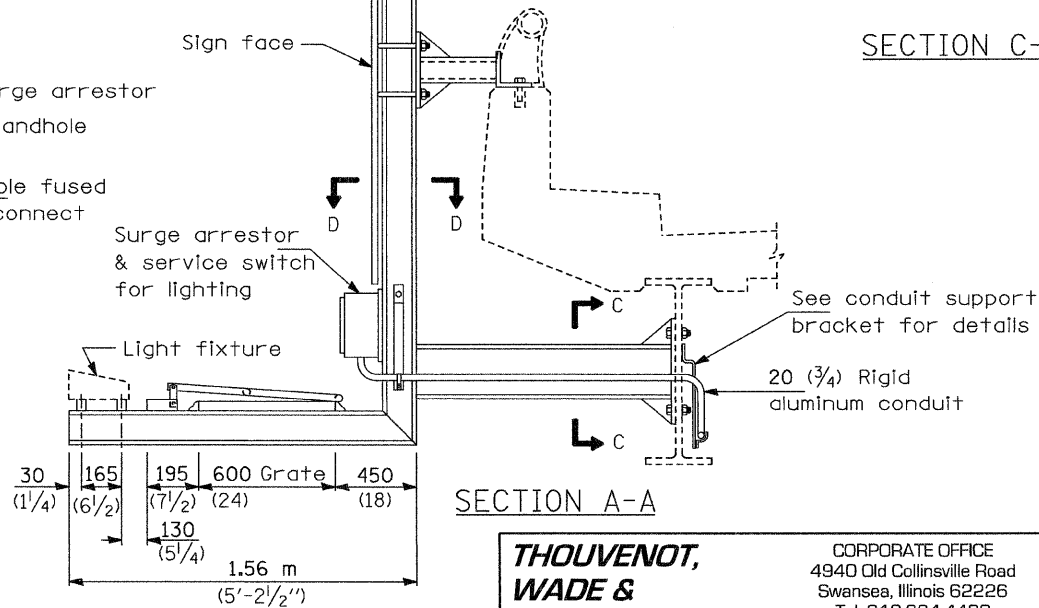
SECTION C-C



SECTION D-D



TRUSS MOUNTED SIGN
(Side elevation)



SECTION A-A

GENERAL NOTES

All sign lighting fixtures shall have a minimum of 3 mounting points.

All mounting hardware and junction boxes shall be stainless steel.

All dimensions are in millimeters (Inches) unless otherwise shown.

**SIGN LIGHTING DETAILS
WALKWAY AND CONNECTION DETAILS
US 51 OVER I-72
F.A.P. RTE. 322 - SEC. (58-64HB-1)B-1
MACON COUNTY
STA. 1154+77.78
SN 058-0136**

**THOUVENOT,
WADE &
MOERCHEN, INC.**
CORPORATE OFFICE
4940 Old Collinsville Road
Swansea, Illinois 62226
Tel: 618.624.4488
Fax: 618.624.6688
SWANSEA • WATERLOO • EDWARDSVILLE • CARBONDALE • ST. CHARLES



SHEET NO. 8
9 SHEETS

F.A.P. RTE.	SECTION	COUNTY	TOTAL SHEETS	SHEET NO.
322	(58-64HB-1)B-1	MACON	149	58
CONTRACT NO. 74387				
FED. ROAD DIST. NO. - ILLINOIS FED. AID PROJECT				