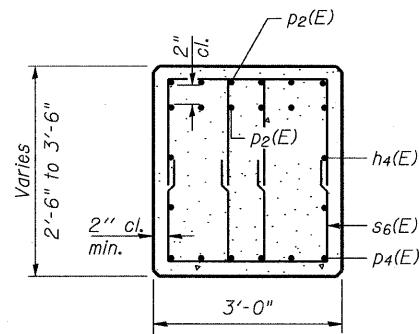
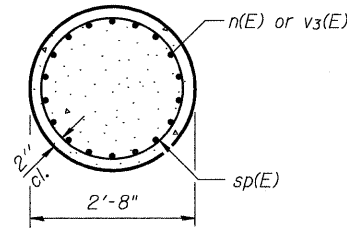


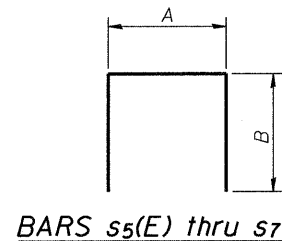
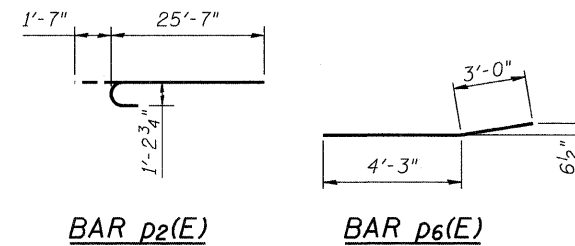
SEC. A-A



SEC. C-C



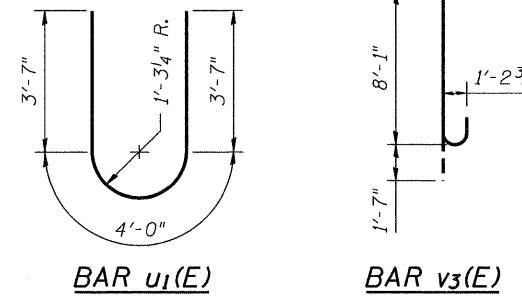
SEC. B-B



BARS s5(E) thru s7(E)

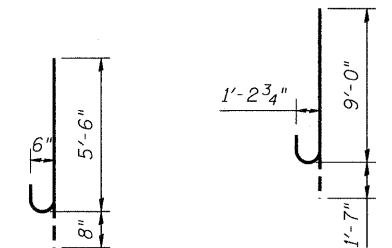
A & B DIMENSIONS

| Bar   | A     | B     |
|-------|-------|-------|
| s5(E) | 2'-8" | 1'-8" |
| s6(E) | 1'-8" | 2'-1" |
| s7(E) | 2'-8" | 7'-0" |



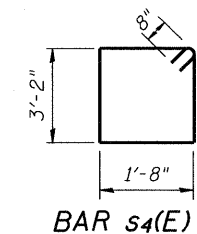
BAR u1(E)

BAR v3(E)

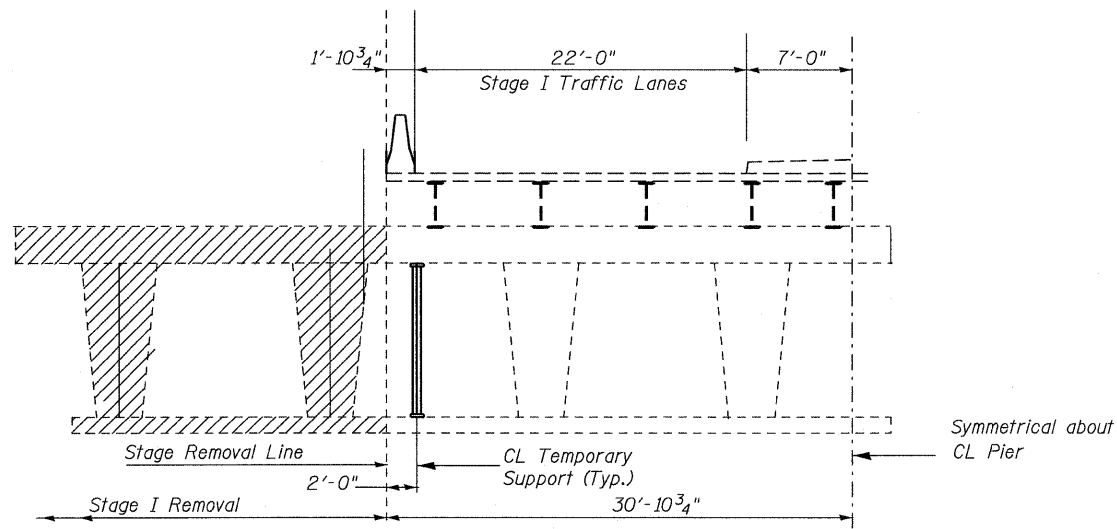


BAR n1(E)

BAR n(E)



BAR s4(E)

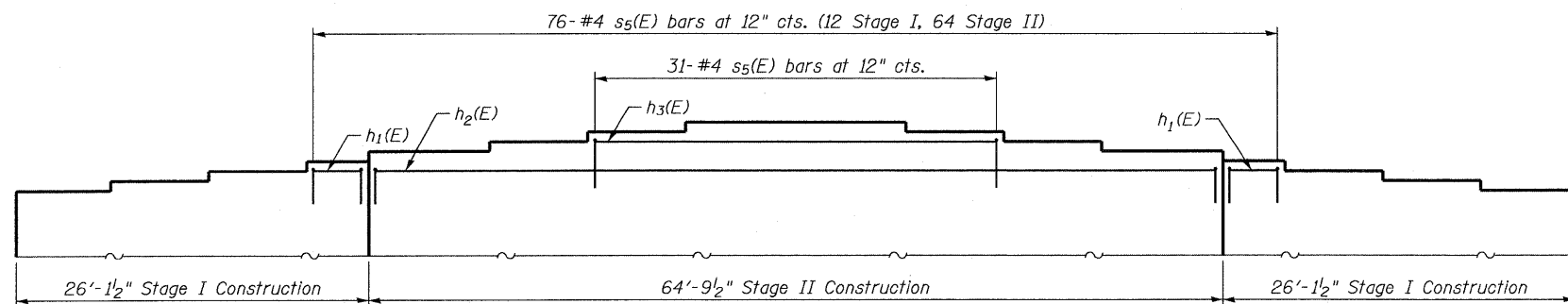


TEMPORARY SUPPORT SYSTEM

(Looking North)

Notes:

The Temporary Support System shall consist of one support at each end of the existing pier cap to remain in place for Stage I Traffic and shall be in place prior to stage I Removal. Each Temporary Support shall be capable of supporting a vertical load of 230 kips and a lateral load of 25 kips. See Special Provisions for Temporary Support System. Cost of furnishing and installing Temporary Support System is included with the pay item Temporary Support System.



STEP REINFORCEMENT DETAIL

(Showing s5(E) bars)

BILL OF MATERIAL

| Bar                              | No. | Size    | Length | Shape |
|----------------------------------|-----|---------|--------|-------|
| h1(E)                            | 4   | #5      | 5'-2"  | —     |
| h2(E)                            | 4   | #5      | 34'-0" | —     |
| h3(E)                            | 2   | #5      | 30'-0" | —     |
| h4(E)                            | 8   | #5      | 24'-4" | —     |
| h5(E)                            | 8   | #5      | 33'-8" | —     |
| h6(E)                            | 28  | #6      | 19'-0" | —     |
| h7(E)                            | 28  | #6      | 34'-0" | —     |
| h8(E)                            | 16  | #9      | 19'-0" | —     |
| h9(E)                            | 16  | #9      | 36'-4" | —     |
| n(E)                             | 144 | #11     | 10'-7" | U     |
| n1(E)                            | 6   | #6      | 6'-2"  | U     |
| p2(E)                            | 24  | #11     | 27'-2" | U     |
| p3(E)                            | 12  | #11     | 31'-4" | —     |
| p4(E)                            | 12  | #10     | 21'-9" | —     |
| p5(E)                            | 6   | #10     | 26'-8" | —     |
| p6(E)                            | 12  | #7      | 7'-3"  | —     |
| p7(E)                            | 6   | #10     | 36'-0" | —     |
| s4(E)                            | 394 | #5      | 11'-0" | □     |
| s5(E)                            | 107 | #4      | 6'-0"  | U     |
| s6(E)                            | 80  | #5      | 5'-10" | U     |
| s7(E)                            | 356 | #6      | 16'-8" | U     |
| sp(E)                            | 8   | #4      | 14'-0" | ~     |
| I1(E)                            | 166 | #7      | 8'-8"  | —     |
| u1(E)                            | 24  | #6      | 11'-2" | U     |
| v3(E)                            | 144 | #11     | 9'-8"  | U     |
| v4(E)                            | 6   | #6      | 7'-5"  | —     |
| w2(E)                            | 20  | #6      | 22'-1" | —     |
| w3(E)                            | 20  | #6      | 33'-9" | —     |
| Concrete Structures              |     | Cu. Yd. | 254.3  |       |
| Reinforcement Bars, Epoxy Coated |     | Pound   | 51,600 |       |
| Bar Splicers                     |     | Each    | 72     |       |
| Mechanical Splicers              |     | Each    | 180    |       |
| Structure Excavation             |     | Cu. Yd. | 67     |       |
| Steel Piles HP 14X73             |     | Foot    | 3551   |       |
| Test Piles Steel HP 14x73        |     | Each    | 1      |       |
| Driving Piles                    |     | Foot    | 3551   |       |
| Concrete Encasement              |     | Cu. Yd. | 29.5   |       |

\* Length is height of spiral.

Note:  
The Contractor shall verify the length of the p2(E), p3(E) and p4(E) bars to assure they are satisfactory with the type of mechanical splicers used.

PIER DETAILS  
STRUCTURE NO. 058-0136

|  |  |                           |  |   |
|--|--|---------------------------|--|---|
| <p>Coombe-Bloxdorf P.C.<br/>-CIVIL ENGINEERS-<br/>-STRUCTURAL ENGINEERS-<br/>-LAND SURVEYORS-<br/>Design Firm License No. 184-002703</p> | PROJECT NO. 08052-6<br>SCALE<br>DATE 1/18/10<br>DESIGN BY BD<br>DRAWN BY CFC<br>CHECKED BY MCB | SHEET NO. 28<br>36 SHEETS | F.A.P RTE. 322<br>SECTION (58-64HB-1)B-1<br>COUNTY MACON<br>TOTAL SHEETS 149<br>SHEET NO. 87 | CONTRACT NO. 74387<br>FED. ROAD DIST. NO. ILLINOIS FED. AID PROJECT |
|--|--|---------------------------|--|---|