

STANDARD BAR SPLICER ASSEMBLY

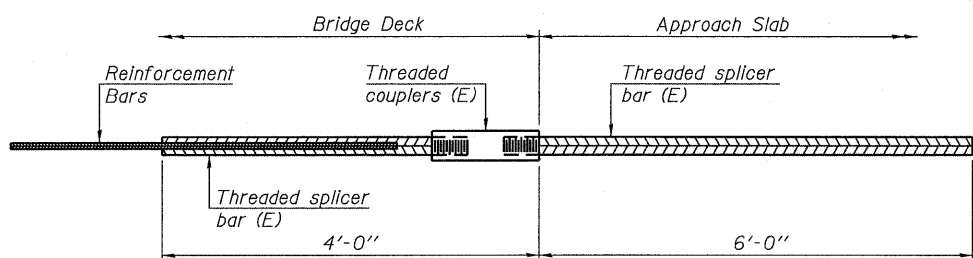
Minimum Lap Lengths				
Bar size to be spliced	Table 1	Table 2	Table 3	Table 4
3, 4	1'-5"	1'-11"	2'-1"	2'-4"
5	1'-9"	2'-5"	2'-7"	2'-11"
6	2'-1"	2'-11"	3'-1"	3'-6"
7	2'-9"	3'-10"	4'-2"	4'-8"
8	3'-8"	5'-1"	5'-5"	6'-2"
9	4'-7"	6'-5"	6'-10"	7'-9"

- Table 1: Black bar, 0.8 Class C
- Table 2: Black bar, Top bar lap, 0.8 Class C
- Table 3: Epoxy bar, 0.8 Class C
- Table 4: Epoxy bar, Top bar lap, 0.8 Class C

Threaded splicer bar length = min. lap length + 1 1/2" + thread length

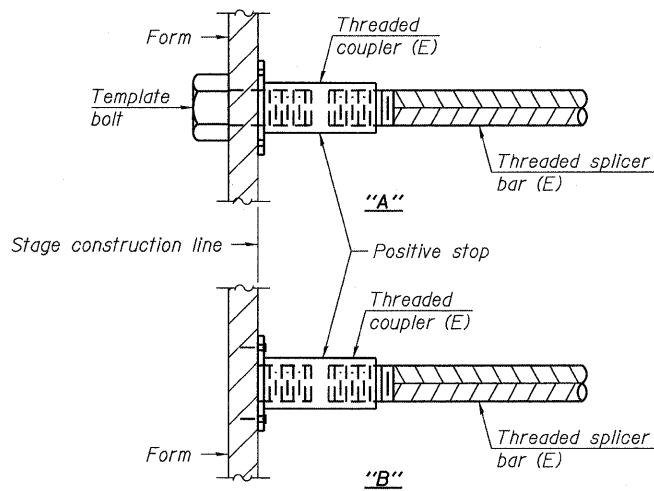
* Epoxy not required on Bar Splicer Assembly components used in conjunction with black bars.

Location	Bar size	No. assemblies required	Table for minimum lap length
Slab	#5	1786	3
Diaphragms	#6	32	4
Approach Slab	#4	96	3
Approach Slab	#5	180	3
Approach Footing	#5	160	3
Abutments	#7	48	4
Pier Crashwall	#9	16	4
Pier Crashwall	#5	28	4
Pier Footings	#6	20	3
Pier Cap	#5	8	4



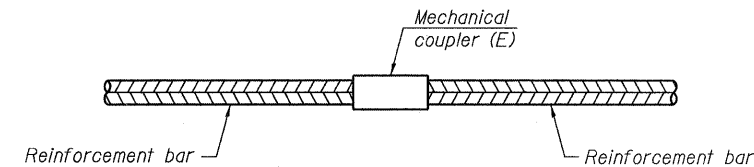
BAR SPLICER ASSEMBLY FOR #5 BAR ON INTEGRAL OR SEMI-INTEGRAL ABUTMENTS

No. required = 234



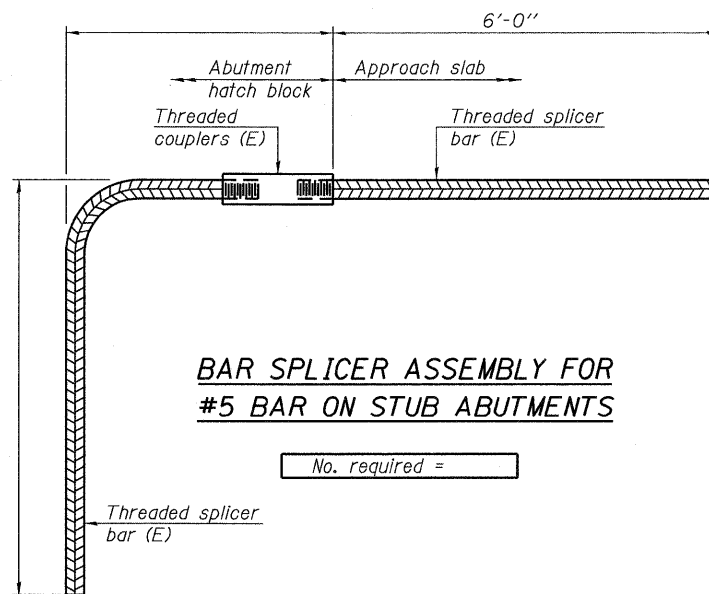
INSTALLATION AND SETTING METHODS

"A": Set bar splicer assembly by means of a template bolt.
 "B": Set bar splicer assembly by nailing to wood forms or cementing to steel forms.
 (E) : Indicates epoxy coating.



STANDARD MECHANICAL SPLICER

Location	Bar size	No. assemblies required
Pier Cap	#11	18
Pier Cap	#10	18
Pier Columns	#11	144



BAR SPLICER ASSEMBLY FOR #5 BAR ON STUB ABUTMENTS

No. required =

NOTES

Splicer bars shall be deformed with threaded ends and have a minimum 60 ksi yield strength.
 All reinforcement shall be lapped and tied to the splicer bars.
 Bar splicer assemblies shall be epoxy coated according to the requirements for reinforcement bars. See Section 508 of the Standard Specifications.
 See special provision for Mechanical Splicers.
 See approved list of bar splicer assemblies and mechanical splicers for alternatives.

**BAR SPLICER ASSEMBLY AND MECHANICAL SPLICER DETAILS
 STRUCTURE NO. 058-0136**

<p>Coombe-Bloxdorf P.C. -CIVIL ENGINEERS- -STRUCTURAL ENGINEERS- -LAND SURVEYORS- Design Firm License No. 184-002703</p>	PROJECT NO. 08052-6 SCALE DATE 12/09/09 DESIGN BY BD/MCB DRAWN BY TFC CHECKED BY MCB	SHEET NO. 30 36 SHEETS	F.A.P. RTE. 322 SECTION (58-64HB-1)B-1 COUNTY MACON FEDERAL ROAD DIST. NO. 7 ILLINOIS	COUNTY MACON TOTAL SHEETS 149 FEDERAL AID PROJECT	SHEET NO. 89 CONTRACT NO. 74387
--	---	---------------------------	--	---	------------------------------------