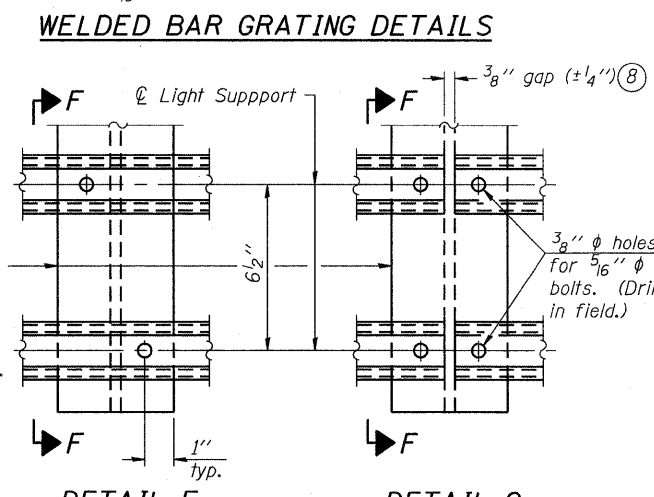
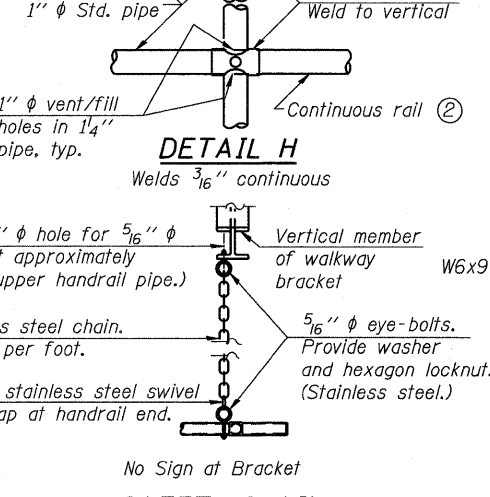
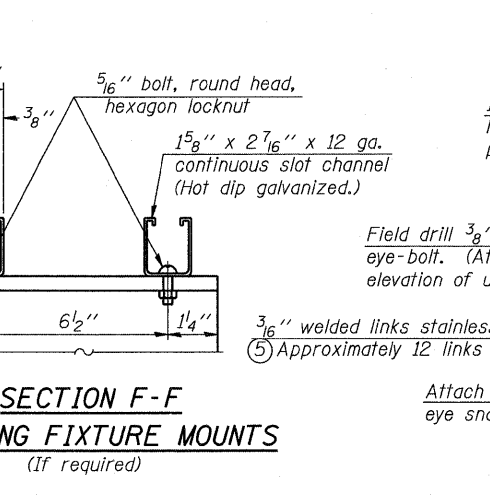
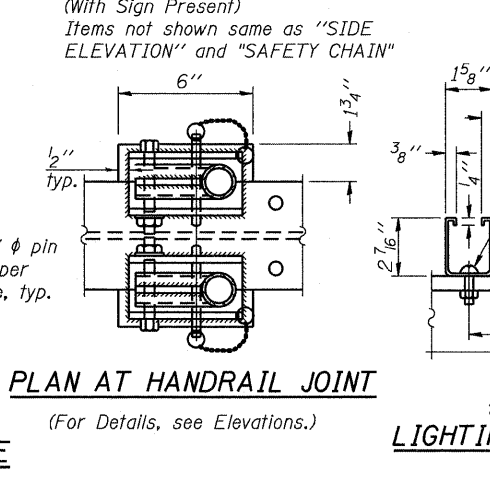
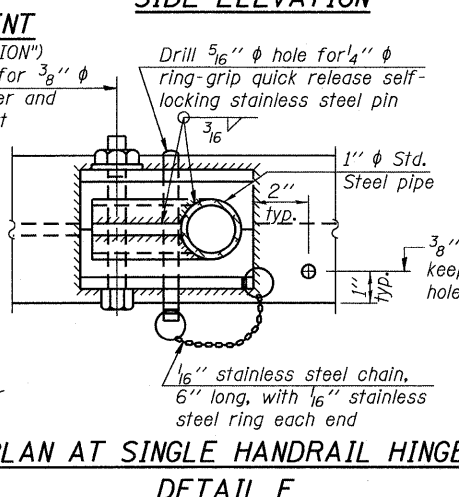
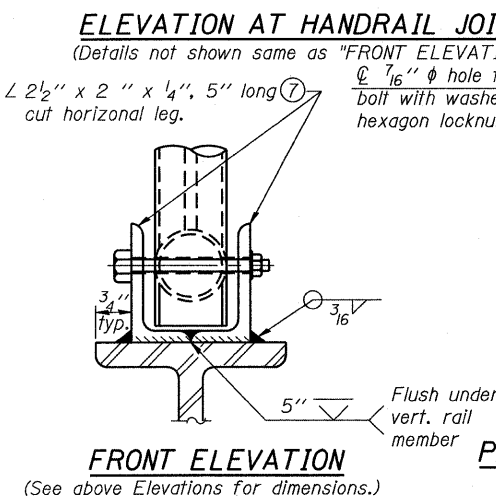
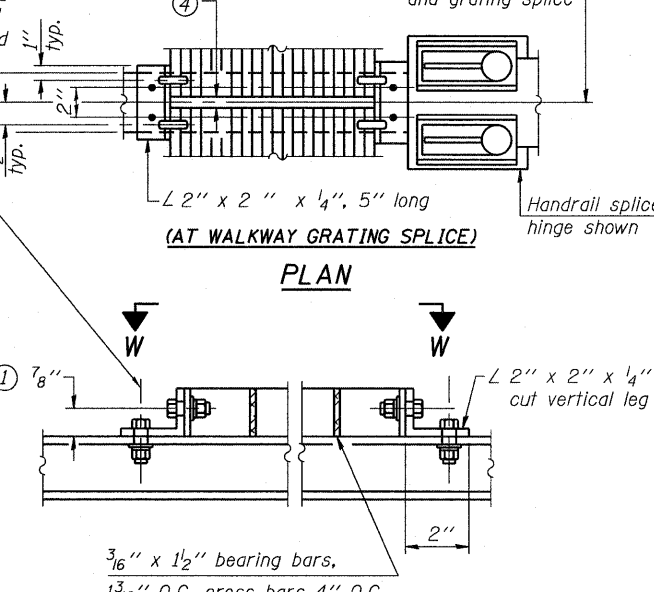
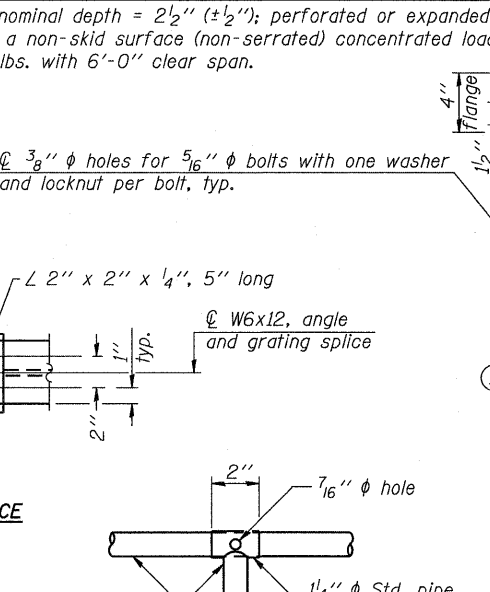
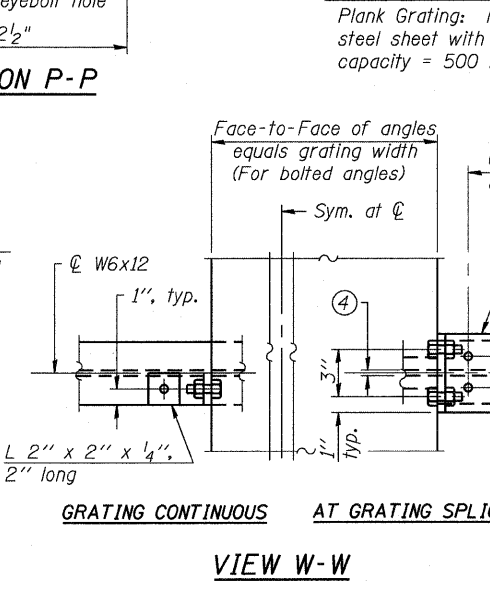
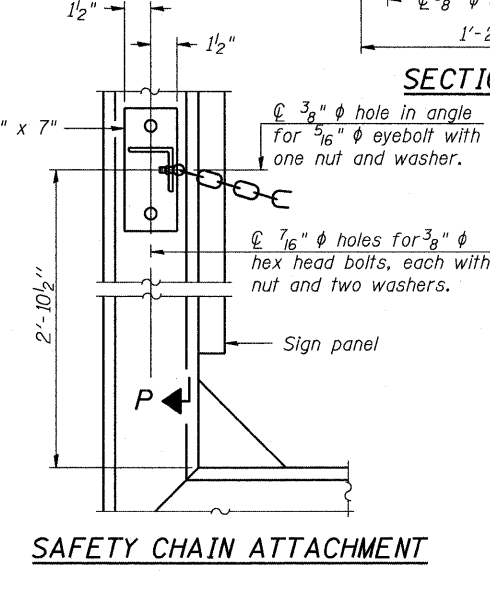
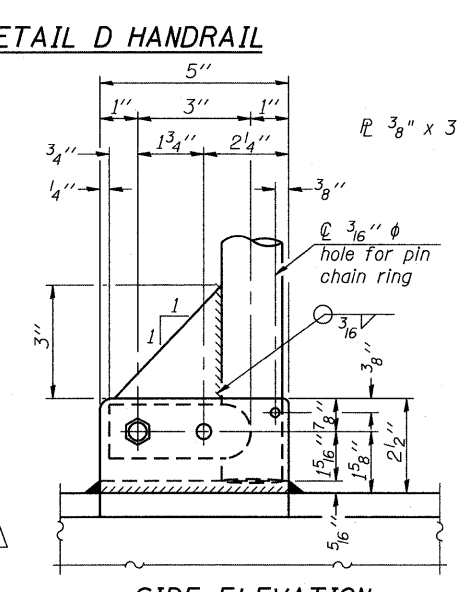
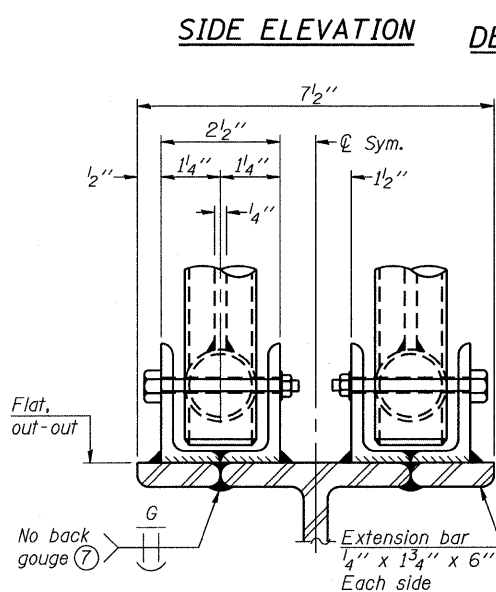
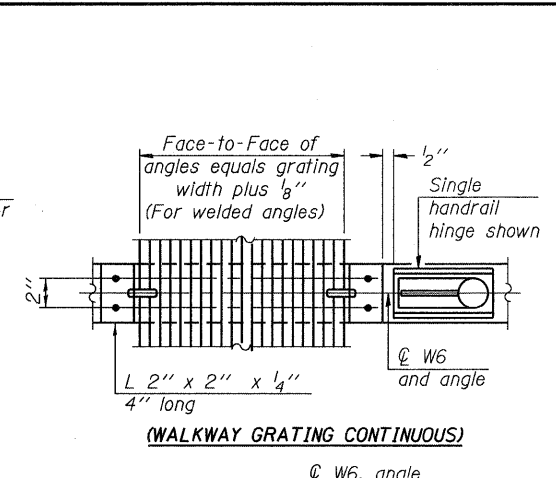
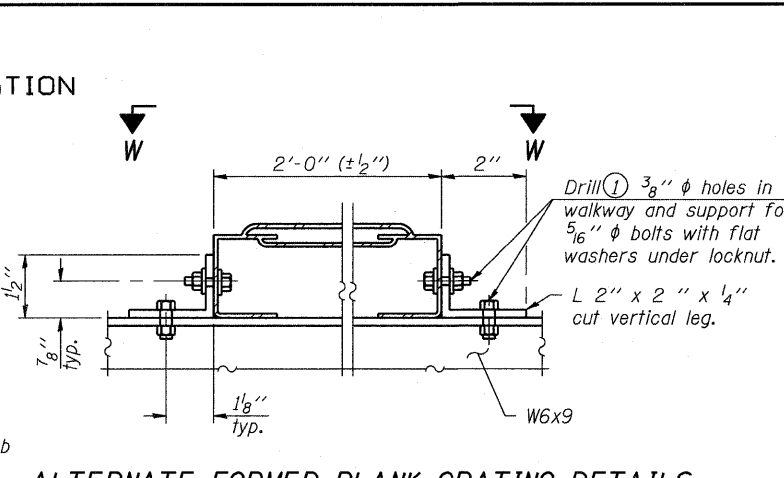
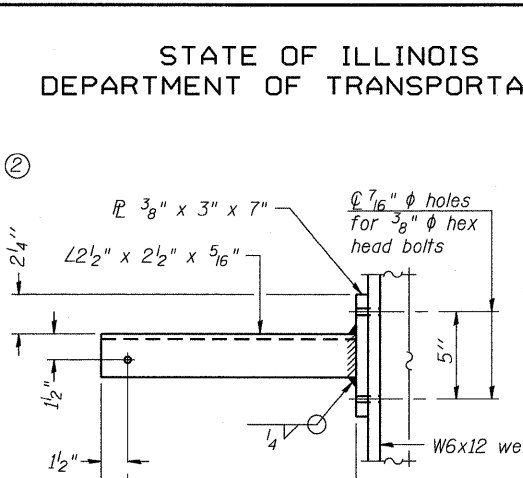
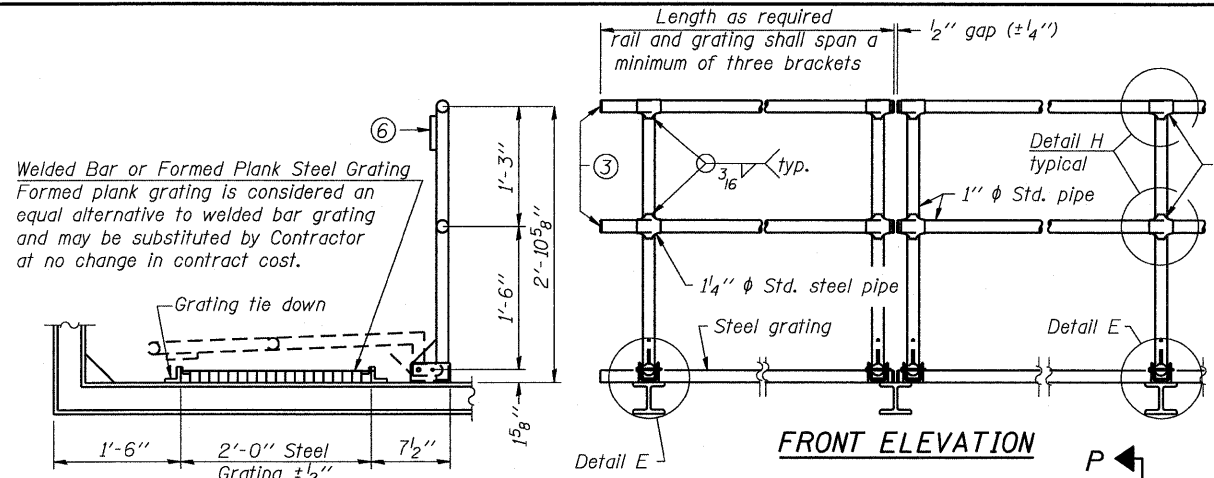


STATE OF ILLINOIS
DEPARTMENT OF TRANSPORTATION



NUMBER	REVISION	DATE

DESIGNED JTH	200
CHECKED SJK	EXAMINED
DRAWN JTH	ENGINEER OF BRIDGE DESIGN
CHECKED SJK	PASSED
BM-4	ENGINEER OF BRIDGES AND STRUCTURES

- DETAIL E
- Drilling holes in grating may be done in shop or field, based on Contractor's preference and subject to accurate alignment. Field drilled holes must be touched up with galvanized paint.
 - Horizontal rail member shall be continuous thru 1 1/4" φ pipe. Provide 7/16" φ hole in 1 1/4" φ pipe for 3/8" φ bolt. Field drill 7/16" φ hole in horizontal rail member. Provide washer and locknut for bolt. (Use 5/16" eyebolts in 7/16" φ holes on top rail at ends only.)
 - Install standard force-fit end caps or weld 1/8" end plates with 1/8" c.f.w. and grind smooth. (All rail ends.)
 - 3/8" (±1/4") gap between grating panels at splice.

- NOTES
- Chain to be type 304L stainless steel suitable for prolonged exterior exposure. Approximately 3'-6" long chain per location. Maximum sag with handrail erected = 4".
 - 1 1/8" x 1/2" x 2" welded to handrail posts to protect locations that contact grating.
 - Extrusions may be used in lieu of details shown, with approval by Engineer.
 - Field cut ends of light support channels shall be free of burrs or hazardous projections and coated with zinc-rich primer or equivalent.

- One (1) required for each end of each walkway.

SHEET NO. 5	F.A.P. RTE. 322	SECTION (58-64HB-1)B-1	COUNTY MACON	TOTAL SHEETS 149	SHEET NO. 100
15 SHEETS	US ROUTE 51		CONTRACT NO. 74387		
FED. ROAD DIST. NO. 7		ILLINOIS		FED. AID PROJECT	

**BRIDGE MOUNT SIGN STRUCTURES
WALKWAY DETAILS**

**THOUVENOT,
WADE &
MOERCHEN, INC.**
CORPORATE OFFICE
4940 Old Collinsville Road
Swansea, Illinois 62226
Tel: 618.624.4488
Fax: 618.624.8688
SWANSEA • WATERLOO • EDWARDSVILLE • CARBONDALE • ST. CHARLES

TWM
ENGINEERS • SURVEYORS • PLANNERS

3/15/2010 4:25:05 PM
Plotted by: mloast