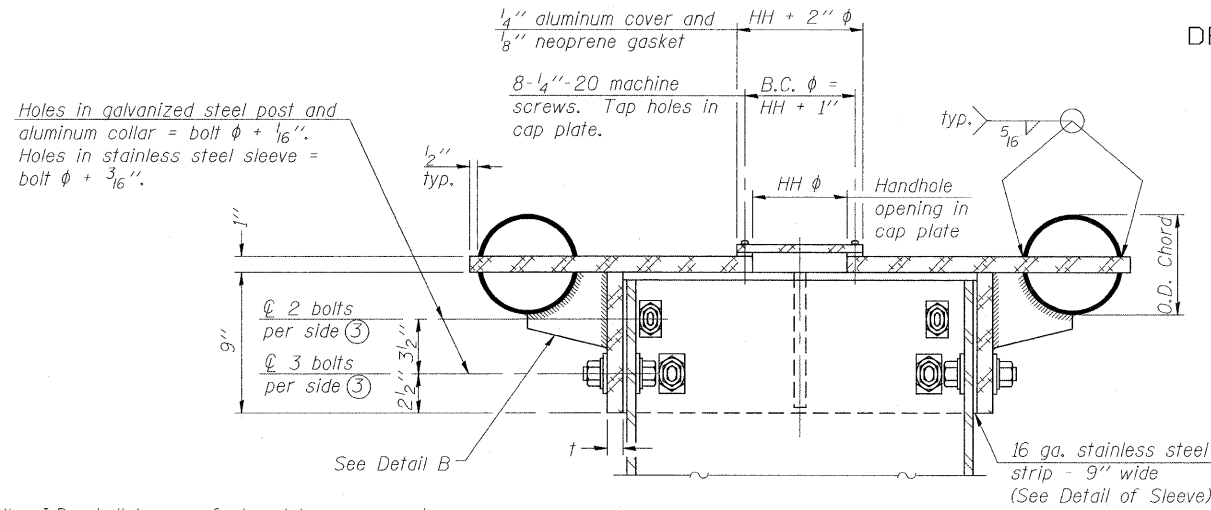
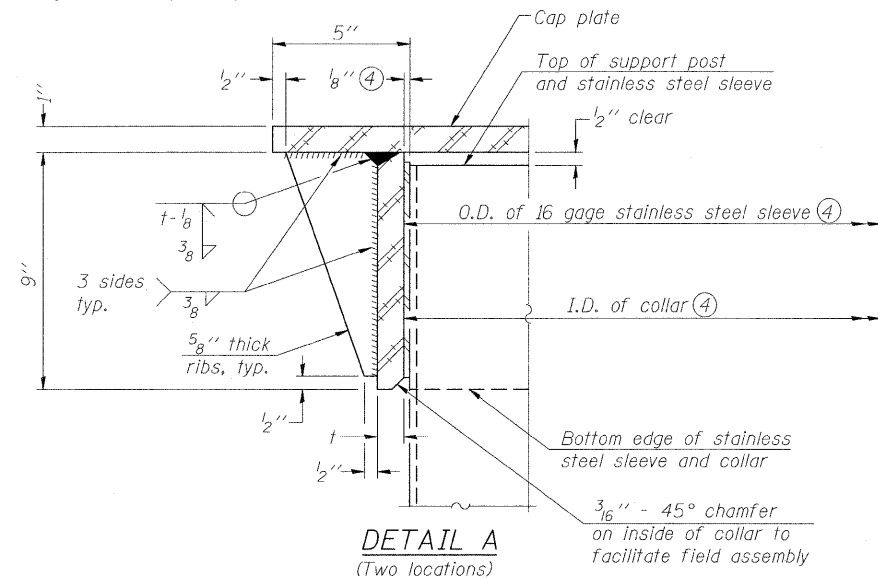


STATE OF ILLINOIS  
DEPARTMENT OF TRANSPORTATION



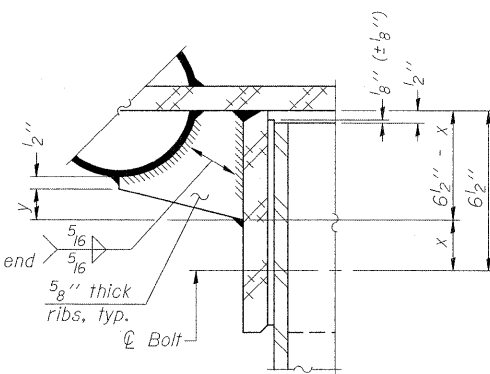
④ Collar I.D. shall be manufactured to correspond to O.D. of actual galvanized post and stainless steel sleeve plus 1/8 inch (±1/16 inch). Maximum gap between post and collar at any location equals 1/8 inch before tightening bolts.



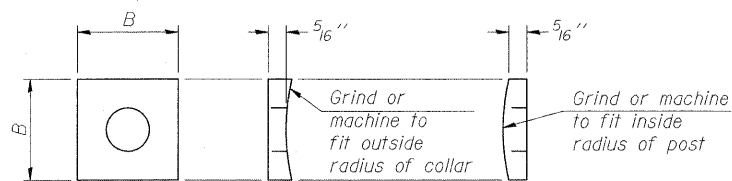
DETAIL A  
(Two locations)

Bolts, washers (including contoured washers), and locknuts shall be stainless steel.

SECTION B-B



DETAIL B  
Two locations  
(For details not shown, see Detail C)



CONTOURED WASHERS

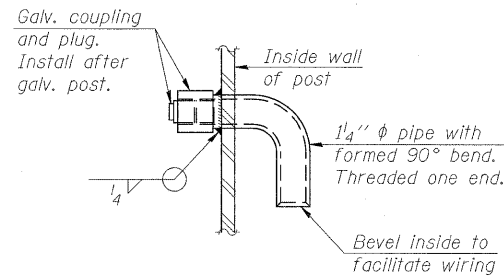
Bolt Size	Contoured Washers	
	Hole Dia.	B
7/8"	1"	2 1/2"
1"	1 1/8"	3"
1 1/4"	1 3/8"	3 1/4"

DETAIL OF STAINLESS STEEL SLEEVE

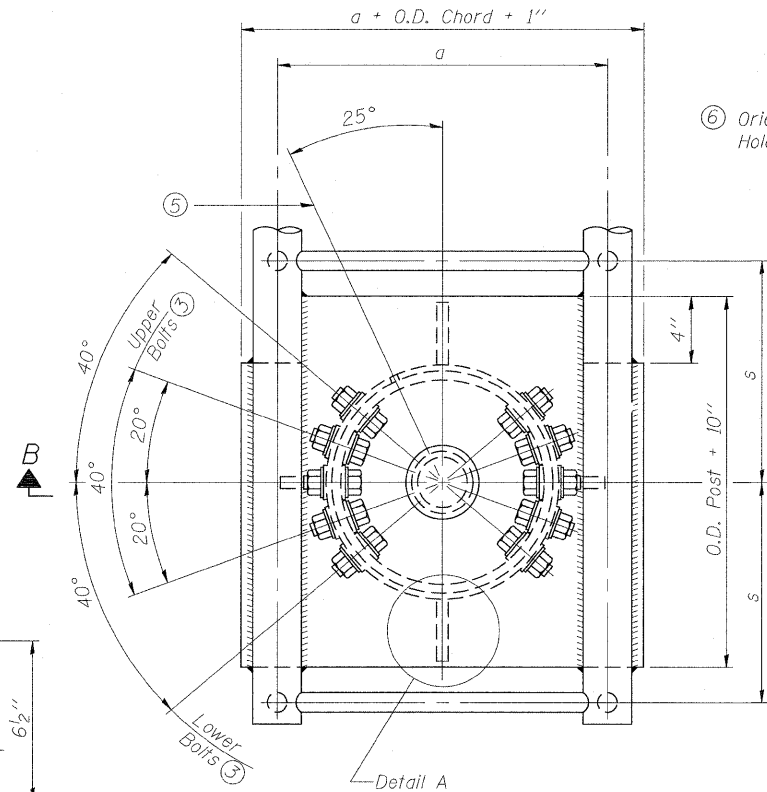
Weld to post after galvanizing. (Prepare post surface to insure tight, uniform fit and allow welding.) Welds to be 1/2 inch long at 6 inch cts. along top edge and at 1/4 inch opening.

NUMBER	REVISION	DATE

DETAIL D

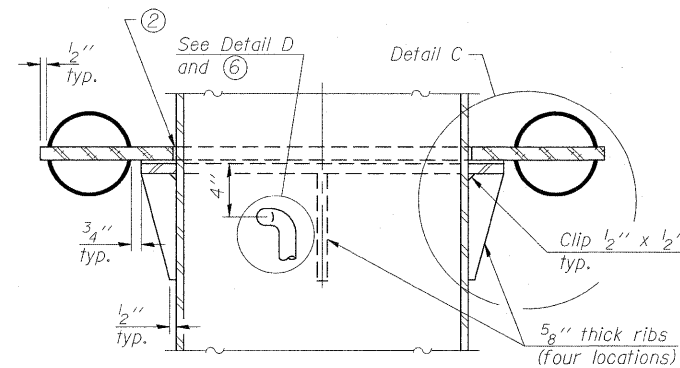


DETAIL D

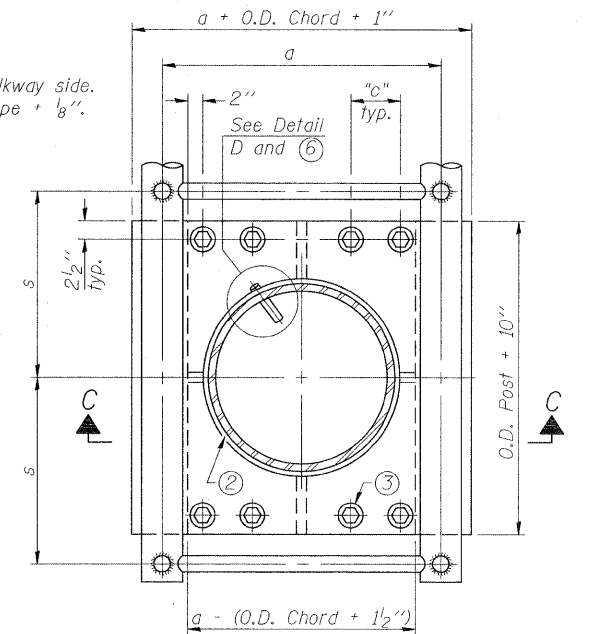


PLAN VIEW - TOP OF COLUMN

⑤ Optional full penetration weld in collar. (Two locations maximum...180 degrees apart)...X-ray or UT 100%

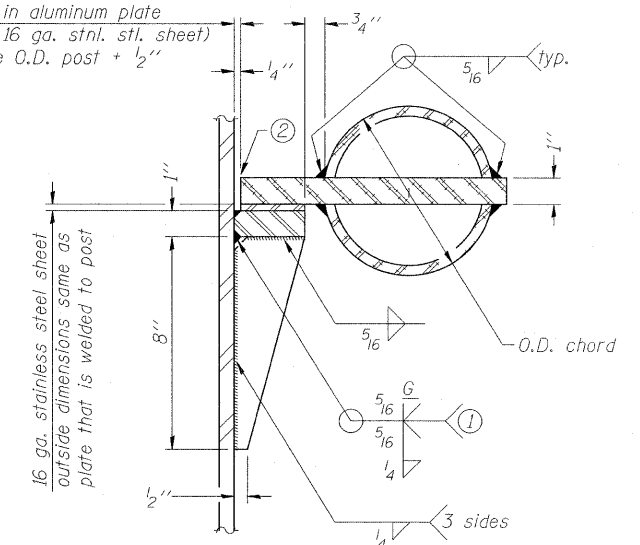


SECTION C-C



SECTION THRU POST ABOVE LOWER CHORDS

Hole in aluminum plate (and 16 ga. stnl. stl. sheet) to be O.D. post + 1/2 inch



DETAIL C

① Grind top if required to fully seat aluminum plate and stainless steel sheet.

② After tightening lower connection bolts, fill gap with non-hardening, silicone caulk suitable for exterior exposure and acceptable to the Engineer. Cost is included in Overhead Sign Structure Cantilever.

Truss Type	Post Size	Upper & Lower Connection Bolt Diameter ③	Lower Juncture Bolt Spacing Dimension "c" ③	Opening in Cap Plate "HH"	Collar Thickness (t)	Side Ribs	
						x	y
I-C-A	16" phi (83#/')	7/8"	3 1/4"	8"	5/8"	1 3/4"	2 1/4"
II-C-A	24" phi (125#/')	1"	3 1/2"	12"	7/8"	2"	1 1/4"
III-C-A (35' max.)	24" phi (125#/')	1 1/4"	3 1/2"	12"	7/8"	2"	1"
III-C-A (>35' to 40')	24" phi (171#/')	1 1/4"	3 1/2"	12"	7/8"	2"	1"

③ Upper and lower connection bolts in collar and bolts at lower chord connection shall be high strength with matching locknuts. Connection bolts shall have 2 stainless steel flat washers each.

DESIGNED MJJ	200
CHECKED JTH	EXAMINED
DRAWN MJJ	PASSED
CHECKED JTH/ALN	ENGINEER OF BRIDGE DESIGN
	ENGINEER OF BRIDGES AND STRUCTURES

OSC-A-3 12-1-08

CANTILEVER SIGN STRUCTURES JUNCTURE DETAILS ALUMINUM TRUSS & STEEL POST				
THOUVENOT, WADE & MOERCHEN, INC. SWANSEA • WATERLOO • EDWARDSVILLE • CARBONDALE • ST. CHARLES		CORPORATE OFFICE 4940 Old Collinsville Road Swansea, Illinois 62226 Tel: 618.624.4488 Fax: 618.624.6888		
F.A.P. RTE. 322	SECTION (58-64HB-1)B-1	COUNTY MACON	TOTAL SHEETS 149	SHEET NO. 104
SHEET NO. 9		US ROUTE 51		CONTRACT NO. 74387
15 SHEETS				
FED. ROAD DIST. NO. 7 ILLINOIS FED. AID PROJECT				