

STATE OF ILLINOIS
DEPARTMENT OF TRANSPORTATION
DIVISION OF HIGHWAYS

**PROPOSED
HIGHWAY PLANS**

FAP ROUTE 325 (ILL 16)
SECTION D7 HMA SAFETY SHLD 2010-2
PROJECT ACHSIP-0325(053)
SAFETY IMPROVEMENTS
SHELBY COUNTY

C-97-055-10

FOR INDEX OF SHEETS, SEE SHEET NO. 2

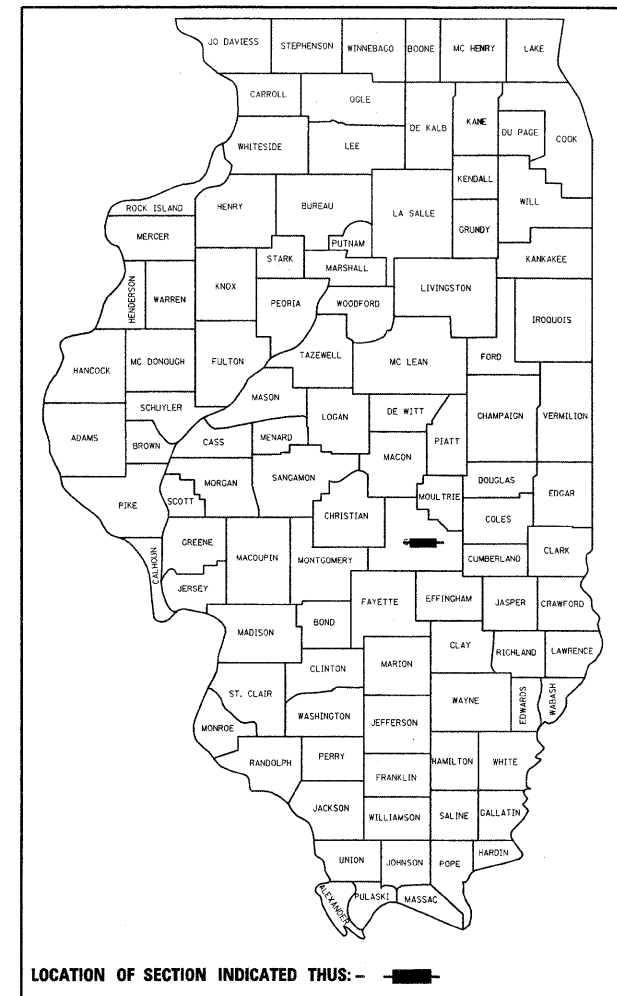
ADT = 4750 (2010)

BRIDGE OMISSION
STR. NO. 087-0024 - 65'

F.A.P. RTE.	SECTION	COUNTY	TOTAL SHEETS	SHEET NO.
325		Shelby	8	1
		ILLINOIS	CONTRACT NO. 74444	

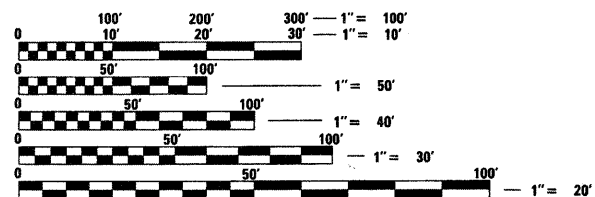
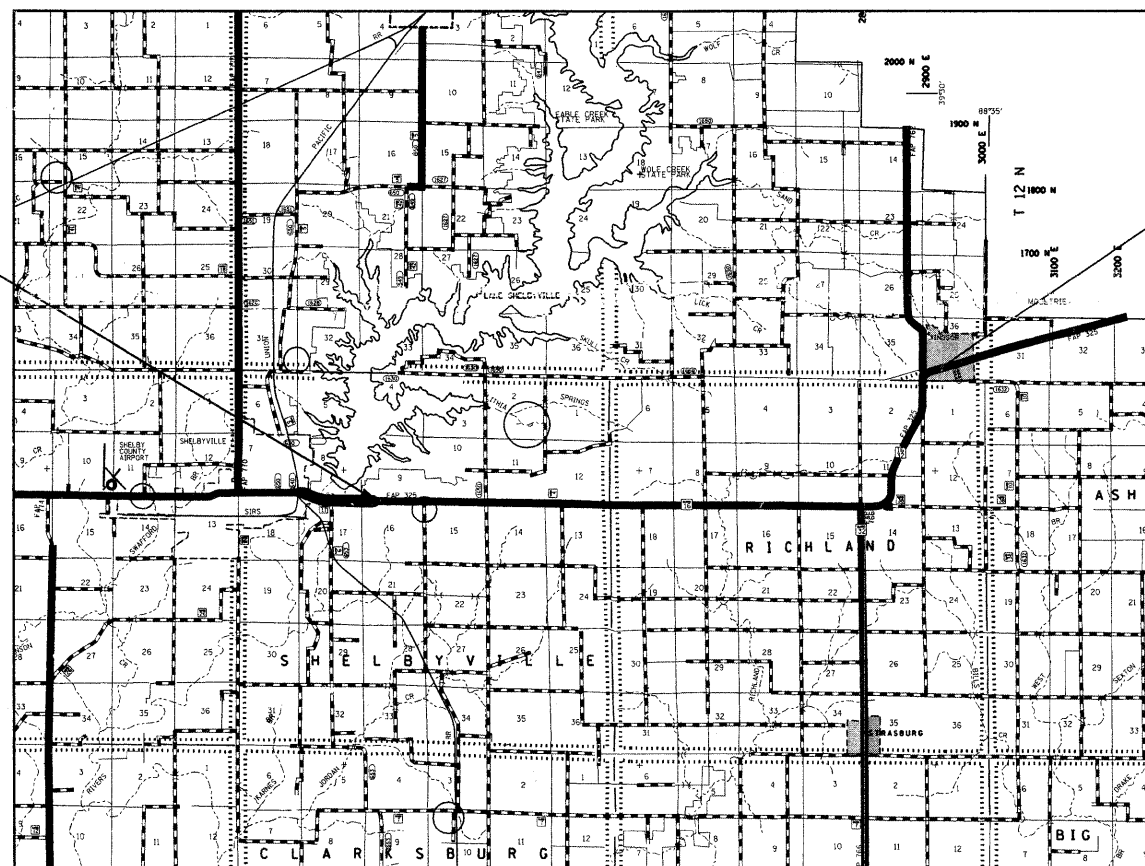
*D7 HMA SAFETY SHLD 2010-2

D-97-024-10



PROJECT
BEGINS
STA 0+00

PROJECT
ENDS
STA 551+20



FULL SIZE PLANS HAVE BEEN PREPARED USING STANDARD ENGINEERING SCALES. REDUCED SIZED PLANS WILL NOT CONFORM TO STANDARD SCALES. IN MAKING MEASUREMENTS ON REDUCED PLANS, THE ABOVE SCALES MAY BE USED.

J.U.L.I.E.
JOINT UTILITY LOCATION INFORMATION FOR EXCAVATION
1-800-892-0123
OR 811

PROJECT ENGINEER: MARK DAUGHERTY
PROJECT MANAGER: JOYCE HEMMEN

CONTRACT NO. 74444

GROSS LENGTH = 55,120 FT. = 10.44 MILE
NET LENGTH = 55,055 FT. = 10.43 MILE

STATE OF ILLINOIS
DEPARTMENT OF TRANSPORTATION
DIVISION OF HIGHWAYS

SUBMITTED April 19, 2010
Brian L. Duckert
DEPUTY DIRECTOR OF HIGHWAYS, REGION ENGINEER

May 7, 2010
Scott E. Stitt, P.E. /s/
Acting ENGINEER OF DESIGN AND ENVIRONMENT

May 7, 2010
Christine M. Road /s/
DIRECTOR OF HIGHWAYS, CHIEF ENGINEER

**PRINTED BY THE AUTHORITY
OF THE STATE OF ILLINOIS**

GENERAL NOTES

THIS SECTION SHALL BE CONSTRUCTED IN ACCORDANCE WITH THE PLANS; THE "STANDARD SPECIFICATIONS FOR ROAD AND BRIDGE CONSTRUCTION" ADOPTED JANUARY 1, 2007; THE SUPPLEMENTAL SPECIFICATIONS AND RECURRING SPECIAL PROVISIONS INDICATED ON THE CHECK SHEET, AND "THE SPECIAL PROVISIONS" INCLUDED IN THIS PROPOSAL.

THE PROPOSED PROJECT IS LOCATED ON ILL 16 IN SHELBY COUNTY. THE PROJECT BEGINS 0.2 MILES EAST OF LAKE DAM ROAD IN SHELBYVILLE AND EXTENDS TO 0.2 MI S OF ILL 32 IN WINDSOR. THE WORK INCLUDED IN SECTION D7 HMA SAFETY SHLD 2010-2 CONSIST OF HOT-MIX ASPHALT SHOULDERS WITH RUMBLE STRIPS AND A AGGREGATE SHOULDER WEDGE.

THE CONTRACTOR SHALL PROVIDE INTERNET ACCESS TO THE HOT-MIX ASPHALT PLANT QUALITY CONTROL LAB SO THAT HOT-MIX ASPHALT PLANT REPORTS CAN BE E-MAILED TO THE DISTRICT HEADQUARTERS. THIS WORK SHALL BE INCLUDED IN THE COST OF HOT-MIX ASPHALT ITEMS.

AGGREGATE SHOULDERS, TYPE B SHALL BE CRUSHED STONE, CRUSHED CONCRETE, OR RAP.

THE MATERIAL EXCAVATED FOR THE CONSTRUCTION OF THE HMA SHOULDERS SHALL BE REMOVED FROM THE PROJECT ACCORDING TO ARTICLE 202.03 OF THE STANDARD SPECIFICATIONS. THE REMOVAL OF THE EXCAVATED MATERIAL SHALL BE INCLUDED IN THE CONTRACT UNIT PRICE PER UNIT FOR EXCAVATING AND GRADING EXISTING SHOULDER.

HMA SHOULDERS SHALL BE OMITTED FROM LOCATIONS WHERE HMA SHOULDERS ALREADY EXIST. HOWEVER, RUMBLE STRIPS SHALL BE CONSTRUCTED AT THESE LOCATIONS.

THE TOTAL QUANTITY OF PAINT PAVEMENT MARKING - LINE 4" CONSISTS OF 110,541 FEET OF WHITE AND 31,393 FEET OF YELLOW.

THE TOTAL QUANTITY OF PAINT PAVEMENT MARKING - LINE 6" CONSISTS OF 575 FEET OF WHITE.

THE TOTAL QUANTITY OF PAINT PAVEMENT MARKING - LINE 12" CONSISTS OF 222 FEET OF YELLOW.

THE FOLLOWING MIXTURE REQUIREMENTS ARE APPLICABLE FOR THIS PROJECT:

HMA SHOULDER

MIXTURE USE: HMA SHOULDERS, 8"
 APPLICATION: HOT-MIX ASPHALT SHOULDERS
 PG GRADE: PG 58-22
 DESIGN AIR VOIDS: 4.0% @ NDESIGN = 30
 MIXTURE COMPOSITION: IL-19.0L
 FRICTION AGGREGATE: N/A

INDEX OF SHEETS

SHEET NO.	ITEM
1	COVER SHEET
2	INDEX OF SHEETS & GENERAL NOTES
3	SUMMARY OF QUANTITIES
4	TYPICAL CROSS-SECTIONS
5	SCHEDULES
6	RUMBLE STRIP & HMA SHOULDER DETAIL
7-8	TYPICAL APPLICATIONS OF PAVEMENT MARKING

THE FOLLOWING STANDARDS ARE A PART OF THESE PLANS AND ARE INCLUDED AFTER SHEET NO. 8:

STD. NO.	DESCRIPTION
000001-05	STANDARD SYMBOLS, ABBREVIATIONS AND PATTERNS
001006	DECIMAL OF AN INCH AND OF A FOOT
482001-02	HMA SHOULDER ADJACENT TO FLEXIBLE PAVEMENT
701011-02	OFF-RD MOVING OPERATIONS, 2L, 2W, DAY ONLY
701311-03	LANE CLOSURE, 2L, 2W, MOVING OPERATIONS - DAY ONLY
701326-03	LANE CLOSURE, 2L, 2W, PAVEMENT WIDENING, FOR SPEEDS • 45 MPH
701421-02	LANE CLOSURE, MULTILANE, DAY OPERATIONS ONLY FOR SPEEDS • MPH TO 55 MPH
701426-03	LANE CLOSURE, MULTILANE, INTERMITTENT OR MOVING OPER., FOR SPEEDS • 45 MPH
701901-01	TRAFFIC CONTROL DEVICES

SUMMARY OF QUANTITIES			TOTAL QUANTITIES	CONSTRUCTION TYPE CODE	
CODE NO	ITEM	UNIT		SFTY:2A	
				90% FED 10% STATE	
20200600	EXCAVATING AND GRADING EXISTING SHOULDER	UNIT	947	947	
48101200	AGGREGATE SHOULDERS, TYPE B	TON	2956	2956	
48203029	HOT-MIX ASPHALT SHOULDERS, 8"	SQ YD	31920	31920	
64200105	SHOULDER RUMBLE STRIP	FOOT	103821	103821	
67100100	MOBILIZATION	L SUM	1	1	
70100310	TRAFFIC CONTROL AND PROTECTION, STANDARD 701421	L SUM	1	1	
70100500	TRAFFIC CONTROL AND PROTECTION, STANDARD 701326	L SUM	1	1	
* 78001100	PAINT PAVEMENT MARKING - LETTERS AND SYMBOLS	SQ FT	250	250	
* 78001110	PAINT PAVEMENT MARKING - LINE 4"	FOOT	141934	141934	
* 78001130	PAINT PAVEMENT MARKING - LINE 6"	FOOT	575	575	
* 78001150	PAINT PAVEMENT MARKING - LINE 12"	FOOT	222	222	

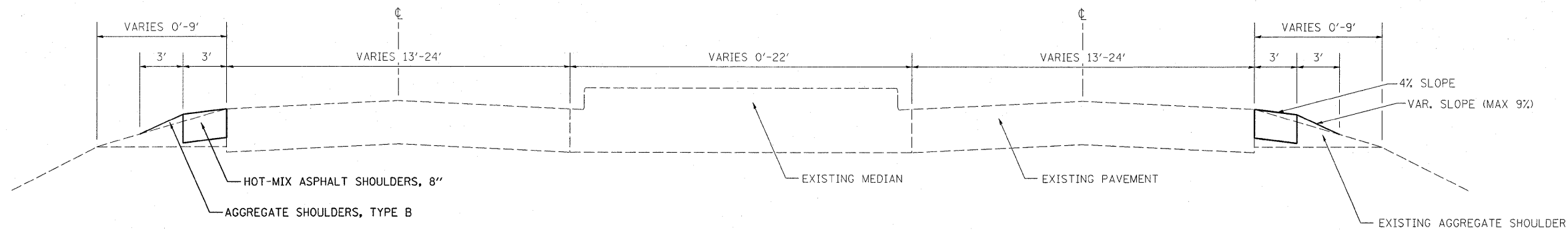
* SPECIALTY ITEM

FILE NAME =	USER NAME = teasleyck	DESIGNED -	REVISED -
c:\pwwork\PWIDDT\TEASLEYCK\0177449\01774444-sht-soq.dgn	74444-sht-soq.dgn	DRAWN -	REVISED -
PLOT SCALE = 50.0000' / IN.	CHECKED -	REVISED -	REVISED -
PLOT DATE = 3/19/2010	DATE -	REVISED -	REVISED -

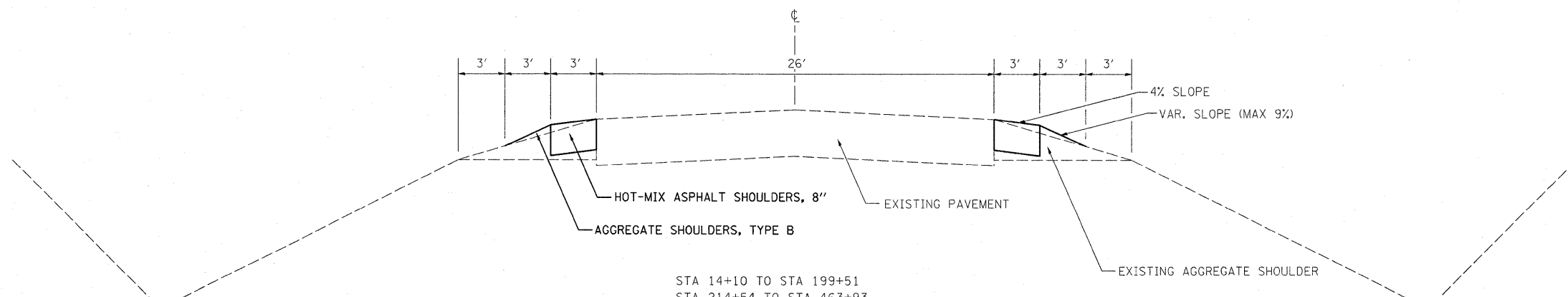
STATE OF ILLINOIS
DEPARTMENT OF TRANSPORTATION

SUMMARY OF QUANTITIES

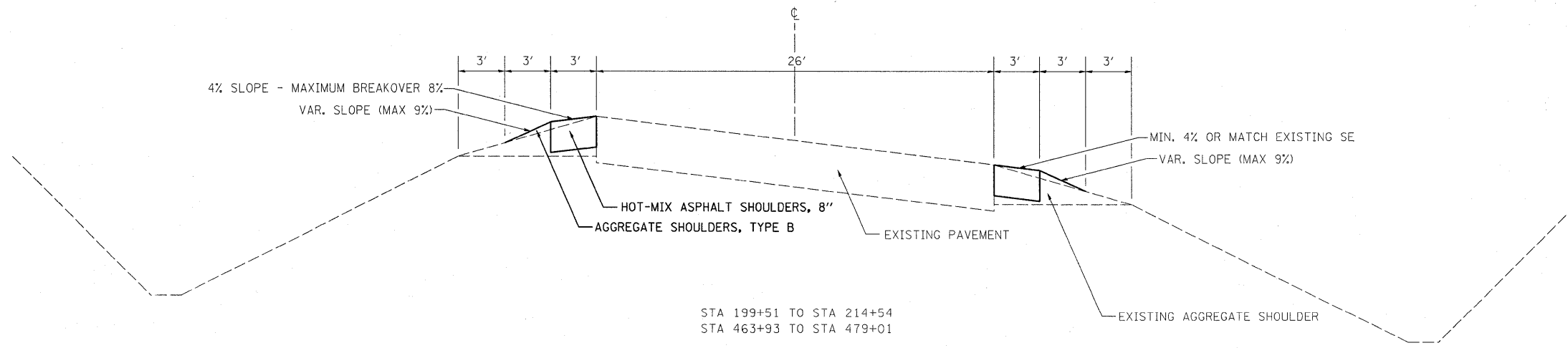
F.A.P. RTE.	SECTION	COUNTY	TOTAL SHEETS	SHEET NO.
325	*	Shelby	8	3
CONTRACT NO. 74444				



LT STA 0+00 TO LT STA 14+10
RT STA 8+65 TO RT STA 14+10



STA 14+10 TO STA 199+51
STA 214+54 TO STA 463+93
RT STA 479+01 TO RT STA 545+33
LT STA 479+01 TO LT STA 551+20



STA 199+51 TO STA 214+54
STA 463+93 TO STA 479+01

FILE NAME =
c:\pwork\PIWIDOT\TEASLEYCK\d0177449\

USER NAME = teasleyck
74444-shit-typicals.dgn
PLOT SCALE = 50,0000' / IN.
PLOT DATE = 3/19/2010

DESIGNED -
DRAWN -
CHECKED -
DATE -

REVISED -
REVISED -
REVISED -
REVISED -

**STATE OF ILLINOIS
DEPARTMENT OF TRANSPORTATION**

TYPICAL SECTIONS

SCALE: SHEET NO. OF SHEETS STA. TO STA.

F.A.P. RTE.	SECTION	COUNTY	TOTAL SHEETS	SHEET NO.
325		Shelby	8	4
CONTRACT NO. 74444				

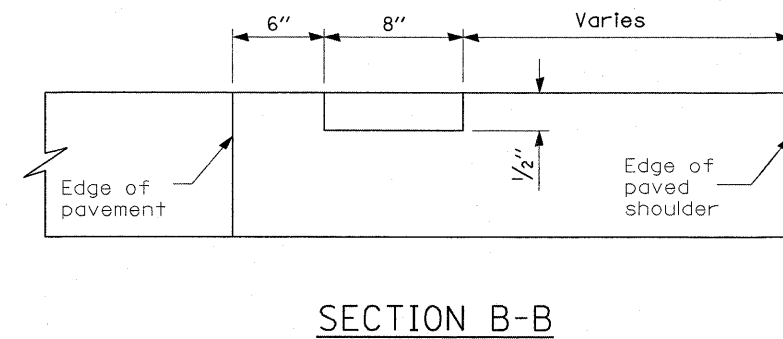
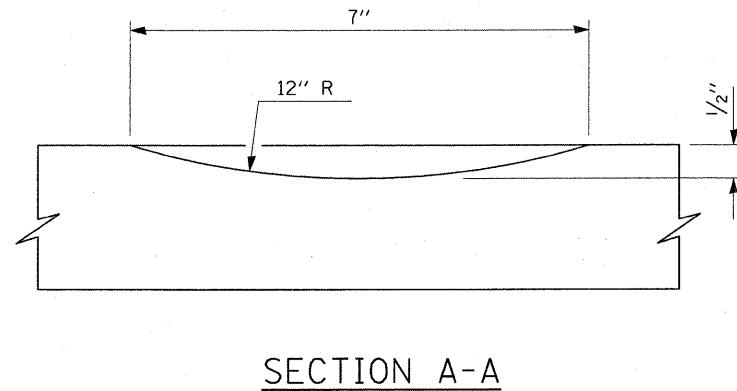
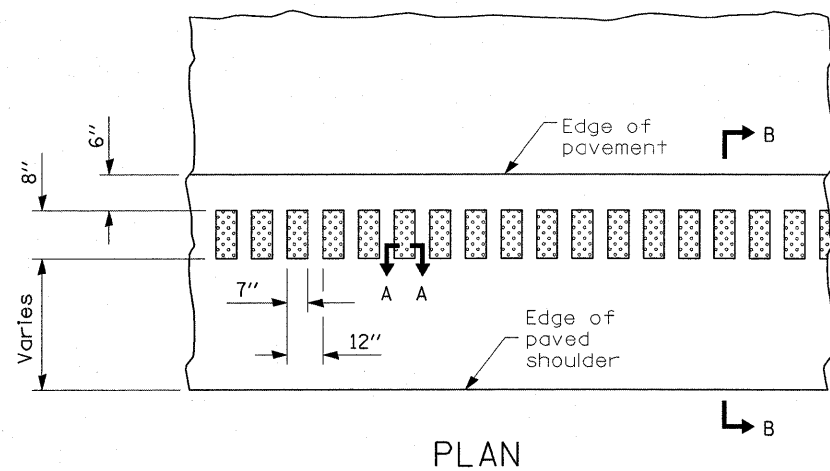
ILLINOIS FED. AID PROJECT

SHOULDER SCHEDULE

STATION TO STATION			SIDE	LENGTH	EXCAVATING AND GRADING EXISTING SHOULDER	AGGREGATE SHOULDERS, TYPE B	HOT-MIX ASPHALT SHOULDERS, 8"	SHOULDER RUMBLE STRIP	
									LT/RT
0+00	TO	301+12.50	RT	30113	273	828	9104	27779	
8+65	TO	301+12.50	LT	29248	260	761	8679	27162	
301+12.50	TO	301+77.5	LT & RT	65	-	-	-	-	
301+77.5	TO	550+90	RT	24913	218	680	7453	24189	
301+77.5	TO	551+20	LT	24943	196	687	6684	24693	
TOTALS					109280	947	2956	31920	103821

PAVEMENT MARKING SCHEDULE

STATION TO STATION			LENGTH	PAINT PAVEMENT MARKING - LINE 4"	PAINT PAVEMENT MARKING - LINE 6"	PAINT PAVEMENT MARKING - LINE 12"	PAINT PAVEMENT MARKING - LETTERS AND SYMBOLS
0+00	TO	14+10	1410	9972	300	0	93.6
14+10	TO	301+12.50	28703	69787	100	132	46.8
301+12.50	TO	301+77.50	65	146	0	0	0.0
301+77.50	TO	551+20	24943	62029	175	90	109.2
TOTALS			55120	141934	575	222	250



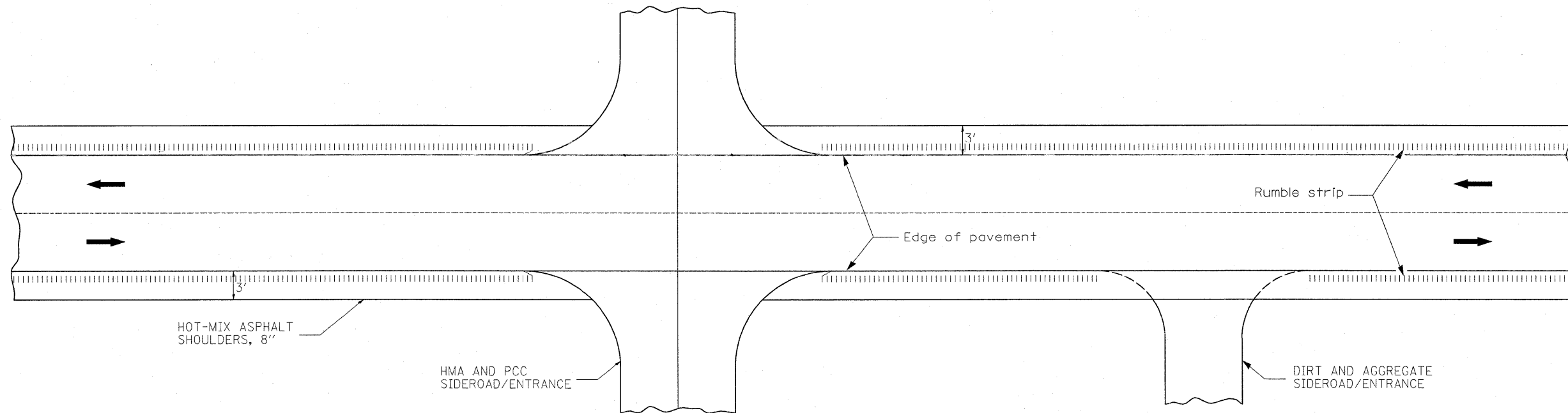
PLAN

SECTION A-A

SECTION B-B

NOTE: OMIT RUMBLE STRIPS ON ALL SIDEROADS, PRIVATE AND COMMERCIAL ENTRANCES AT RADIUS RETURNS, OMIT RUMBLE STRIPS AT MAILBOX TURNOUTS 60' BOTH SIDES OF THE MAILBOX OR AS DETERMINED BY THE ENGINEER. RUMBLE STRIPS SHALL NOT BE OMITTED ON FIELD ENTRANCES.

OMIT HOT-MIX ASPHALT SHOULDERS, 8" ON ALL HMA AND PCC SIDEROADS, ENTRANCES, AND CONCRETE GUTTER LOCATIONS.



TYPICAL APPLICATION AT SIDEROADS AND ENTRANCES

FILE NAME =
c:\pw\work\VPW\DOT\TEASLEYCK\d0177449\07

USER NAME = teasleyck
74444-shr-details.dgn

DESIGNED -
DRAWN -

REVISED -
REVISED -

PLOT SCALE = 50.0000 / IN.

CHECKED -

REVISED -

PLOT DATE = 3/19/2010

DATE -

REVISED -

STATE OF ILLINOIS
DEPARTMENT OF TRANSPORTATION

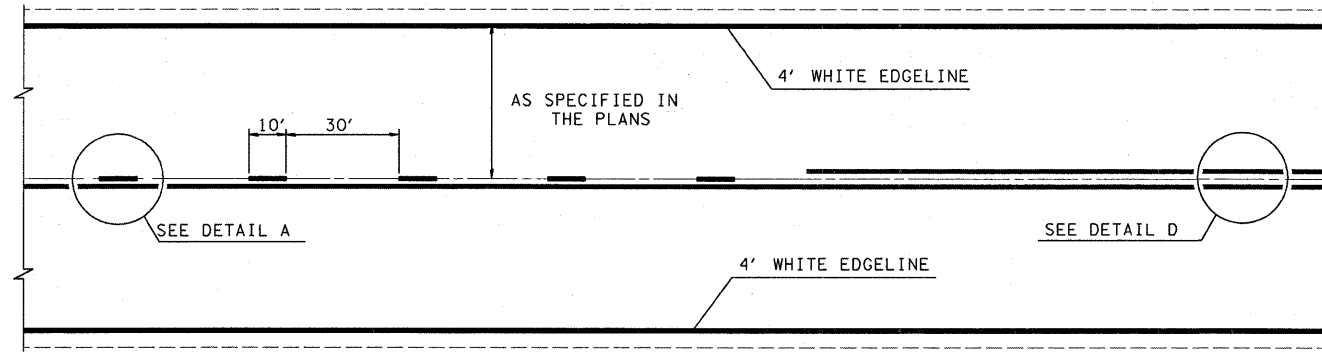
HMA SHOULDER AND RUMBLE STRIP DETAIL

SCALE: SHEET NO. OF SHEETS STA. TO STA.

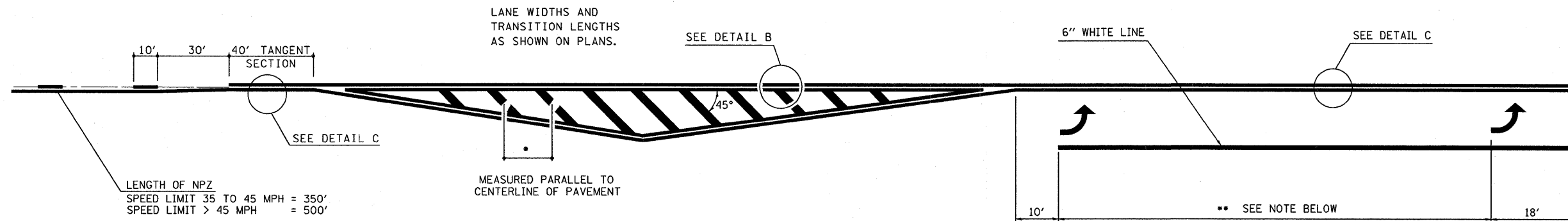
F.A.P. RTE.	SECTION	COUNTY	TOTAL SHEETS	SHEET NO.
325		Shelby	8	6

CONTRACT NO. 74444

ILLINOIS FED. AID PROJECT



TYPICAL CENTERLINE, NO PASSING ZONE LINE (NPZ) & EDGELINE MARKINGS
2-LANE PAVEMENT



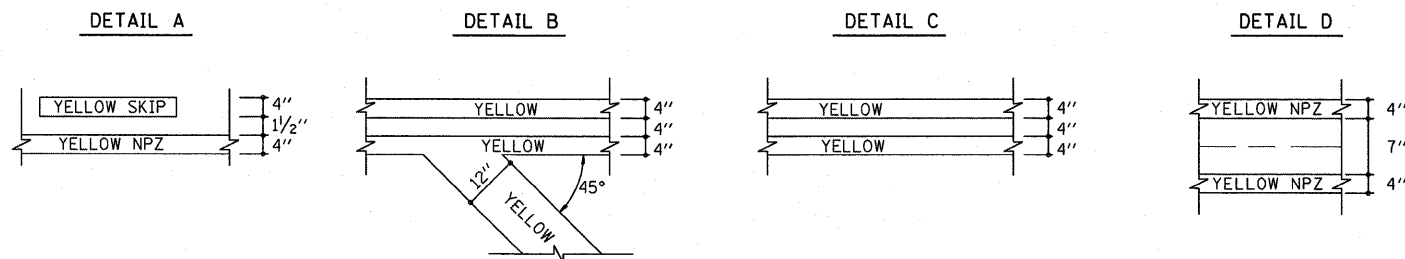
•DIAGONAL SPACING

SPEED LIMIT	< 30 MPH	= 15'
SPEED LIMIT	30 TO 45 MPH	= 20'
SPEED LIMIT	> 45 MPH	= 30'

** PLACE THE FIRST ARROW EVEN WITH THE BEGINNING OF THE TURN BAY. PLACE ANOTHER ARROW 18' BACK FROM THE STOP BAR. IF REQUIRED, ADD ADDITIONAL ARROWS TO MAINTAIN A MAXIMUM OF 80' SPACING.

NOTES:

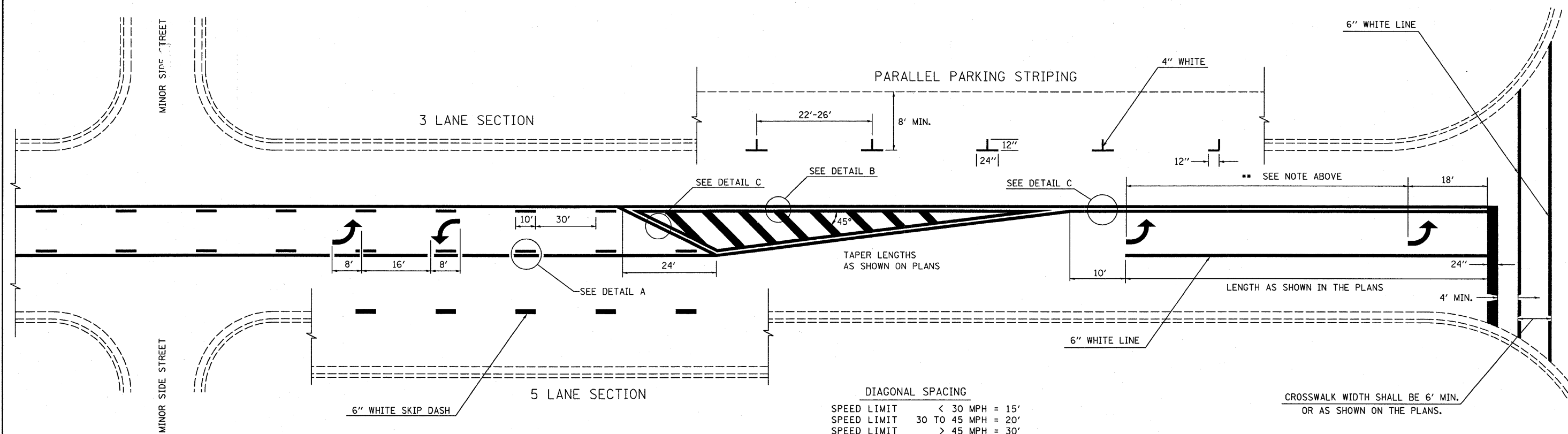
1. OMIT EDGELINE THRU SIDE ROADS.
2. TAPER RATES, LANE WIDTHS, AND STORAGE LENGTHS AS SHOWN ON THE PLANS.
3. WHEN MEDIANS ARE PRESENT, PLACE A SINGLE YELLOW STRIPE AROUND ITS PERIMETER.



NOT TO SCALE

FILE NAME =	USER NAME = teasleyck	DESIGNED -	REVISED - MMO 12-99	STATE OF ILLINOIS DEPARTMENT OF TRANSPORTATION	TYPICAL APPLICATIONS OF PAVEMENT MARKING SHEET 1 OF 2				F.A.P. RTE. 325	SECTION *	COUNTY Shelby	TOTAL SHEETS 8	SHEET NO. 7
es:\pw_work\VP\DOT\TEASLEYCK\d0177449\074444-sh-t-details.dgn	74444-sh-t-details.dgn	DRAWN -	REVISED -		SCALE:	SHEET NO.	OF SHEETS	STA.	TO STA.	ILLINOIS FED. AID PROJECT			
PLOT SCALE = 50.0000' / IN.	CHECKED -	REVISIED -	REVISIED -		CONTRACT NO. 74444								
PLOT DATE = 3/19/2010	DATE -	REVISIED -	REVISIED -										

•• PLACE THE FIRST ARROW EVEN WITH THE BEGINNING OF THE TURN BAY.
 PLACE ANOTHER ARROW 18' BACK FROM THE STOP BAR, IF REQUIRED,
 ADD ADDITIONAL ARROWS TO MAINTAIN A MAXIMUM OF 80' SPACING.



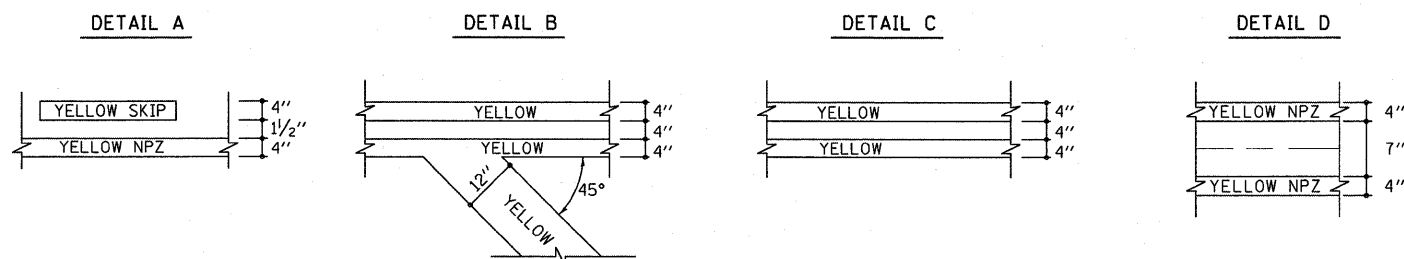
DIAGONAL SPACING

SPEED LIMIT	< 30 MPH	= 15'
SPEED LIMIT	30 TO 45 MPH	= 20'
SPEED LIMIT	> 45 MPH	= 30'

CROSSWALK WIDTH SHALL BE 6' MIN.
 OR AS SHOWN ON THE PLANS.

TYPICAL BI-DIRECTIONAL TURN LANE MARKINGS
 (SHOWING TRANSITION TO EXCLUSIVE LEFT TURN LANE)

- NOTE:
1. NO LESS THAN 2 ARROWS SHALL BE USED.
 2. TAPER RATES, LANE WIDTHS, AND STORAGE LENGTHS AS SHOWN ON THE PLANS.
 3. AVOID PLACING BI-DIRECTIONAL ARROWS IN INTERSECTIONS.
 4. BI-DIRECTIONAL ARROWS SHALL BE SPACED A MAXIMUM OF 250'.



NOT TO SCALE

FILE NAME =
 c:\pw\work\NPWIDOT\TEASLEYCK\d8177449\

USER NAME = teasleyck
 74444-sht-details.dgn

DESIGNED -
 DRAWN -

REVISED - MMO 12-99
 REVISED -

PLOT SCALE = 50,0000' / IN.
 PLOT DATE = 3/19/2010

CHECKED -
 DATE -

REVISED -
 REVISED -

STATE OF ILLINOIS
 DEPARTMENT OF TRANSPORTATION

TYPICAL APPLICATIONS OF PAVEMENT MARKING
 SHEET 2 OF 2

SCALE: SHEET NO. OF SHEETS STA. TO STA.

F.A.P. RTE. 325	SECTION	COUNTY Shelby	TOTAL SHEETS 8	SHEET NO. 8
CONTRACT NO. 74444			ILLINOIS FED. AID PROJECT	