

STATE OF ILLINOIS
 DEPARTMENT OF TRANSPORTATION
 DIVISION OF HIGHWAYS

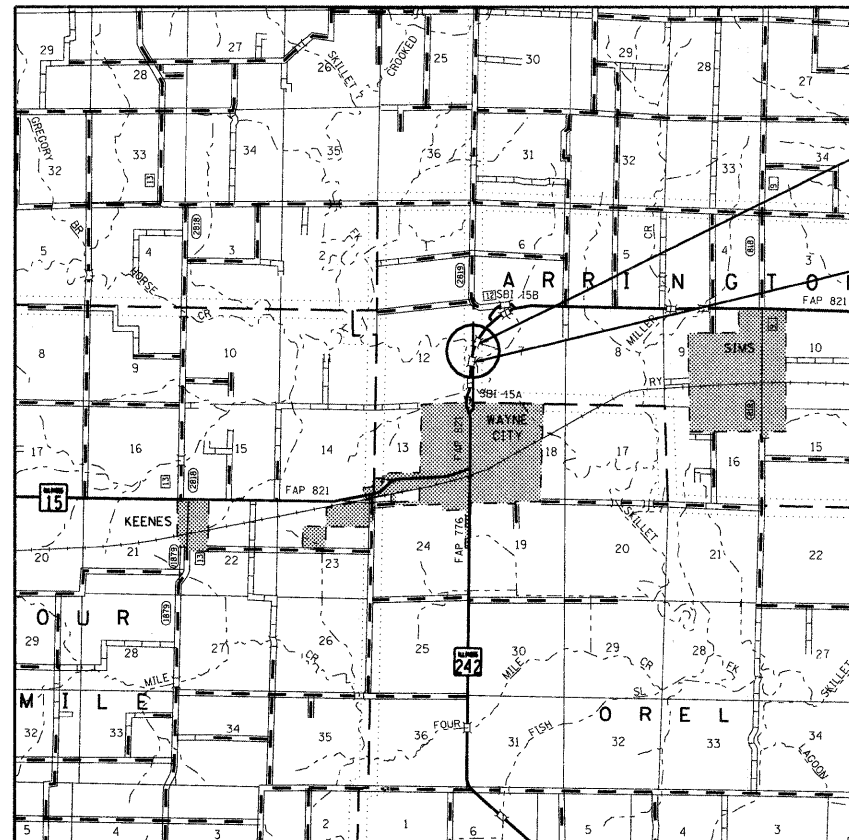
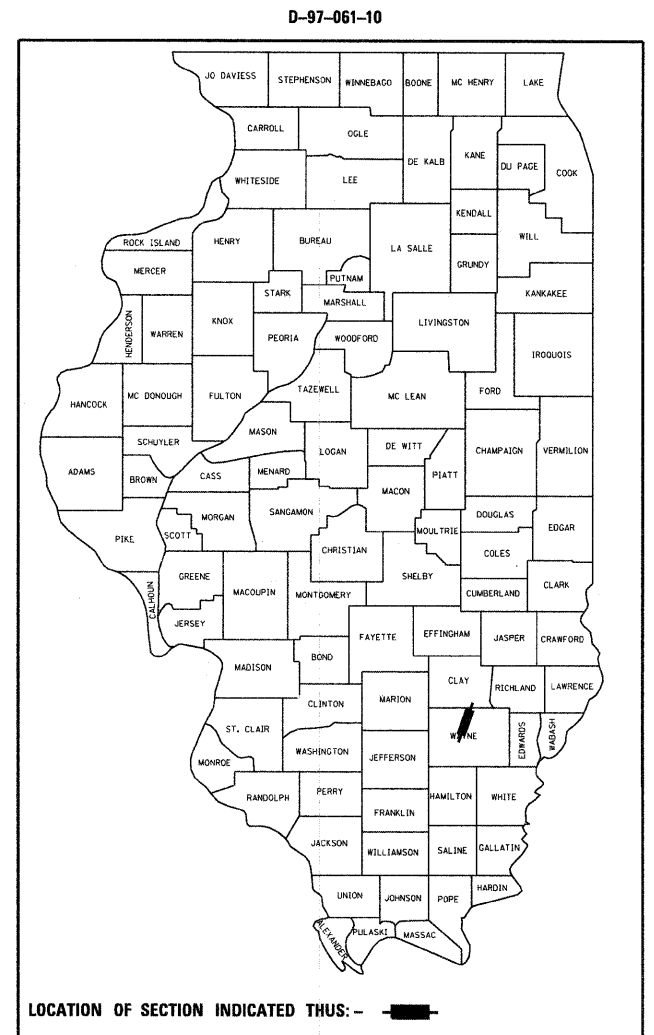
**PROPOSED
 HIGHWAY PLANS**

FAP ROUTE 821 (IL 15)
 SECTION D7 SCOUR REPAIR 2011-1
 PROJECT --
 SCOUR MITIGATION
 WAYNE COUNTY

C-97-124-10

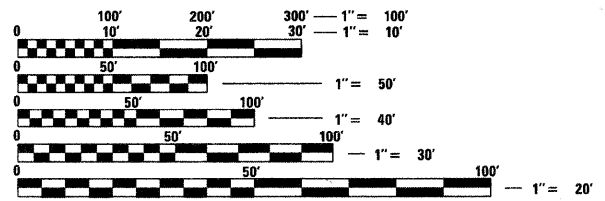
F.A.P. RTE.	SECTION	COUNTY	TOTAL SHEETS	SHEET NO.
821	D7 Scour Repair 2011-1	Wayne	5	1
ILLINOIS CONTRACT NO. 74478				

FOR INDEX OF SHEETS, SEE SHEET NO. 2



STR #096-0004
 SKILLET FORK
 OVERFLOW

STR #096-0003
 SKILLET FORK



FULL SIZE PLANS HAVE BEEN PREPARED USING STANDARD ENGINEERING SCALES. REDUCED SIZED PLANS WILL NOT CONFORM TO STANDARD SCALES. IN MAKING MEASUREMENTS ON REDUCED PLANS, THE ABOVE SCALES MAY BE USED.

J.U.L.I.E.
 JOINT UTILITY LOCATION INFORMATION FOR EXCAVATION
 1-800-892-0123
 OR 811

PROJECT ENGINEER: ALEC RING
 PROJECT MANAGER

CONTRACT NO. 74478

STATE OF ILLINOIS
 DEPARTMENT OF TRANSPORTATION
 DIVISION OF HIGHWAYS

SUBMITTED March 25 2010
Roger S. Onshell
 DEPUTY DIRECTOR OF HIGHWAYS, REGION ENGINEER

May 7 2010
Scott E. Stitt
 Acting ENGINEER OF DESIGN AND ENVIRONMENT

May 7 2010
Christine M. Reed
 DIRECTOR OF HIGHWAYS, CHIEF ENGINEER

PRINTED BY THE AUTHORITY
 OF THE STATE OF ILLINOIS