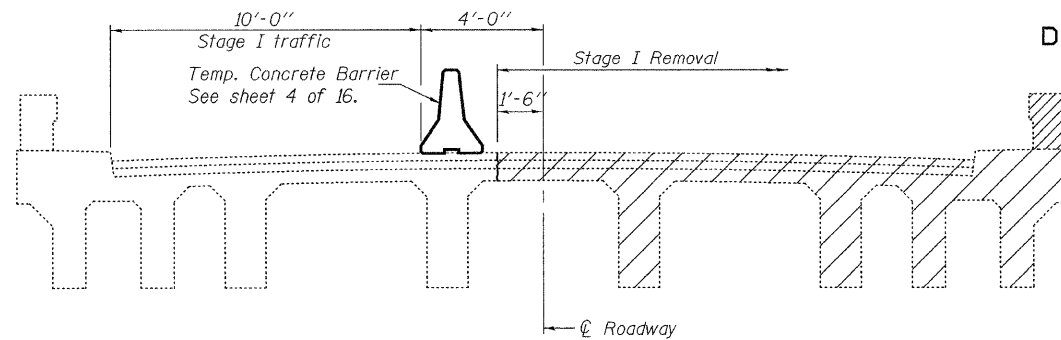
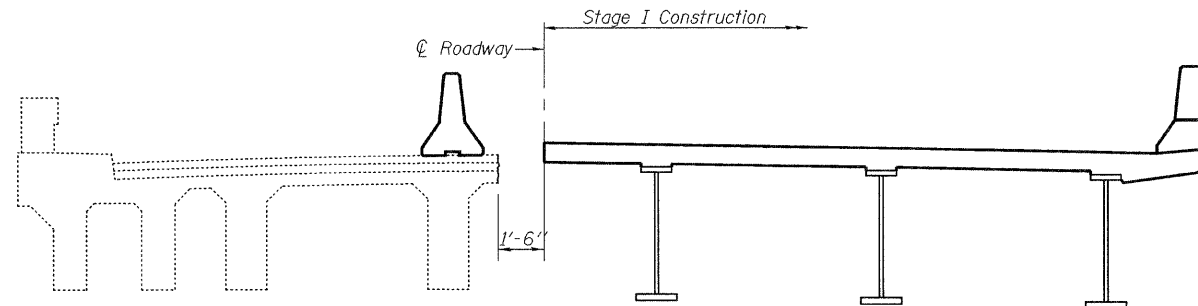


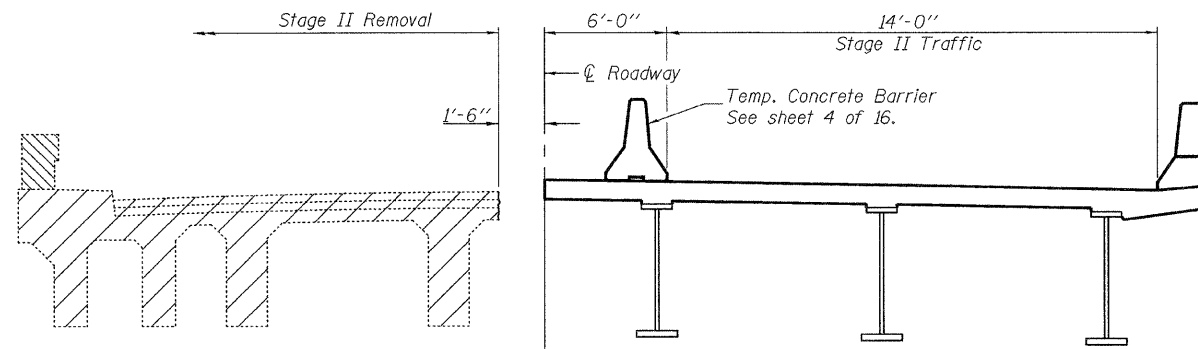
STATE OF ILLINOIS
DEPARTMENT OF TRANSPORTATION



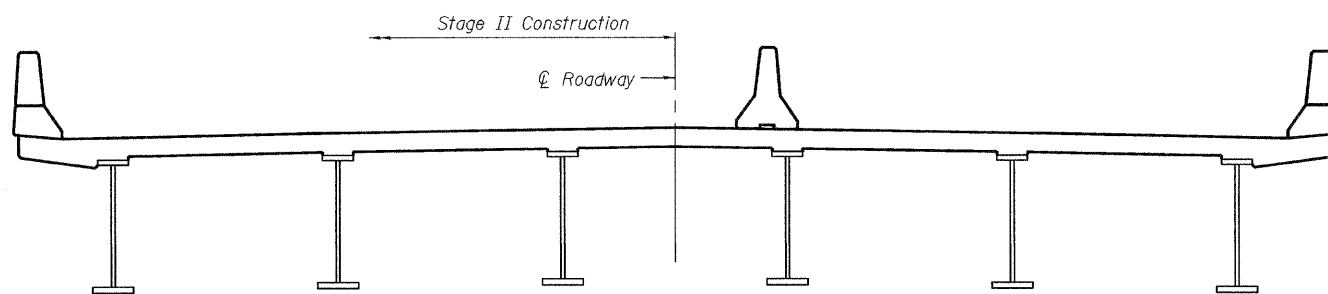
STAGE I REMOVAL



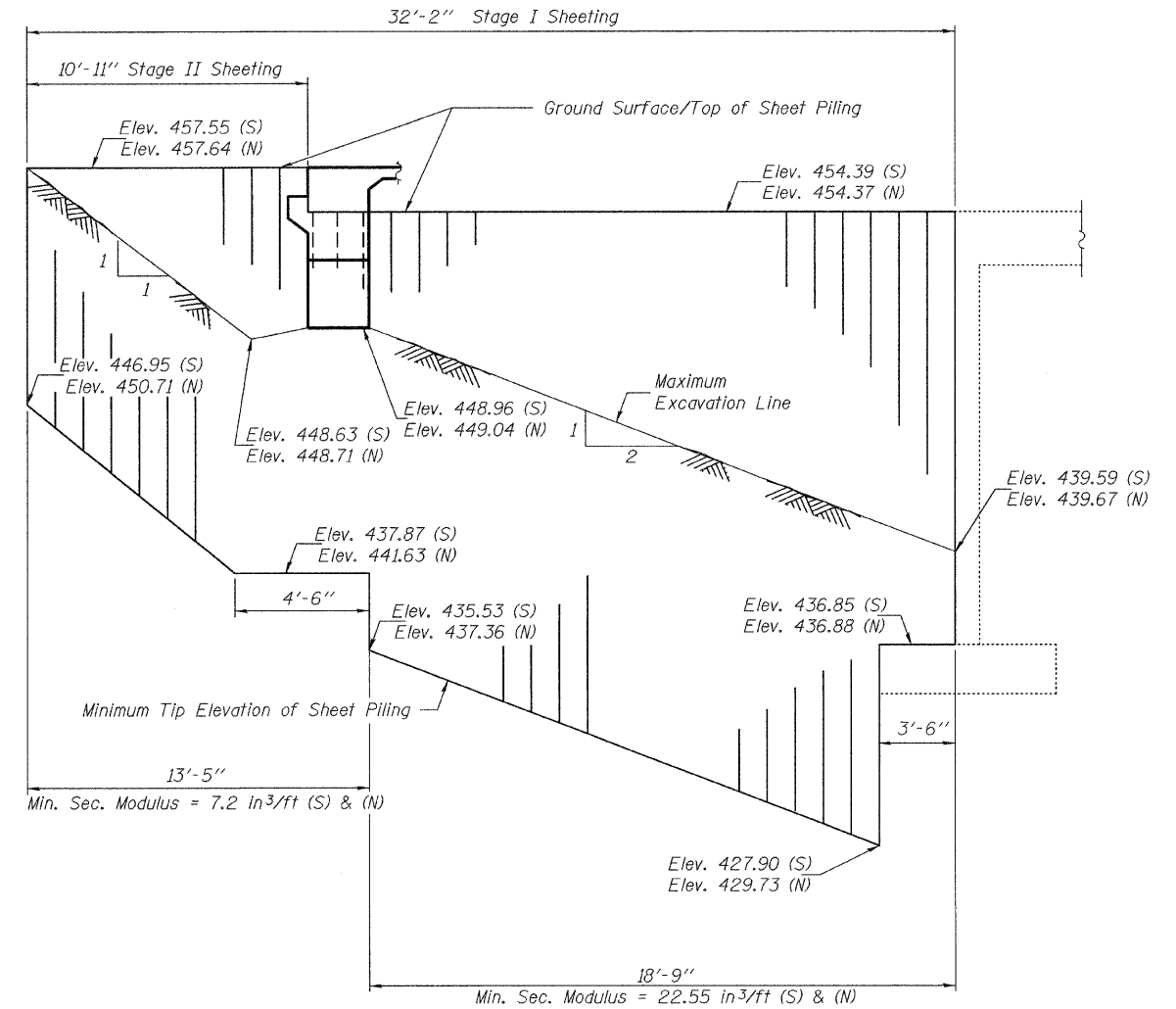
STAGE I CONSTRUCTION



STAGE II REMOVAL



STAGE II CONSTRUCTION



TEMPORARY SHEET PILING AT ABUTMENTS

If the Contractor chooses to alter the temporary cantilevered sheet piling design requirements shown on the plans, a design submittal including plan details and calculations will be required for review and acceptance by the Engineer.

The Contractor shall connect the first sheet to the existing abutment wall to ensure stability of sheets driven to the top of the existing footing. This connection shall be reviewed and accepted by the Engineer and the cost included with Temporary Sheet Piling.

**STAGE CONSTRUCTION DETAILS
STRUCTURE NO. 079-0050**

DESIGNED	J.E. KRAMER
CHECKED	P.E. COPPERNOLL
DRAWN	AMBER SEIBER <i>htd</i>
CHECKED	GRA

EXAMINED	March 2, 2010 <i>Thomas J. Domagalaki</i> ENGINEER OF BRIDGE DESIGN
PASSED	<i>Ralph E. Anderson</i> ENGINEER OF BRIDGES AND STRUCTURES

Notes:
All sections are looking North.
Hatched area indicates Removal of Existing Structure.
For quantity of Temporary Concrete Barrier, see Roadway Plans.

SHEET NO. 3 21 SHEETS	F.A.P. RTE.	SECTION	COUNTY	TOTAL SHEETS	SHEET NO.
	682	21BR, 21-I-1	RANDOLPH	77	42
CONTRACT NO. 76126					
FED. ROAD DIST. NO. _ ILLINOIS FED. AID PROJECT					