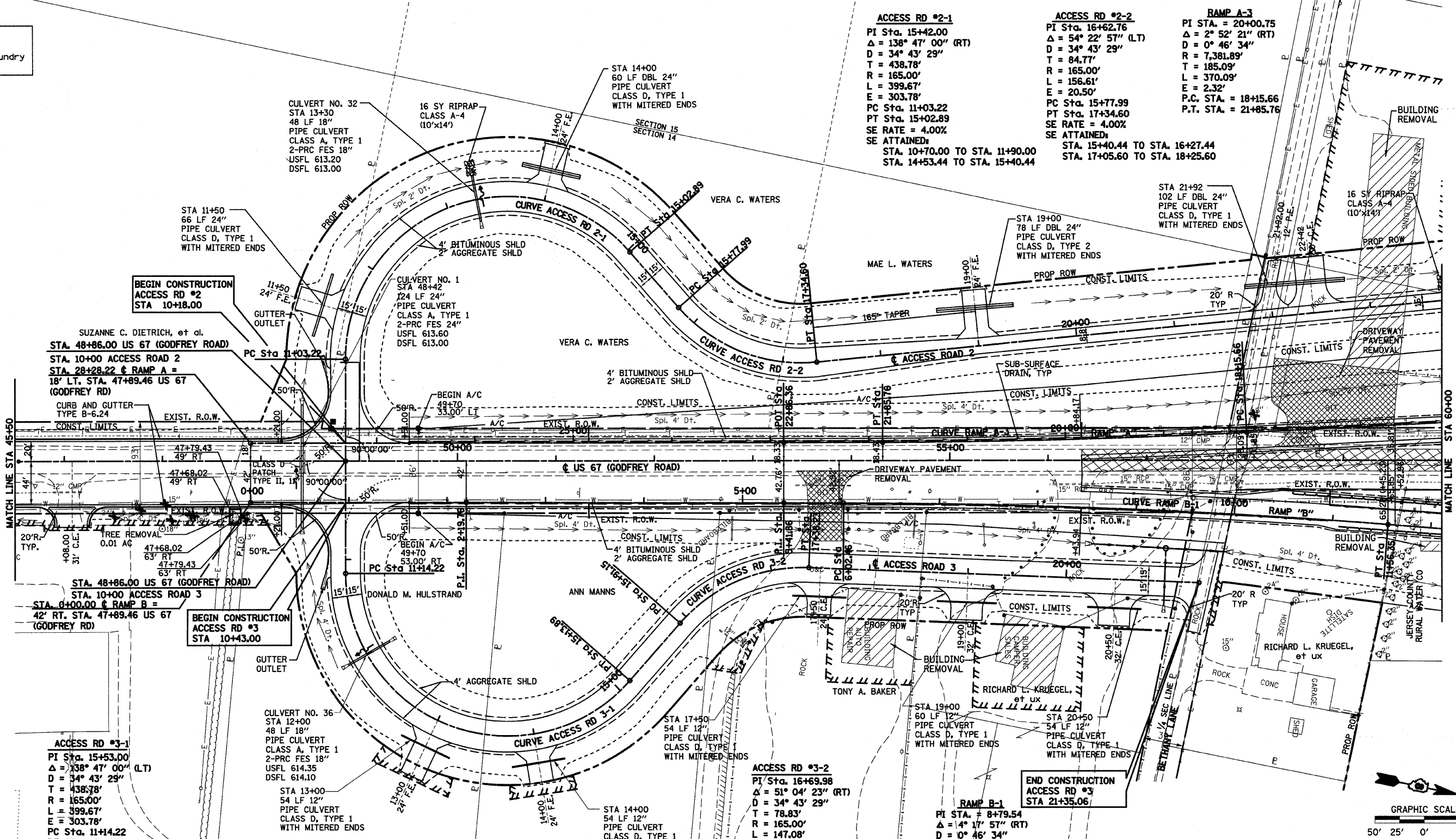


**LEGEND**

Tree Removal Boundary



**ACCESS RD #2-1**  
 PI Sta. 15+42.00  
 $\Delta = 138^\circ 47' 00''$  (RT)  
 D = 34' 43' 29"  
 T = 438.78'  
 R = 165.00'  
 L = 399.67'  
 E = 303.78'  
 PC Sta. 11+03.22  
 PT Sta. 15+02.89  
 SE RATE = 4.00%  
 SE ATTAINED:  
 STA. 10+70.00 TO STA. 11+90.00  
 STA. 14+53.44 TO STA. 15+40.44

**ACCESS RD #2-2**  
 PI Sta. 16+62.76  
 $\Delta = 54^\circ 22' 57''$  (LT)  
 D = 34' 43' 29"  
 T = 84.77'  
 R = 165.00'  
 L = 156.61'  
 E = 20.50'  
 PC Sta. 15+77.99  
 PT Sta. 17+34.60  
 SE RATE = 4.00%  
 SE ATTAINED:  
 STA. 15+40.44 TO STA. 16+27.44  
 STA. 17+05.60 TO STA. 18+25.60

**RAMP A-3**  
 PI STA. = 20+00.75  
 $\Delta = 2^\circ 52' 21''$  (RT)  
 D = 0' 46' 34"  
 R = 7,381.89'  
 T = 185.09'  
 L = 370.09'  
 E = 2.32'  
 P.C. STA. = 18+15.66  
 P.T. STA. = 21+85.76

**BEGIN CONSTRUCTION ACCESS RD #2**  
 STA 10+18.00

SUZANNE C. DIETRICH, et al.  
 STA. 48+86.00 US 67 (GODFREY ROAD)  
 STA. 10+00 ACCESS ROAD 2  
 STA. 28+28.22 RAMP A = 18' LT. STA. 47+89.46 US 67 (GODFREY RD)

PC Sta 11+03.22

**BEGIN CONSTRUCTION ACCESS RD #3**  
 STA 10+43.00

STA. 48+86.00 US 67 (GODFREY ROAD)  
 STA. 10+00 ACCESS ROAD 3  
 STA. 0+00.00 RAMP B = 42' RT. STA. 47+89.46 US 67 (GODFREY RD)

PC Sta 11+14.22

**ACCESS RD #3-1**  
 PI Sta. 15+53.00  
 $\Delta = 138^\circ 47' 00''$  (LT)  
 D = 34' 43' 29"  
 T = 438.78'  
 R = 165.00'  
 L = 399.67'  
 E = 303.78'  
 PC Sta. 11+14.22  
 PT Sta. 15+13.89  
 SE RATE = 4.00%  
 SE ATTAINED:  
 STA. 10+94.00 TO STA. 12+14.00  
 STA. 14+65.52 TO STA. 15+52.52

STA 13+00  
 54 LF 12"  
 PIPE CULVERT  
 CLASS D, TYPE 1  
 WITH MITERED ENDS

STA 14+00  
 54 LF 12"  
 PIPE CULVERT  
 CLASS D, TYPE 1  
 WITH MITERED ENDS

**ACCESS RD #3-2**  
 PI Sta. 16+69.98  
 $\Delta = 51^\circ 04' 23''$  (RT)  
 D = 34' 43' 29"  
 T = 78.83'  
 R = 165.00'  
 L = 147.08'  
 E = 17.86'  
 PC Sta. 15+91.15  
 PT Sta. 17+38.23  
 SE RATE = 4.00%  
 SE ATTAINED:  
 STA. 15+52.52 TO STA. 16+39.52  
 STA. 17+09.23 TO STA. 18+29.23

**RAMP B-1**  
 PI STA. = 8+79.54  
 $\Delta = 14^\circ 17' 57''$  (RT)  
 D = 0' 46' 34"  
 R = 7,381.89'  
 T = 277.08'  
 L = 553.89'  
 E = 5.20'  
 S.E. = N.C.  
 P.C. STA. = 6+02.46  
 P.T. STA. = 11+56.35

**END CONSTRUCTION ACCESS RD #3**  
 STA 21+35.06

REVISIONS	
NAME	DATE

ILLINOIS DEPARTMENT OF TRANSPORTATION

**US 67 (GODFREY ROAD),  
 ACCESS RD 2  
 AND ACCESS RD 3**

SCALE: VERT. : 1"=50'  
 HORIZ. : 1"=50'  
 DATE : 09-04-09

DRAWN BY : TWC  
 CHECKED BY : MAR