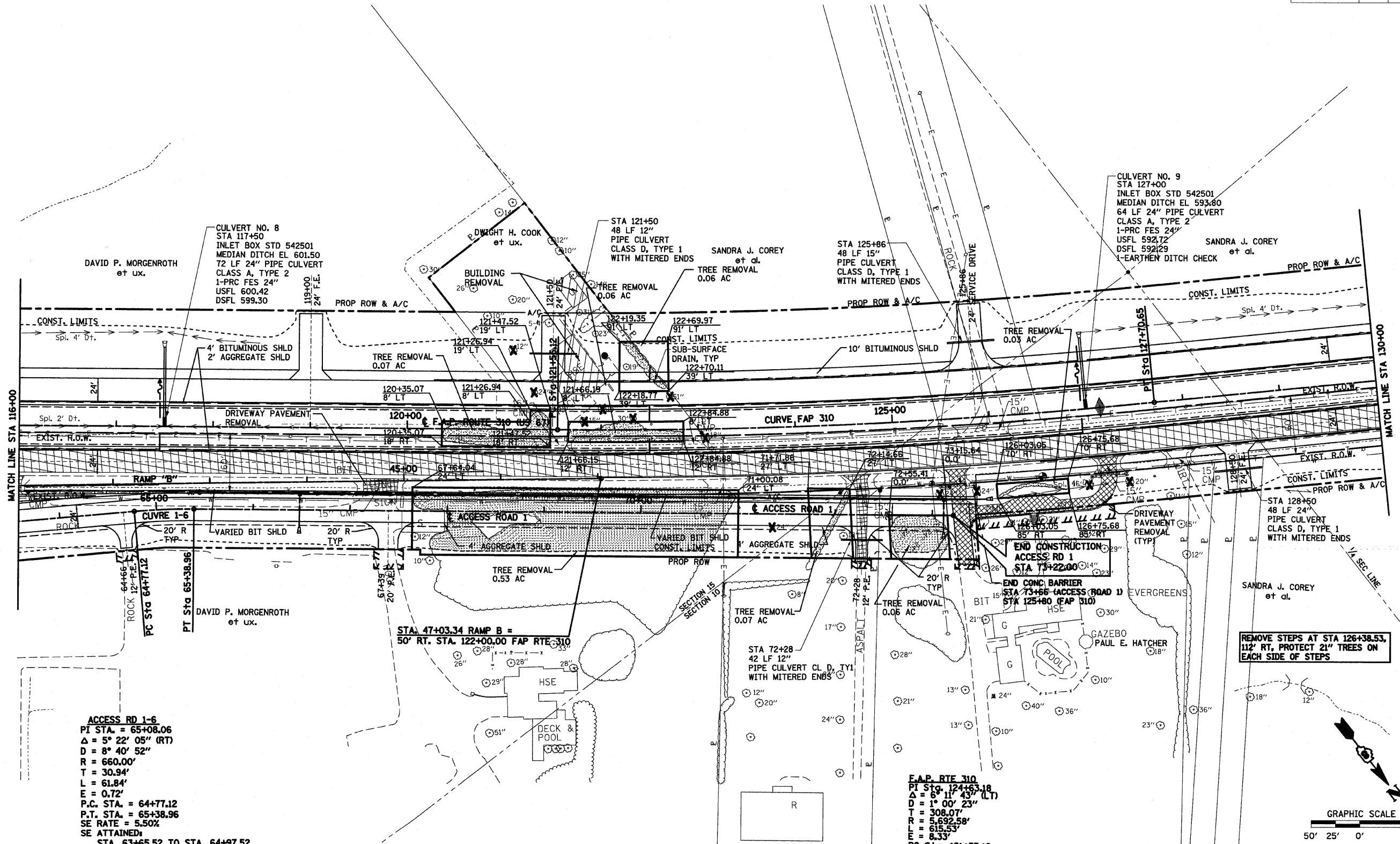


F.A.P. RTE.	SECTION	COUNTY	TOTAL SHEETS	SHEET NO.
310	60-16	MADISON	662	51
STA. 116+00		TO STA. 130+00		
FED. ROAD DIST. NO. 8		ILLINOIS FED. AID PROJECT		
CONTRACT NO. 76311				

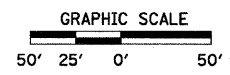


ACCESS RD 1-6
 PI STA. = 65+08.06
 $\Delta = 5^{\circ} 22' 05''$ (RT)
 $D = 8^{\circ} 40' 52''$
 $R = 660.00'$
 $T = 30.94'$
 $L = 61.84'$
 $E = 0.72'$
 P.C. STA. = 64+77.12
 P.T. STA. = 65+38.96
 SE RATE = 5.50%
 SE ATTAINED:
 STA. 63+65.52 TO STA. 64+97.52
 STA. 65+18.56 TO STA. 66+50.56

F.A.P. RTE 310
 PI Sta. 124+63.18
 $\Delta = 6^{\circ} 11' 43''$ (LT)
 $D = 1^{\circ} 00' 23''$
 $T = 308.07'$
 $R = 5,692.58'$
 $E = 615.53'$
 $L = 8.33'$
 PC Sta. 121+55.12
 PT Sta. 127+70.65
 SE RATE = 3.2%
 SE ATTAINED:
 Sta. 120+14.12 TO Sta. 122+03.12
 Sta. 127+22.65 TO Sta. 129+11.65

BM #28 STA. 125+37.23, 64.93' RT.
 RR SPIKE IN POWER POLE, IN FRONT OF HOUSE #7609 EL. 599.90

REMOVE STEPS AT STA 126+38.53, 112' RT, PROTECT 21" TREES ON EACH SIDE OF STEPS



REVISIONS	
NAME	DATE

ILLINOIS DEPARTMENT OF TRANSPORTATION
FAP RTE 310 (US 67) AND ACCESS RD 1
 SCALE: VERT. : 1"=50'
 HORIZ. : 1"=50'
 DATE : 09-04-09
 DRAWN BY : TWC
 CHECKED BY : MAR