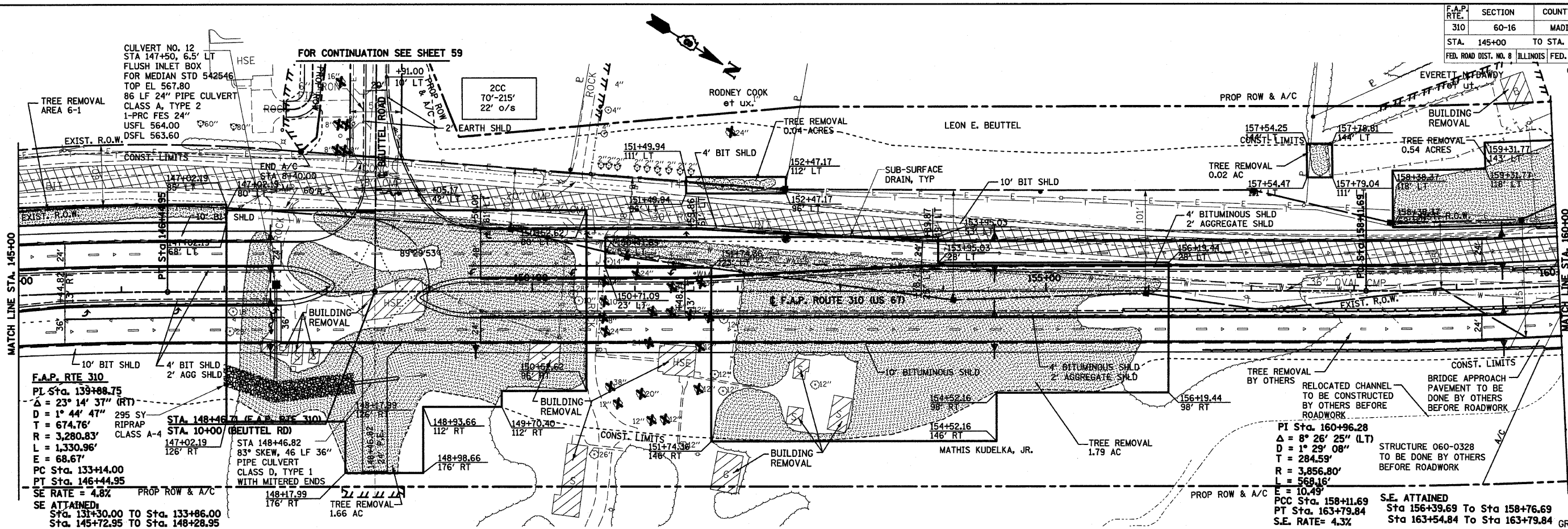


F.A.P. RTE.	SECTION	COUNTY	TOTAL SHEETS	SHEET NO.
310	60-16	MADISON	662	53
STA. 145+00		TO STA. 160+00		
FED. ROAD DIST. NO. 8 ILLINOIS FED. AID PROJECT				
CONTRACT NO. 76311				

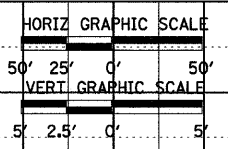
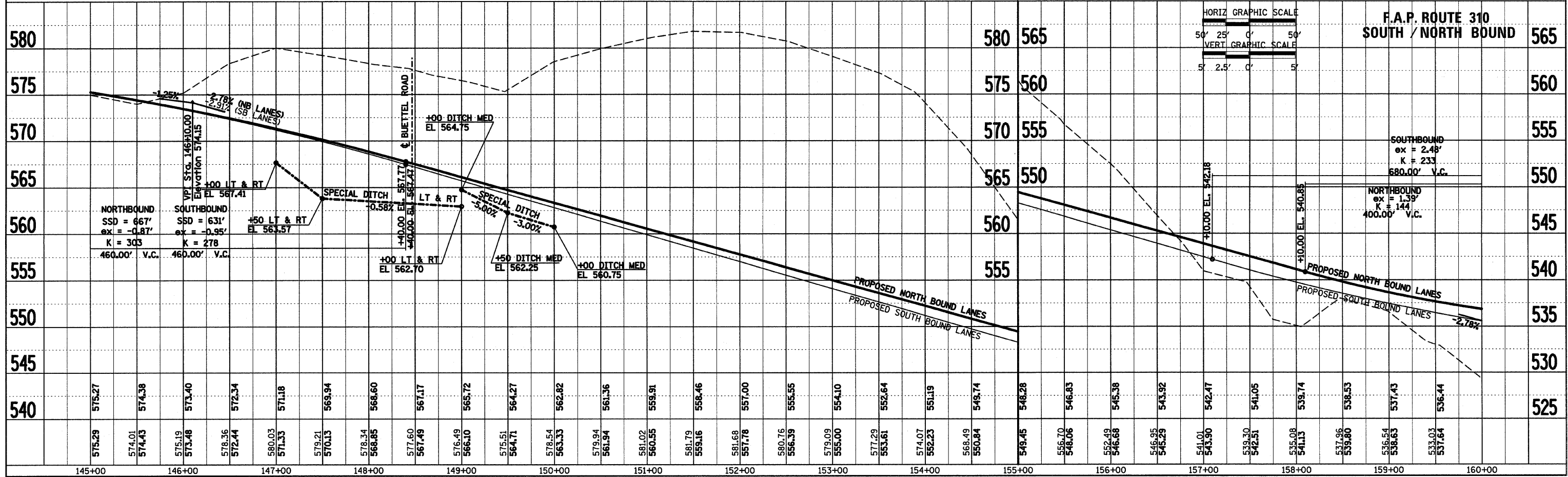
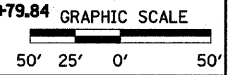
DATE	5/28/09
BY	WJW
CHECKED	WJW
DATE	7/25/09
BY	WJW
CHECKED	WJW
DATE	
BY	
CHECKED	

DATE	
BY	
CHECKED	
DATE	
BY	
CHECKED	



**F.A.P. RTE 310**  
 PL Sta. 139+88.75  
 $\Delta = 23^\circ 14' 37''$  (RT)  
 $D = 1^\circ 44' 47''$  295 SY  
 $T = 674.76'$  RIPRAP CLASS A-4  
 $R = 3,280.83'$   
 $L = 1,330.96'$   
 $E = 68.67'$   
 PC Sta. 133+44.00  
 PT Sta. 146+44.95  
 SE RATE = 4.8%  
 SE ATTAINED  
 Sta. 131+30.00 To Sta. 133+86.00  
 Sta. 145+72.95 To Sta. 148+28.95

PI Sta. 160+96.28  
 $\Delta = 8^\circ 26' 25''$  (LT)  
 $D = 1^\circ 29' 08''$   
 $T = 284.59'$   
 $R = 3,856.80'$   
 $L = 568.16'$   
 $E = 10.49'$   
 PCC Sta. 158+11.69  
 PT Sta. 163+79.84  
 S.E. RATE = 4.3%  
 S.E. ATTAINED  
 Sta 156+39.69 To Sta 158+76.69  
 Sta 163+54.84 To Sta 163+79.84



**F.A.P. ROUTE 310**  
**SOUTH / NORTH BOUND**

**SOUTHBOUND**  
 $ex = 2.48'$   
 $K = 233$   
 400.00' V.C.

**NORTHBOUND**  
 $ex = 1.39'$   
 $K = 144$   
 400.00' V.C.