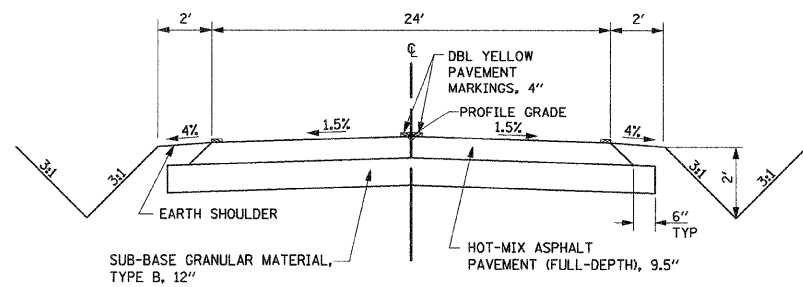
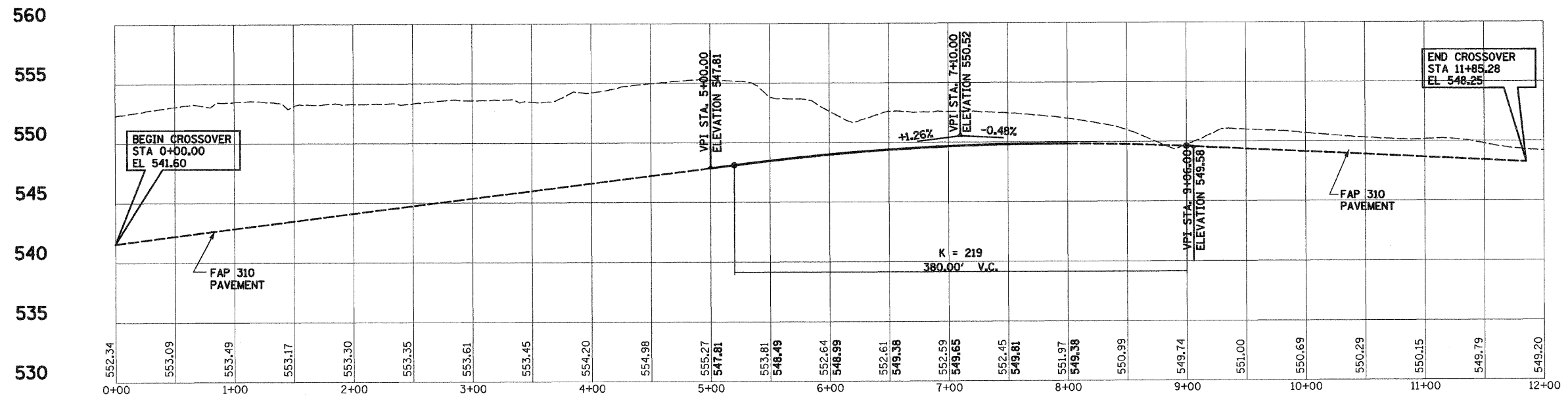
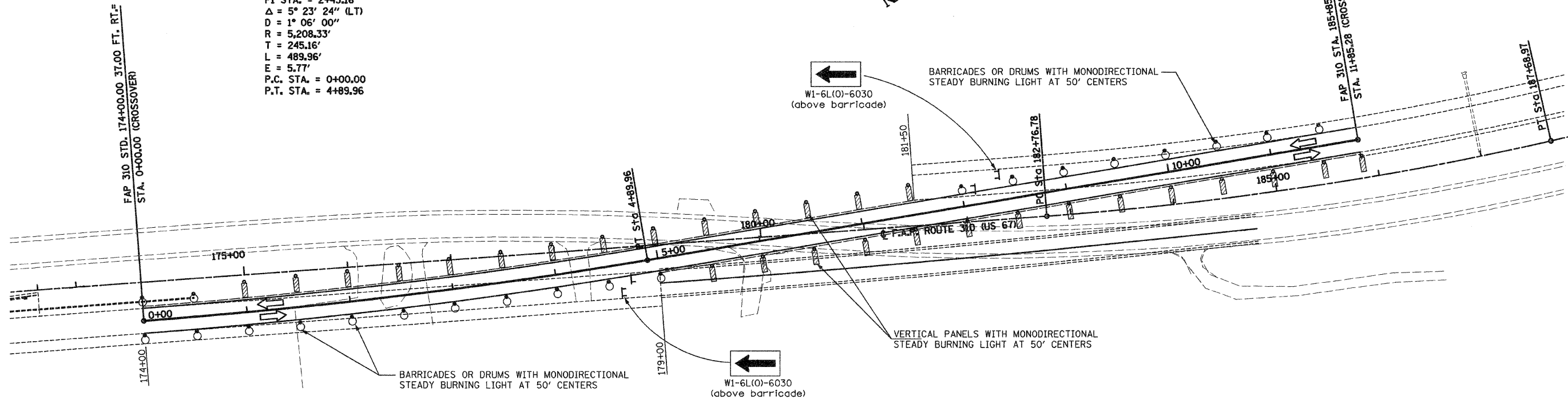


F.A. RTE.	SECTION	COUNTY	TOTAL SHEETS	SHEET NO.
310	60-16	MADISON	662	91
STA. 207+40		TO STA. 240+00		
FED. ROAD DIST. NO. 8		ILLINOIS FED. AID PROJECT		
CONTRACT NO. 76311				

CROSSOVER CURVE DATA
 PI STA. = 2+45.16
 $\Delta = 5^\circ 23' 24''$ (LT)
 $D = 1^\circ 06' 00''$
 $R = 5,208.33'$
 $T = 245.16'$
 $L = 489.96'$
 $E = 5.77'$
 P.C. STA. = 0+00.00
 P.T. STA. = 4+89.96

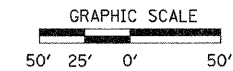
ADDITIONAL SIGNING AND TRAFFIC CONTROL SHALL BE IN ACCORDANCE WITH TRAFFIC CONTROL AND PROTECTION, SPECIAL I (SEE SHEET 94 FOR DETAILS)



TYPICAL TANGENT SECTIONS FOR CROSSOVER

SYMBOLS

- Sign
- Barricade or drum with monodirectional steady burning light
- Vertical panel with Monodirectional Steady Burning Lights
- Type III barricade with Flashers
- Flashing Light
- Arrow Board
- Directional Indicator Barricades



REVISIONS	
NAME	DATE

ILLINOIS DEPARTMENT OF TRANSPORTATION

**CROSS OVER
DETAIL NO. 3**

SCALE: VERT.
HORIZ.
DATE: 09-04-09

DRAWN BY: T.W.C.
CHECKED BY: J.J.C.