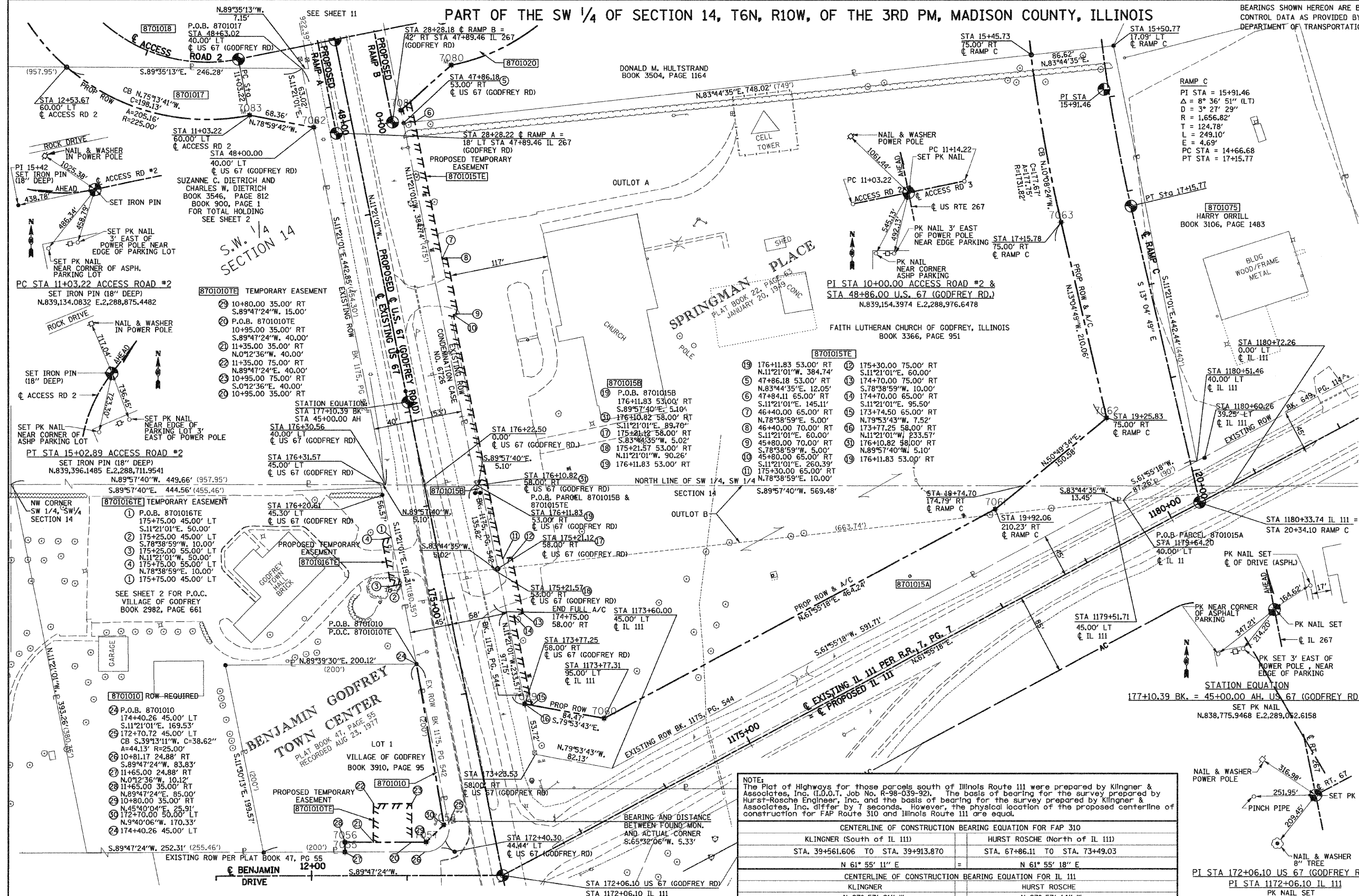


PART OF THE SW 1/4 OF SECTION 14, T6N, R10W, OF THE 3RD PM, MADISON COUNTY, ILLINOIS

FAP ROUTE	SECTION	COUNTY	TOTAL SHEETS	SHEET NO.
310	60-15, 60-16	MADISON	662	129
STA 172+00	TO STA 49+00			
FED. ROAD DIST. NO.	ILLINOIS	FED. AID PROJECT		
CONTRACT NO. 76311				



STATE OF ILLINOIS)
 COUNTY OF) SS
)

THIS IS TO CERTIFY THAT I, JEFFREY B. MEYER AN ILLINOIS PROFESSIONAL LAND SURVEYOR, HAS SURVEYED THE PLAT OF HIGHWAYS SHOWN HEREON IN SECTION 14, TOWNSHIP 6 NORTH, RANGE 10 WEST, OF THE THIRD PRINCIPAL MERIDIAN, MADISON COUNTY, THAT THE SURVEY IS TRUE AND COMPLETE AS SHOWN TO THE BEST OF MY KNOWLEDGE AND BELIEF, THAT THE PLAT CORRECTLY REPRESENTS SAID SURVEY, THAT ALL MONUMENTS FOUND AND ESTABLISHED ARE OF PERMANENT QUALITY AND OCCUPY THE POSITIONS SHOWN THEREON AND THAT THE MONUMENTS ARE SUFFICIENT TO ENABLE THE SURVEY TO BE RETRACED. MADE FOR THE DEPARTMENT OF TRANSPORTATION, STATE OF ILLINOIS.

DATED _____

JEFFREY B. MEYER, PLS No. 035-002977
 LICENSE EXPIRES NOVEMBER 30, 2010

PARCEL 8701015A 1.7575 AC, 76.556 SF
 PARCEL 8701015B 0.0103 AC, 450 SF

PARCEL NO.	OWNER/TITLE REPORT NO.	TOTAL HOLDING	R.O.W. REQUIRED	PREVIOUSLY DEDICATED	REMAINDER	EASEMENTS TEMP	EASEMENTS PERM	EASEMENT PURPOSE	PERMANENT TAX NUMBER	PROPERTY ACQUIRED BY
8701010	THE VILLAGE OF GODFREY, MA-2118.0 AN ILLINOIS MUNICIPAL CORPORATION	0.8946 AC 38,968 SF	0.0380 AC 1,657 SF	N/A	0.8566 AC 37,311 SF	0.0367 AC 1,600 SF	N/A	ENTRANCE CONST.	24-2-01-14-03-302-005	
8701015	FAITH LUTHERAN CHURCH OF GODFREY, ILLINOIS MA-1359	9.8968 AC 431,103 SF	1.7678 AC 77,006 SF	0.0103 AC 450 SF	8.1290 AC 354,097 SF	0.1645 AC 7,166 SF	N/A	ENTRANCE CONST.	24-1-01-14-00-000-008	
8701016	THE VILLAGE OF GODFREY, MA-2117.0 AN ILLINOIS MUNICIPAL CORPORATION	3.0931 AC 134,736 SF	N/A	N/A	3.0931 AC 134,736 SF	0.0115 AC 500 SF	N/A	ENTRANCE CONST.	24-1-01-14-03-302-004	
8701017	SUZANNE C. DIETRICH AND CHARLES W. DIETRICH MA-1351.0	9.5201 AC 414,695 SF	0.2551 AC 11,110 SF	N/A	9.2650 AC 403,585 SF	N/A	N/A	N/A	24-1-01-14-03-302-003	

STATION	OFFSET	COORDINATE TABLE		STATION	OFFSET	COORDINATE TABLE	
		NORTH	EAST			NORTH	EAST
174+40.26	45.00' LT	838,502.242	2,289,061.6601	176+30.56	40.00' LT	838,689.8097	2,289,029.1085
172+70.00	50.00' LT	838,334.3317	2,289,090.2655	176+31.57	45.00' LT	838,689.8131	2,289,024.0081
10+81.17	24.88' RT	838,306.1044	2,289,070.6061	47+86.18	53.00' RT	839,066.9627	2,289,048.2562
11+65.00	24.88' RT	838,305.7970	2,288,986.7729	176+11.83	53.00' RT	838,689.7452	2,289,123.9766
11+65.00	35.00' RT	838,315.9168	2,288,986.7358	176+10.82	58.00' RT	838,689.7417	2,289,129.0770
10+80.00	35.00' RT	838,316.2284	2,289,071.7352	175+21.12	58.00' RT	838,601.7998	2,289,146.7300
48+63.02	40.00' LT	839,123.9972	2,288,941.9523	175+21.57	53.00' RT	838,601.2527	2,289,141.7401
48+00.00	40.00' LT	839,062.2070	2,288,954.3557	173+77.25	58.00' RT	838,460.7438	2,289,175.0447
11+03.22	60.00' LT	839,075.2562	2,288,887.2545	173+77.25	95.00' LT	838,445.9237	2,289,258.2048
12+53.67	60.00' LT	839,125.1729	2,288,695.6769	19+25.83	75.00' RT	838,730.3250	2,289,791.3256
174+75.00	58.00' RT	838,556.5709	2,289,155.7717	19+92.06	210.23' RT	838,759.5466	2,289,784.5362

HR HURST-ROSCHKE ENGINEERS, INC.
 100 N. TREMONT STREET
 P.O. BOX 130
 HILLSDALE, ILLINOIS 62420
 PH. 317.632.0966 FAX 317.632.0212
 PROFESSIONAL DESIGN FIRM NO. 184-000298

ILLINOIS DEPARTMENT OF TRANSPORTATION
PLAT OF HIGHWAYS
 FAP ROUTE 310 (US 67 & IL 255)
 SECTION 60-16, 60-15
 MADISON COUNTY
 JOB NO. R-98-001-97/R-98-039-92

STATION 172+00 TO STATION 49+00

SCALE: 1" = 50'

SHEET 8 OF 29

ILLINOIS DEPARTMENT OF TRANSPORTATION
 DIVISION OF HIGHWAYS/DISTRICT 8
 1102 EASTPORT PLAZA DRIVE
 COLLINGSVILLE, ILLINOIS 62234-6198